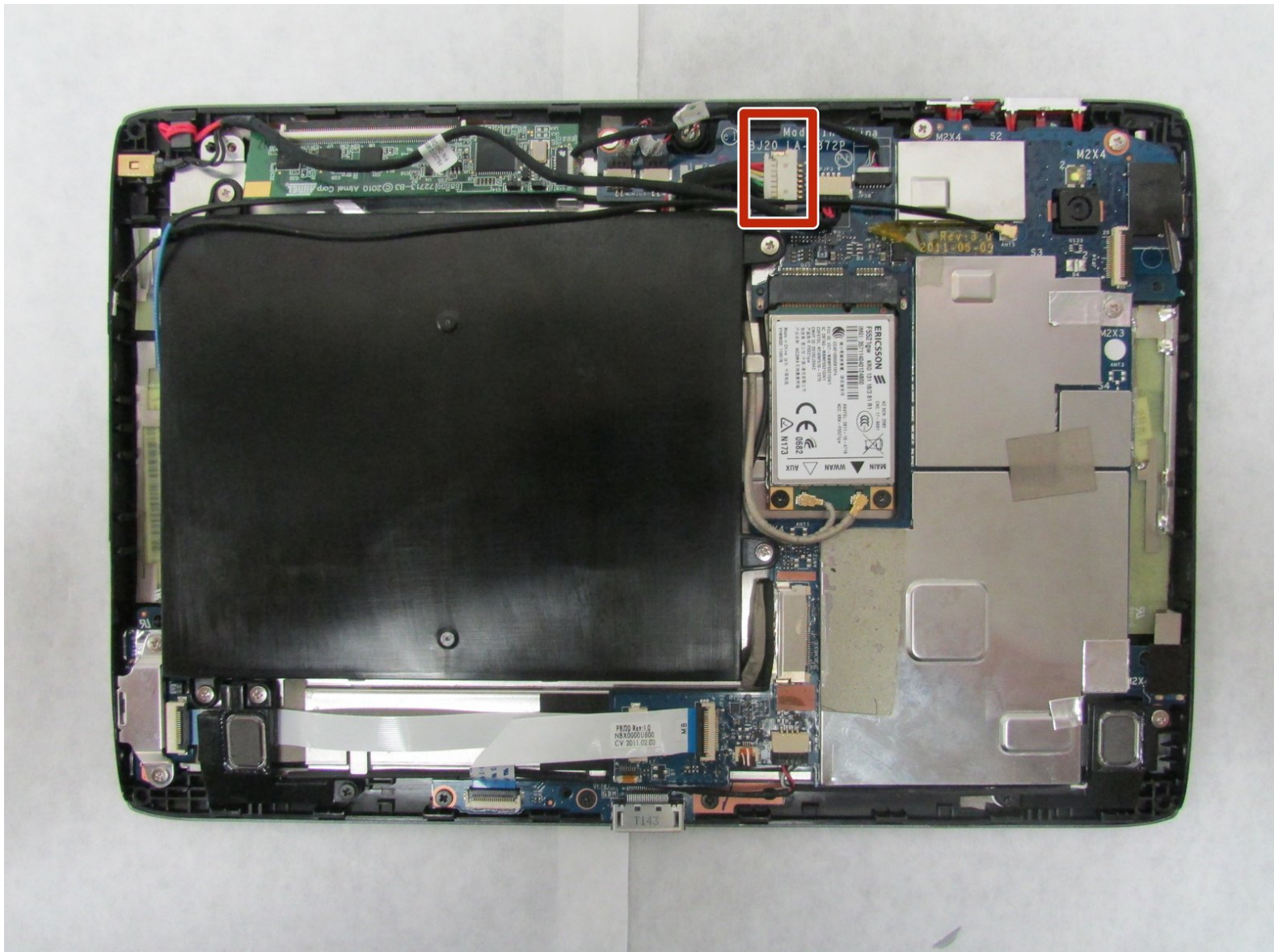




Acer Iconia Tab A501 Docking Port Replacement

This guide will take you through the steps to successfully replace the docking port on the tablet.

Written By: Daksh Malhotra



INTRODUCTION

The Docking port is used to connect accessories like keyboards with the device. Follow the steps in the guide to replace the existing docking port on the device.

TOOLS:

- [iFixit Opening Tools](#) (1)
 - [Phillips #1 Screwdriver](#) (1)
-

Step 1 — Back Cover



 Turn off your device before opening it.

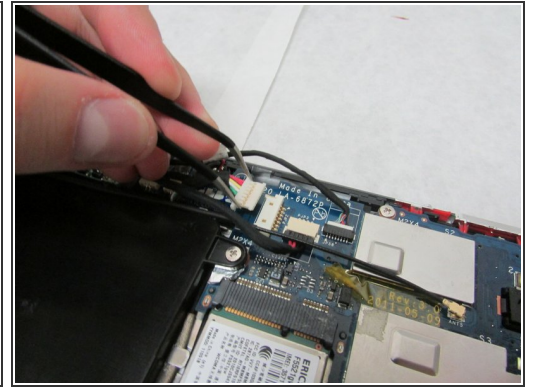
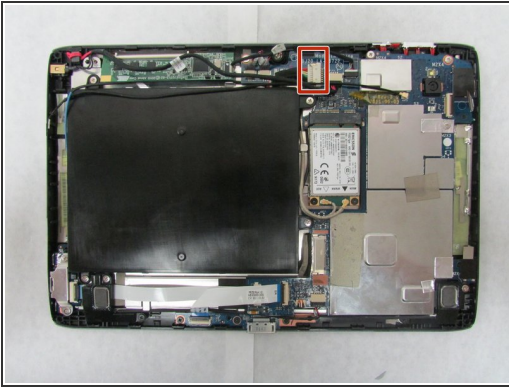
- Use a plastic opening tool to carefully separate the back cover, starting at the volume buttons.
- Continue separating the back cover along the short side closest to the camera and around the device.


Step 2



- When separated enough, a little more than halfway around the device, the back cover will be easy to take off.

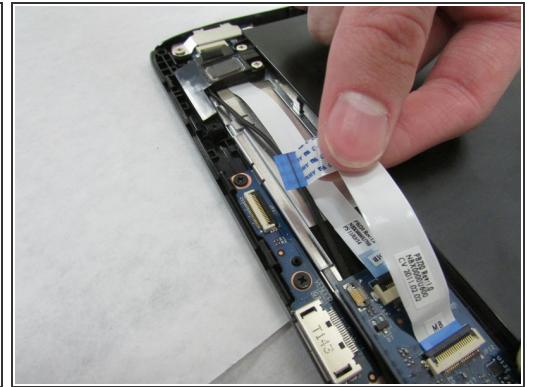
Step 3 — Docking Port



 In the next step, be careful not to squeeze too hard or scratch the motherboard.

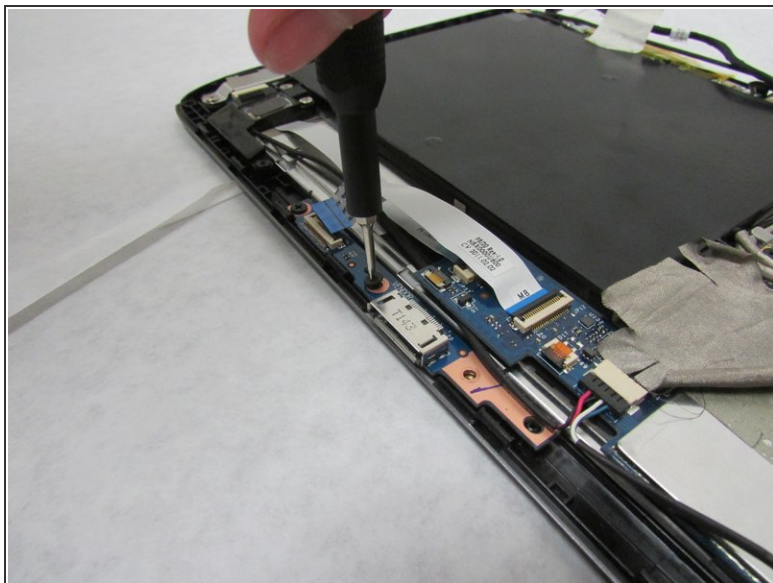
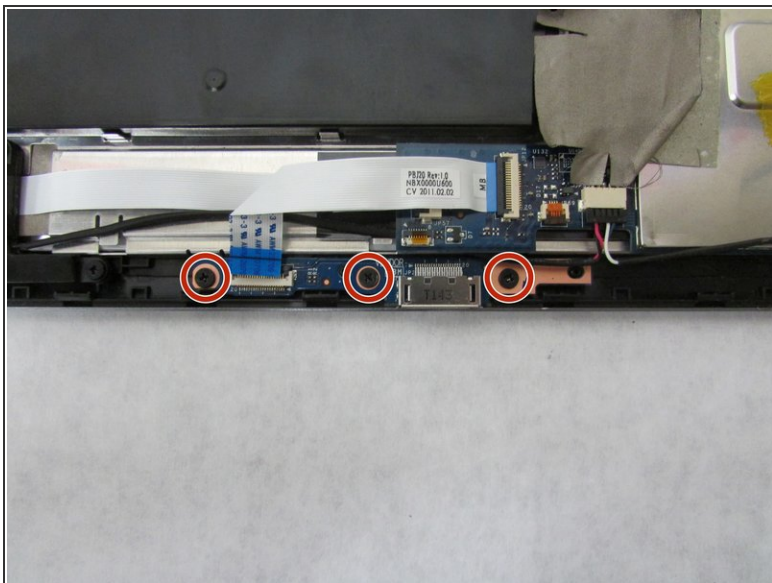
- Use the angled tweezers to disconnect the white motherboard-battery connector in the middle of the side opposite the docking port.

Step 4



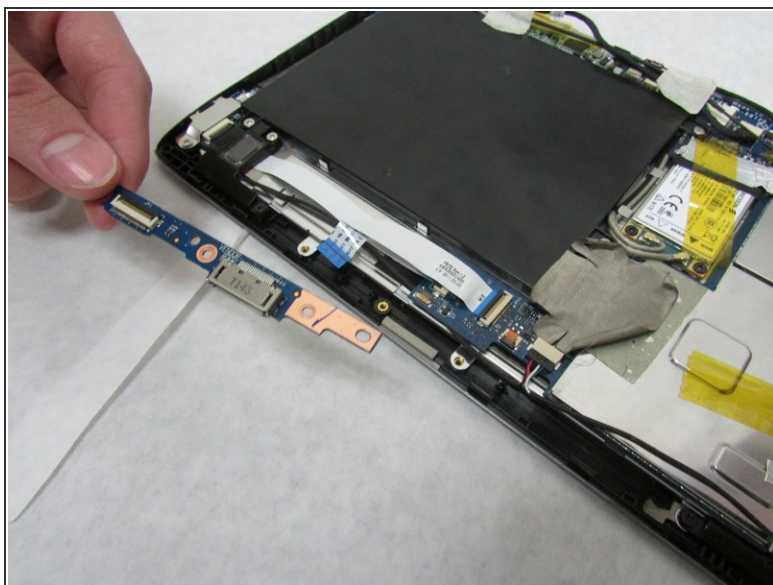
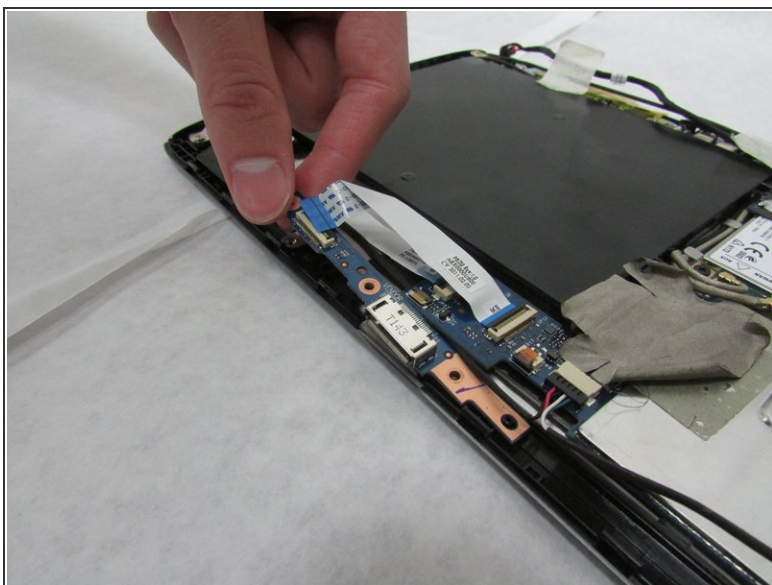
- Use the plastic opening tool to flip up the locking mechanism for the ribbon cable on the docking port board that is flat, white, and folded.
- Detach the folded, white ribbon cable on the docking port board.

Step 5



- Use a Phillips #1 screwdriver to unscrew the three 3.0 mm Philips head screws holding the docking port in place.

Step 6



- Remove the docking port.

To reassemble your device, follow these instructions in reverse order.