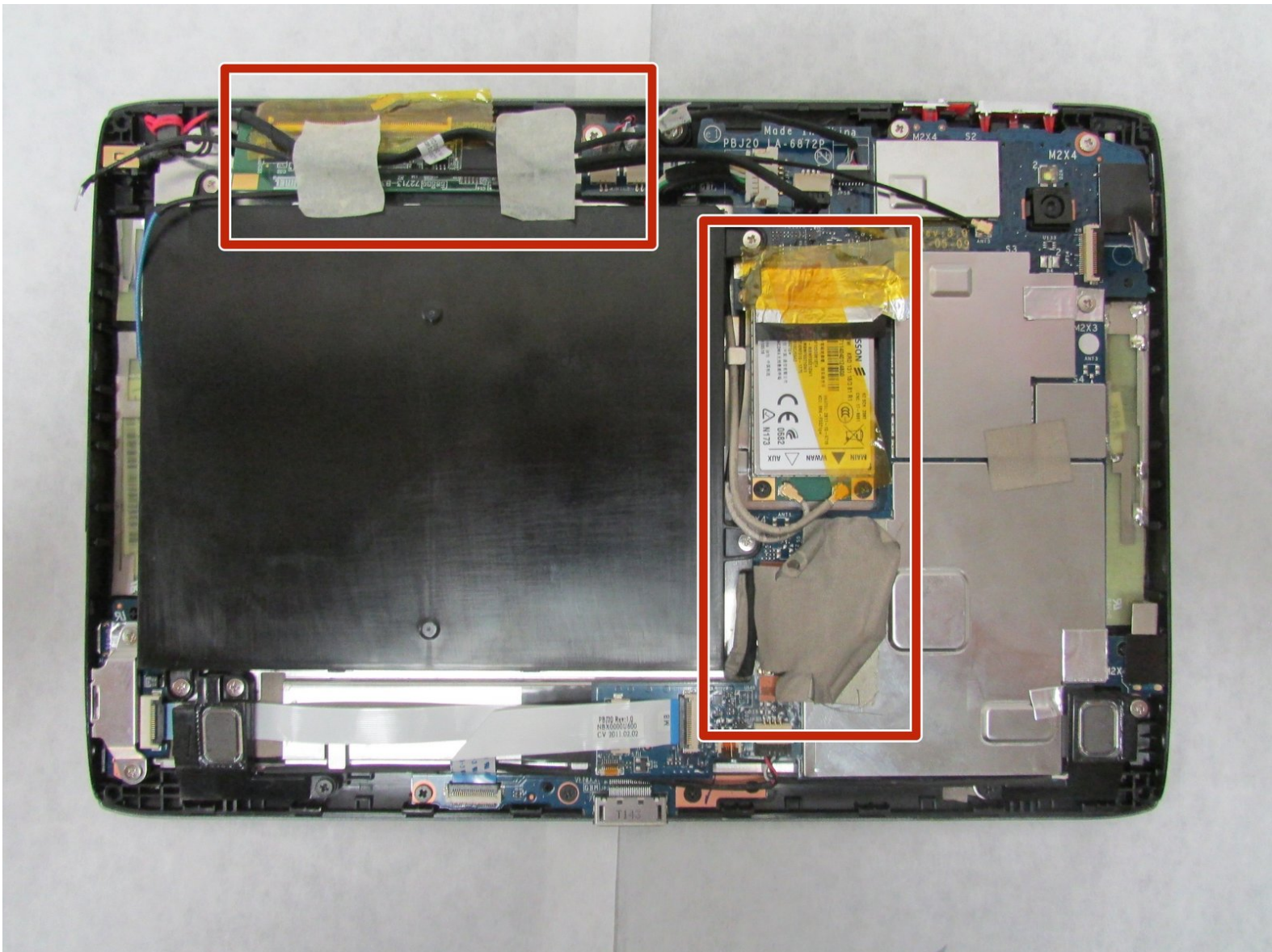




Acer Iconia Tab A501 Motherboard Replacement

Motherboard replacement guide for the Acer Iconia Tab A501.

Written By: Daksh Malhotra



INTRODUCTION

The motherboard directly connects almost all of a device's parts. If your motherboard is having problems or has failed, you may decide to replace it. This guide will demonstrate replacing a motherboard for the Acer Iconia Tab A501.



TOOLS:

- [iFixit Opening Tools](#) (1)
- [Tweezers](#) (1)

Angled

- [Spudger](#) (1)
 - [ESD Safe Tweezers Blunt Nose](#) (1)
 - [Phillips #1 Screwdriver](#) (1)
-

Step 1 — Back Cover



 Turn off your device before opening it.

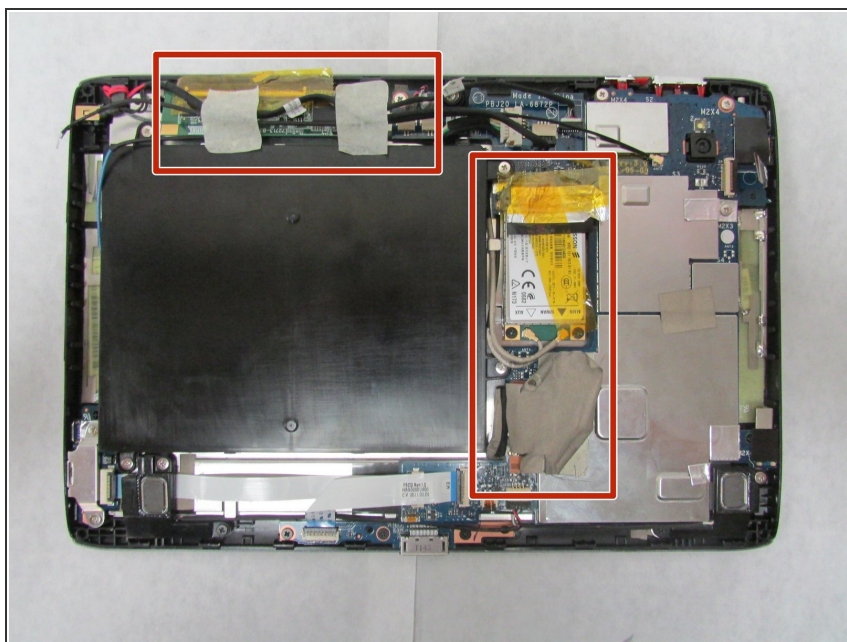
- Use a plastic opening tool to carefully separate the back cover, starting at the volume buttons.
- Continue separating the back cover along the short side closest to the camera and around the device.

Step 2



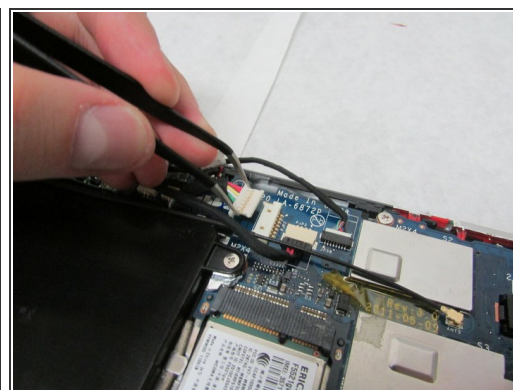
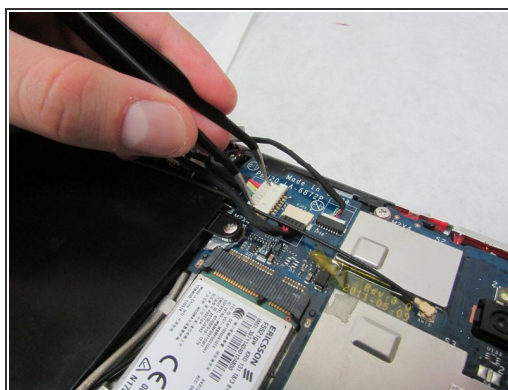
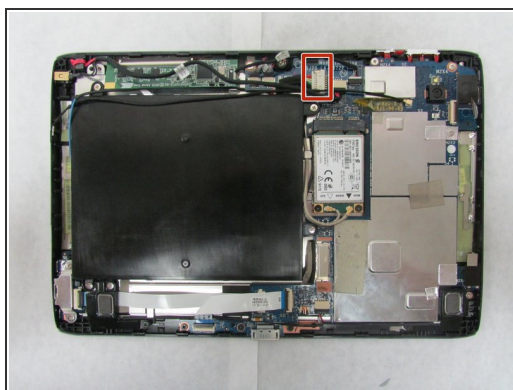
- When separated enough, a little more than halfway around the device, the back cover will be easy to take off.

Step 3 — Motherboard



- Remove all tape from the device.

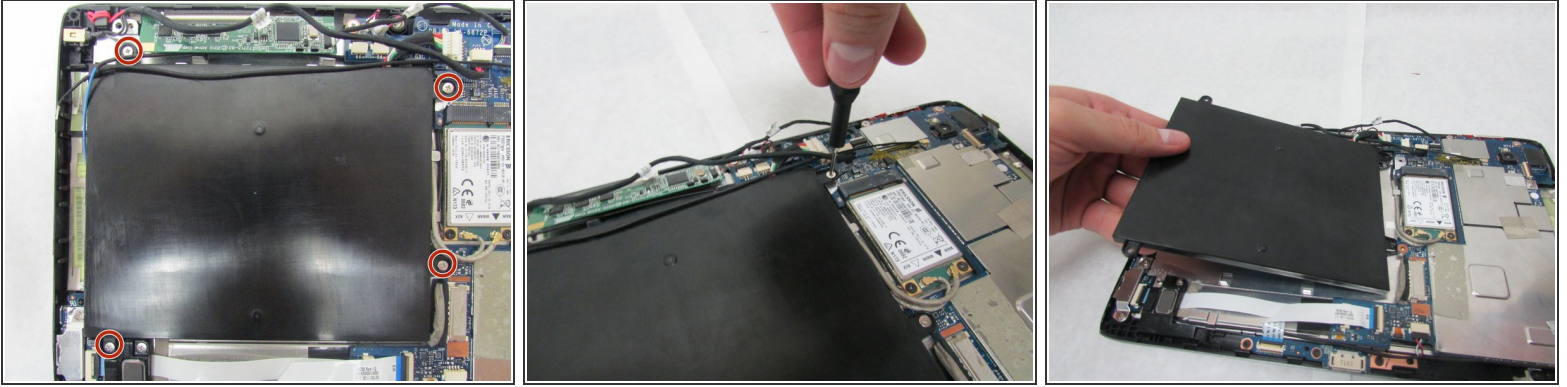
Step 4



⚠ In the next step, be careful not to squeeze too hard or scratch the motherboard.

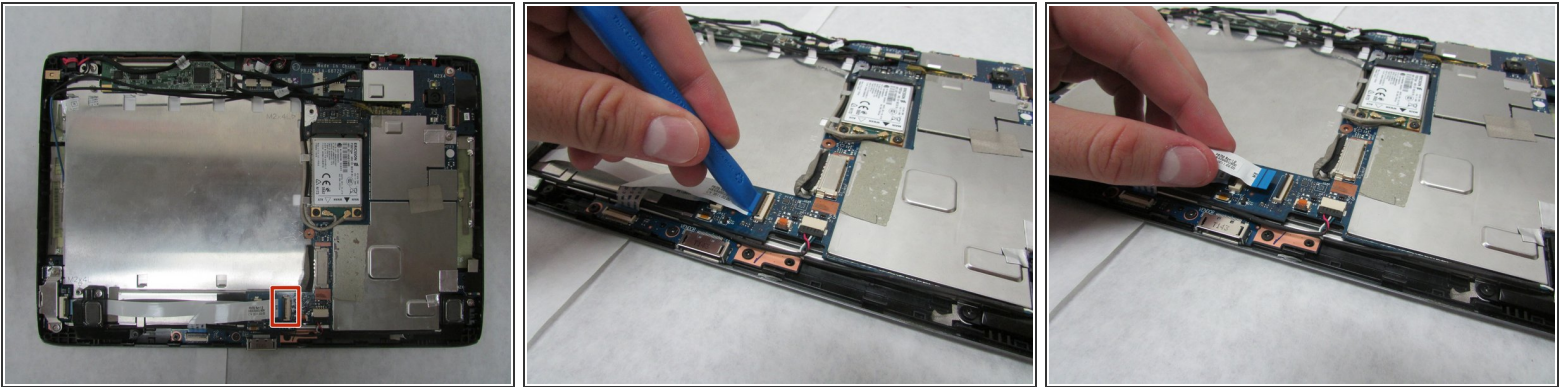
- Use the angled tweezers to disconnect the motherboard-battery cable from the white connector in the middle of the side opposite the docking port.

Step 5



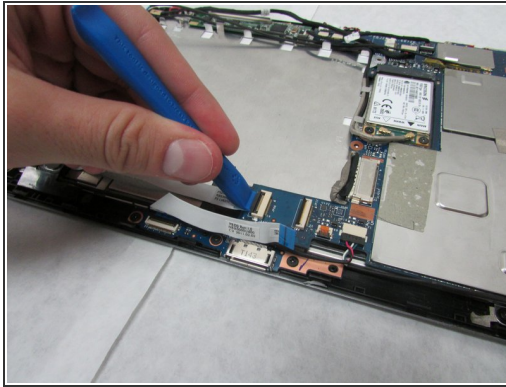
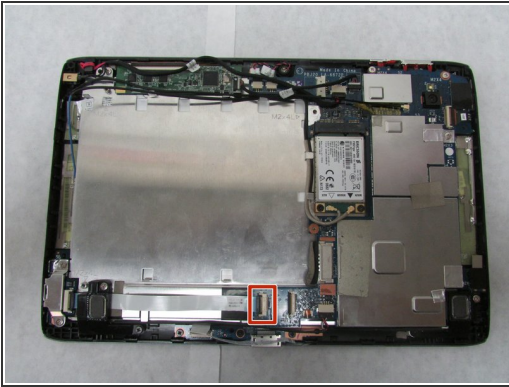
- Use a Phillips #1 screwdriver to remove the four 4.0 mm Philips head screws connecting the battery to the motherboard.
- Take out the battery.

Step 6



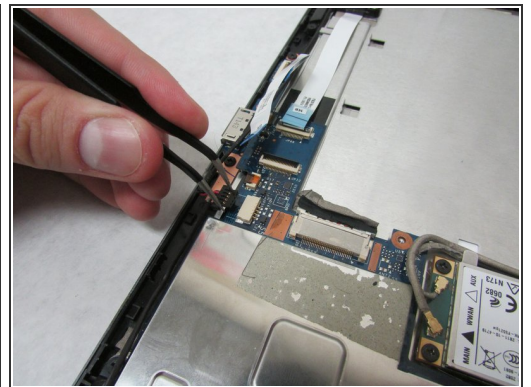
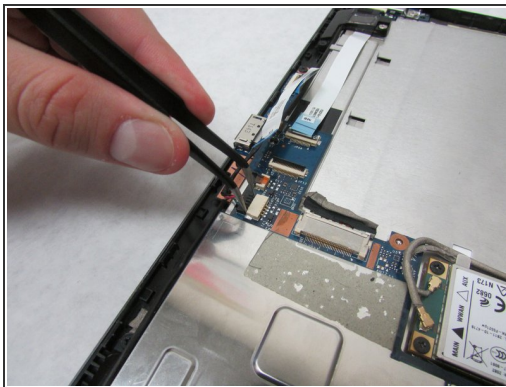
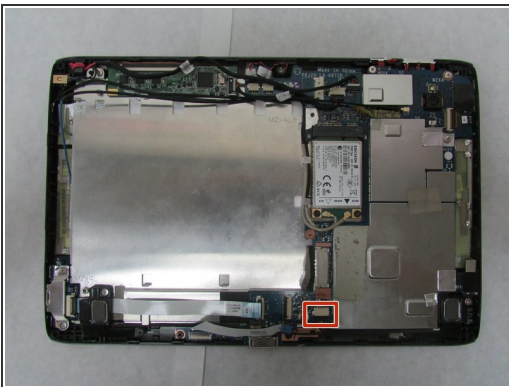
- Use the plastic opening tool to flip up the locking mechanism on the motherboard connected to the folded, white ribbon cable.
- Remove the folded, white cable.

Step 7



- Use the plastic opening tool to flip up the locking mechanism on the motherboard connected to the straight, white ribbon cable.
- Remove the straight, white ribbon cable.

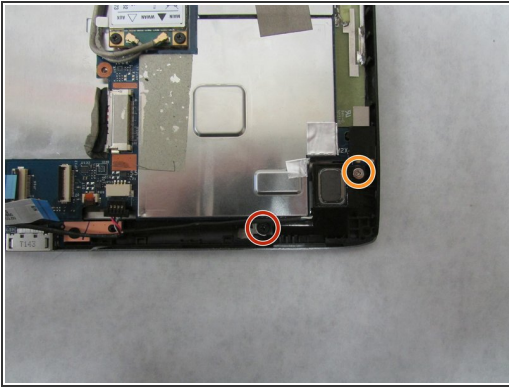
Step 8



⚠ In this step, be careful not to squeeze too hard or scratch the motherboard.

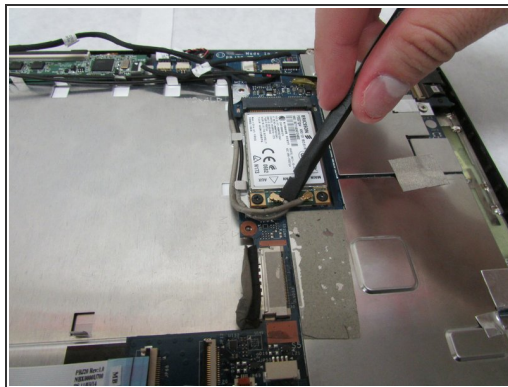
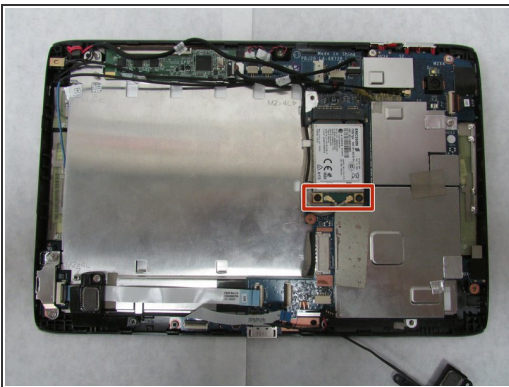
- Use the angled tweezers to disconnect the cable with red, white and green wires from the beige connector slightly in from the docking port.

Step 9



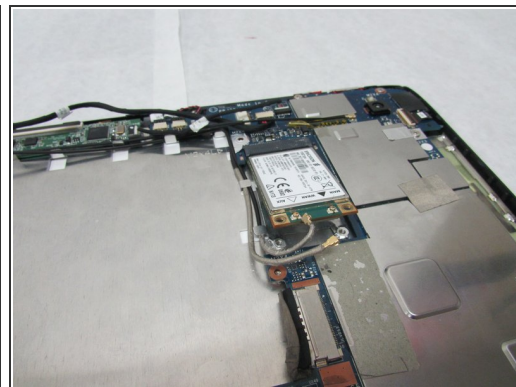
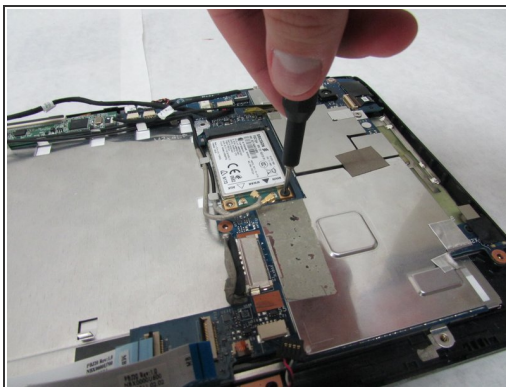
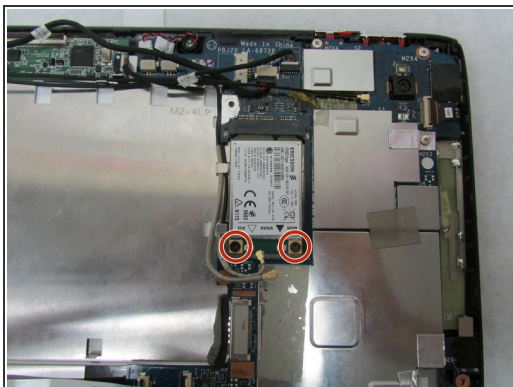
- Unscrew the 3.0 mm Phillips head screw on the speaker near the Micro-HDMI port using a Phillips #1 screwdriver.
- Unscrew the 4.0 mm Phillips head screw on the speaker near the Micro-HDMI port using a Phillips #1 screwdriver.
- Remove the speaker.

Step 10



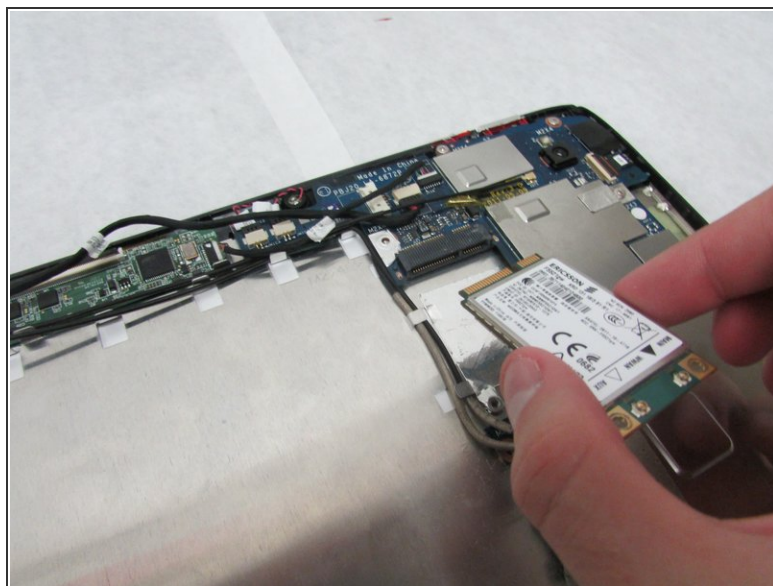
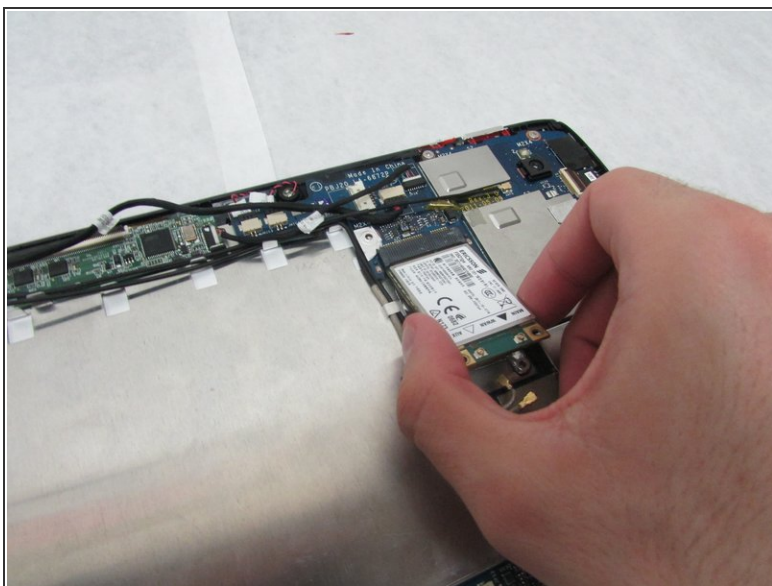
- Use the flat end of the standard Spudger to disconnect the two small, rotatable connectors attached to the wireless adapter.

Step 11



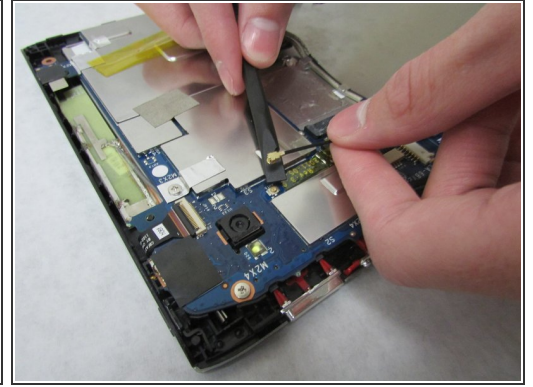
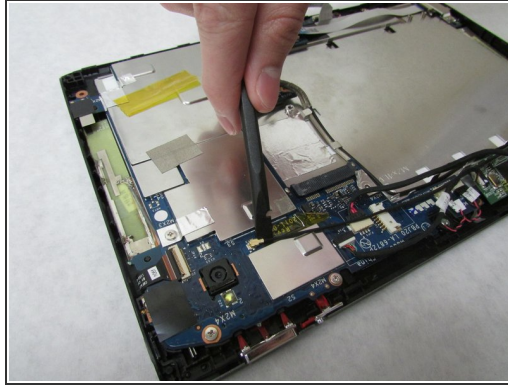
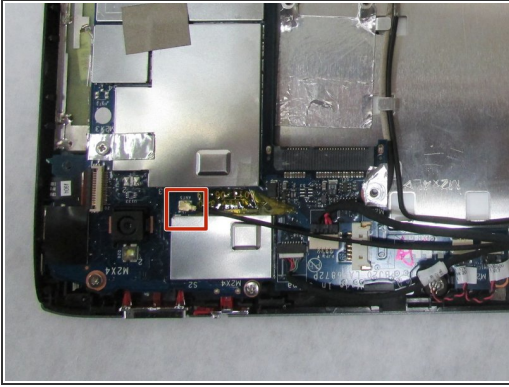
- Use a Phillips #1 screwdriver to remove the two 3.0 mm Philips head screws holding the adapter down.

Step 12



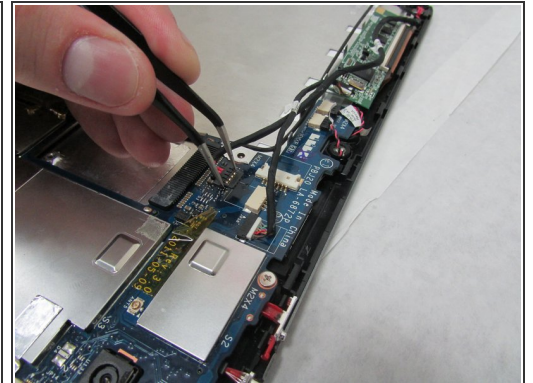
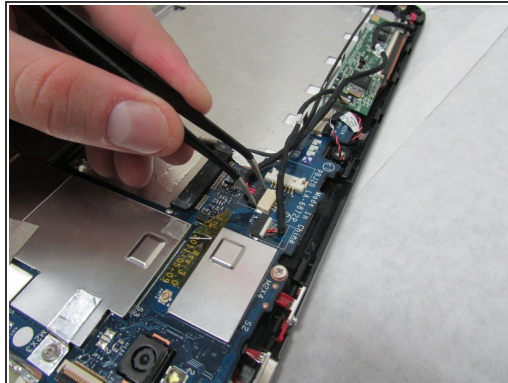
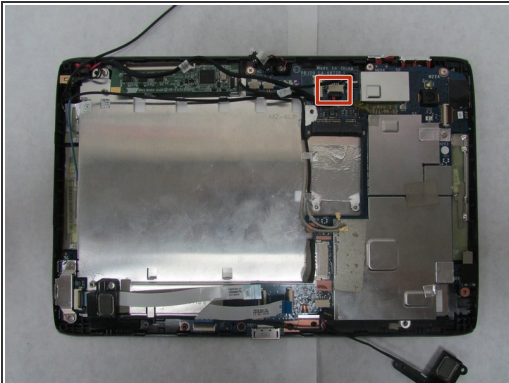
- Carefully slide the adapter out to remove it.

Step 13



- Use the wide end of the standard Spudger to take off the rotatable connector to the 3g antenna below the rear-facing camera.

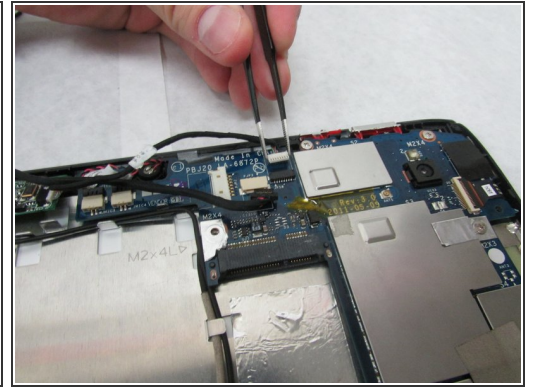
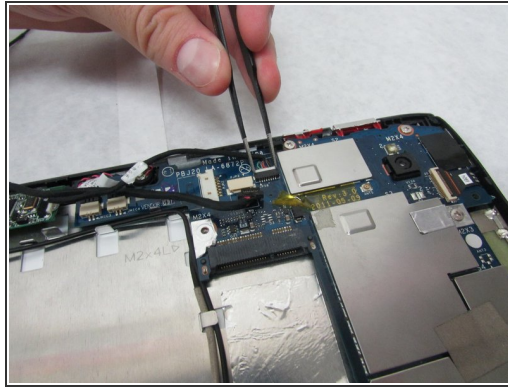
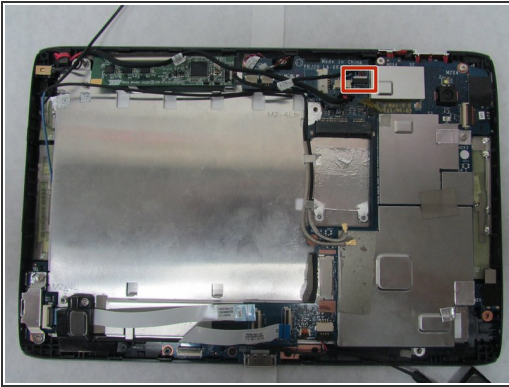
Step 14



⚠ In the next step, be careful not to squeeze too hard or scratch the motherboard.

- Use the angled tweezers to disconnect the cable with red wires from the beige connector opposite the docking port.

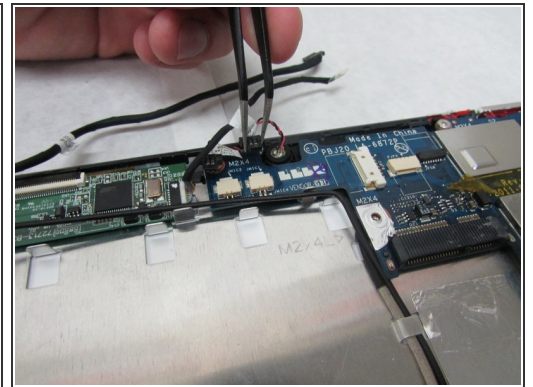
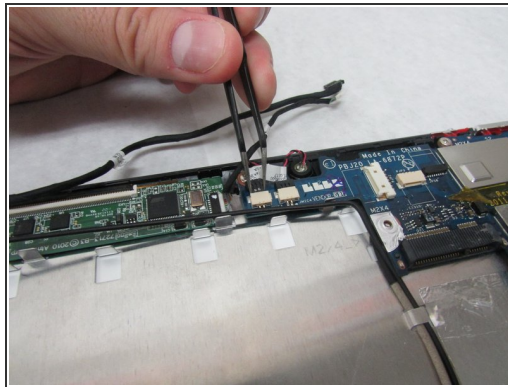
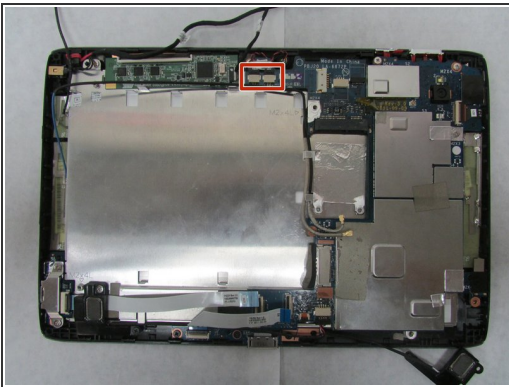
Step 15



⚠ In this step, be careful not to squeeze too hard or scratch the motherboard.

- Use the tweezers to remove touchscreen connector from the motherboard.

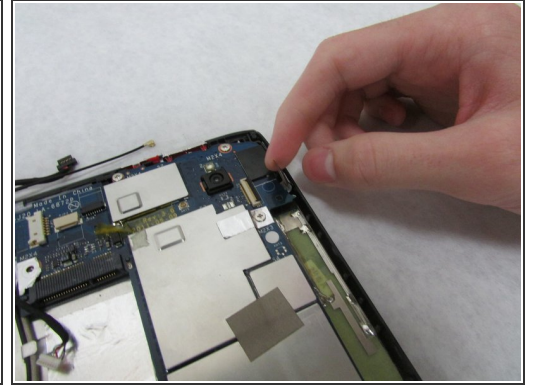
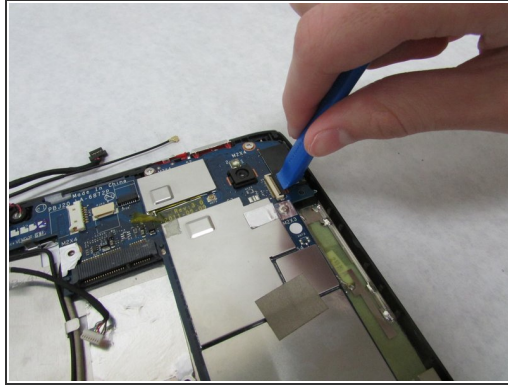
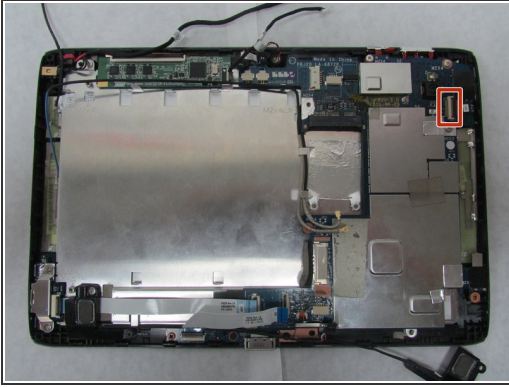
Step 16



⚠ In this step, be careful not to squeeze too hard or scratch the motherboard.

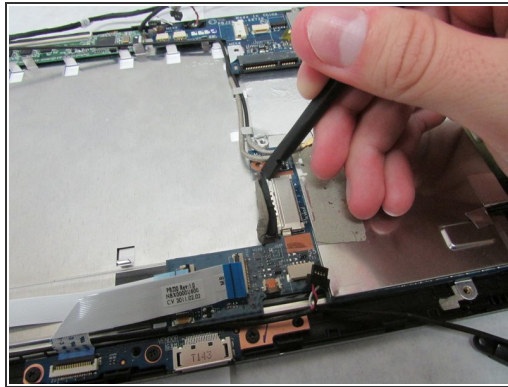
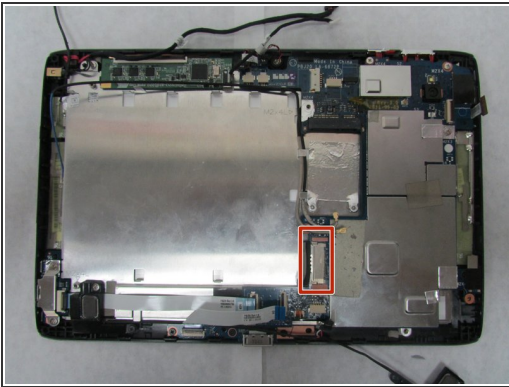
- Use the angled tweezers to disconnect two microphone connectors, which are above the orange-brown touchscreen connector and next to the battery space.

Step 17



- Use the plastic opening tool to flip up the locking mechanism to the white front camera port just above the rear-facing camera.
- Disconnect the camera cable from the motherboard.

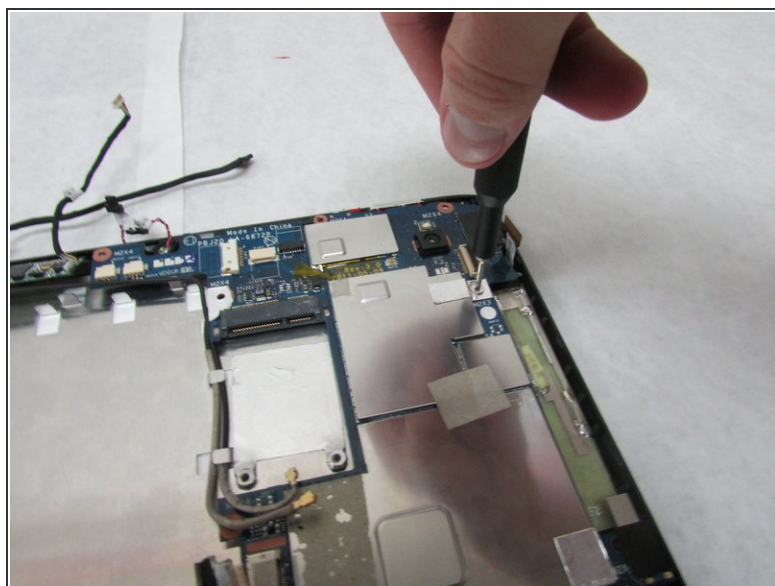
Step 18



Use care in the next step.

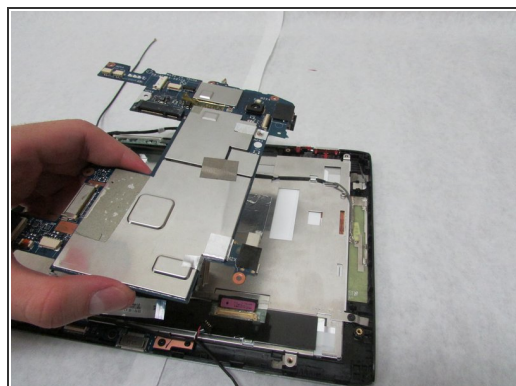
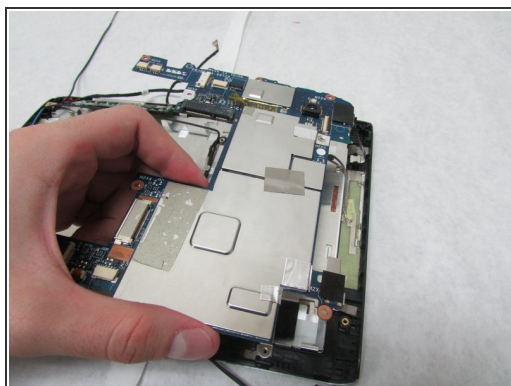
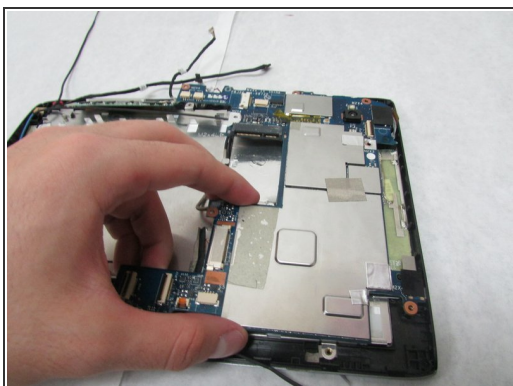
- Use the wide, flat end of the standard Spudger to disconnect the display connector from the large, metal port next to the battery space.

Step 19



- Use a Phillips #1 screwdriver to unscrew the four 4.0 mm Phillips head screws holding the motherboard in place.

Step 20



- Remove the motherboard.

To reassemble your device, follow these instructions in reverse order.