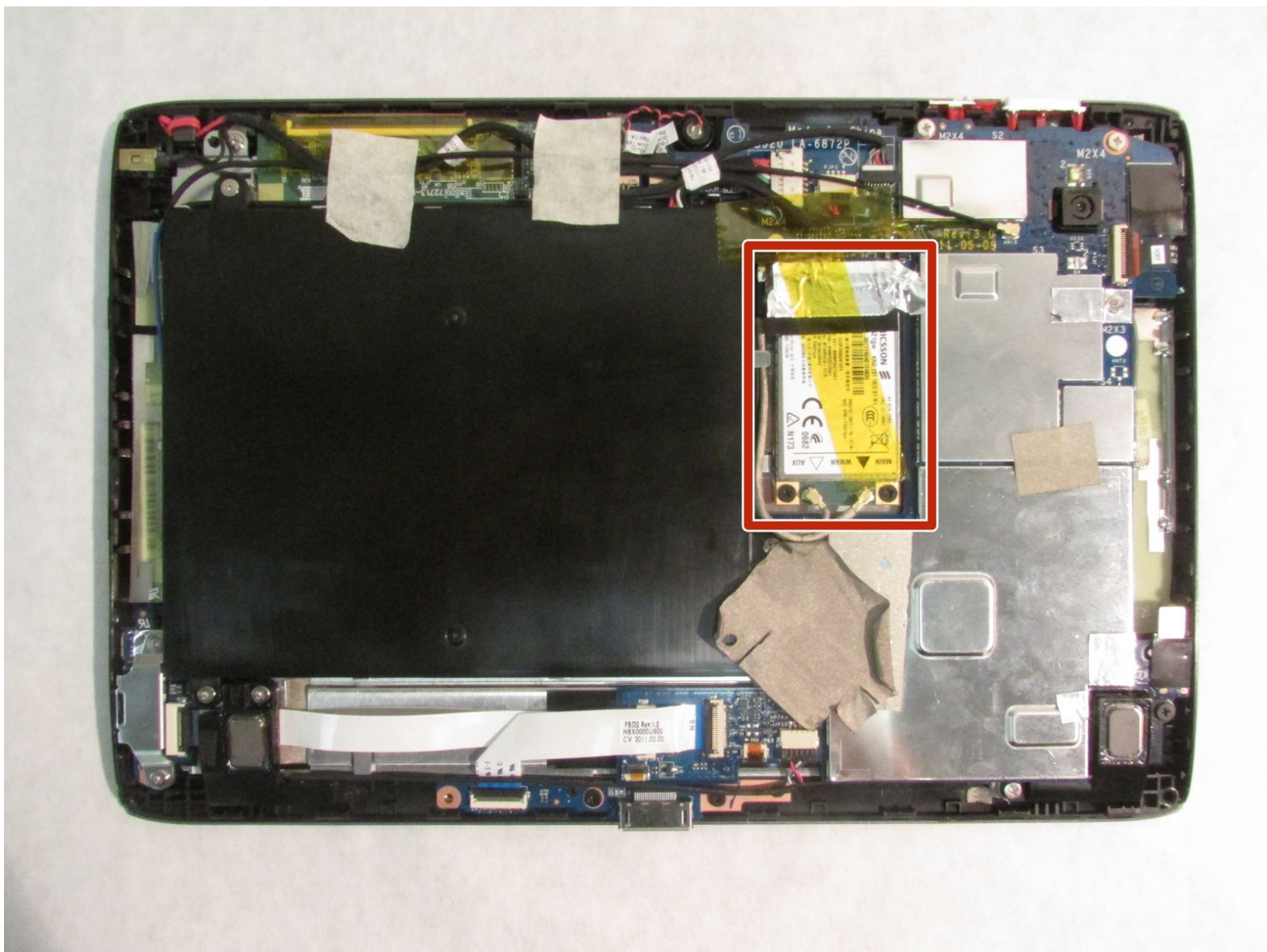




# Acer Iconia Tab A501 Wireless Adapter Replacement

Written By: Daksh Malhotra



---

## INTRODUCTION

The wireless adapter is needed to connect to the Wi-Fi network or mobile network. This guide will demonstrate the wireless adapter replacement for the Acer Iconia Tab A501.

---



### TOOLS:

- [iFixit Opening Tools](#) (1)
  - [Spudger](#) (1)
  - [Phillips #1 Screwdriver](#) (1)
-

## Step 1 — Back Cover



 Turn off your device before opening it.

- Use a plastic opening tool to carefully separate the back cover, starting at the volume buttons.
- Continue separating the back cover along the short side closest to the camera and around the device.

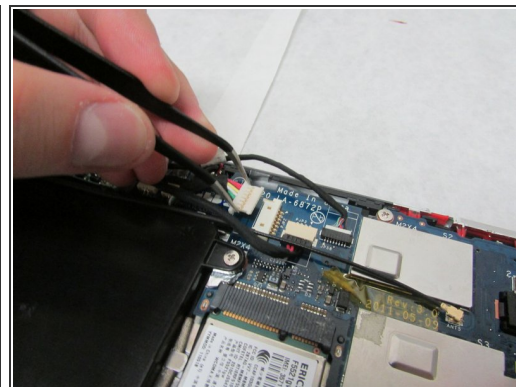
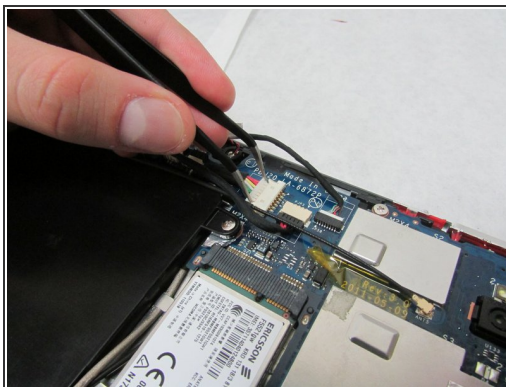
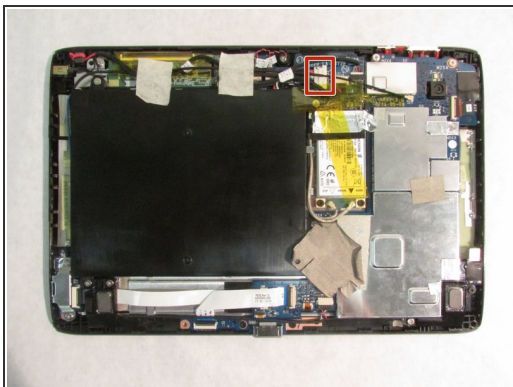
## Step 2



- When separated enough, a little more than halfway around the device, the back cover will be easy to take off.



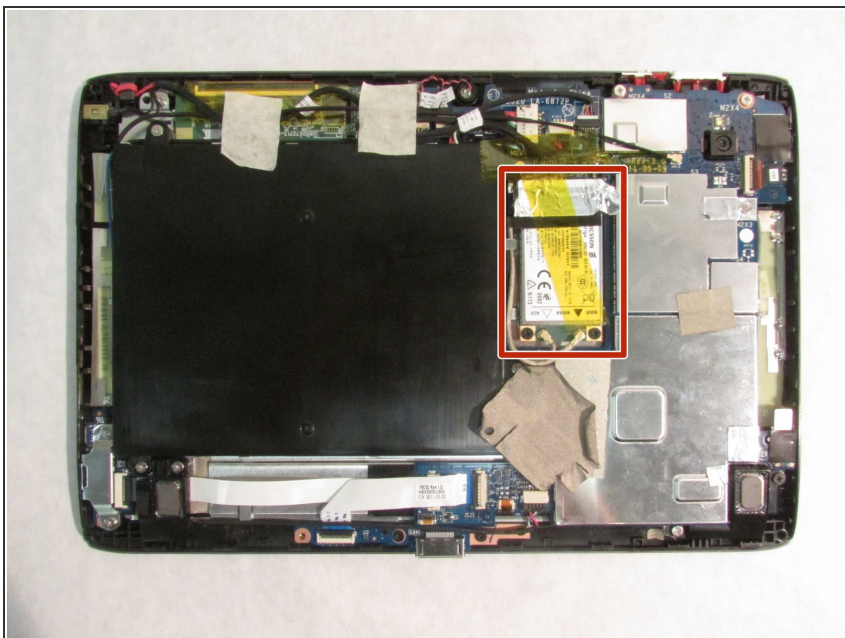
## Step 3 — Wireless Adapter



⚠ In the next step, be careful not to squeeze too hard or scratch the motherboard.

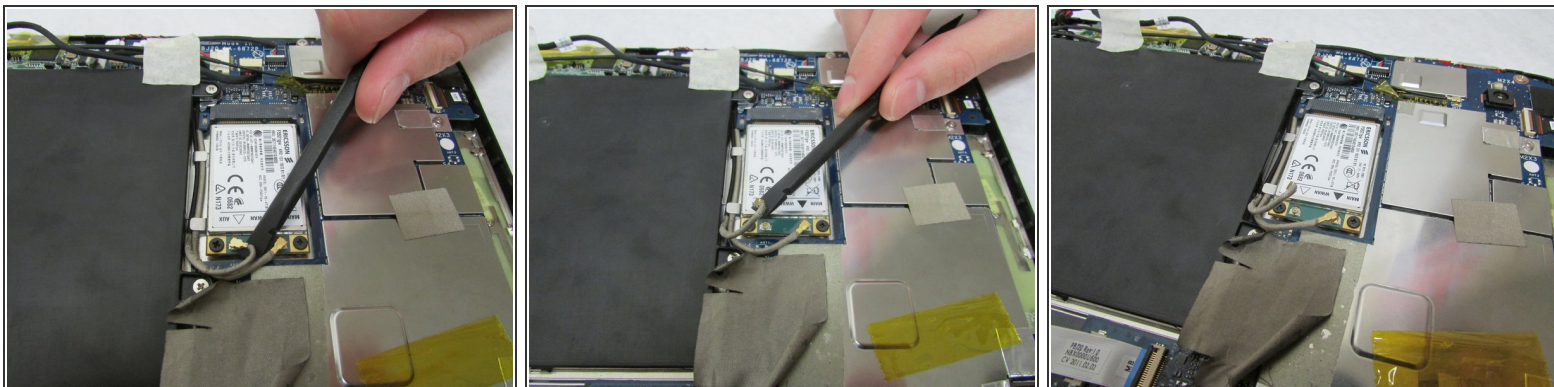
- Use the angled tweezers to disconnect the motherboard-battery cable from the white connector in the middle of the side opposite the docking port.

## Step 4



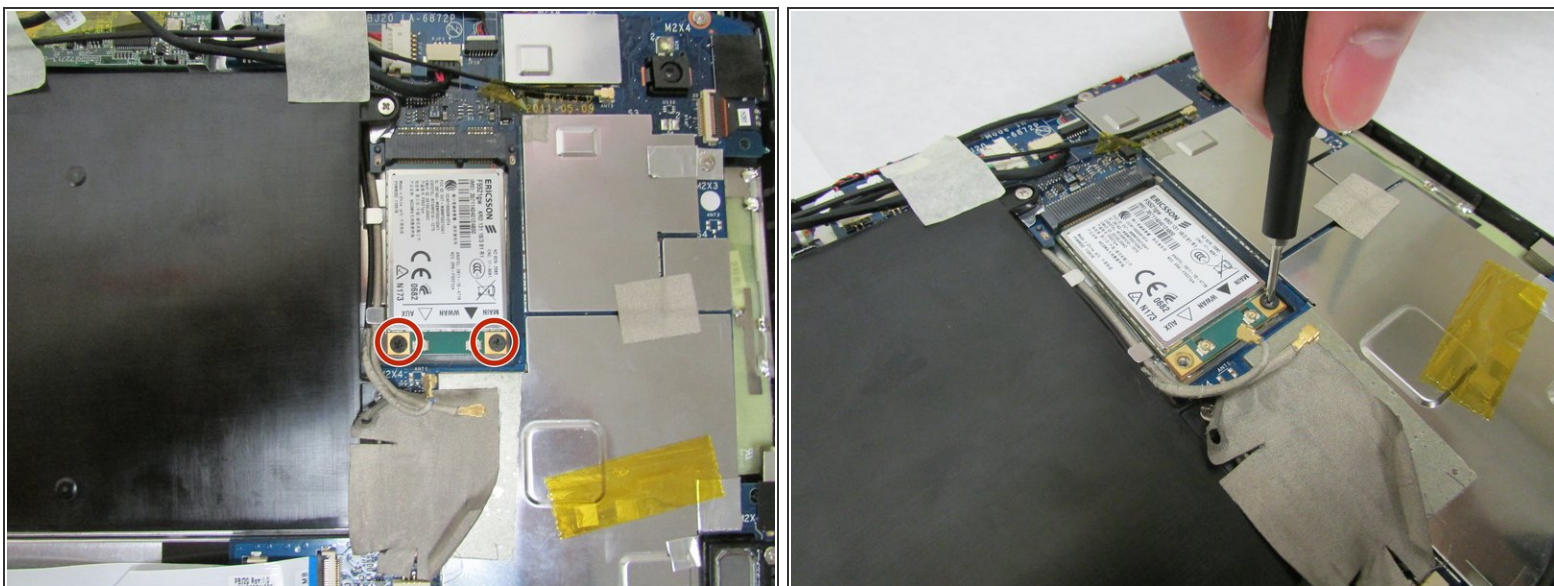
- Remove all tape covering the wireless adapter.

## Step 5



- Use the flat end of the standard Spudger to disconnect the two small rotatable connectors attached to the wireless adapter.

## Step 6



- Use a Phillips #1 screwdriver to remove the two 3.0 mm Philips head screws holding the adapter down.



## Step 7



- Carefully slide the adapter out to remove it.

To reassemble your device, follow these instructions in reverse order.