



# Acer One 10 S1002 145-A Battery Replacement

Replace damaged or dead battery.

Written By: Shannon Griffin



---

## INTRODUCTION

This guide shows how to replace a dead or damaged battery. When removing the battery you will need to use ESD(Electrostatic discharge)-safe tools like a [Heat gun](#) or an [iOpener](#).

---

### TOOLS:

- [Tweezers](#) (1)
  - [iFixit Opening Tools](#) (1)
  - [Phillips #0 Screwdriver](#) (1)
-

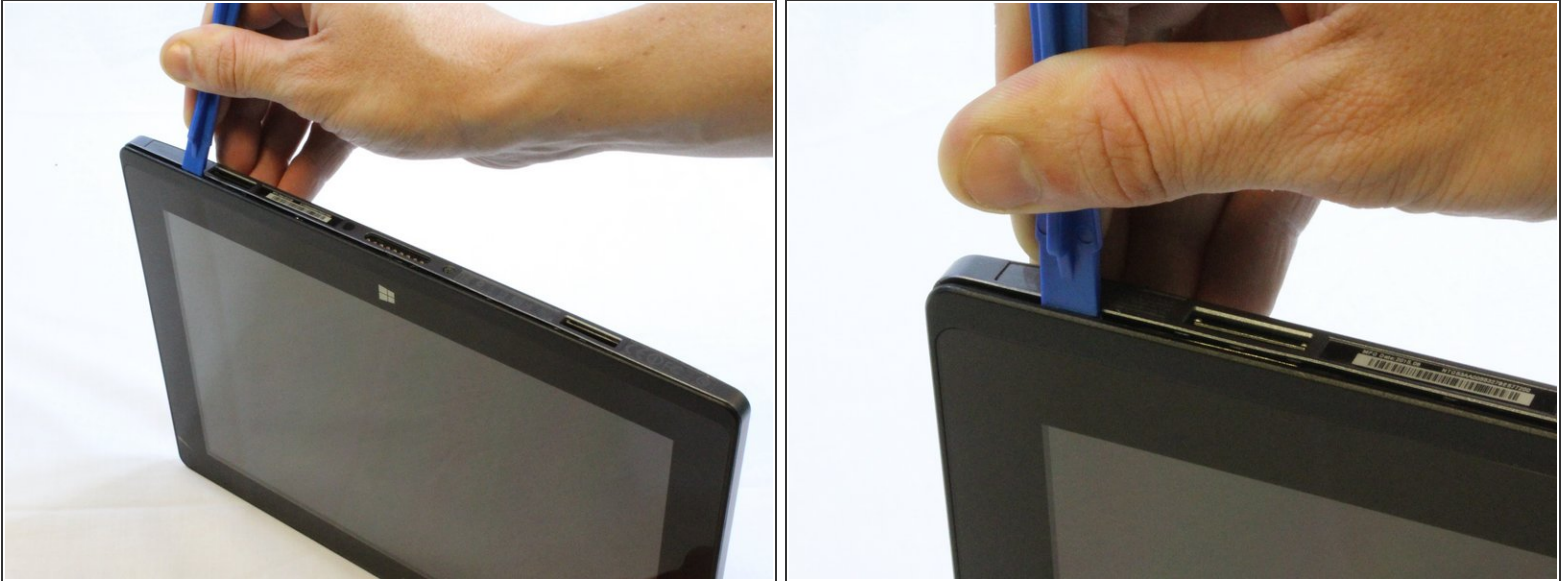
## Step 1 — Motherboard



- Make sure that the tablet is turned off and disconnected from any power source.
- Disconnect the tablet from the keyboard attachment.
- If you have a Micro SD card in the tablet, remove it now.
- Remove the two 3.5 mm Phillips #0 screws on either side the keyboard connection.

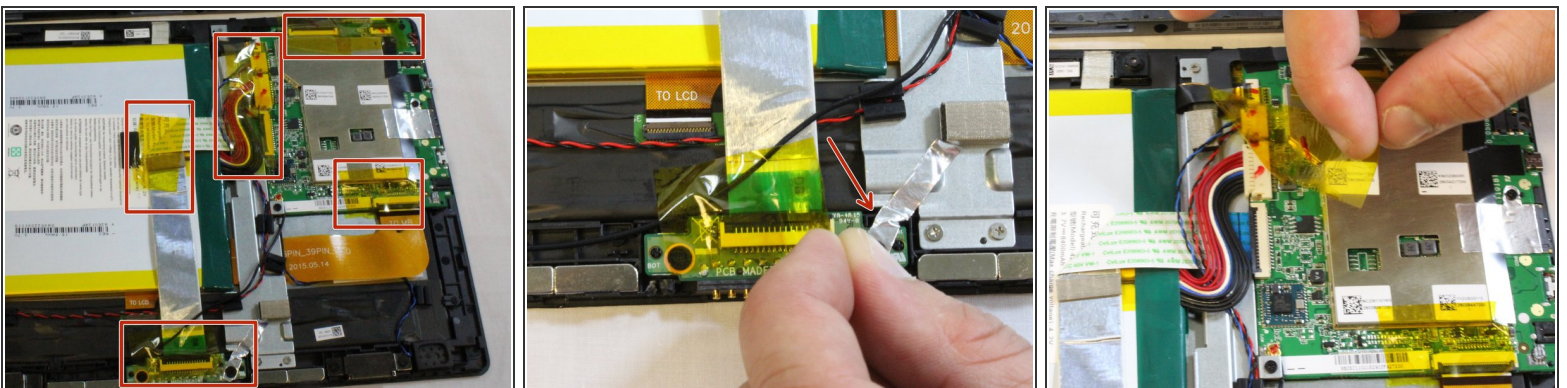


## Step 2



- Starting from a corner of the tablet, use the plastic opening tool to create a gap between the screen and the back covering.
- Slowly maneuver the plastic opening tool along the perimeter of the tablet to pry the screen and back covering apart.
- Separate the back covering from the screen.

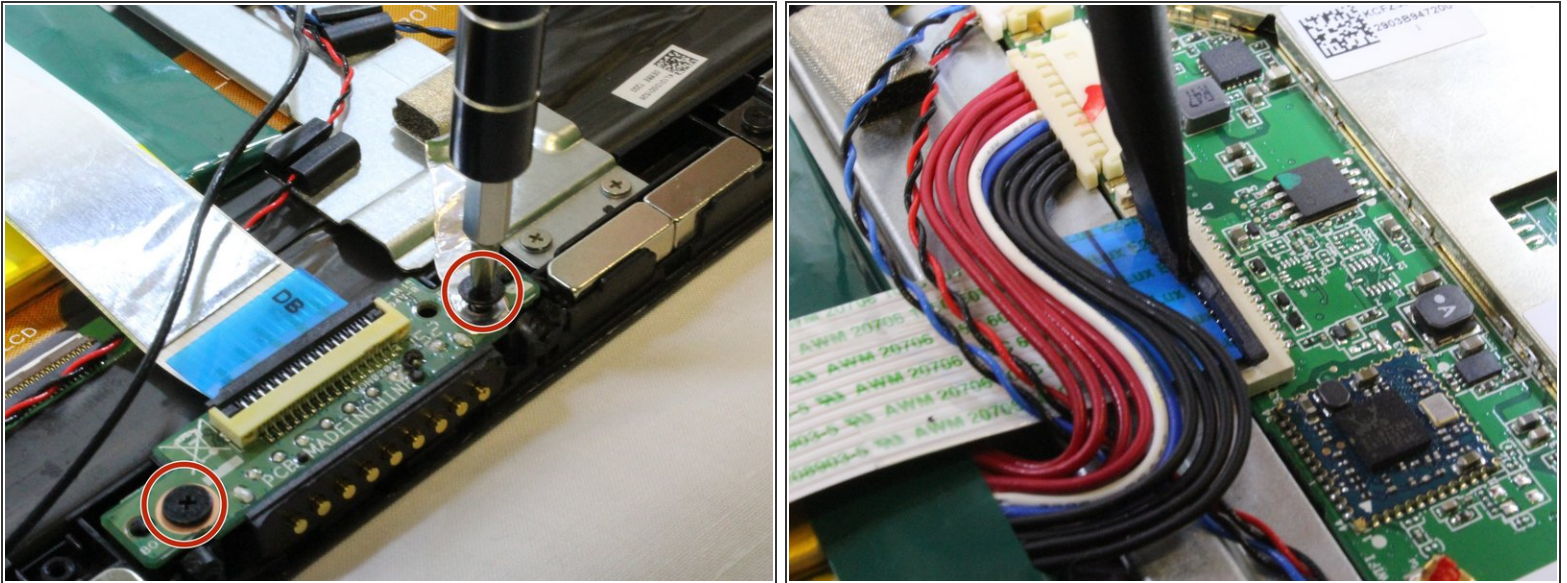
## Step 3



- Peel off all of the Polyimide tape (yellow tape).
- Remove the metallic tape covering the keyboard connection.



## Step 4



- Unscrew the two 3.5mm Phillips #0 screws and open the [ZIF latch](#).
- Gently remove the silver part covering the battery and set it aside.

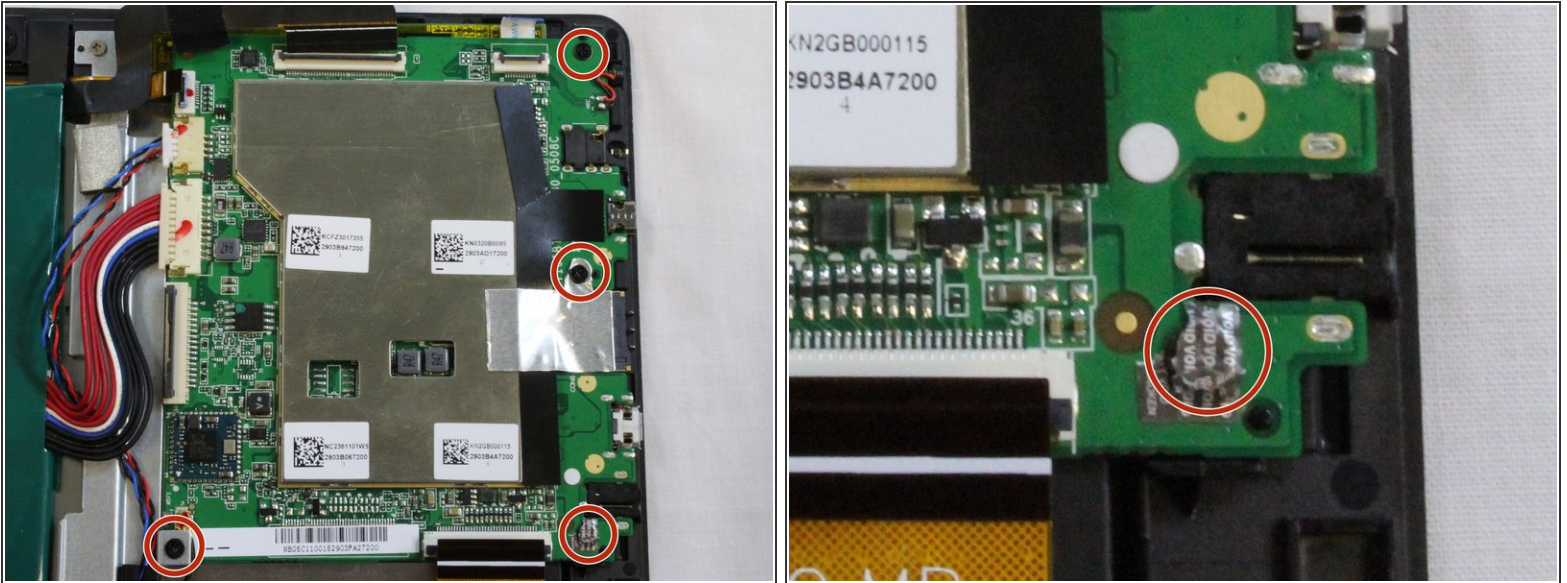
## Step 5



- Open the [ZIF \(Zero Insertion Force\) connectors](#) .
- Gently remove the ribbon cables.



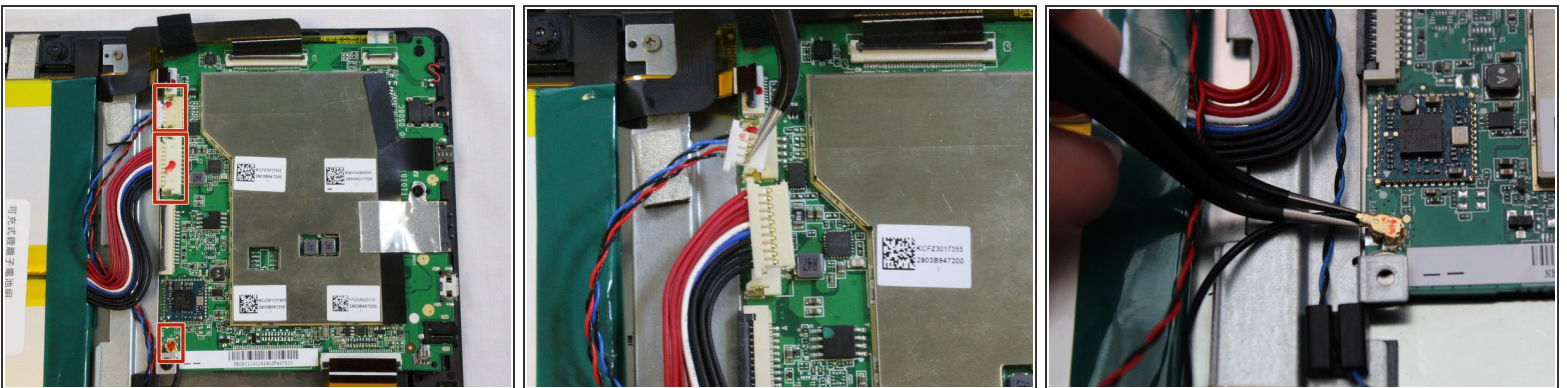
## Step 6



- Remove the four 4mm screws at the corners of the motherboard with the Phillips#0 bit screw.

**i** The screw beneath the metallic tape also needs to be removed.

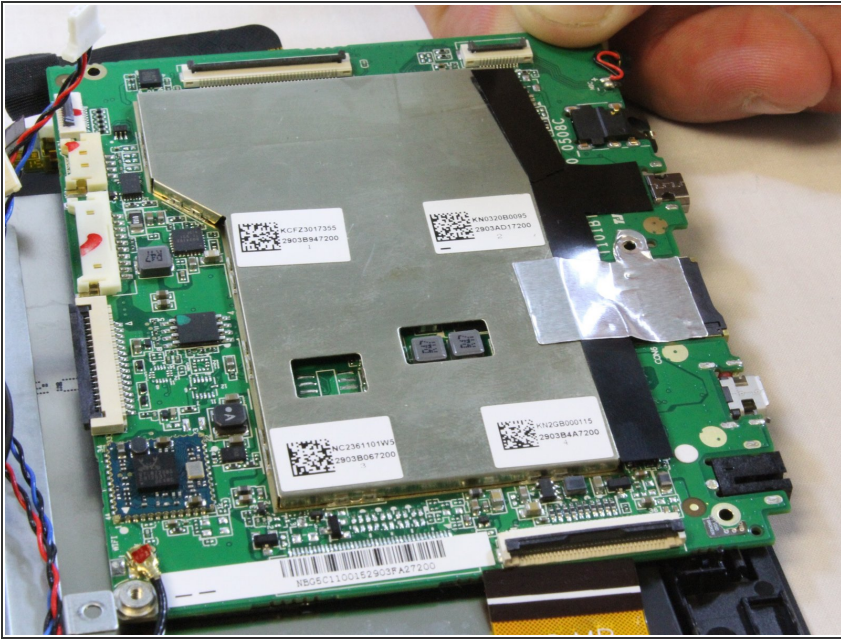
## Step 7



- Disconnect the three cables on the motherboard closest to the battery.

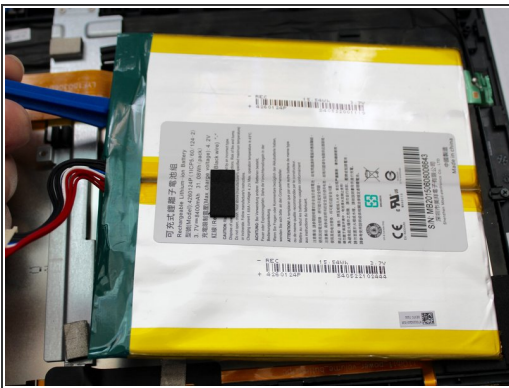
**i** These cables require some extra prying power to be removed.

## Step 8



- Slide out the motherboard and put it aside.

## Step 9 — Battery



- Use the plastic opening tool to separate the glue that holds the battery to the screen.
- ⚠ Avoid putting pressure on the glass while separating the battery from the screen.
- Remove the battery and set it aside.

To reassemble your device, follow these instructions in reverse order.