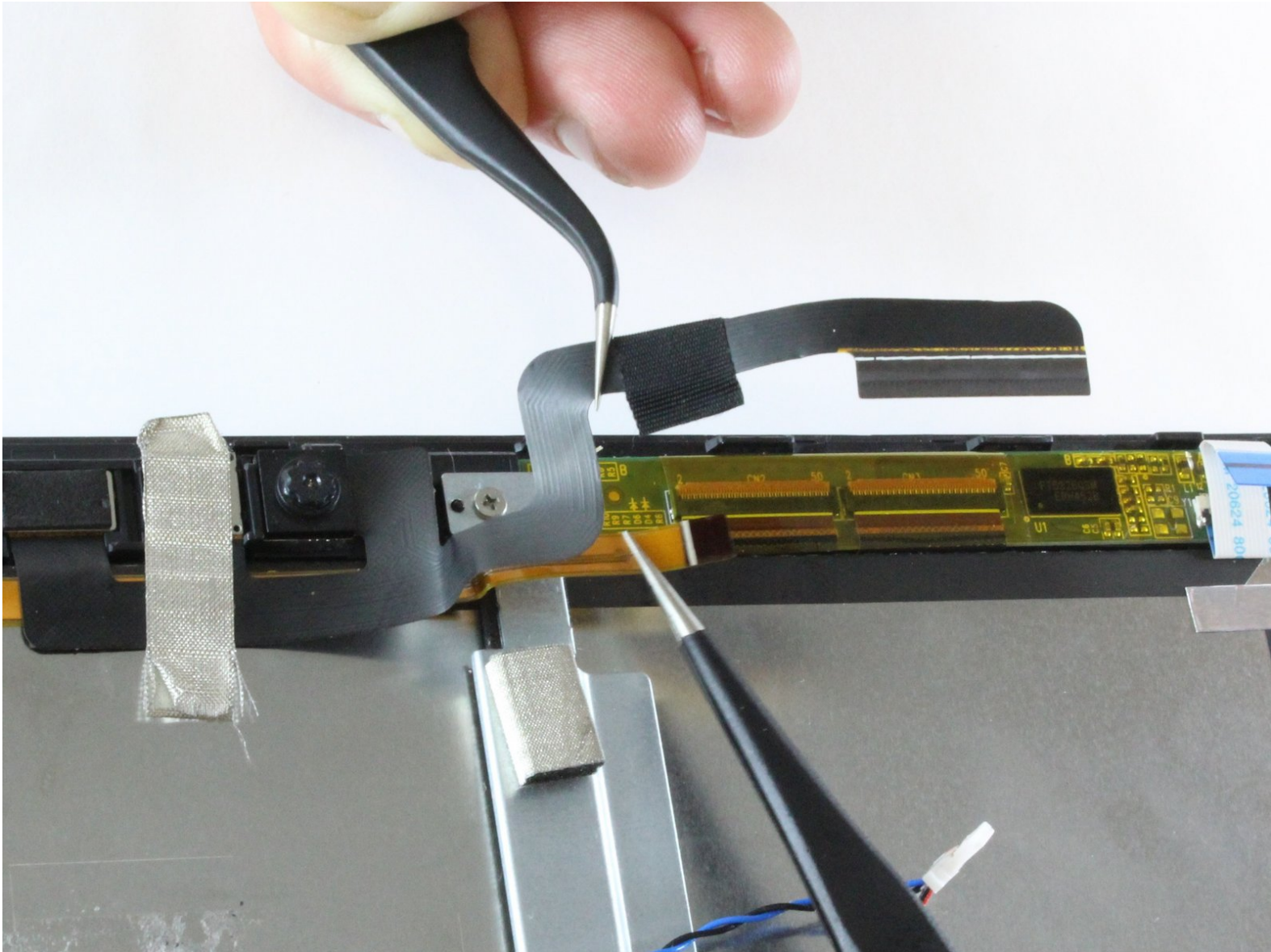




Acer One 10 S1002 145-A Camera Replacement

This guide will replace a broken front or back facing camera.

Written By: Shannon Griffin



INTRODUCTION

This guide shows you how to replace a broken or damaged front and back facing camera on your device. This replacement involves removing delicate ribbon connectors, which should be handled with great care.



TOOLS:

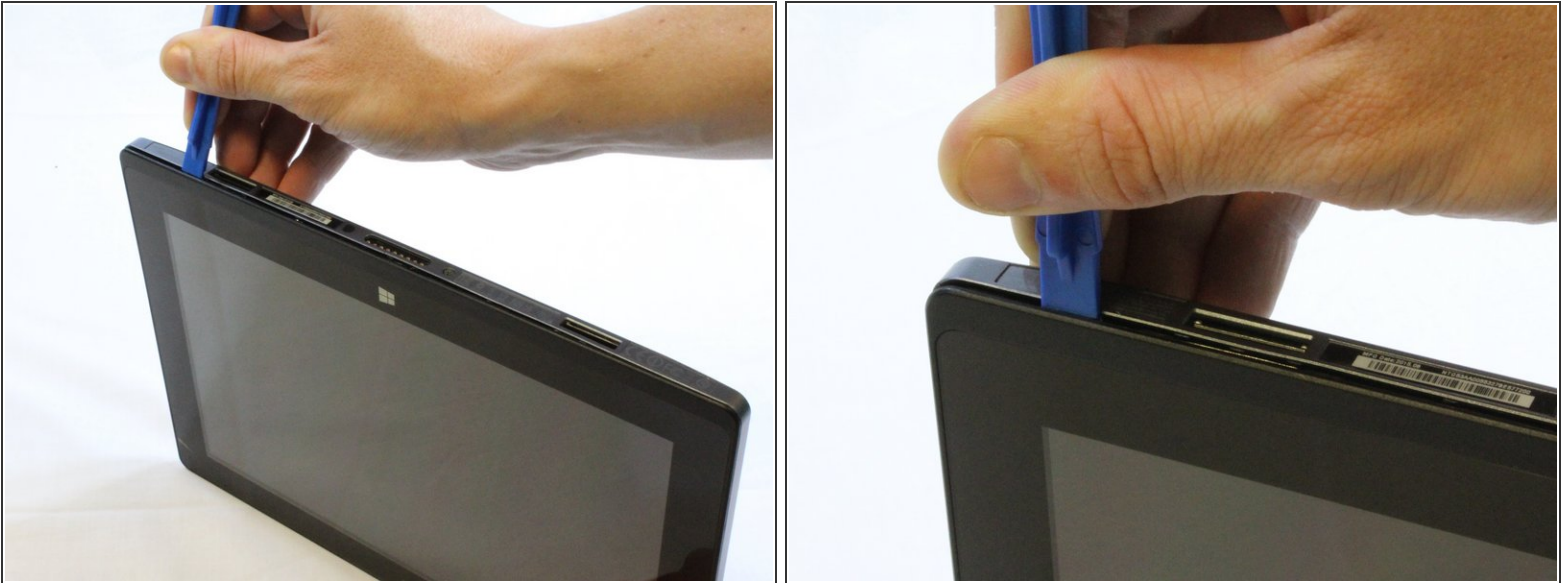
- [iFixit Opening Tools](#) (1)
 - [Precision Tweezers Set](#) (1)
 - [Phillips #0 Screwdriver](#) (1)
-

Step 1 — Motherboard



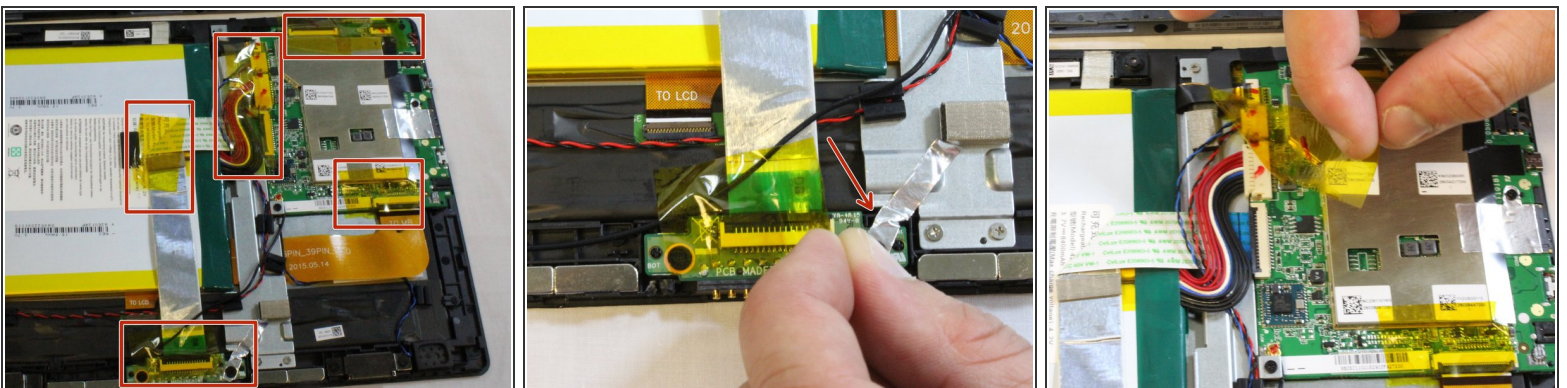
- Make sure that the tablet is turned off and disconnected from any power source.
- Disconnect the tablet from the keyboard attachment.
- If you have a Micro SD card in the tablet, remove it now.
- Remove the two 3.5 mm Phillips #0 screws on either side the keyboard connection.

Step 2



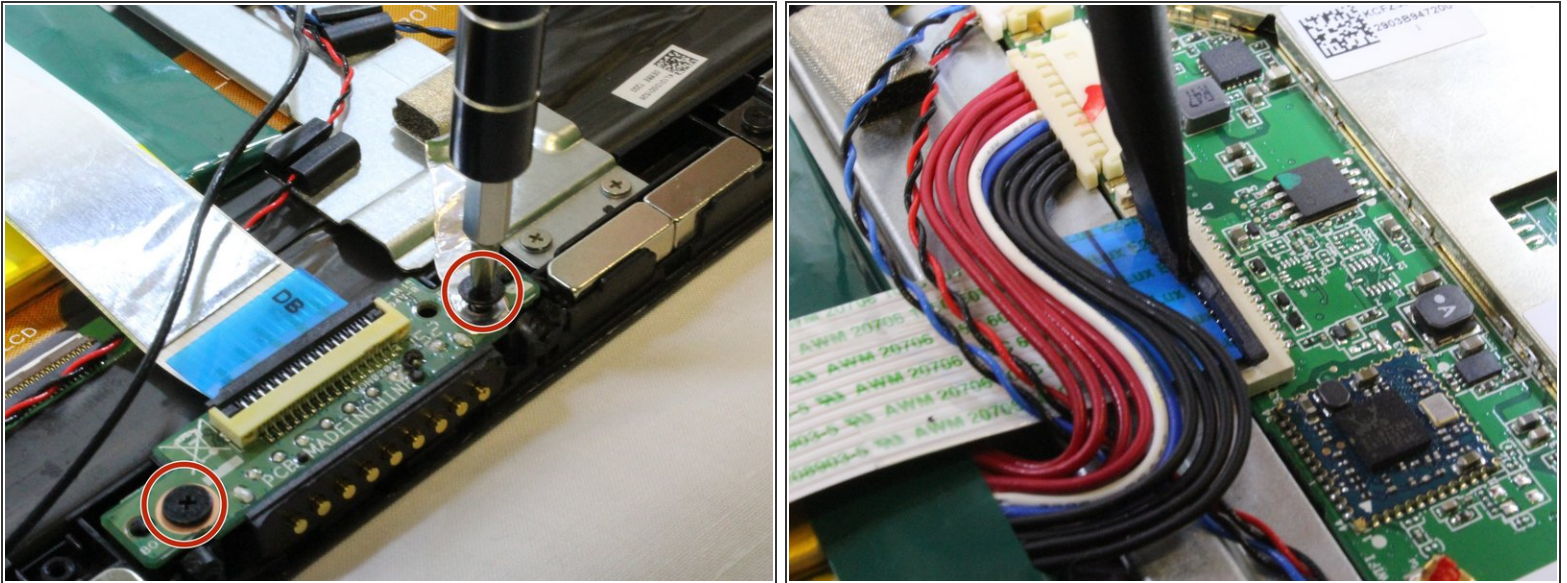
- Starting from a corner of the tablet, use the plastic opening tool to create a gap between the screen and the back covering.
- Slowly maneuver the plastic opening tool along the perimeter of the tablet to pry the screen and back covering apart.
- Separate the back covering from the screen.

Step 3



- Peel off all of the Polyimide tape (yellow tape).
- Remove the metallic tape covering the keyboard connection.

Step 4



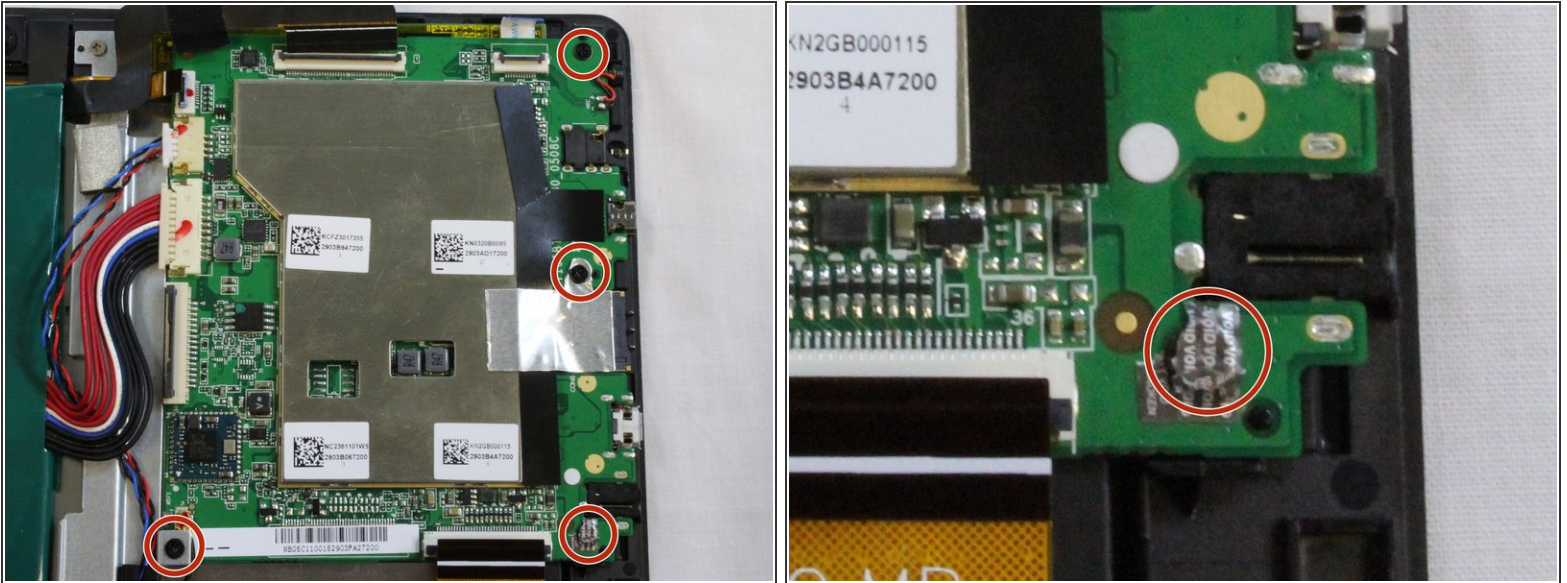
- Unscrew the two 3.5mm Phillips #0 screws and open the [ZIF latch](#).
- Gently remove the silver part covering the battery and set it aside.

Step 5



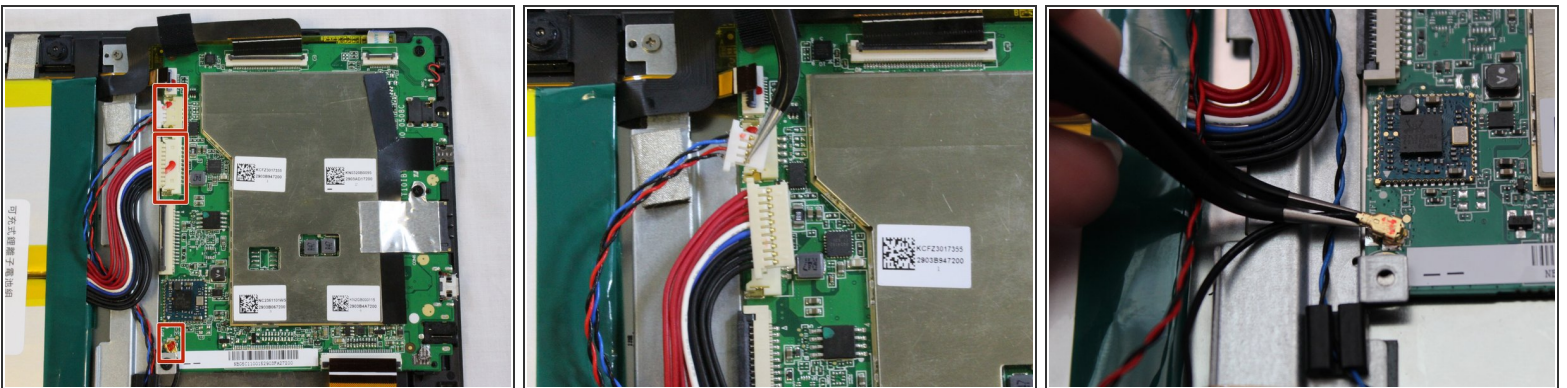
- Open the [ZIF \(Zero Insertion Force\) connectors](#) .
- Gently remove the ribbon cables.

Step 6



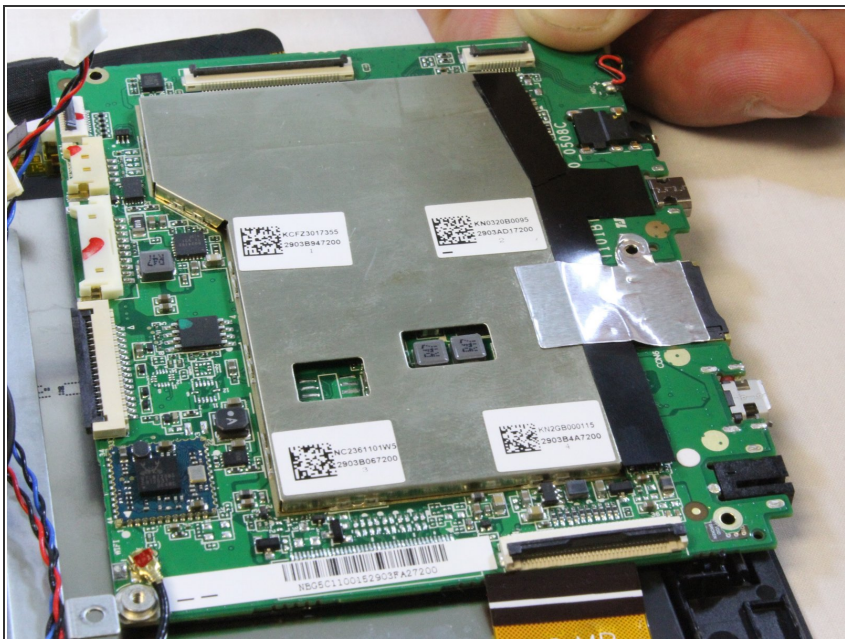
- Remove the four 4mm screws at the corners of the motherboard with the Phillips#0 bit screw.
- ⓘ The screw beneath the metallic tape also needs to be removed.

Step 7



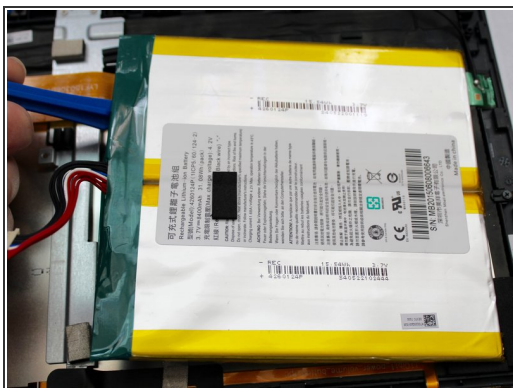
- Disconnect the three cables on the motherboard closest to the battery.
- ⓘ These cables require some extra prying power to be removed.

Step 8



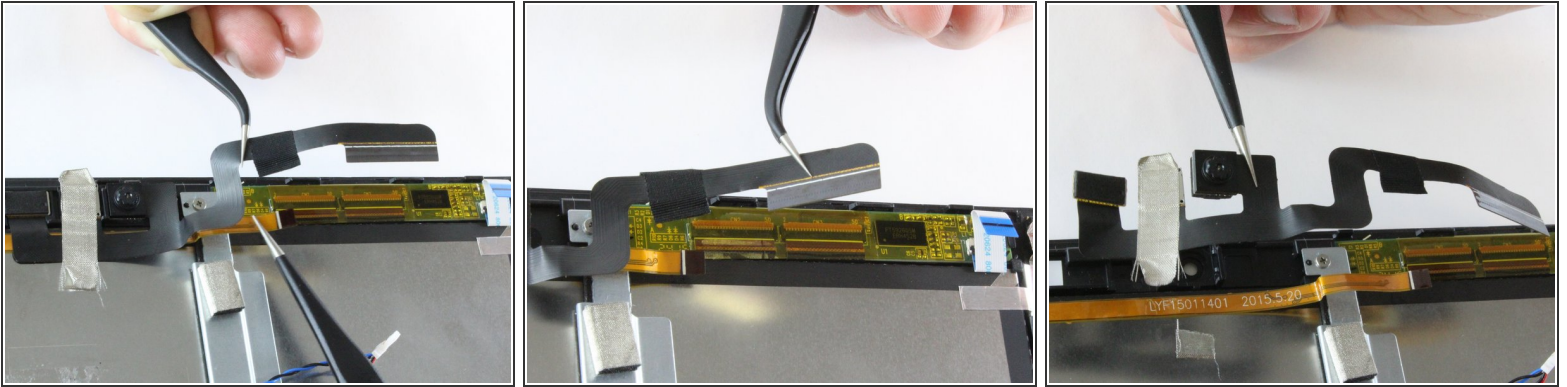
- Slide out the motherboard and put it aside.

Step 9 — Battery



- Use the plastic opening tool to separate the glue that holds the battery to the screen.
- ⚠ Avoid putting pressure on the glass while separating the battery from the screen.
- Remove the battery and set it aside.

Step 10 — Camera



- Separate the adhesive cable from the underlying copper ribbon cable.
- Gently pry off the camera from from tablet backing.
- Remove the camera and set it aside.

To reassemble your device, follow these instructions in reverse order.