



# Acer One 10 S1003-114M Battery Replacement

Replace your dying or weak battery to restore power back to your Acer One 10 S1003-114M.

Written By: Rachel Harrison



---

## INTRODUCTION

Is your battery is dead or weak, preventing it from powering your device? If so, here is a guide to fix the problem by removing and replacing your battery.



### TOOLS:

- [Jimmy](#) (1)
  - [Spudger](#) (1)
  - [Phillips #00 Screwdriver](#) (1)
-

## Step 1 — Battery



- Make sure the device is turned off and disconnected from any power source.
- To disconnect the tablet from the keyboard attachment, open the laptop and lift the tablet component up from the keyboard dock.

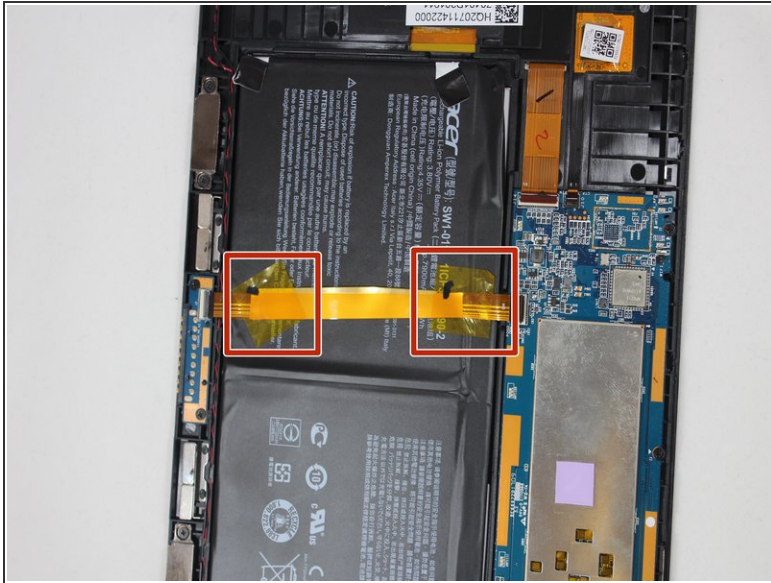
## Step 2



- ⓘ While handling the device, make sure to avoid pushing the power button. Device must remain powered off.
- ⚠ Metal spudgers and similar prying tools can damage internal components like the motherboard. It is ideal to use a regular black nylon spudger or a plastic opening tool, but for this device the metal jimmy and spudger were the only tools that worked.
- Starting from the corner of the tablet, use a jimmy to create a gap between the screen and the back covering.
- Insert a metal spudger in the gap that you created with the Jimmy.
- Slowly maneuver the metal spudger along the perimeter of the tablet to pry the screen and back covering apart.
- Separate the back covering from the screen.

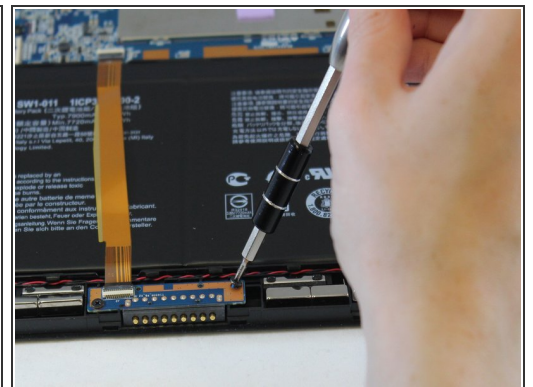
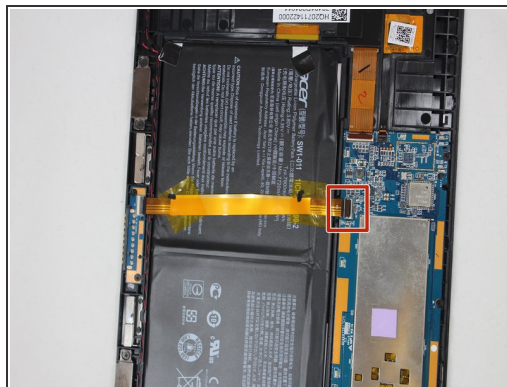
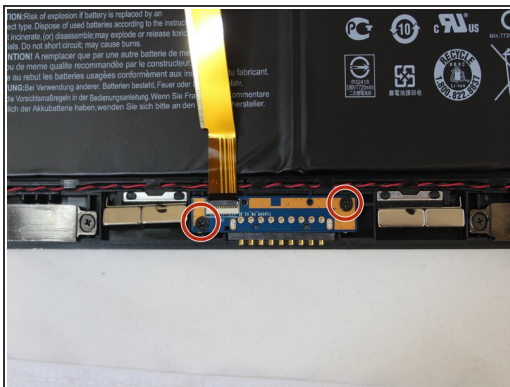


## Step 3



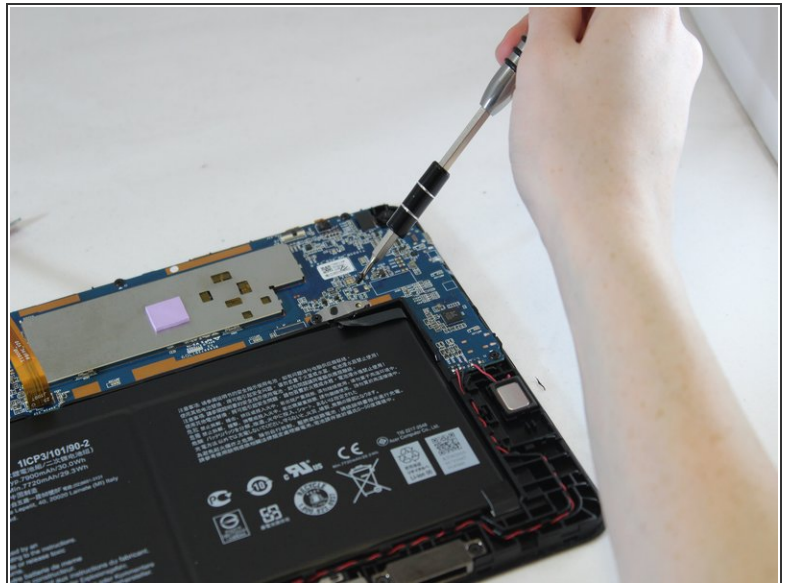
- Using your hands, peel off the Polyimide tape (yellow tape).

## Step 4



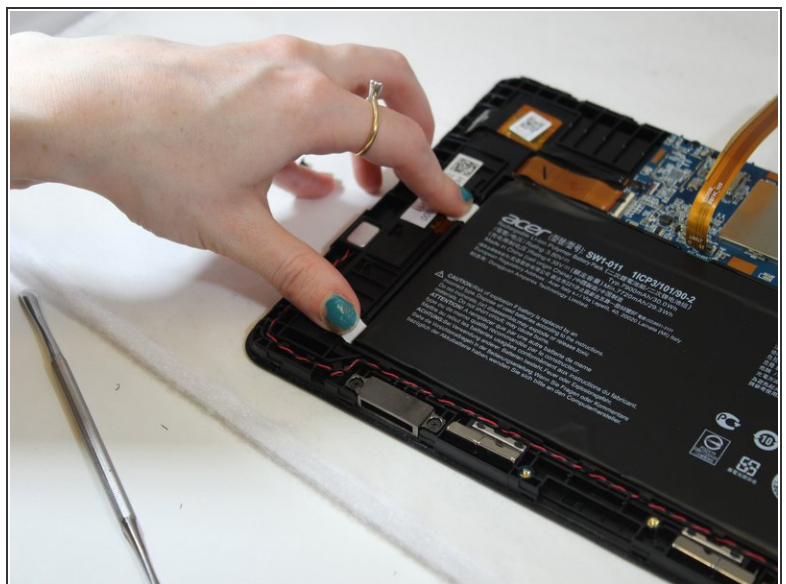
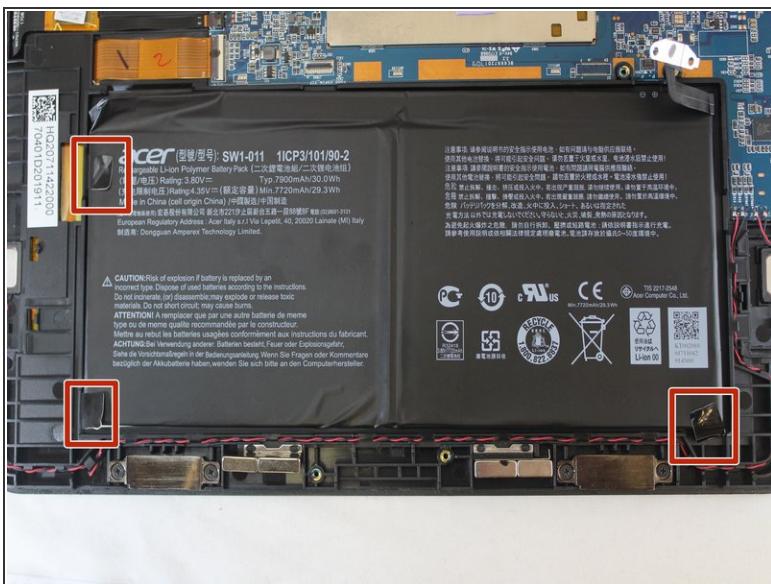
- Using the Phillips #00 screwdriver, unscrew the two 2mm screws at the bottom of the tablet and open the ZIF latch.
- Gently remove the gold ribbon cable covering the battery and set it aside.

## Step 5



- Using the Phillips #00 screwdriver, unscrew the two 2mm screws at the top right of the battery.

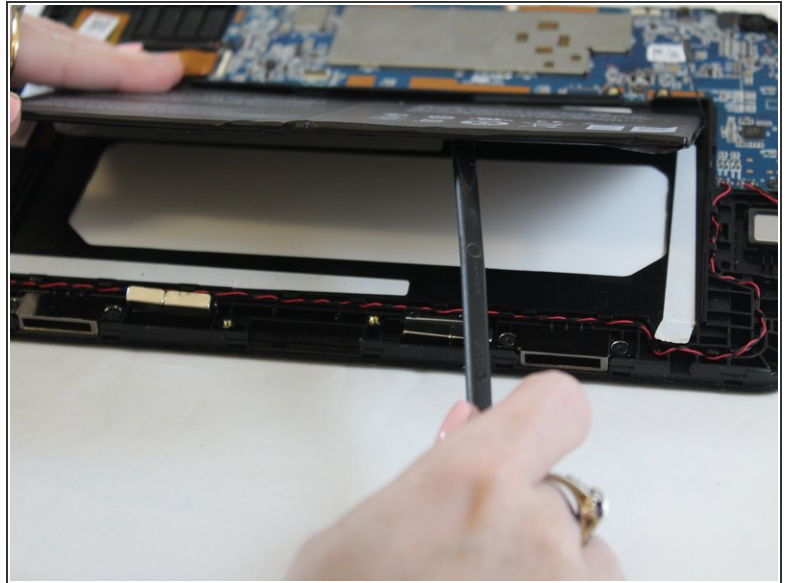
## Step 6




- Peel the three shiny black stickers from the battery (top left, bottom right, and bottom left), but keep them attached to the motherboard.



## Step 7



 Battery is adhered to the tablet.

 Avoid putting pressure on the glass while separating the battery from the screen.

- Use the spudger to separate the battery from glue that holds the battery to the screen. Carefully pry the battery from the tablet.

## Step 8



- Remove the battery from the device.

To reassemble your device, follow these instructions in reverse order.