



Acer One 10 S1003-114M Rear Camera Replacement

Replace your broken camera on your Acer One 10 S1003-114M to restore picture quality using this replacement guide.

Written By: Rachel Harrison



INTRODUCTION

Is your camera broken, preventing it from taking quality photos? If so, here is a guide to fix the problem. Be cautious when removing and handling the fragile camera.

TOOLS:

- [Phillips #00 Screwdriver](#) (1)
 - [Jimmy](#) (1)
 - [Metal Spudger](#) (1)
 - [Spudger](#) (1)
 - [Tweezers](#) (1)
-



Step 1 — Battery



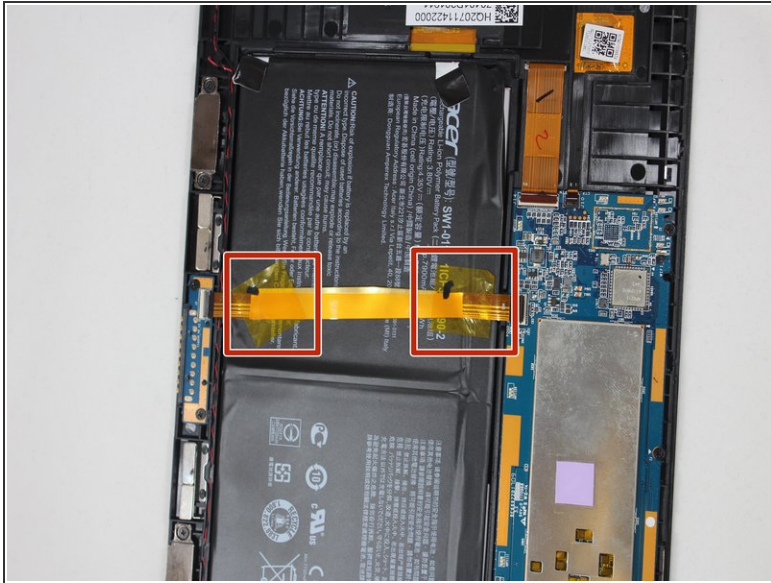
- Make sure the device is turned off and disconnected from any power source.
- To disconnect the tablet from the keyboard attachment, open the laptop and lift the tablet component up from the keyboard dock.

Step 2



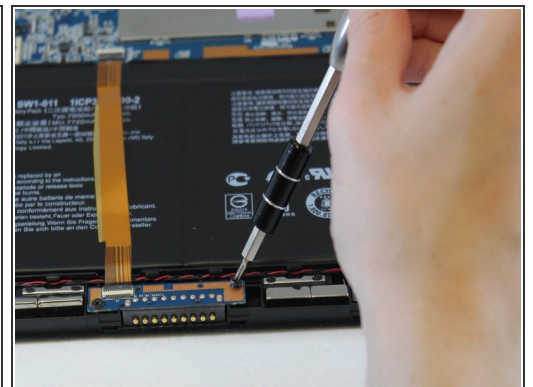
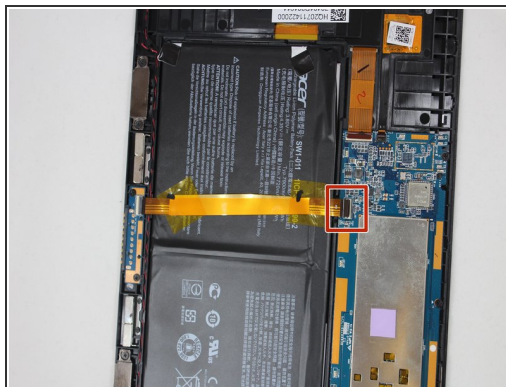
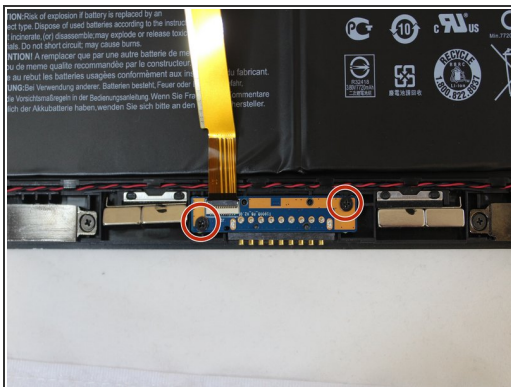
-  While handling the device, make sure to avoid pushing the power button. Device must remain powered off.
-  Metal spudgers and similar prying tools can damage internal components like the motherboard. It is ideal to use a regular black nylon spudger or a plastic opening tool, but for this device the metal jimmy and spudger were the only tools that worked.
- Starting from the corner of the tablet, use a jimmy to create a gap between the screen and the back covering.
- Insert a metal spudger in the gap that you created with the Jimmy.
- Slowly maneuver the metal spudger along the perimeter of the tablet to pry the screen and back covering apart.
- Separate the back covering from the screen.

Step 3



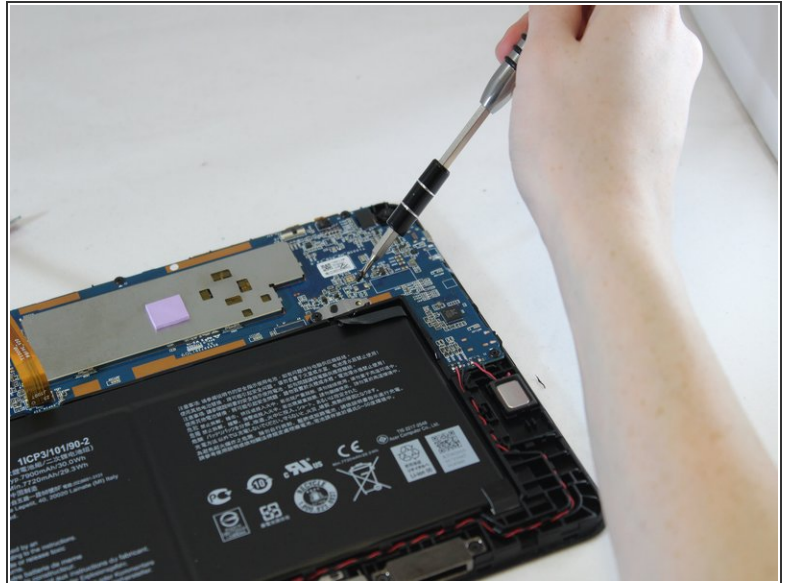
- Using your hands, peel off the Polyimide tape (yellow tape).

Step 4

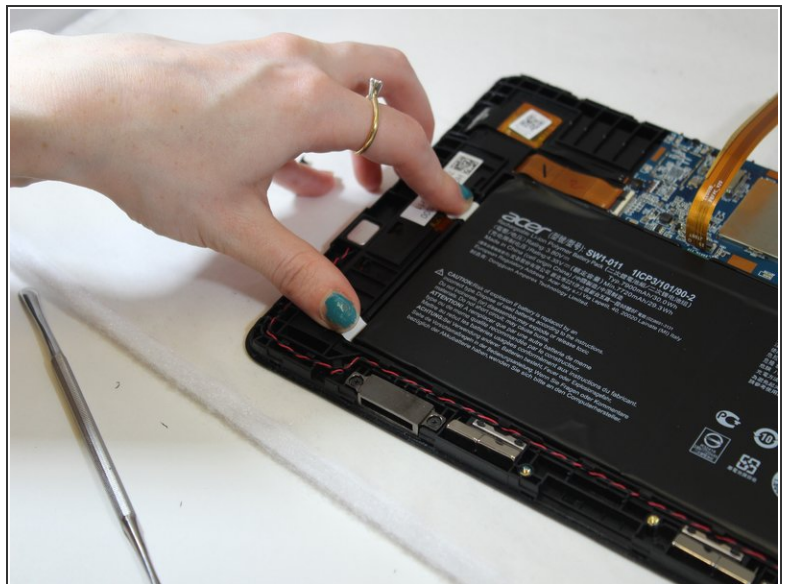
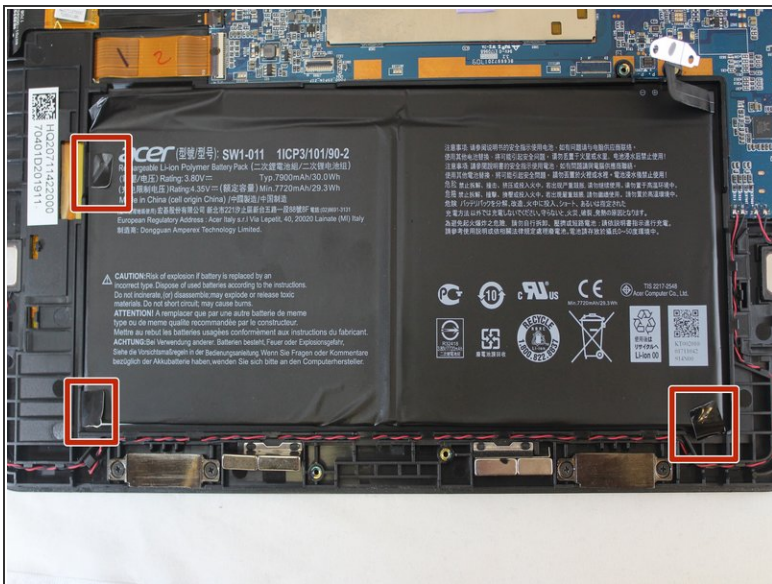


- Using the Phillips #00 screwdriver, unscrew the two 2mm screws at the bottom of the tablet and open the ZIF latch.
- Gently remove the gold ribbon cable covering the battery and set it aside.

Figure 1 shows the back of the laptop with the battery compartment cover removed. Two screws are circled in red, indicating they should be removed to access the battery.

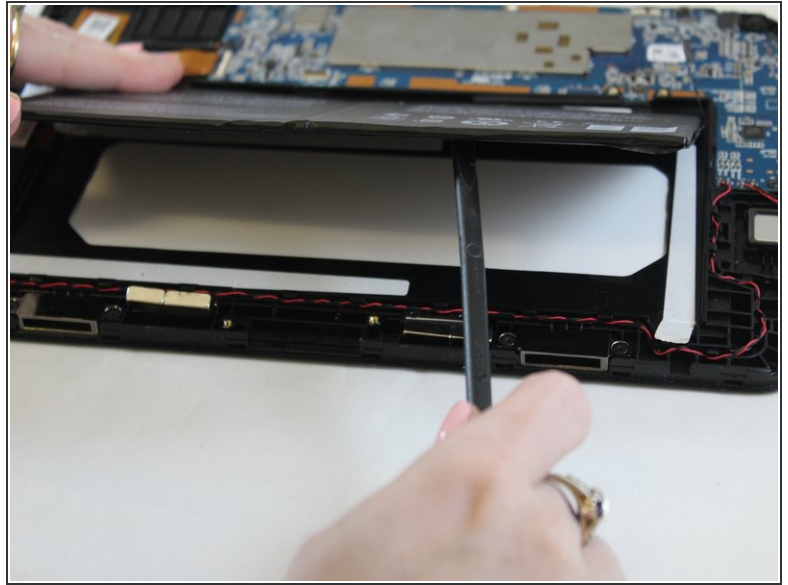



- ## Step 6




- Page 6 of 10

Step 7



 Battery is adhered to the tablet.

 Avoid putting pressure on the glass while separating the battery from the screen.

- Use the spudger to separate the battery from glue that holds the battery to the screen. Carefully pry the battery from the tablet.

Step 8



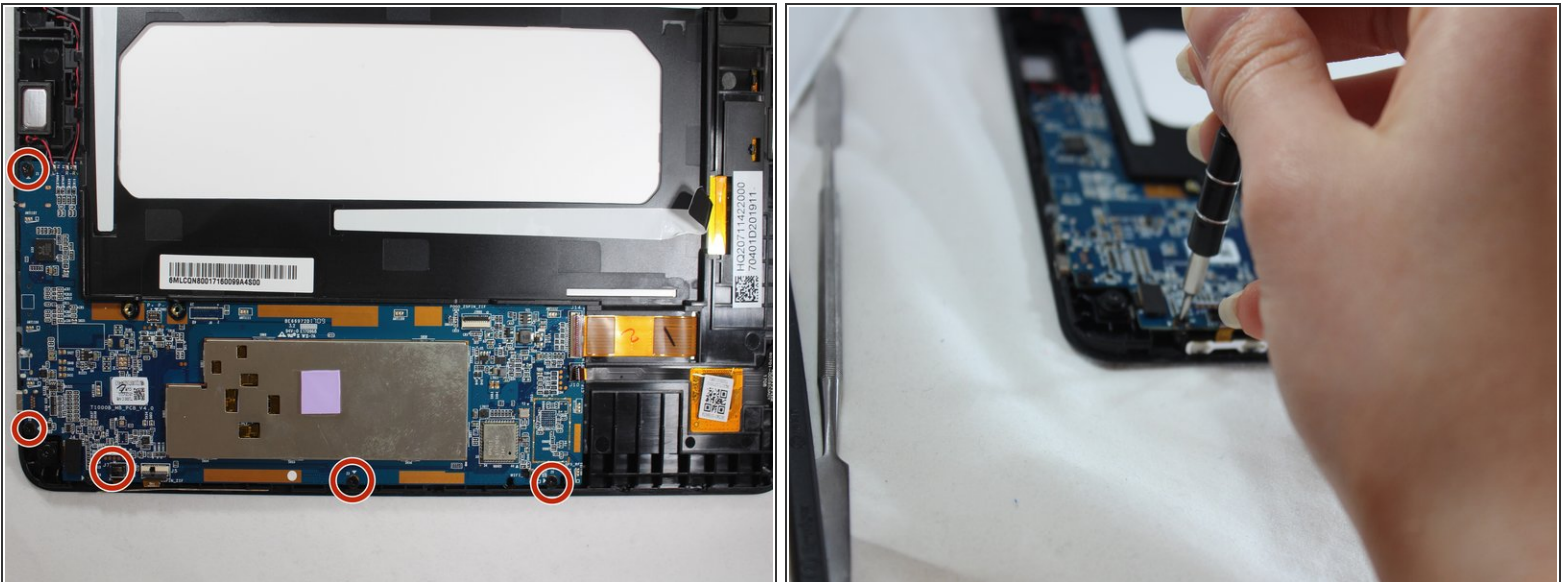
- Remove the battery from the device.

Step 9 — Motherboard



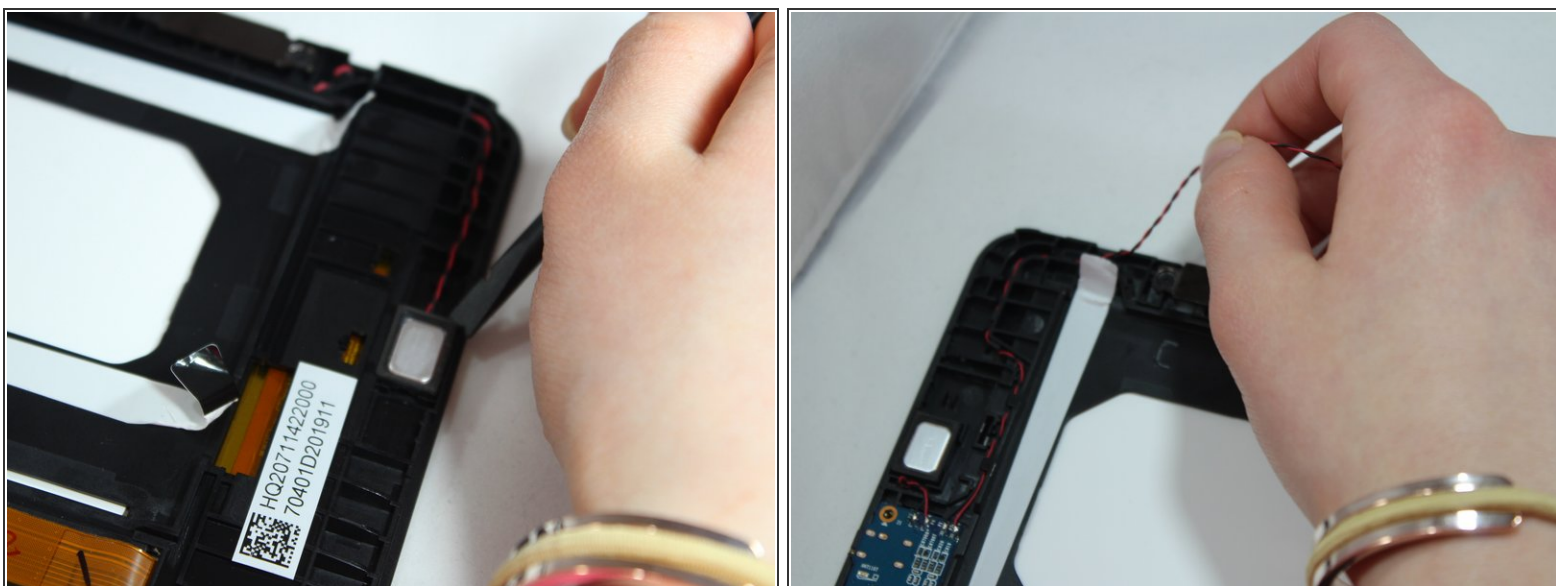
- Using a spudger, disconnect the two ribbon cables on the top right and the three on the bottom left of the motherboard.

Step 10



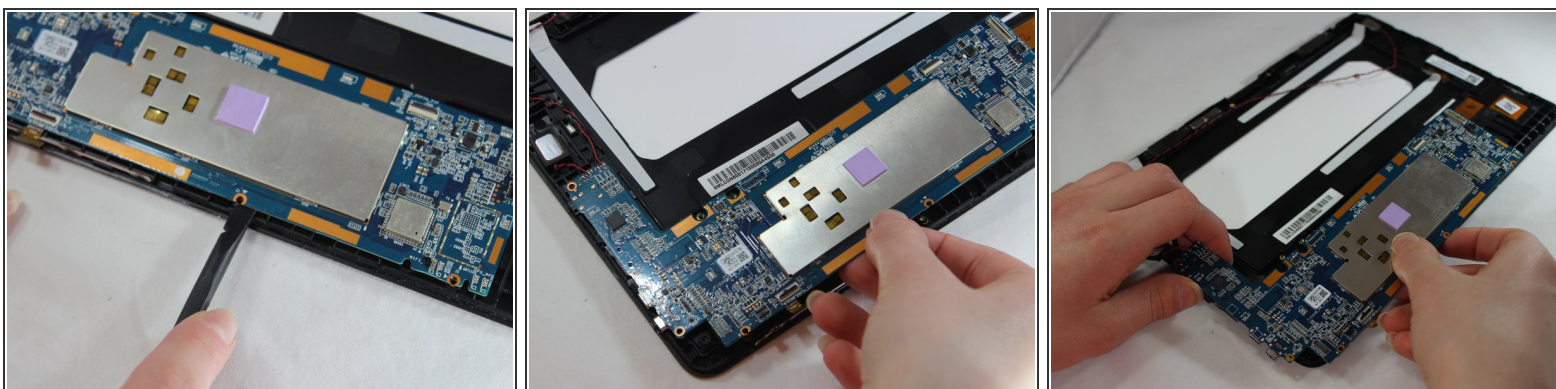
- Use a Phillips #00 screwdriver to remove the five 2mm screws from the motherboard. There are two on the left edge and three on the bottom edge of the motherboard.

Step 11



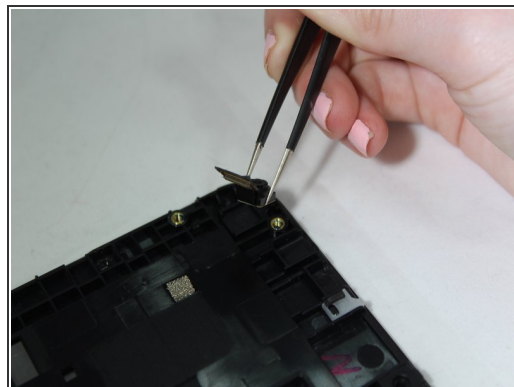
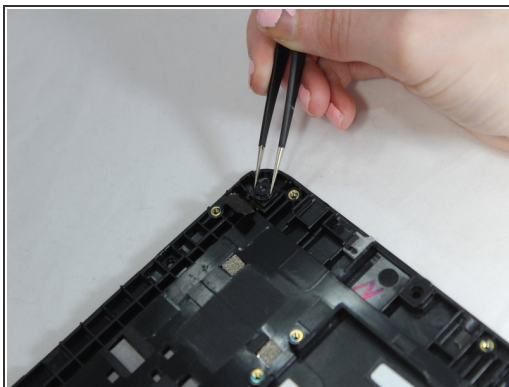
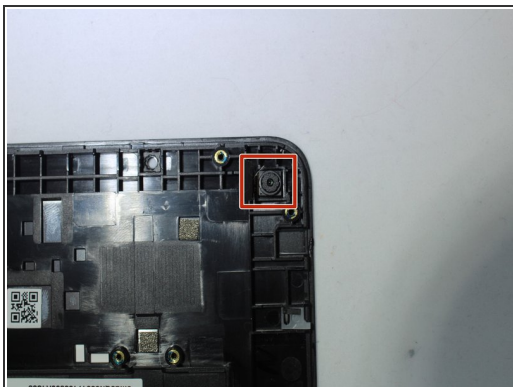
- Using the spudger, pry the speaker from the right side of the tablet.
- Lift the red and black wires attached to speaker on right side out of the track to where it connects to motherboard and the speaker on the left side.
- Using the spudger, pry the speaker from the left side of the tablet.


Step 12



- Use a spudger to create a gap between motherboard and back covering.
- Using the spudger, gently pry the motherboard away from the back covering.
- Gently lift and remove the motherboard and speakers from tablet.

Step 13 — Rear Camera



 Be careful when using tweezers on camera. Clamping tweezers too hard could result in broken glass.

- Use tweezers to grab the camera's edges and gently lift the camera up from tablet backing.
- Remove the camera from the device.

To reassemble your device, follow these instructions in reverse order.