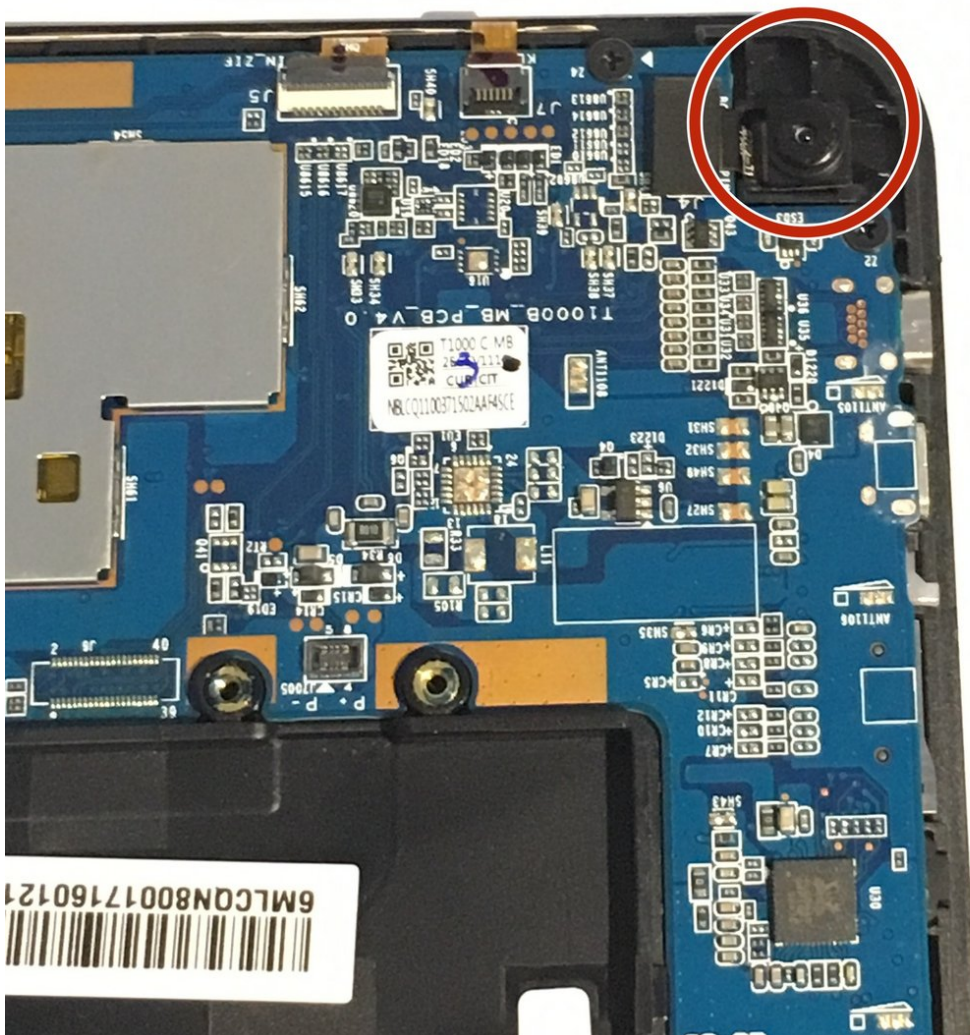




Acer One 10 S1003-19GY Rear/Front Camera Replacement

Replace front or rear camera for Acer One 10 S1003-19GY.

Written By: Trey Wintzinger



INTRODUCTION

Replacement guide for a damaged front/rear camera on the tablet.



TOOLS:

- [iFixit Opening Tools](#) (1)
 - [Flathead Screwdriver](#) (1)
 - [Phillips #0 Screwdriver](#) (1)
-

Step 1 — Back Panel



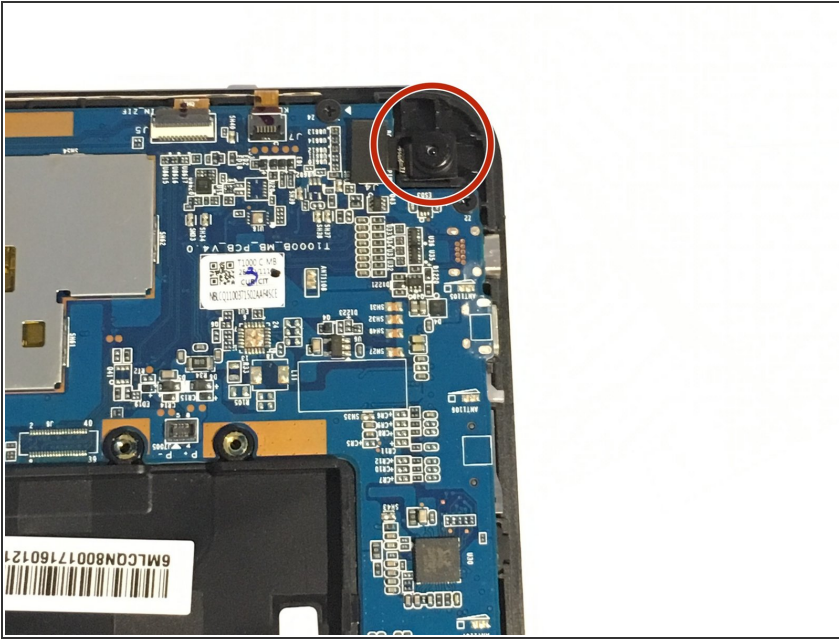
- Power off the device and make sure it is disconnected from any external devices.
- Use a plastic opening tool to create a gap between the front and back casing of the device.
- Slowly maneuver the plastic tool around the entire perimeter of the tablet to separate the front and back.

Step 2



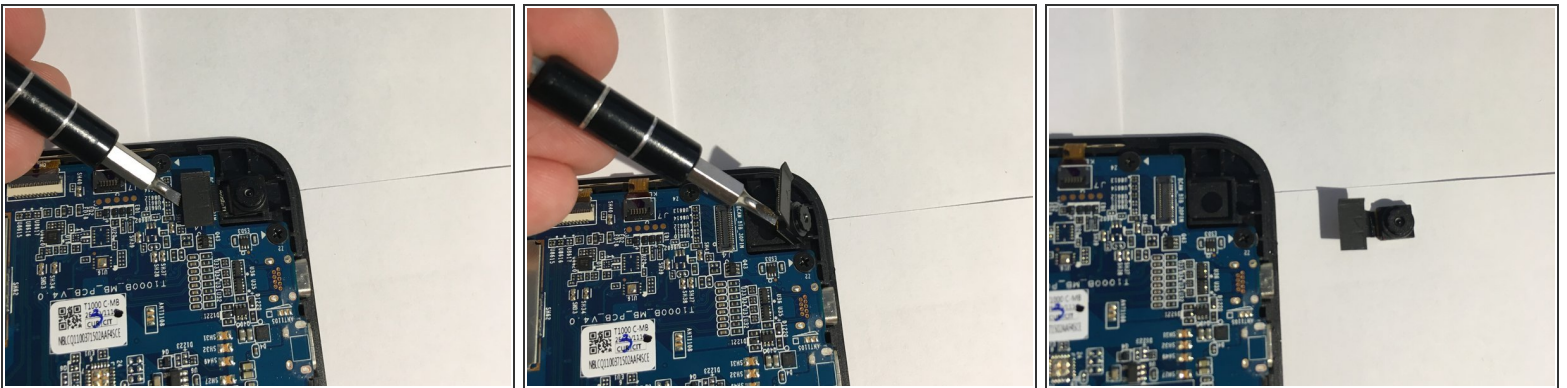
- Set the device screen side down and remove the back casing.

Step 3 — Front/Rear Camera



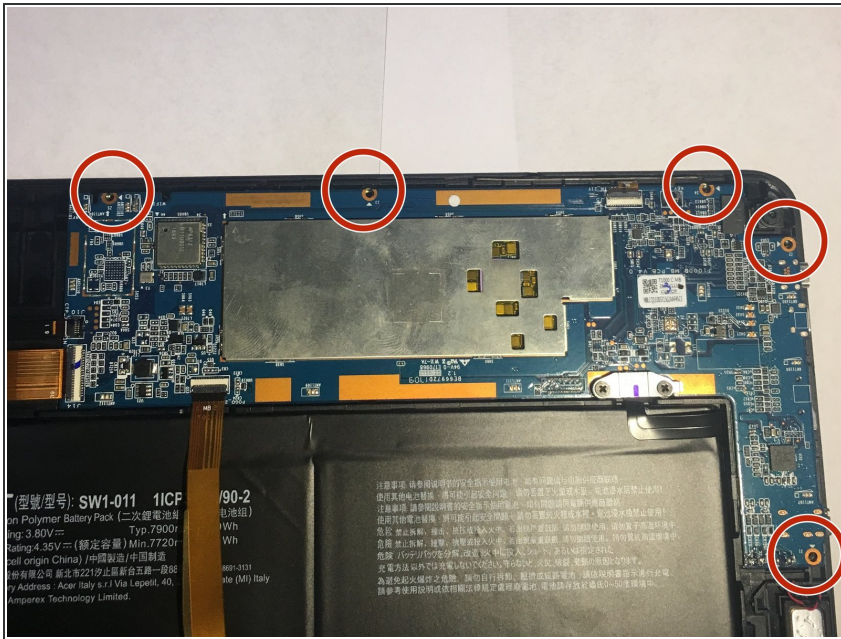
- Locate the Rear Camera in the upper right hand corner of the motherboard.

Step 4



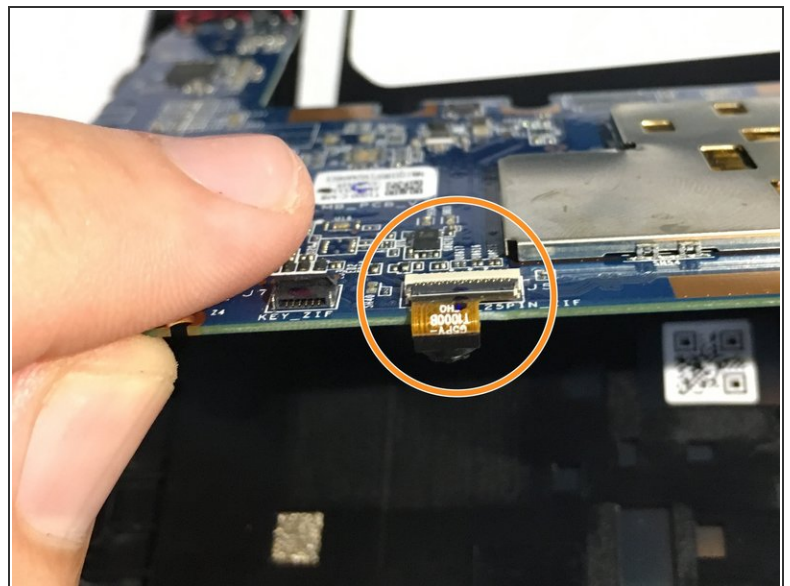
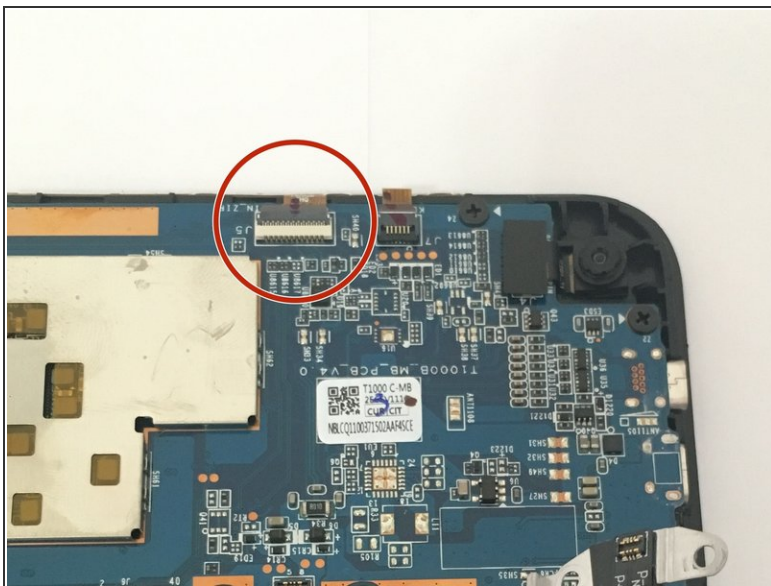
- Using a relatively thin flat head screwdriver, pry the camera connection from the motherboard.
- The connection should remove easily as it just snaps to the motherboard.

Step 5



- Remove the five screws on the outer edge of the motherboard using a Phillips #0 screwdriver.

Step 6



- Open the black flap on the connection and gently pull the ribbon from it.
- Slightly raise the motherboard from the upper side to remove the camera as shown.

To reassemble your device, follow these instructions in reverse order.