



# Acer One 10 S1003-19GY WiFi Antenna Replacement

Use this guide to replace the Acer One 10 S1003-19GY.

Written By: Trey Wintzinger



---

## INTRODUCTION

Replacement fix for broken WiFi connection if all other troubleshooting options have failed.

---



### TOOLS:

- [iFixit Opening Tools](#) (1)
-

## Step 1 — Back Panel



- Power off the device and make sure it is disconnected from any external devices.
- Use a plastic opening tool to create a gap between the front and back casing of the device.
- Slowly maneuver the plastic tool around the entire perimeter of the tablet to separate the front and back.

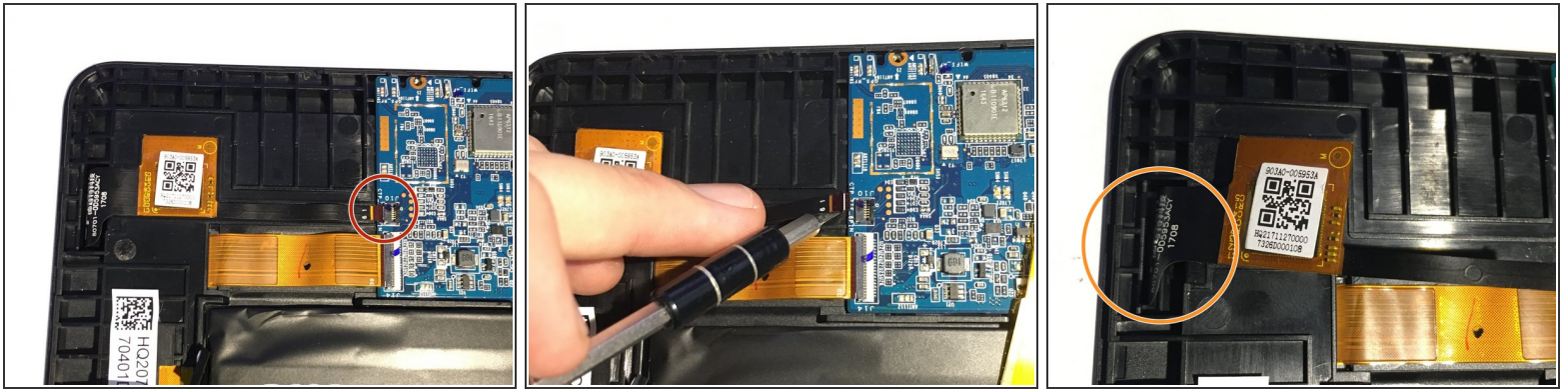
## Step 2



- Set the device screen side down and remove the back casing.



## Step 3 — WiFi Antenna



- Disconnect the black ribbon connection attached to the motherboard.
- Remove the chip fully by pulling the plastic tab on the left out.

To reassemble your device, follow these instructions in reverse order.