



Acer S200HL LCD Monitor Motherboard Replacement

This motherboard replacement guide will show the necessary steps in opening up the monitor's back panel, removing the faulty motherboard, and placing a new motherboard.

Written By: Jeffrey Kong



INTRODUCTION

The motherboard holds important electronic components and directs signals from the computer to the monitor screen.



TOOLS:

- [Phillips #2 Screwdriver](#) (1)
- [iFixit Opening Tools](#) (1)
- [5 mm Hex Screwdriver](#) (1)



PARTS:

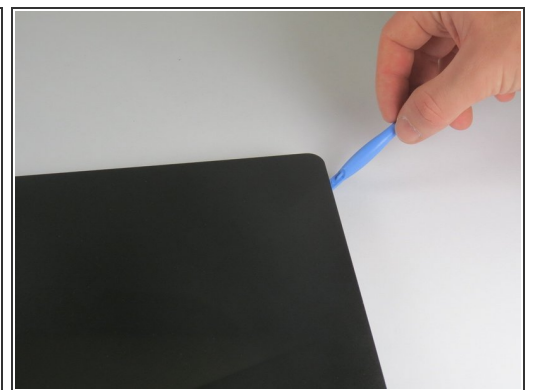
- [Acer S200HL Motherboard](#) (1)

Step 1 — Removing the Stand



- Place the monitor screen face down.
- Firmly hold the base of the stand with one hand and the bottom of the monitor with the other hand.
- Pull the stand away from the monitor.

Step 2 — Removing the Back Panel



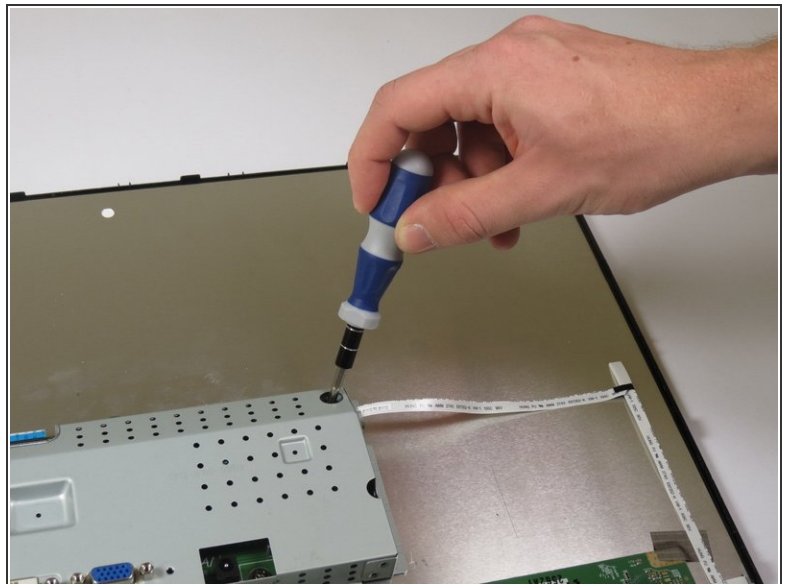
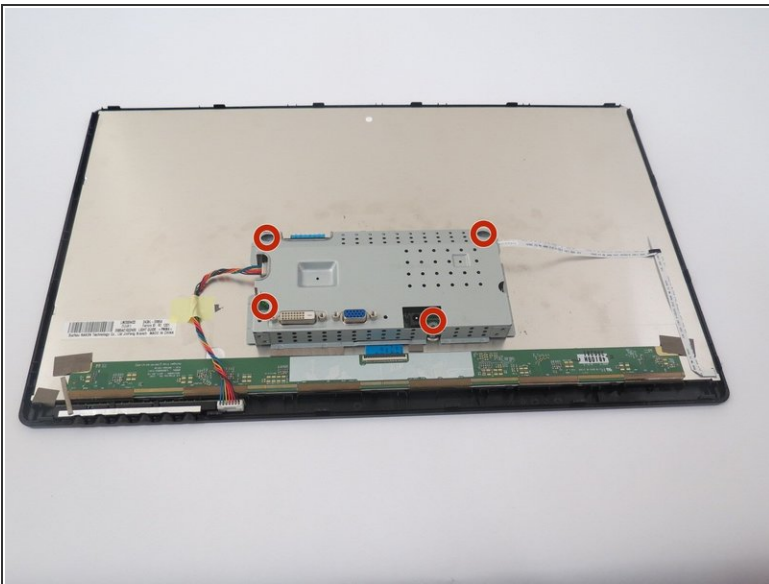
- Use the plastic opening tool to pry the back panel from the front panel.
- Start at one point of the crease and pry along the edge of the entire monitor for the best results.

Step 3



- Gently lift back panel away from the monitor.

Step 4 — Removing Interior Motherboard Casing



⚠ Be sure to keep track of where you place your screws. A magnetic mat is great for keeping your screws in one spot.

- Unscrew the four 7.5 mm Phillips #2 screws connecting the motherboard to the metal casing.

Step 5



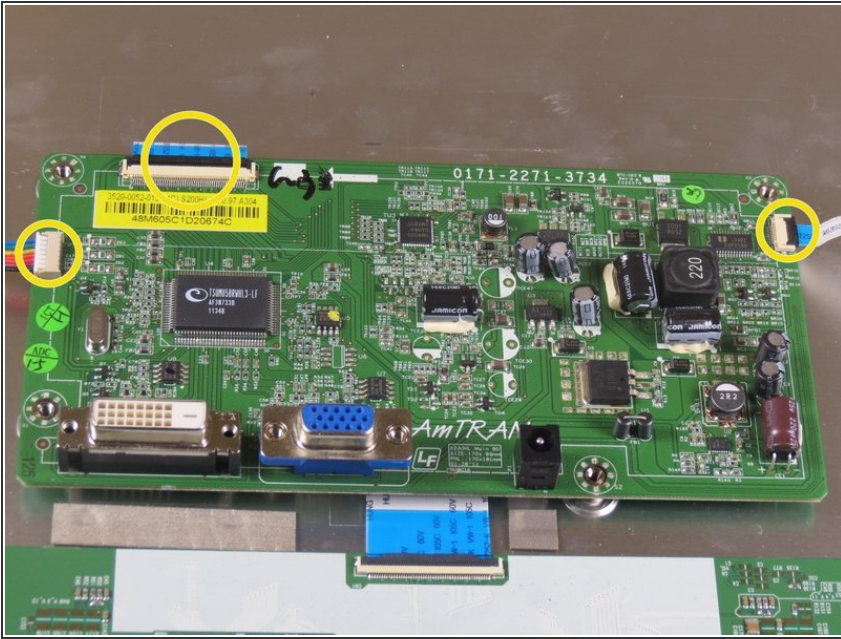
- Remove the four 10 mm hex screws.

Step 6



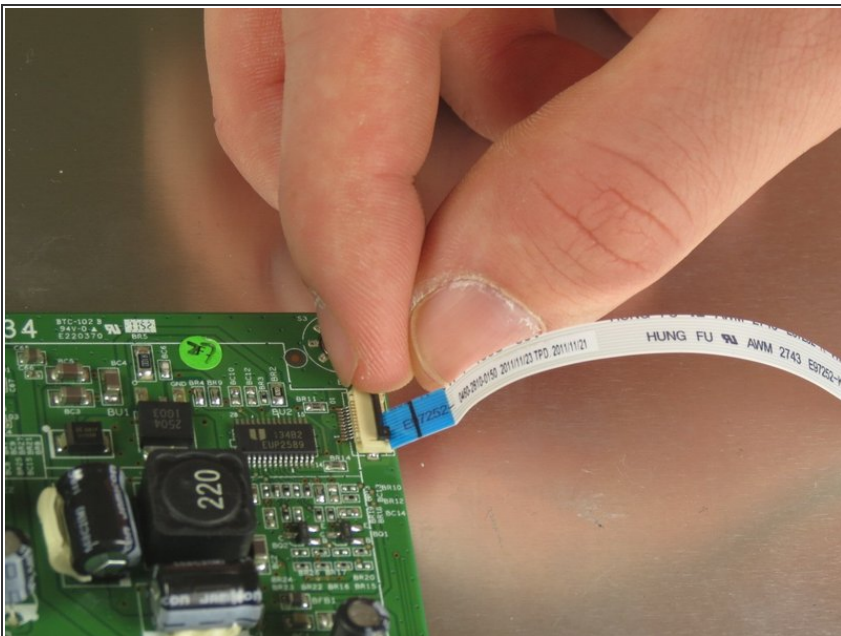
- Gently lift the motherboard casing from the monitor.

Step 7 — Removing the Connections to the Motherboard



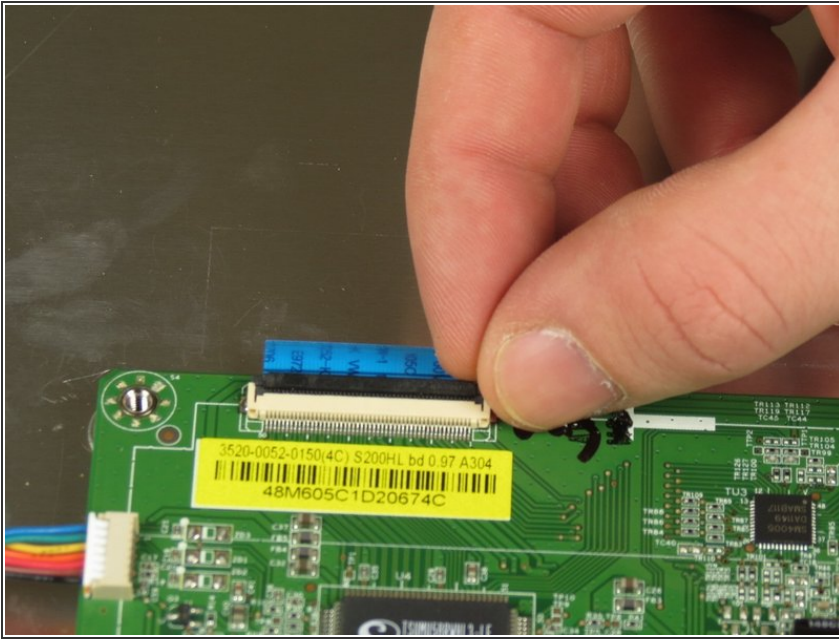
- ⓘ The following steps give instructions for detaching the three connectors shown in the picture.

Step 8 — Removing the No Fuss Ribbon Cable Connector



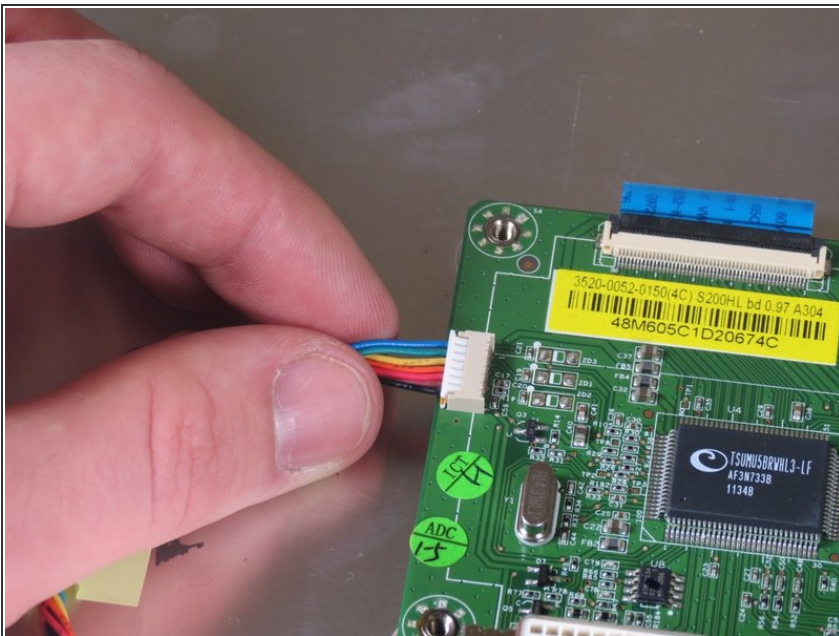
- Lift the black seal to release the small ribbon connector (the No Fuss Ribbon Cable connector) from the motherboard.
- ⓘ The connector will be released from the motherboard immediately.

Step 9 — Removing the ZIF Connectors



- Lift the black seal to release the large ribbon connector (the ZIF connector).
- ⓘ The connector will be released from the motherboard immediately.

Step 10 — Removing the Bundled Cable Connector



- Pull the bundled cable connector gently away from motherboard.

Step 11 — Removing the Motherboard



- Gently lift the motherboard to remove it from the monitor.

To reassemble your device, follow these instructions in reverse order.