



Acer S200HL LCD Monitor ZIF Connector Replacement

This replacement guide will show the necessary steps to replace the ZIF connector. Steps will include opening up the monitor's back panel, removing the faulty motherboard, and removing the ZIF connector.

Written By: Jeffrey Kong



INTRODUCTION

The ZIF connector is an important electronic connection between the motherboard and the monitor screen.



TOOLS:

- [Phillips #2 Screwdriver](#) (1)
- [iFixit Opening Tools](#) (1)
- [5mm Hex Screwdriver](#) (1)



PARTS:

- [ZIF connector](#) (1)

Step 1 — Removing the Stand



- Place the monitor screen face down.
- Firmly hold the base of the stand with one hand and the bottom of the monitor with the other hand.
- Pull the stand away from the monitor.

Step 2 — Removing the Back Panel



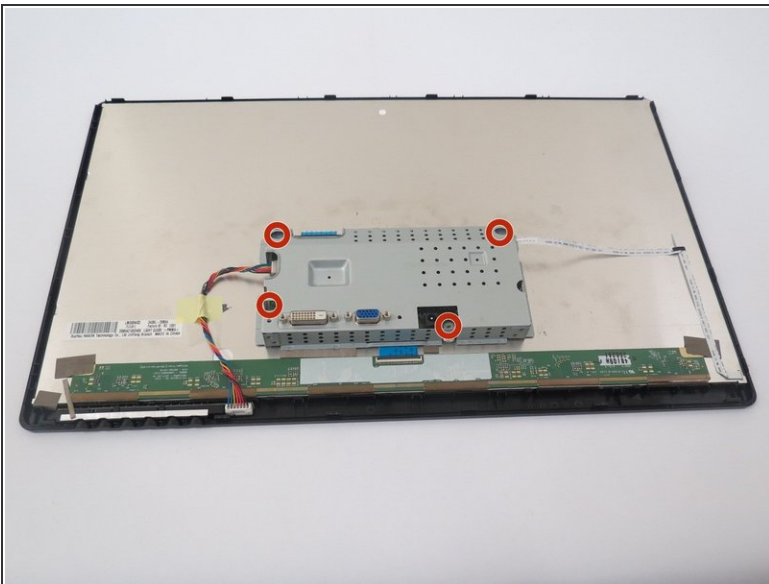
- Use the plastic opening tool to pry the back panel from the front panel.
- Start at one point of the crease and pry along the entire monitor for the best results.


Step 3



- Gently lift the back panel away from the monitor.

Step 4 — Removing Interior Motherboard Casing



 Be sure to keep track of where you place your screws. A magnetic mat is great for keeping your screws in one spot.

- Unscrew the four 7.5 mm Phillips #2 screws connecting the motherboard to the metal casing.

Step 5



- Remove the four 10 mm hex screws.

Step 6



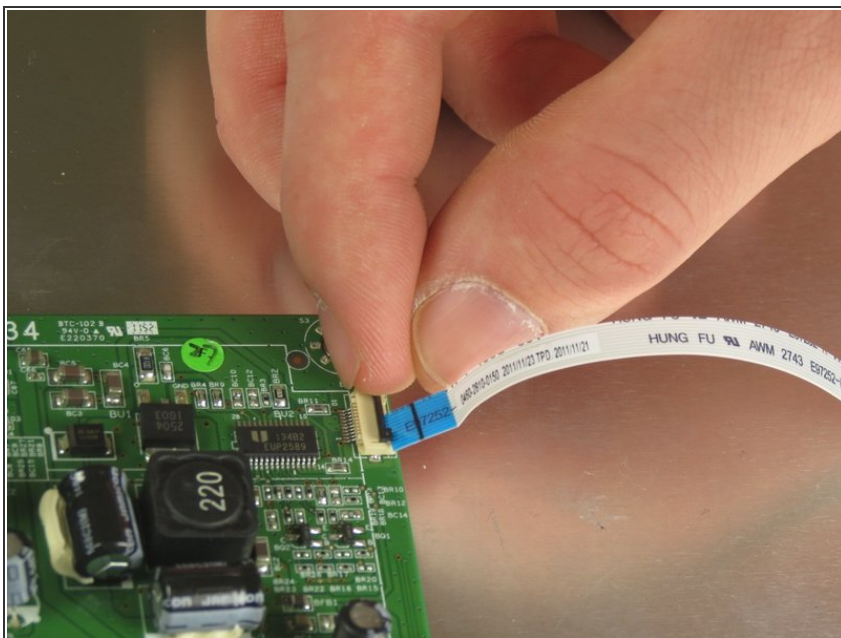
- Gently lift the motherboard casing from the monitor.

Step 7 — Removing the Connections to the Motherboard



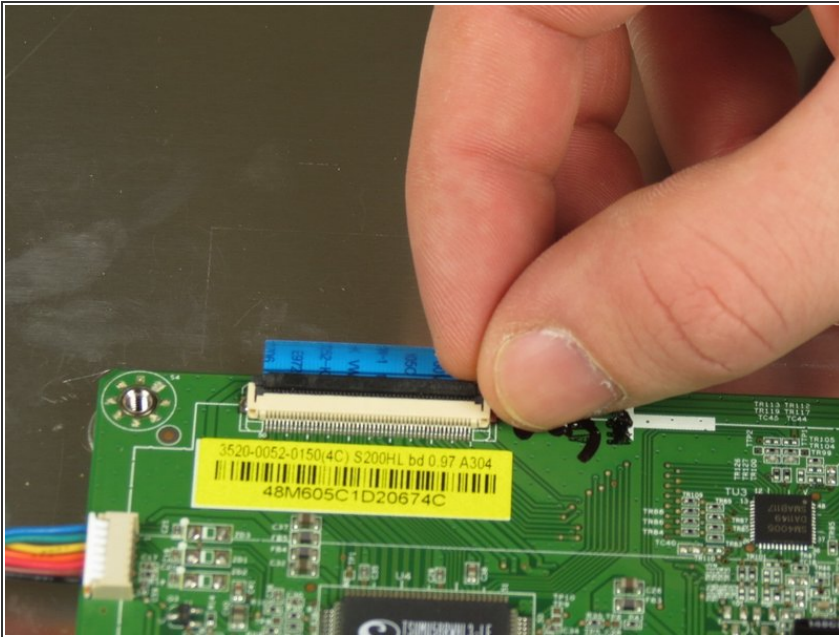
- i** The following steps give instructions for removing the three connectors shown in the picture.

Step 8 — Removing the No Fuss Ribbon Cable Connector



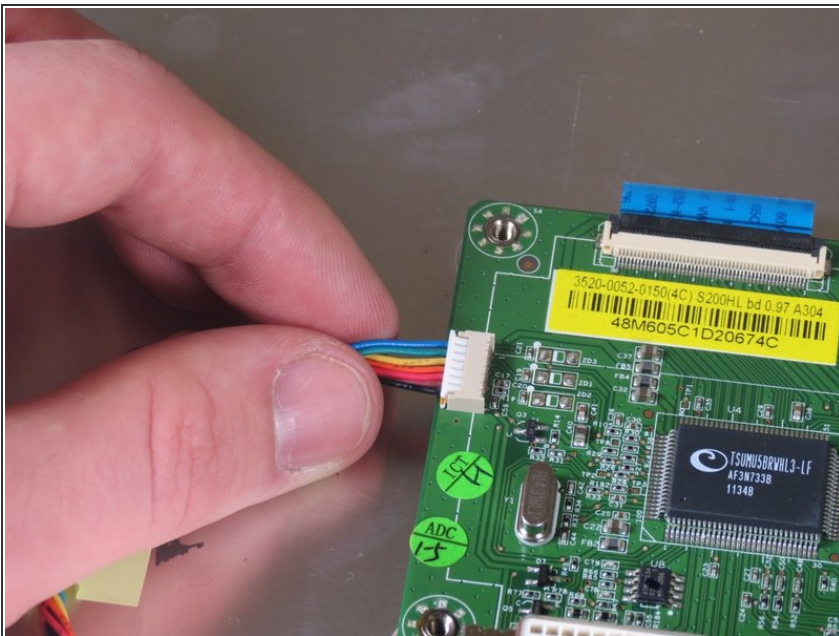
- Lift the black seal to release the small ribbon connector (the No Fuss Ribbon Cable connector) from the motherboard.
- i** The connector will be released from the motherboard immediately.

Step 9 — Removing the ZIF Connectors



- Lift the black seal to release the large ribbon connector (the ZIF connector).
- ❗ The connector will be released from the motherboard immediately.

Step 10 — Removing the Bundled Cable Connector



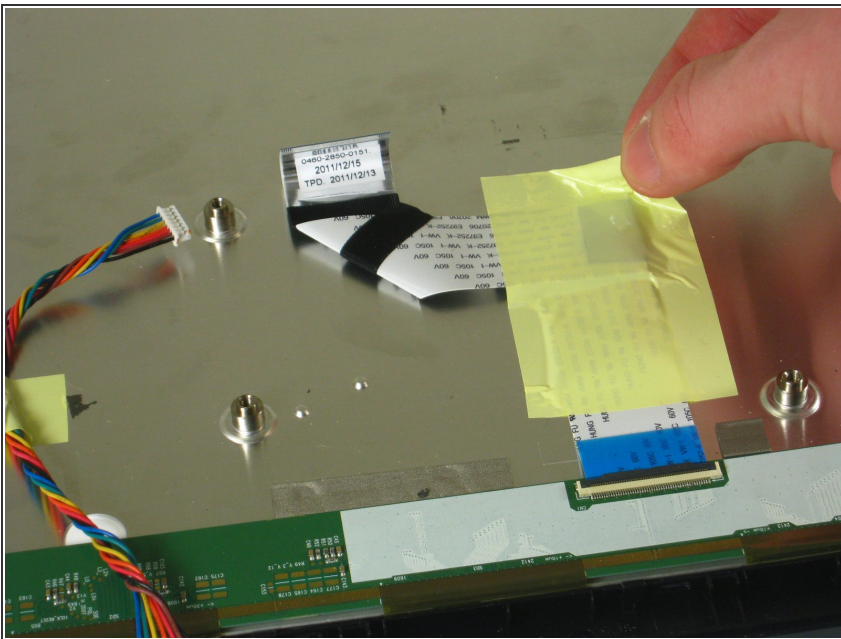
- Pull the bundled cable connector gently away from motherboard.

Step 11 — Removing the Motherboard



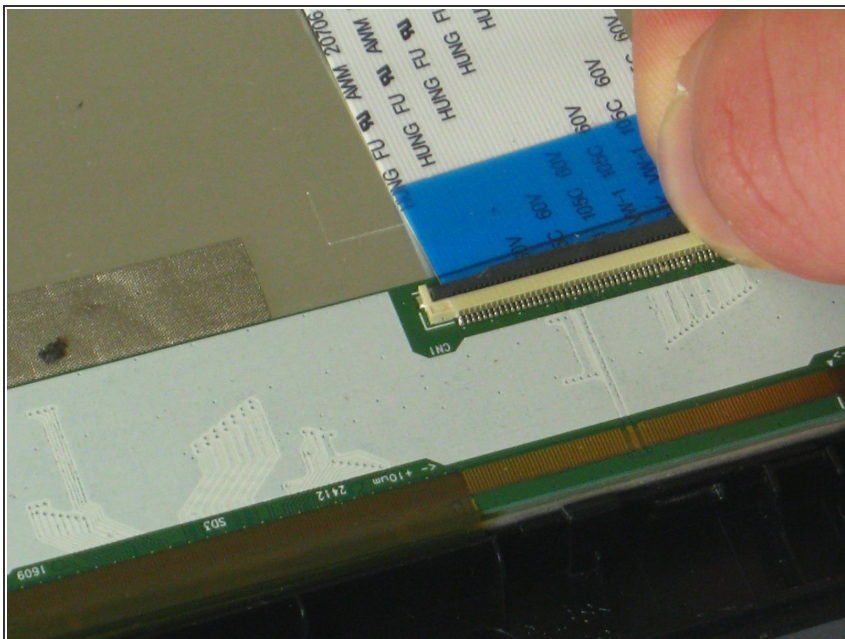
- Gently lift the motherboard to remove it from the monitor.

Step 12 — Removing the ZIF Connector from the Screen



- Slowly pull the tape off of the ZIF connector and the monitor.

Step 13



- Lift the black seal to release the ZIF connector.
- ⓘ The connector will be released from the monitor immediately.

To reassemble your device, follow these instructions in reverse order.