



# Acer Travelmate 220 Disc Drive Replacement

Replacement of optical drive.

Written By: Justin



## INTRODUCTION

How to replace optical drive for Acer Travelmate 220 due to malfunctioning disk drive. Symptoms are drive does not read disks, does not respond to inserted disks, or if there are multiple disk drive errors.



### TOOLS:

- [Phillips #00 Screwdriver](#) (1)
-

## Step 1 — Disc Drive



- Flip your computer over so the bottom case is facing you.

## Step 2



- Locate sliding unlock button near the AC power input.

### Step 3



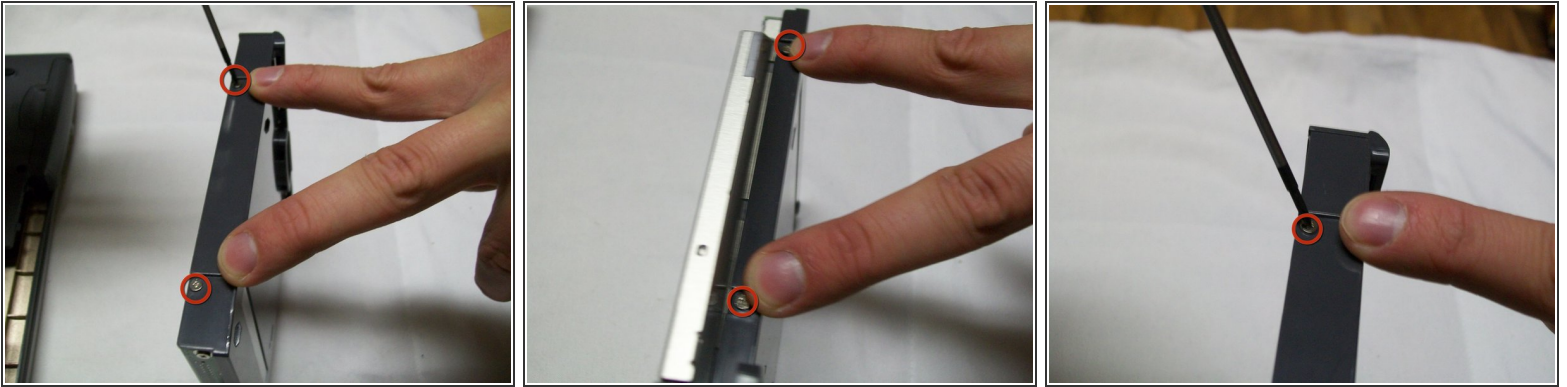
- Slide button in the direction of unlock and hold.

### Step 4



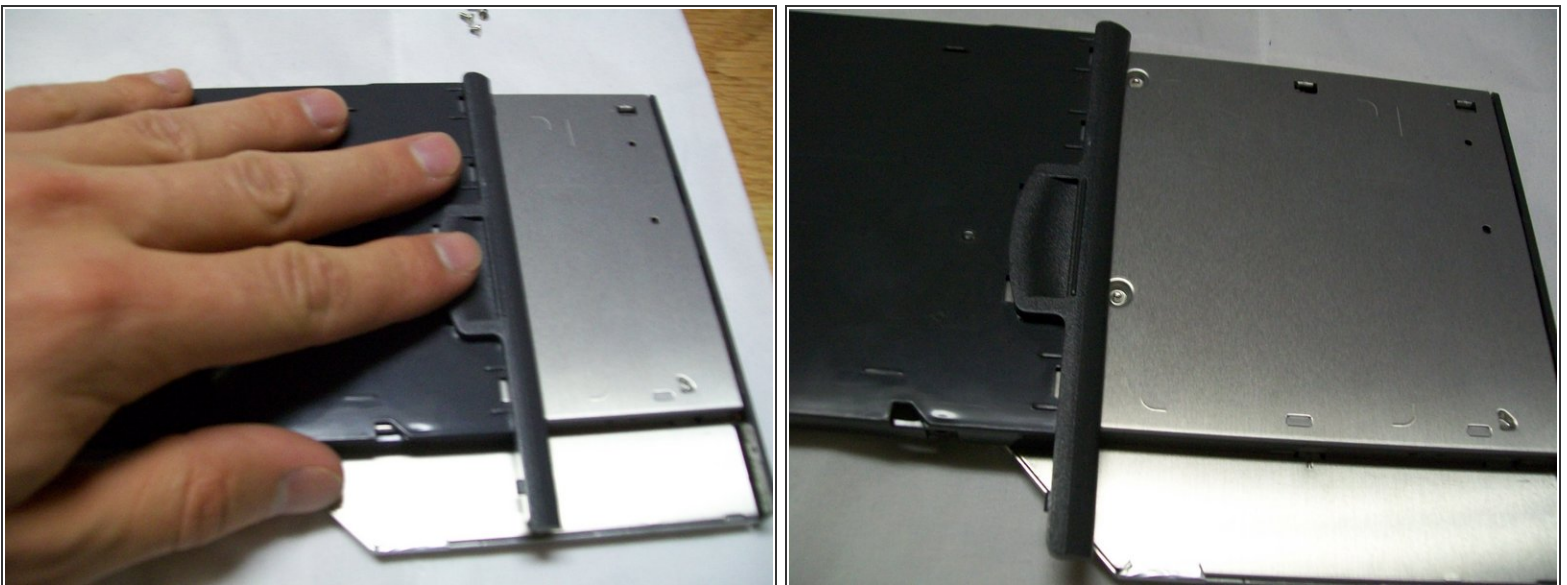
- Gently pull the disk drive out.

## Step 5



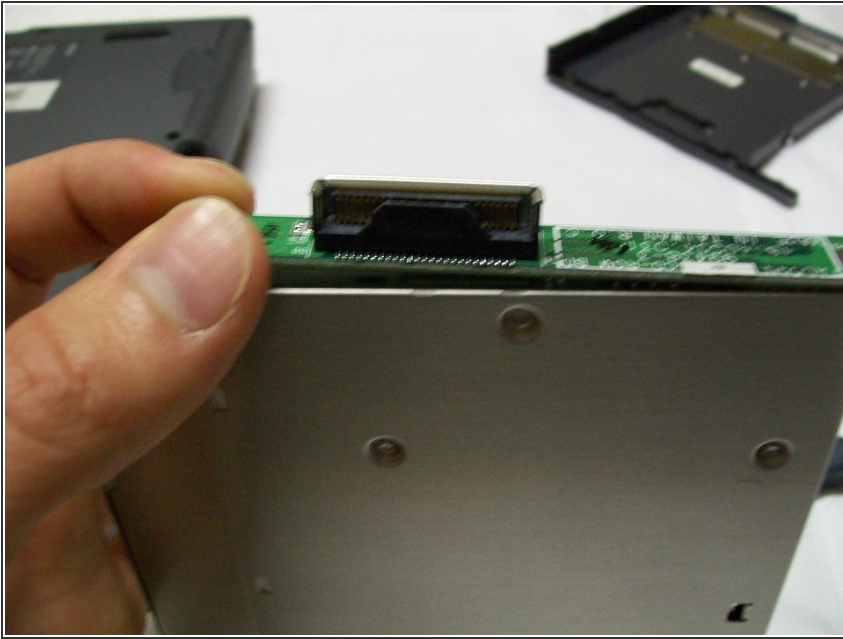
- With a small Phillips drive screwdriver, remove the 4 screws in sides of black plastic.

## Step 6



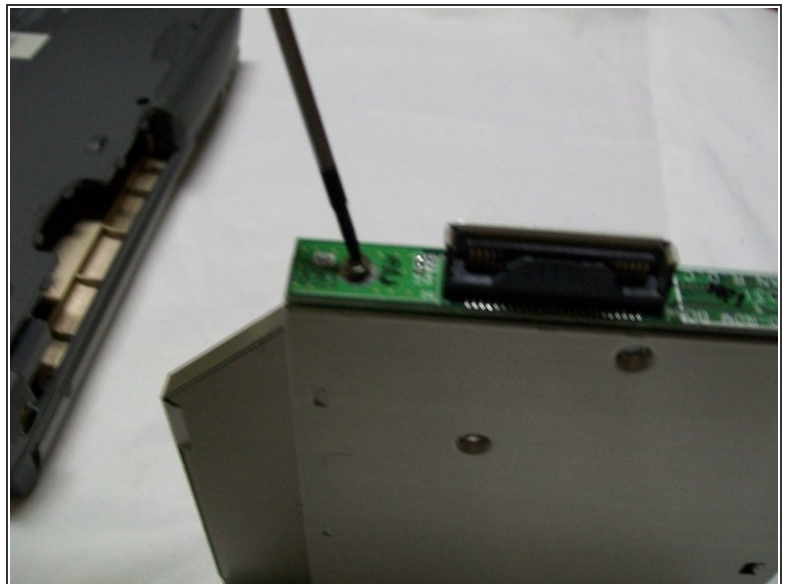
- Pull off black plastic that covers the metal.

## Step 7



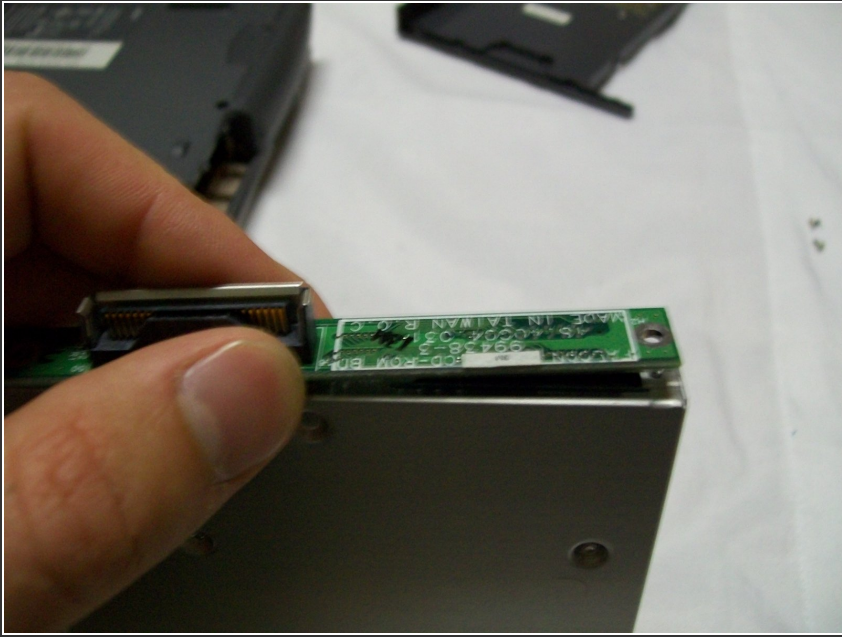
- Locate green chip on back of drive.

## Step 8



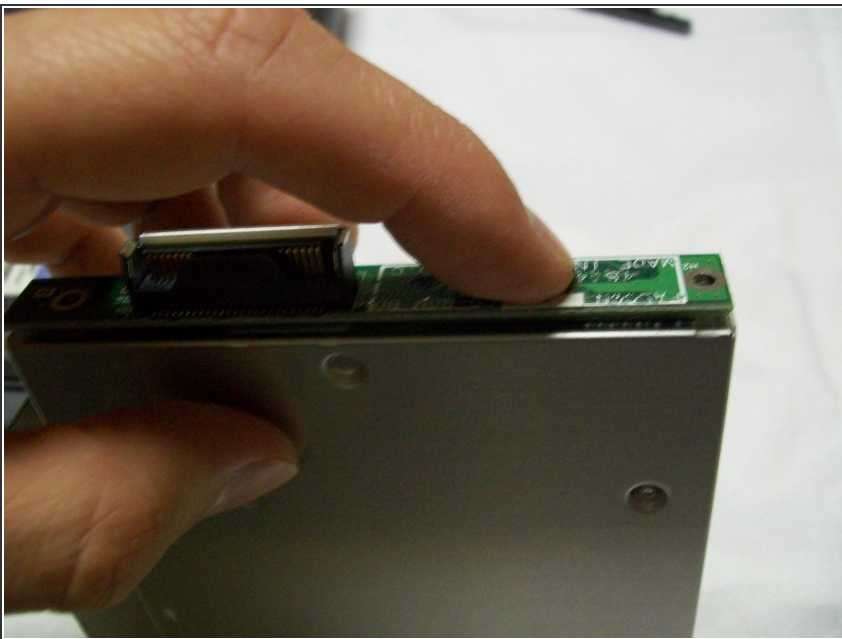
- Remove the 2 screws securing the green chip.

## Step 9



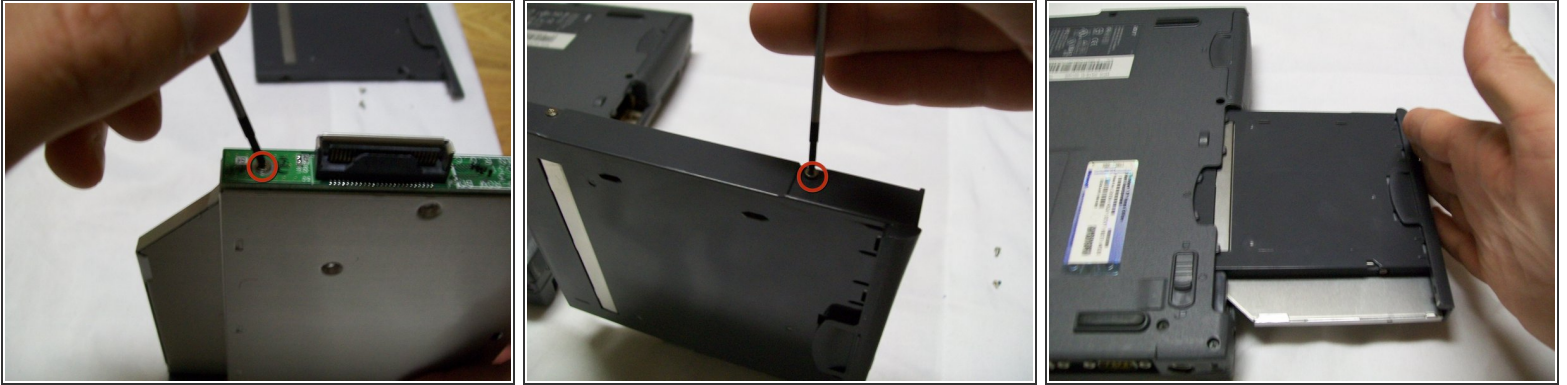
- Firmly pull off green chip.

## Step 10



- Insert green chip in new mechanism.

## Step 11



- To reassemble your device, follow these instructions in reverse order

To reassemble your device, follow these instructions in reverse order.