



# Acer Travelmate 220 RAM Replacement

Replacement of RAM chips

Written By: Kevin A



## INTRODUCTION

These are common symptoms requiring the replacement of the RAM chips in an Acer Travelmate 220 include:

1. The inability to turn your computer on.
2. Your computer randomly crashing/turning off.
3. Your computer randomly rebooting/turning on.
4. The inability to install new programs to your computer.



### TOOLS:

- [Phillips #00 Screwdriver](#) (1)
- [iFixit Opening Tools](#) (1)



### PARTS:

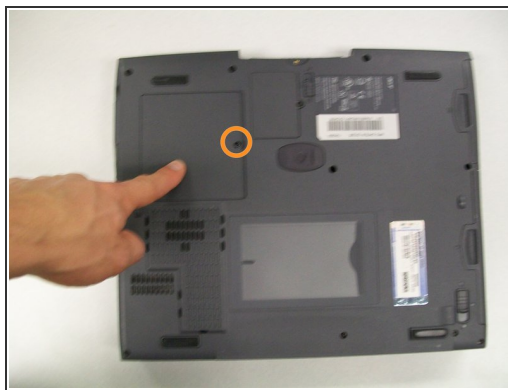
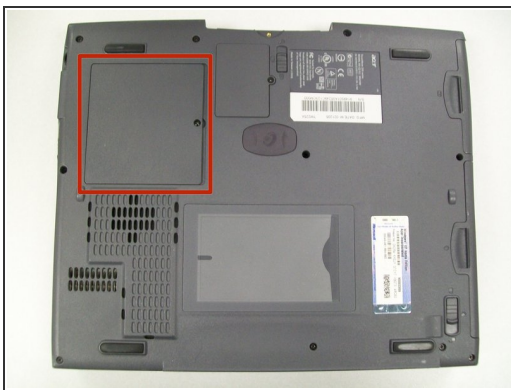
- [PC100 128 MB RAM Chip](#) (1)

## Step 1 — RAM Chip



- Place the computer with the bottom facing up.

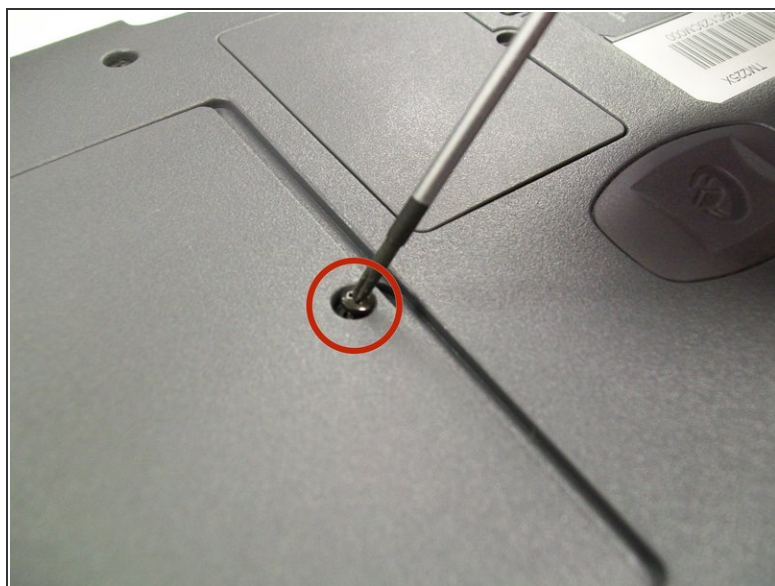
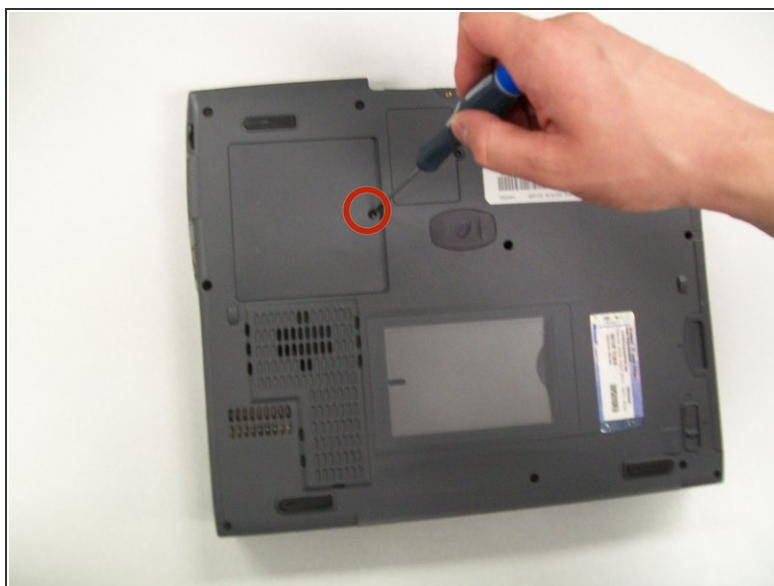
## Step 2



- Locate the larger cover panel in the upper left hand corner of the computer.
- Locate the Phillips screw holding the large cover panel in place.



### Step 3



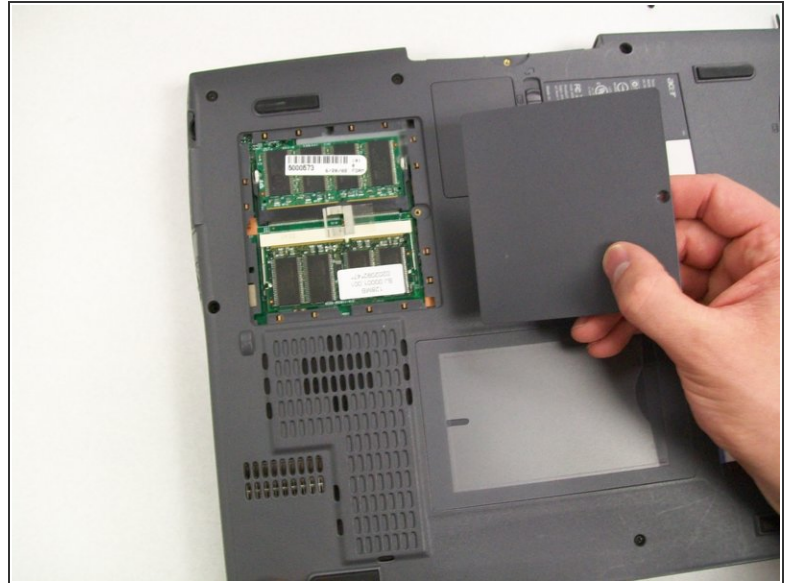
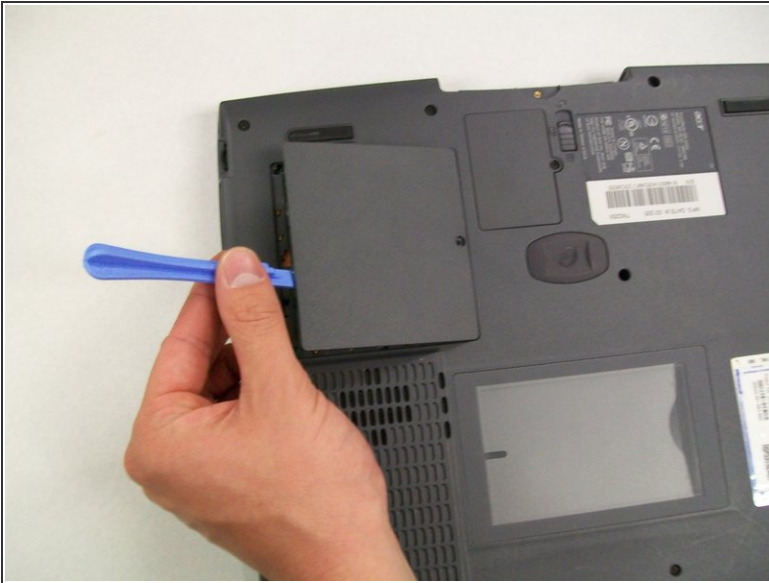
- Remove the located screw with the Phillips #00 screwdriver.

### Step 4



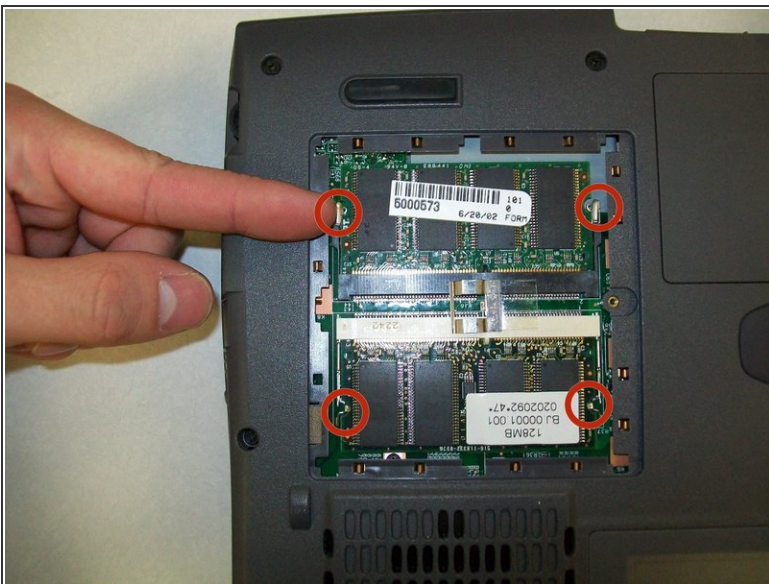
- Slide the large cover panel to the right, until you hear a click.

## Step 5



- Place the plastic opening tool in the gap created to the left of the large cover panel.
- Pry the cover panel up and remove it from the computer.

## Step 6



- Locate the white plastic levers on each side of the two RAM chips.



## Step 7



- Locate the first RAM chip.
- Push the plastic levers away from the first RAM chip.

## Step 8



- Lift the RAM chip from the compartment.
- Repeat steps 7 and 8 to replace the second RAM chip.

To reassemble your device, follow these instructions in reverse order.