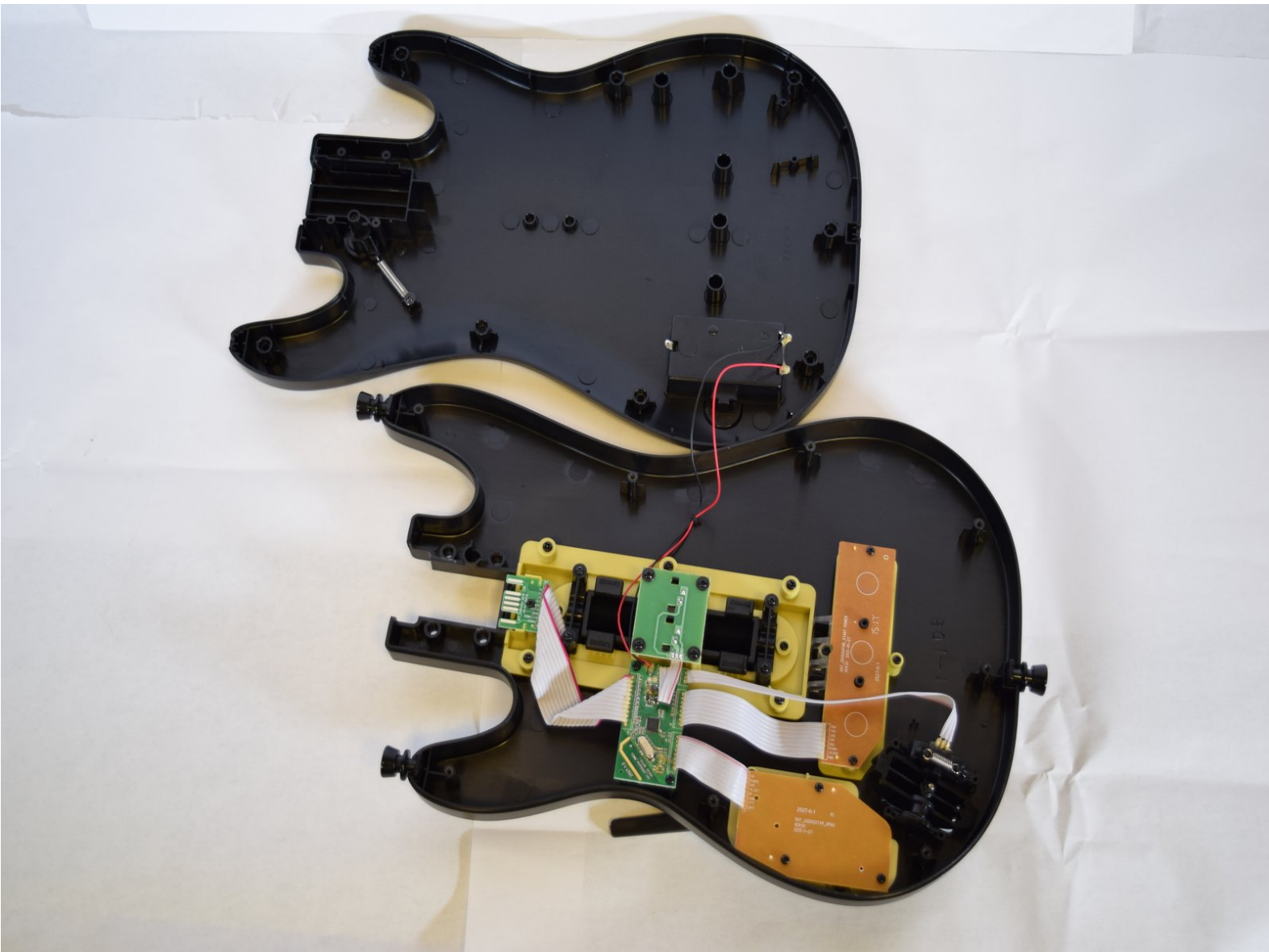




Activision Guitar Hero Live Guitar Controller Casing Replacement

These are the first steps for a Replacement, Disassembly, or Teardown, of the Activision Guitar Hero Live Guitar Controller.

Written By: Jeff Bennett

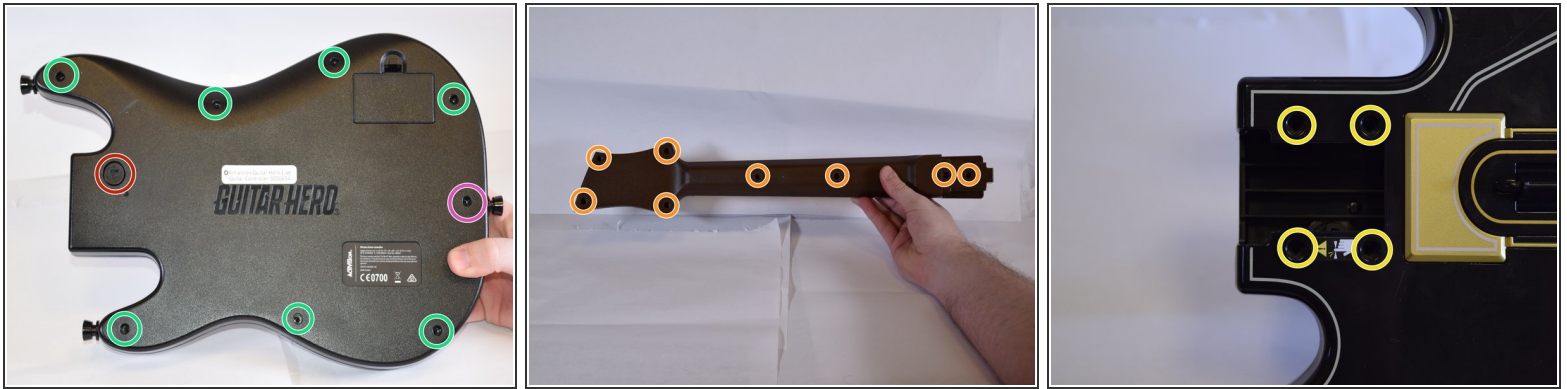




TOOLS:

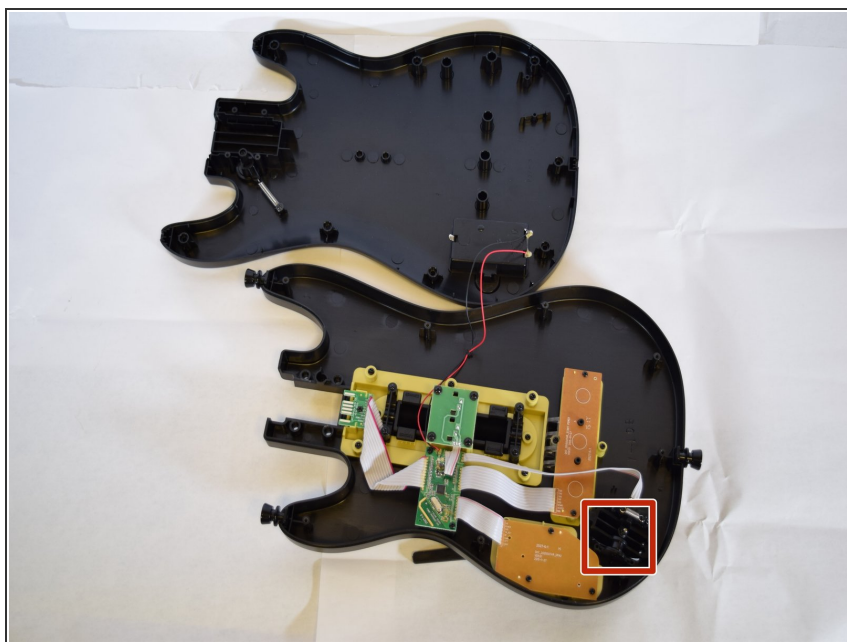
- [Phillips #00 Screwdriver](#) (1)
- [.25" Flathead Screwdriver](#) (1)

Step 1 — Casing



- The first thing we want to do is remove the neck from the body. This is necessary to access either the inside of the neck or the body.
 - The round tab with a triangle can be turned by inserting a .25" tip Flathead screwdriver and turning. Simultaneously, as the tab turns about a quarter circle, pull the neck and it should slide out with minimal force.
 - Once the neck has been separated from the body remove the eight screws from the back of the neck with a Phillips Head 0 screwdriver. All screws are 12 mm.
 - Next remove the four screws that were covered by the neck.
 - Finally, remove the eight screws from the back of the body.
 - This screw at the bottom of the body is a bit longer than the others.
 - With all the screws out, both the neck and the body shells should open with minimal force.
- ⚠ When separating the front and back half of the body do so carefully as the wiring from the battery pack to the components is fixed to each half with adhesive and can detach from any of the points if pulled to roughly.

Step 2



- These are the whammy bar components, we highly recommend removing these components before working on other areas of the body as the whammy bar protrudes making it difficult to rest on a flat surface.
- To remove the whammy bar, follow the steps included in the whammy bar replacement guide, found on our device.

To reassemble your device, follow these instructions in reverse order.