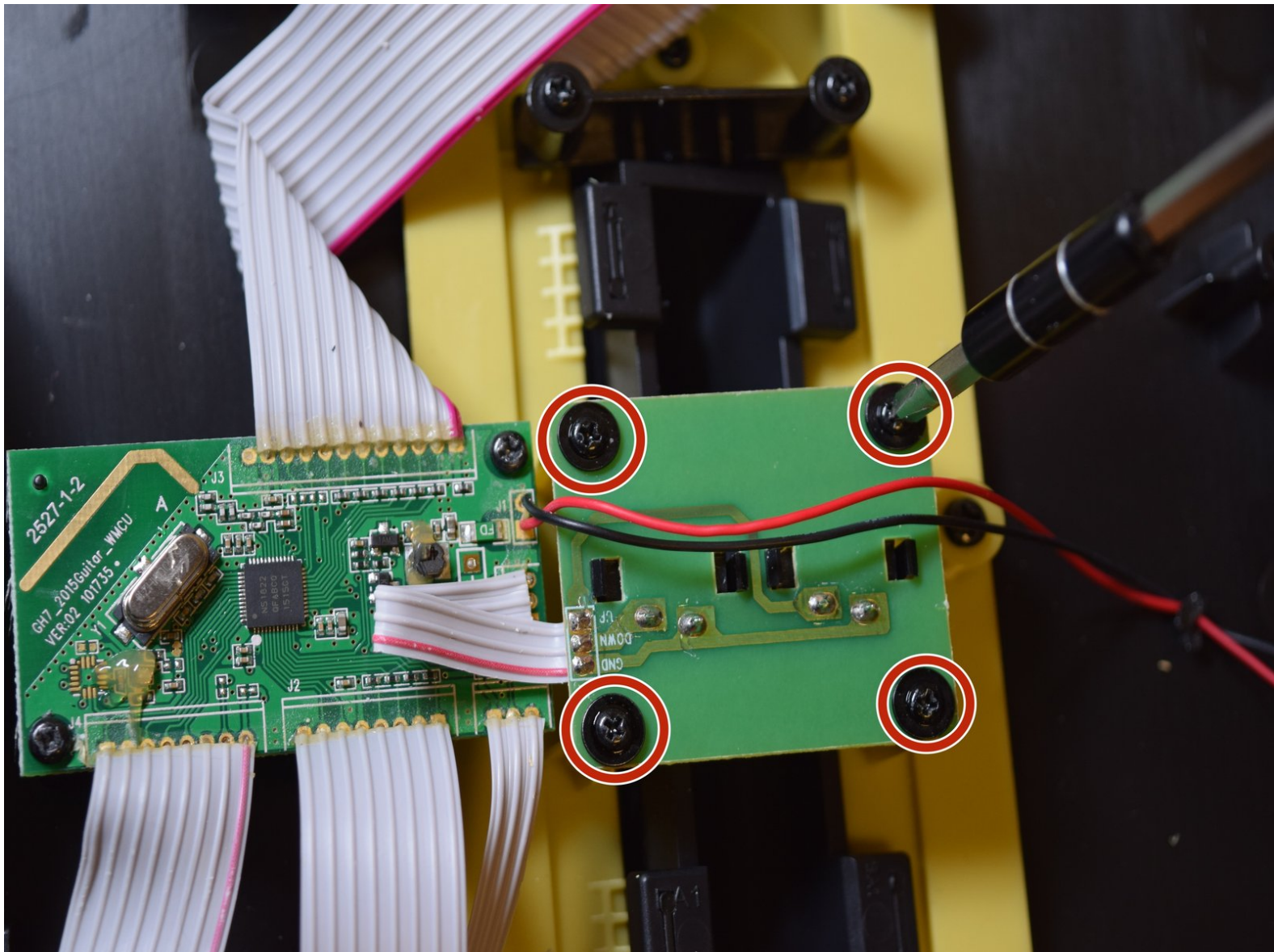




Activision Guitar Hero Live Guitar Controller Strum Bar Replacement

Replacing/removing Guitar Hero Live strum bar

Written By: Priscilla Dong



INTRODUCTION

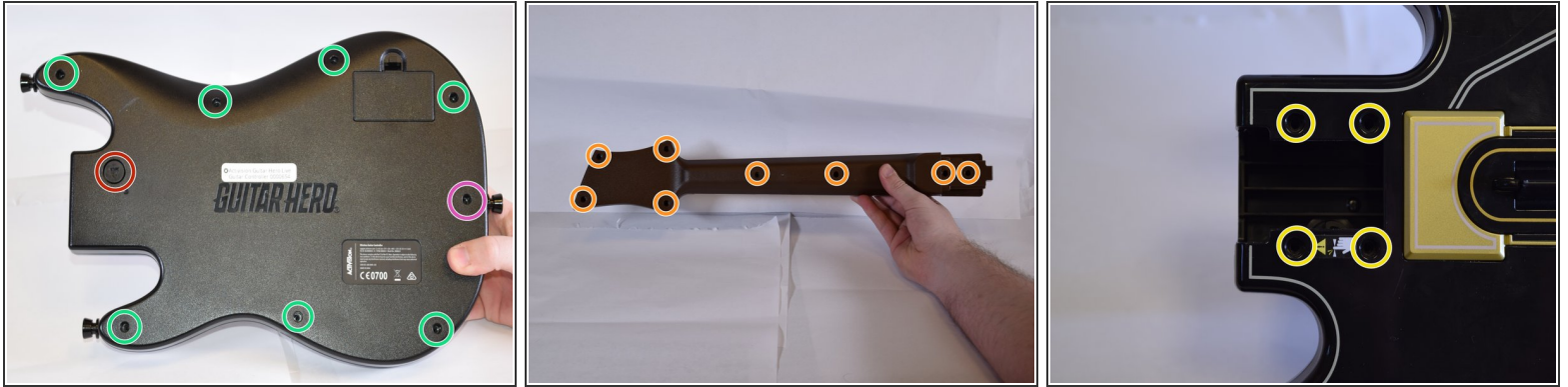
This guide will demonstrate how to replace or remove the strummer.



TOOLS:

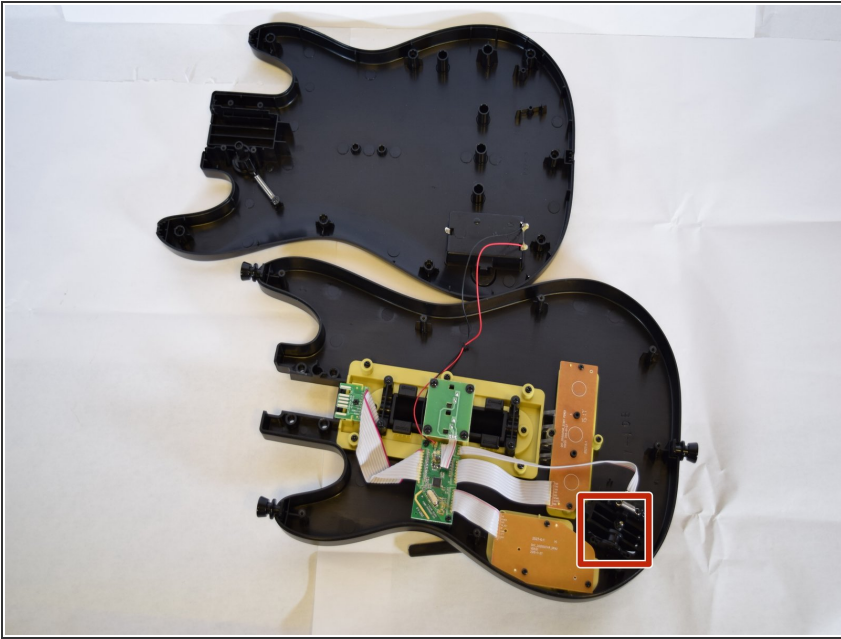
- [Phillips #00 Screwdriver](#) (1)
 - [Phillips #0 Screwdriver](#) (1)
-

Step 1 — Casing



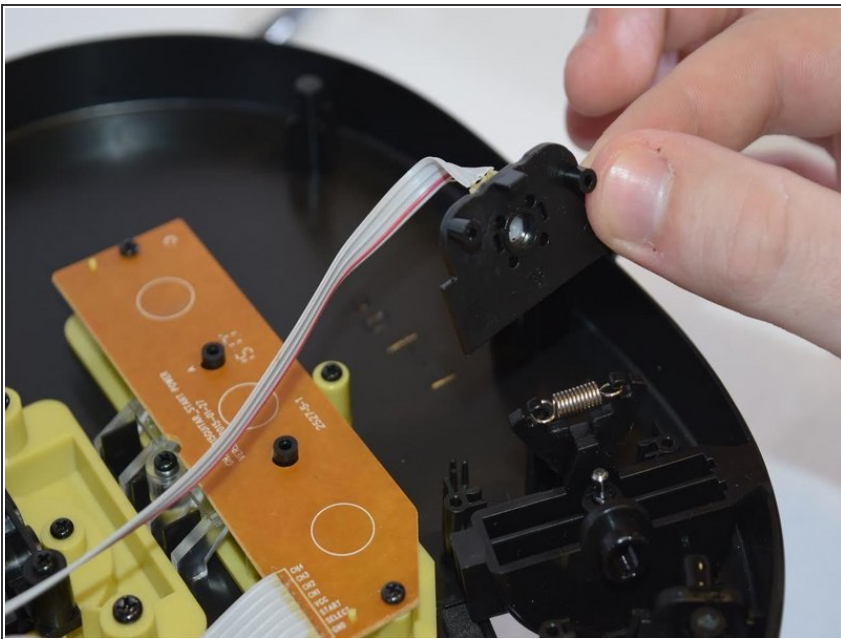
- The first thing we want to do is remove the neck from the body. This is necessary to access either the inside of the neck or the body.
 - The round tab with a triangle can be turned by inserting a .25" tip Flathead screwdriver and turning. Simultaneously, as the tab turns about a quarter circle, pull the neck and it should slide out with minimal force.
 - Once the neck has been separated from the body remove the eight screws from the back of the neck with a Phillips Head 0 screwdriver. All screws are 12 mm.
 - Next remove the four screws that were covered by the neck.
 - Finally, remove the eight screws from the back of the body.
 - This screw at the bottom of the body is a bit longer than the others.
 - With all the screws out, both the neck and the body shells should open with minimal force.
- ⚠ When separating the front and back half of the body do so carefully as the wiring from the battery pack to the components is fixed to each half with adhesive and can detach from any of the points if pulled to roughly.

Step 2



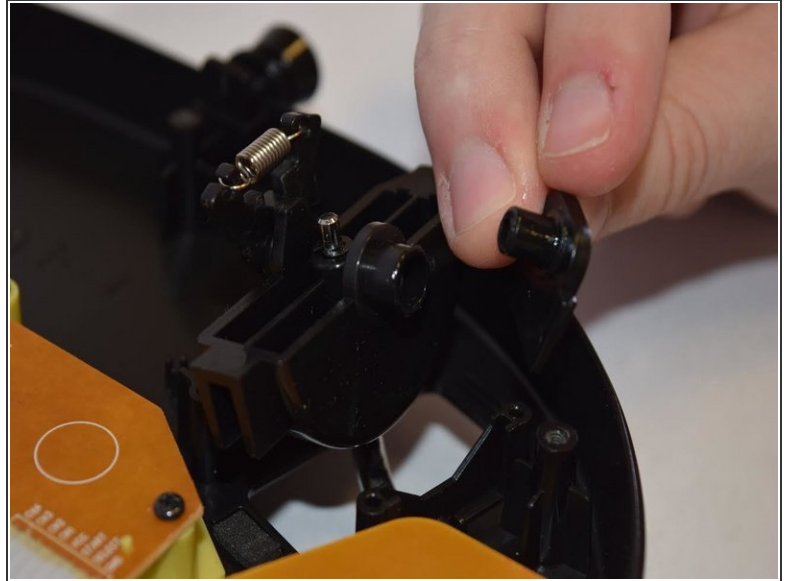
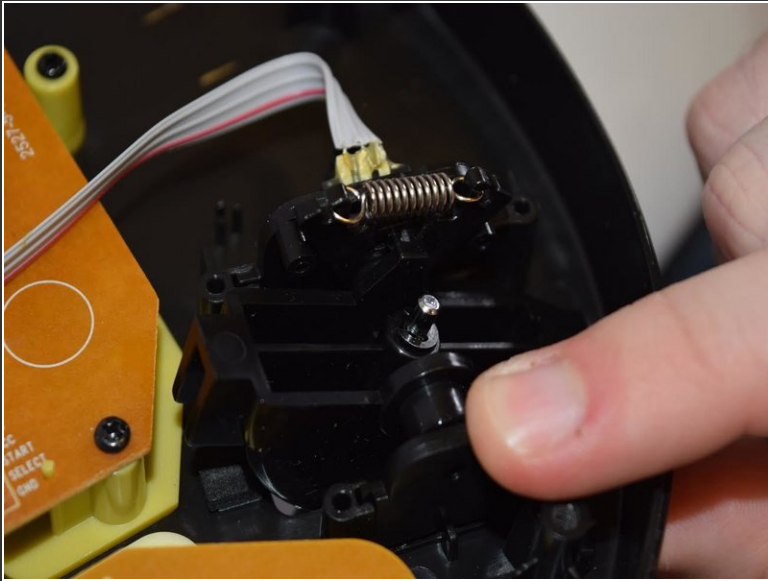
- These are the whammy bar components, we highly recommend removing these components before working on other areas of the body as the whammy bar protrudes making it difficult to rest on a flat surface.
- To remove the whammy bar, follow the steps included in the whammy bar replacement guide, found on our device.

Step 3 — Whammy Bar



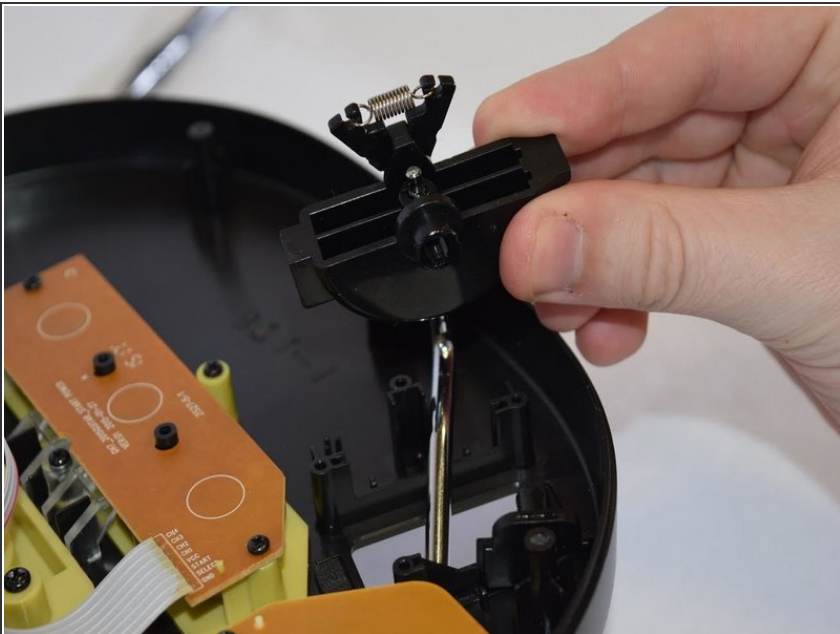
- After opening the controller carefully remove the piece of plastic connected to the strip of wire as shown in the photo.
- ⓘ After the piece of plastic which connects to the wire has been removed, set it aside where it won't be damaged.

Step 4



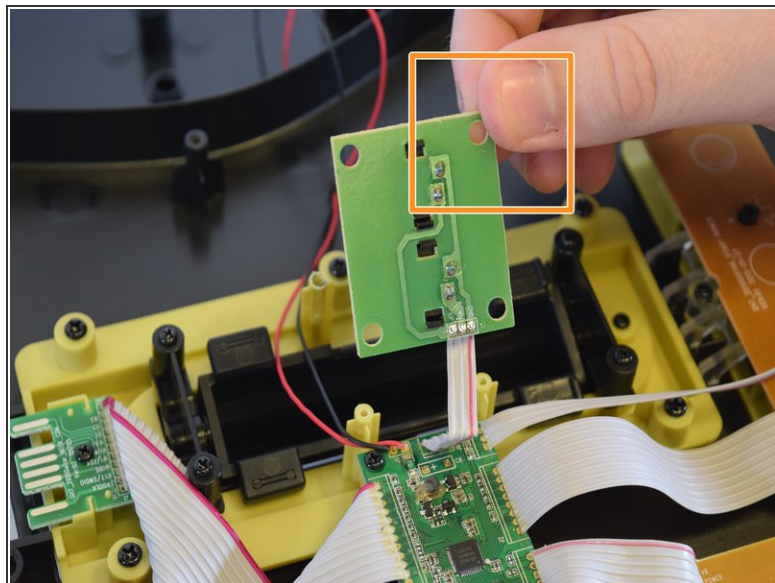
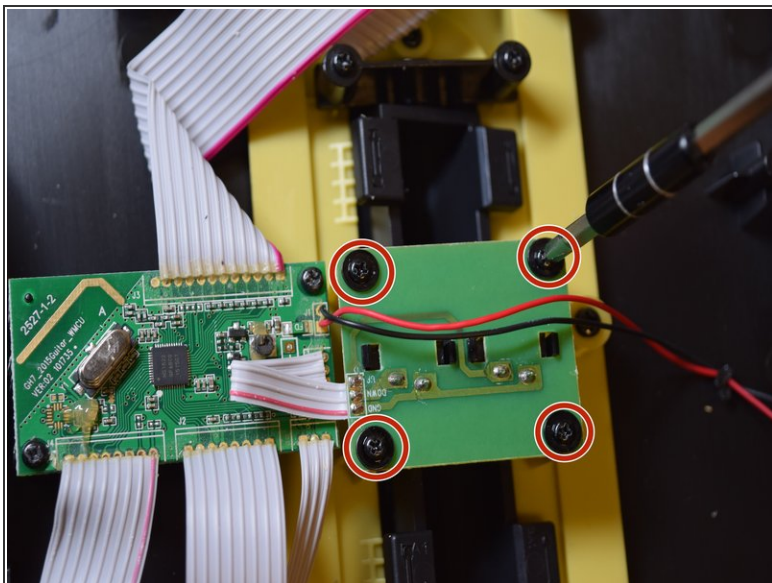
- Carefully remove the cylinder-shaped lid, by pulling outwards on the piece, it will slide out easily.
- ⓘ There should be a click when the piece has disconnected, then slowly slide part out and store safely.

Step 5



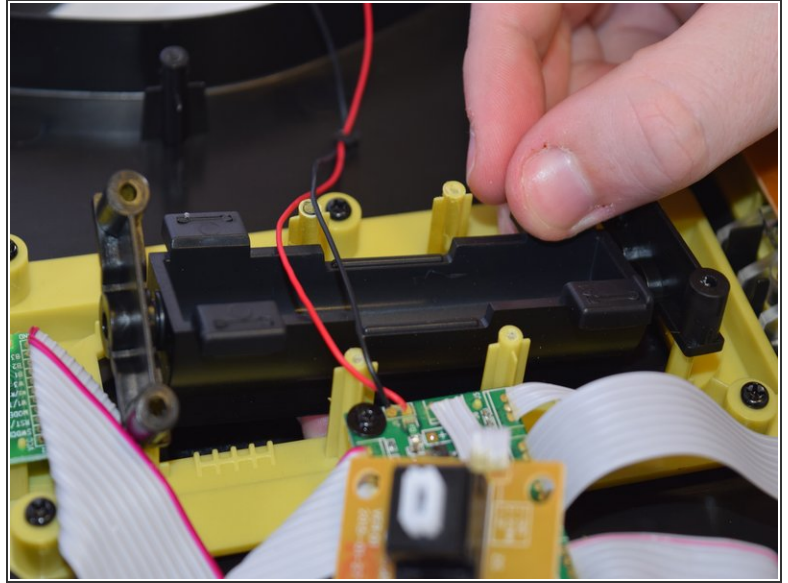
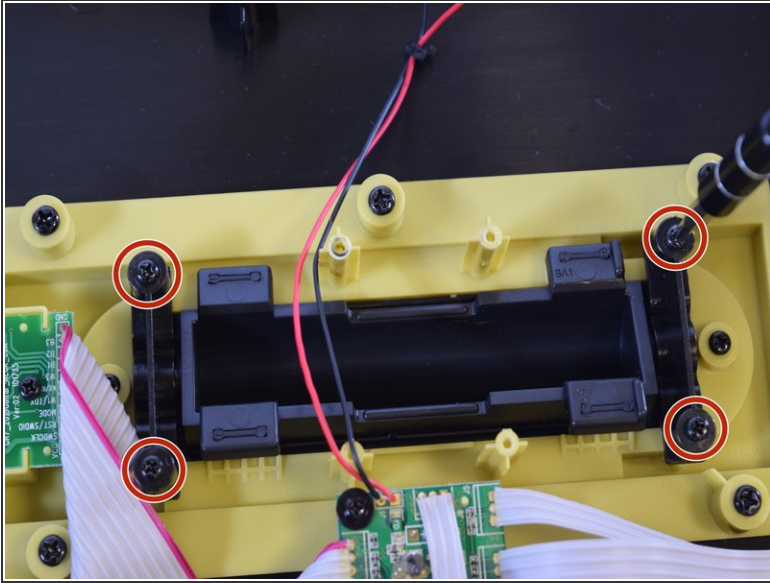
- Grab the Whammy Bar by the base of the component, and gently lift to remove the bar.
- ⓘ There won't be anything holding the Whammy Bar in place at this point, so if you feel any tension something may be caught on the Whammy Bar.

Step 6 — Strum Bar



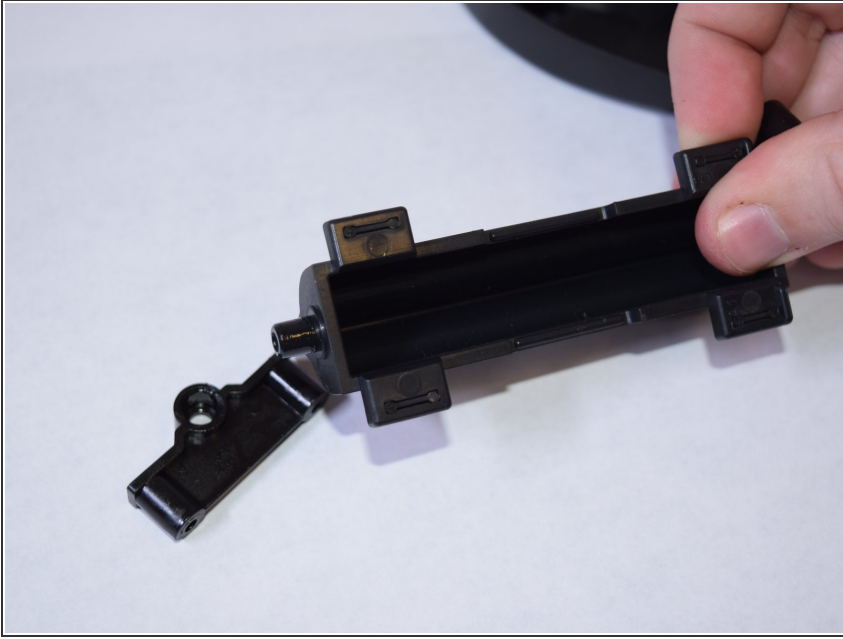
- Remove the 4 screws from the back of the strum bar panel with a Phillips Head 0 screwdriver. Each screw is 12 mm with a flared edge.
- Carefully lift the strum bar panel by the corners and set aside
- ⚠ Do not strain the panel in any way, the white wire wrap can be damaged with excessive force.

Step 7



- Locate the strum bar, (it's directly under the panel we just removed), there will be four 9mm screws holding it in place. Remove the screws with a Phillips Head 0 screwdriver.
 - Once the screws are removed, the strum bar can be easily removed by pulling it out of its pocket.
- ⚠ Be careful when removing the strum bar from its socket, the wires seen in the photo can be easily snagged and damaged.

Step 8



- Once the Strum Bar is removed, there is a rectangular piece on the end which can be removed to apply lubricant if needed.

To reassemble your device, follow these instructions in reverse order.