



AcuRite 02081M Observer Repair Battery,LCD Screen,Push Button Replacement

Written By: anhut51190



INTRODUCTION

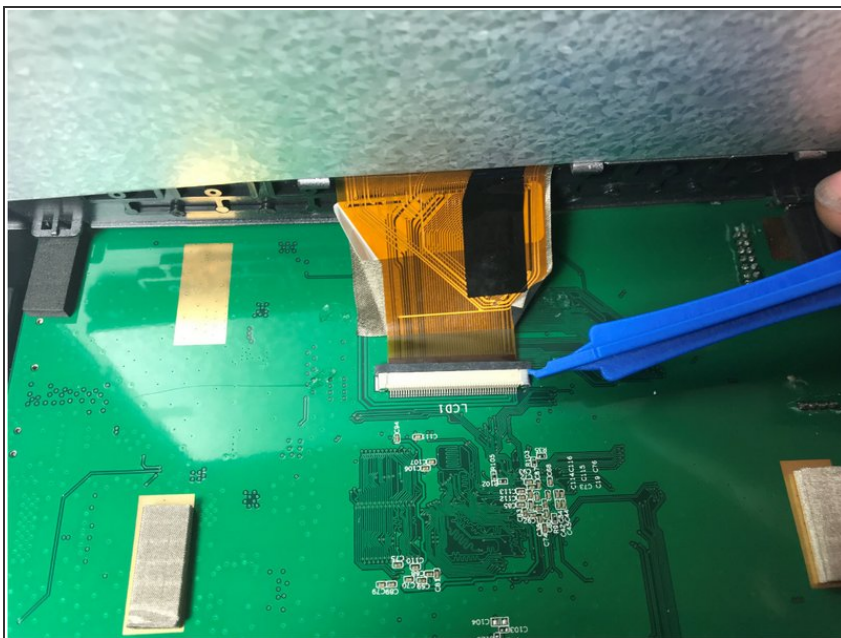
The console itself has dual levels of connectivity – the sensor uses RF (915 Mhz) while the console connects directly to your router (2.4 GHz).

Step 1 — Battery Replacement



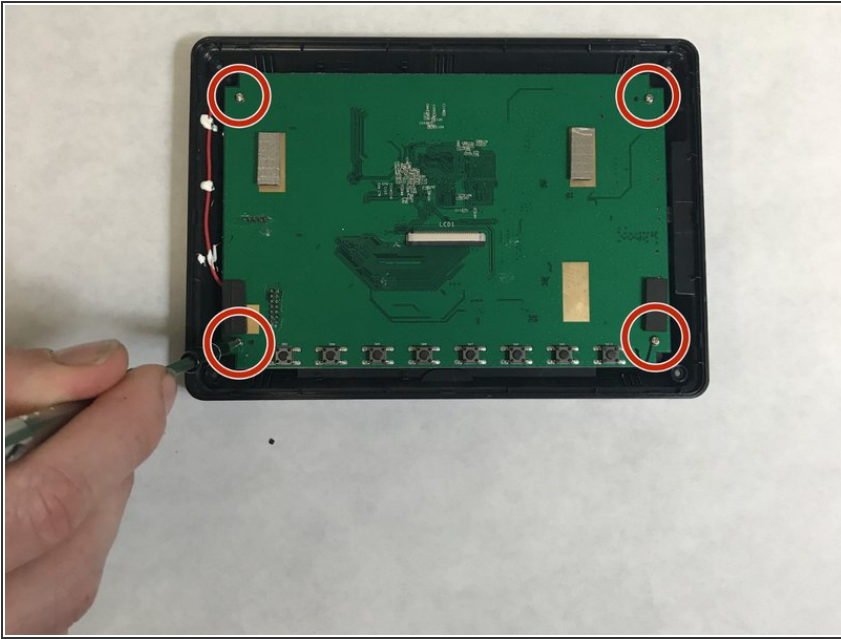
- First, unscrew the 4 M2x1.5-7 screws (7mm length) from the back of the device using a number 1 Phillips screwdriver.
- Pry the front silver panel away from the back black panel with a plastic opening tool.

Step 2 — Step 2



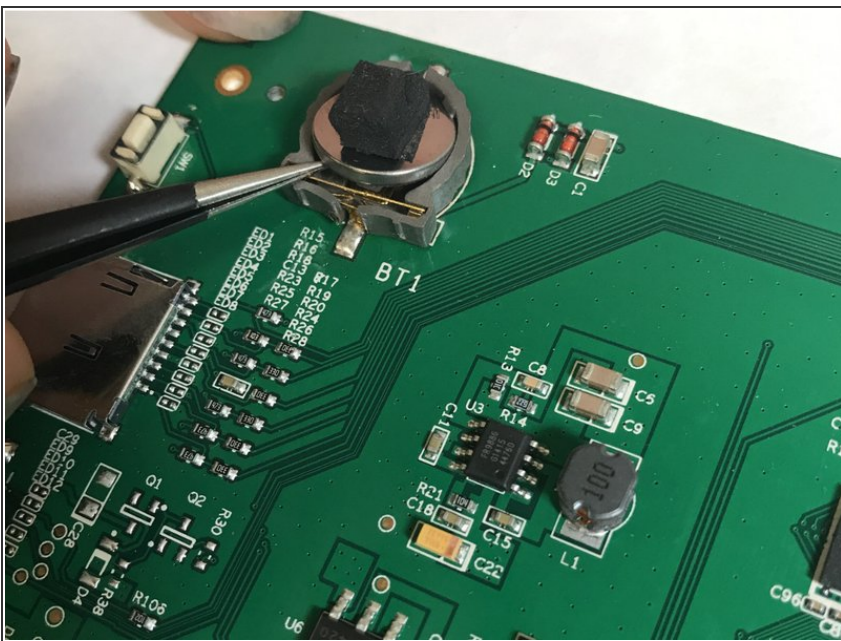
- Next, the ribbon cable needs to be carefully removed from the back of the LCD screen.
- Use a plastic opening tool to press the black bar towards the ribbon and away from the white bar gently. This will release the ribbon.

Step 3 — step 3



- Remove the 4 M2x1.5-7 screws (7mm length) from the green PCB board.
- This will result in two pieces, the back black cover and the PCB board.

Step 4



- The battery can then be popped out using precision tweezers and replaced with a new one.

To reassemble your device, follow these instructions in reverse order.