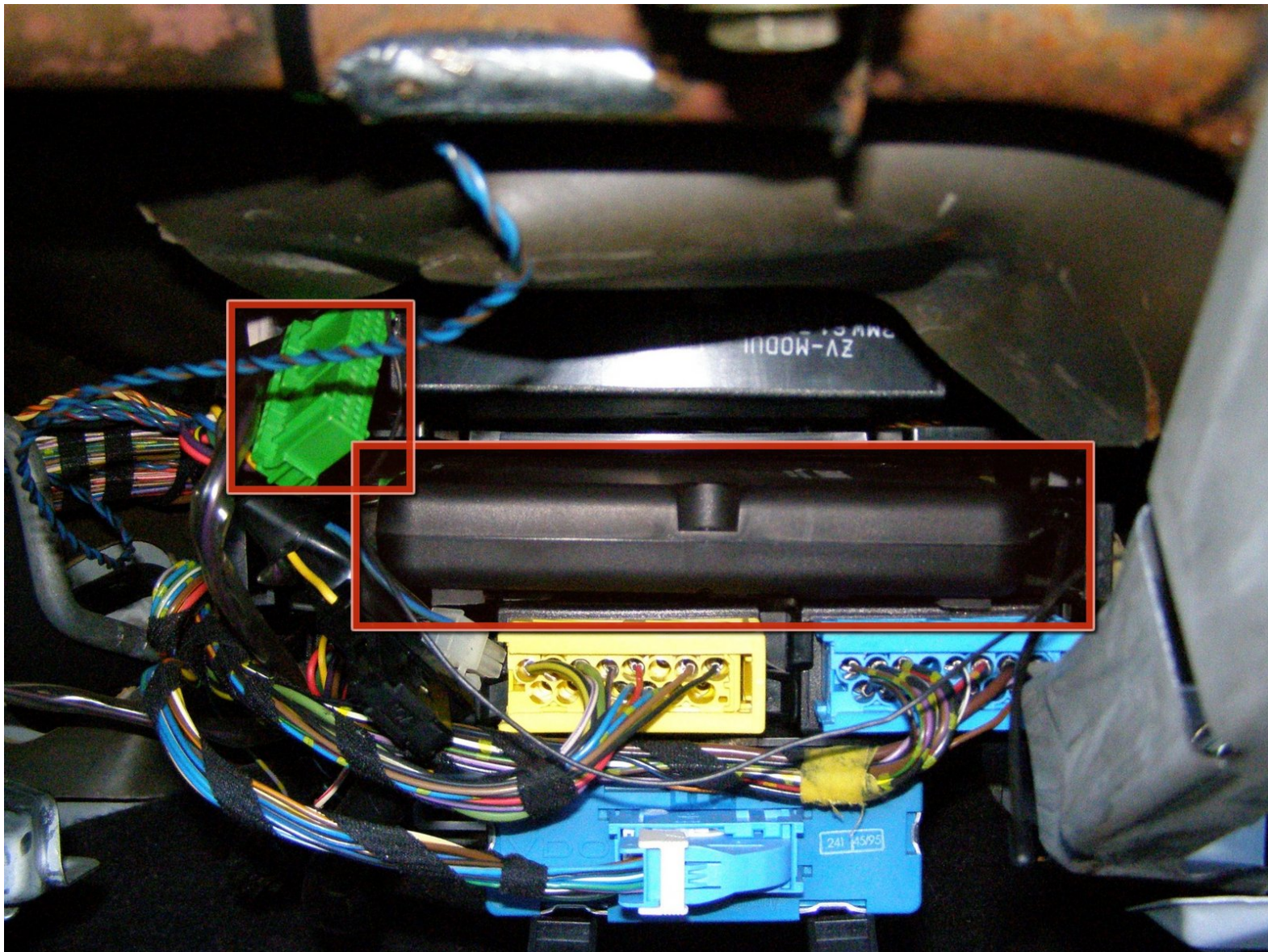




Adjusting the alarm glass breakage microphone sensitivity

My alarm was going off intermittantly and always gave the 3 blink code for broken window. I kind of knew where the alarm unit was but would have loved to have had some illustrated guidance.

Written By: mpeeples



INTRODUCTION

The alarm unit is located behind the glove box. Once the glovebox is out of the way, you can remove the black plastic alarm unit, open it and change the dip switch for a less sensitive setting.



TOOLS:

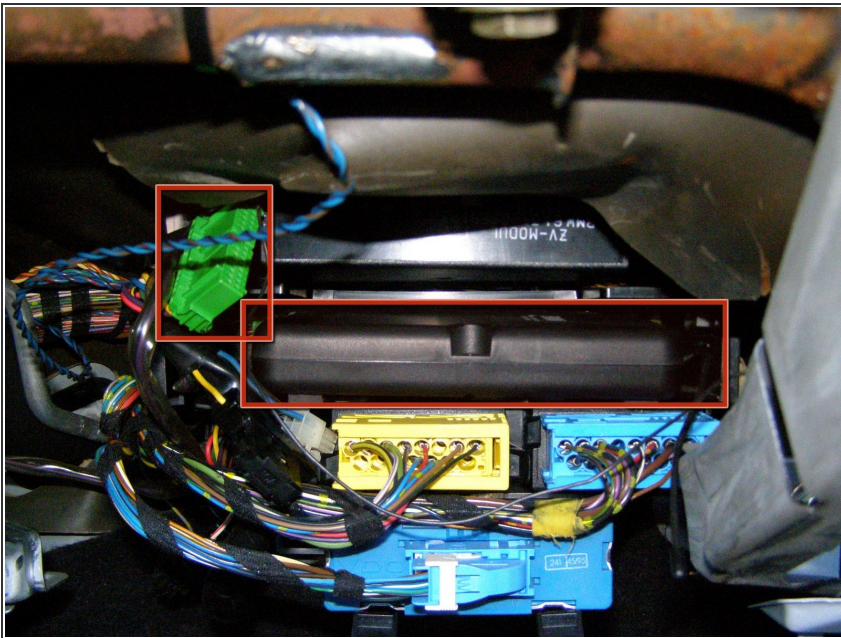
- [Phillips #2 Screwdriver](#) (1)
-

Step 1 — Adjusting the alarm glass breakage microphone sensitivity



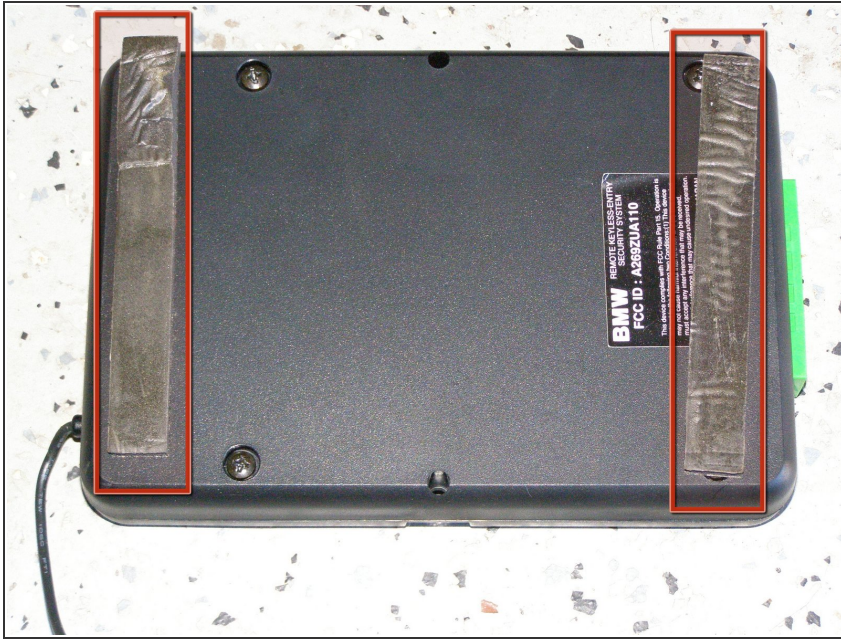
- The first thing you have to do is remove the glove box. I found a [good "how-to" for that at this site](#).

Step 2



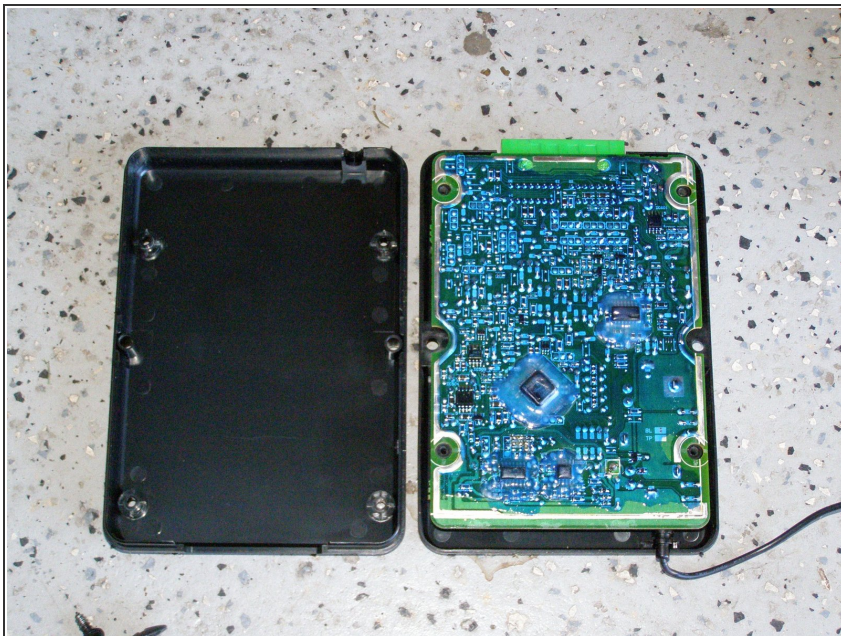
- Once the glove box is out of the way, it's easy to spot the alarm unit. The green connector will be plugged into it. I had already unplugged it when I took this picture.

Step 3



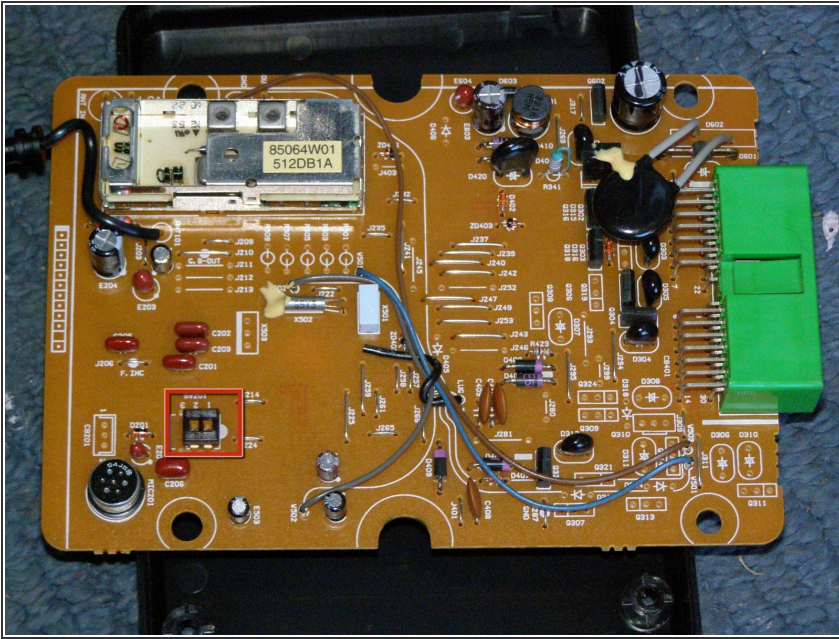
- It may be stubborn to get out because it is stuck down with double stick foam pads.

Step 4



- Remove the 4 screws (may be under the foam strips). This is the bottom of the circuit board.

Step 5



- Turn the board over and locate the 2 position dip switch.
- This dip switch adjusts the glass breakage microphone sensitivity
- Sensitivity settings:
 - 1 off & 2 off = high
 - 1 on & 2 off = mid (factory setting)
 - 1 off & 2 on = low
 - 1 on & 2 on = super low

To reassemble your device, follow these instructions in reverse order.