



# Aether Cone Speaker Disassembly

taking apart the Aether Cone wifi/bluetooth speaker

Written By: Nick Charlton



---

# INTRODUCTION

Just taking apart my Aether Cone!



## TOOLS:

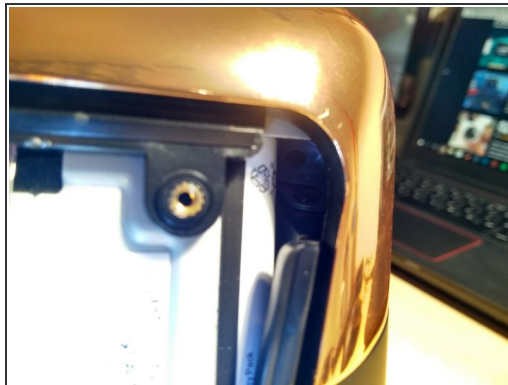
- [3mm Hex Key \(or Bit\)](#) (1)
  - [Spudger](#) (1)
  - [Phillips #0 Screwdriver](#) (1)
-

## Step 1 — Remove the Rubber Foot



- It is held on with some double sided adhesive tape, just peel it back carefully from a corner
- Then remove all the screws shown in the picture

## Step 2 — Remove frame screws and PCB



- Next remove the small circuit board on the end of the silver ribbon cable, it is held on with some more double sided adhesive
- Then remove the two allen head bolts hidden inside the case that hold the outer casing to the mid frame.

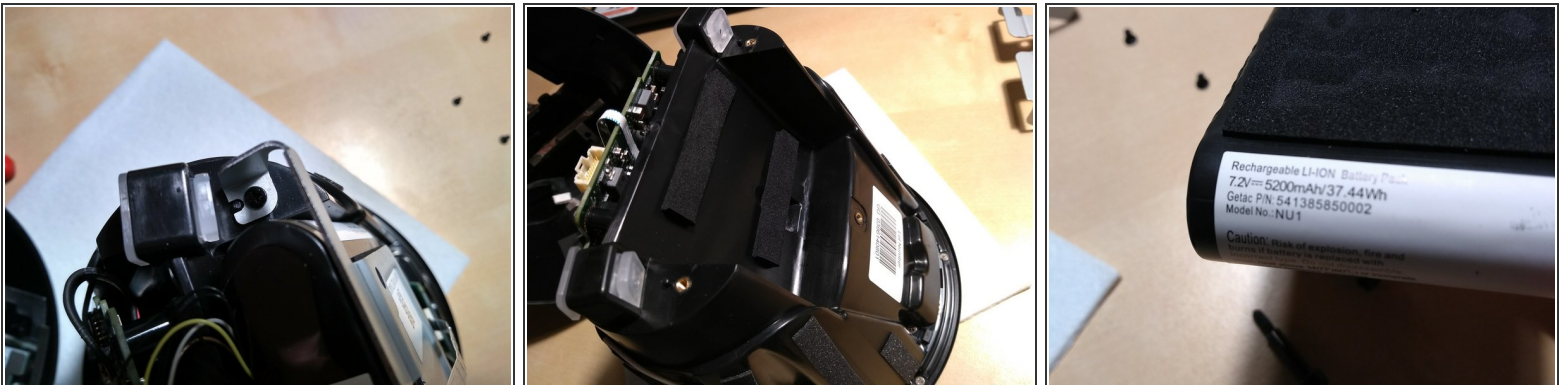


### Step 3 — remove case form midframe



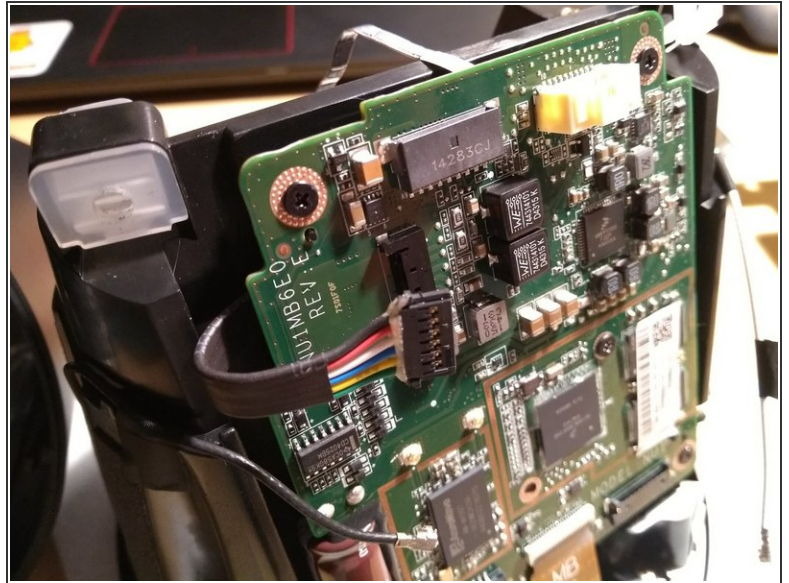
- Remove the ribbon cable and the connector holding the case to the mid frame

### Step 4 — remove battery support screws



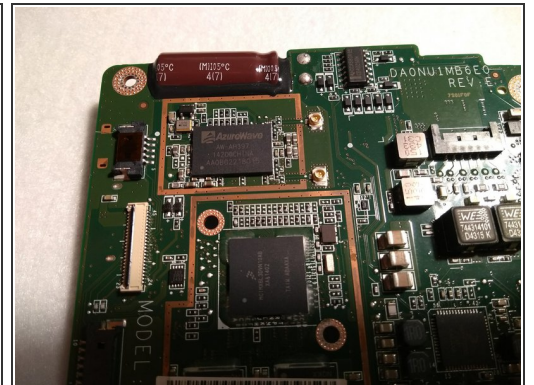
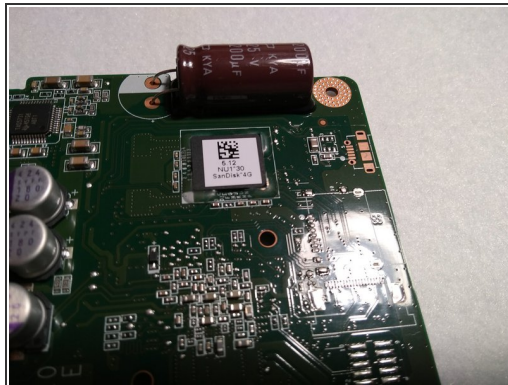
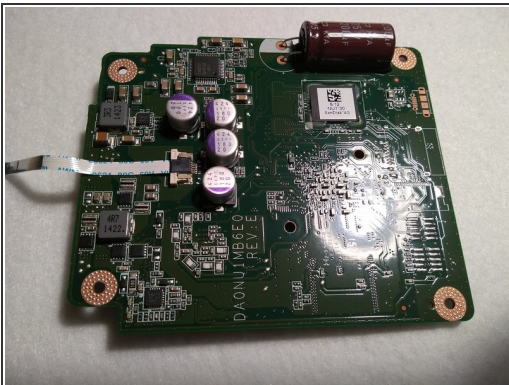
- undo the screws that hold the metal bracket in place and then disconnect the battery.
- The battery can then be gently pulled off the mid frame as it is held on by double sided adhesive foam tape.
- The battery is a 7.2v 5200mah battery consisting of 4 18650 cells.

## Step 5 — Disconnect cables



- Remove the connectors plugged into the main circuit board

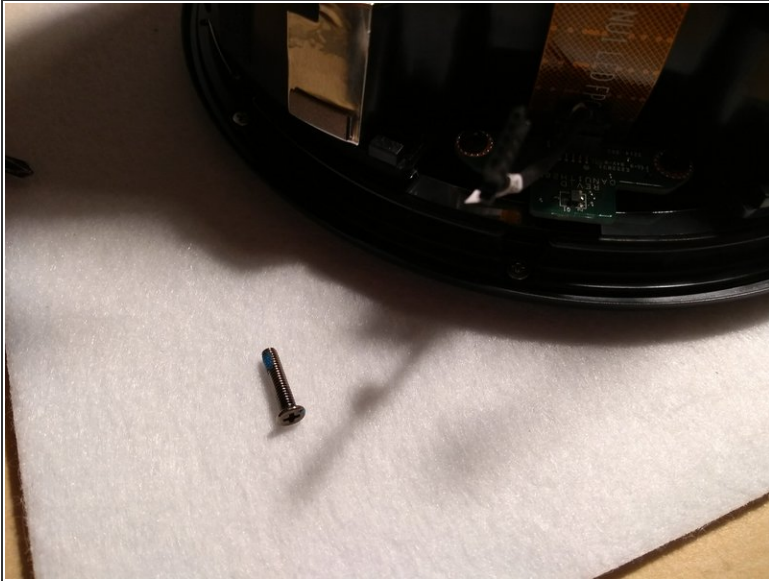
## Step 6 — Remove PCB



- remove the screws and the main circuit board can be taken off the mid frame.
- Hopefully the photos can help with identifying the chips



## Step 7 — Remove mid frame screws



- remove all the long screws around the mid frame
- The midframe can then be lifted off

## Step 8 — Remove the mid frame



- this then reveals the two tweeters and the 3 inch driver which provides the excellent sound quality.

To reassemble your device, follow these instructions in reverse order.