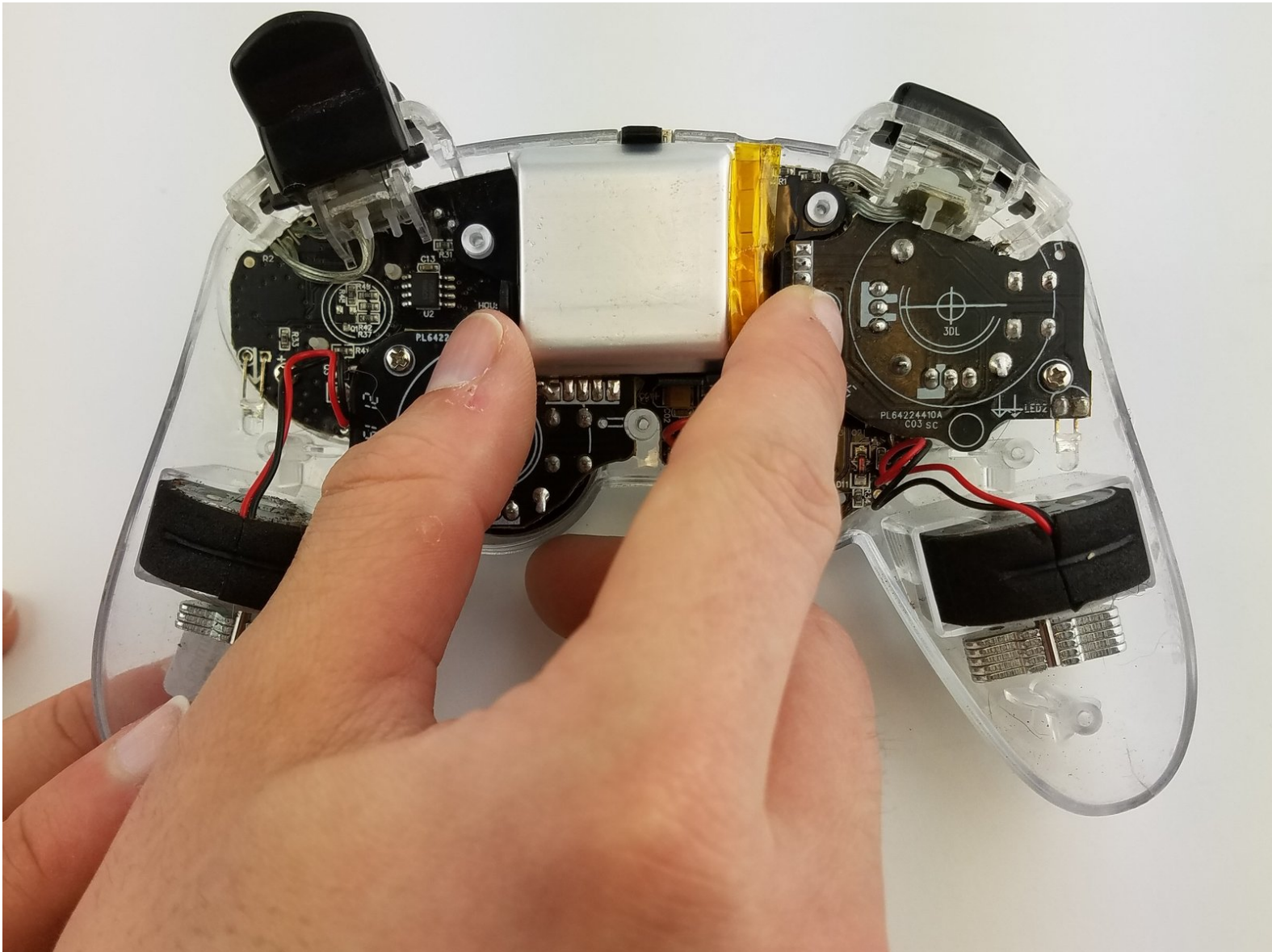




# Afterglow Wireless PS3 Controller Battery Replacement

This guide will show the steps in replacing the battery in a PS3 Wireless Afterglow Controller.

Written By: Aj Coello



## INTRODUCTION

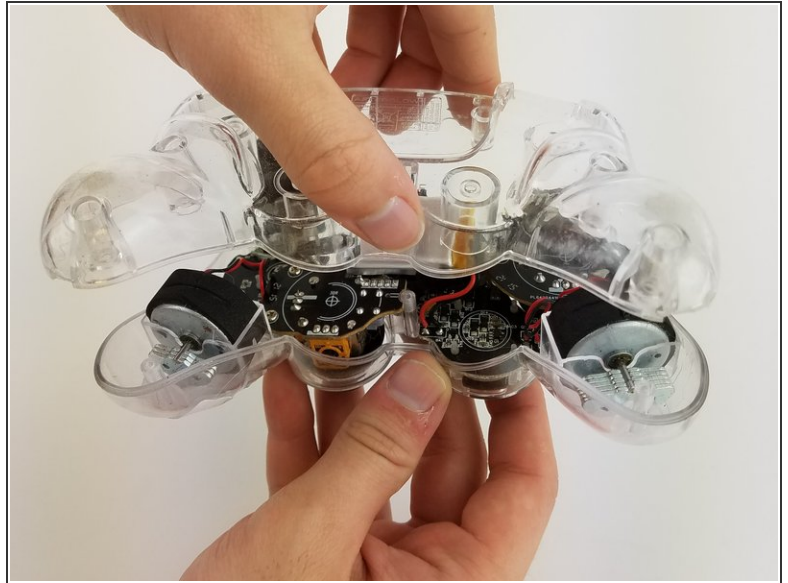
Replacing the battery in a PS3 Wireless Afterglow Controller requires the removal of the back plate and then the soldering of the battery wires onto the motherboard.



### TOOLS:

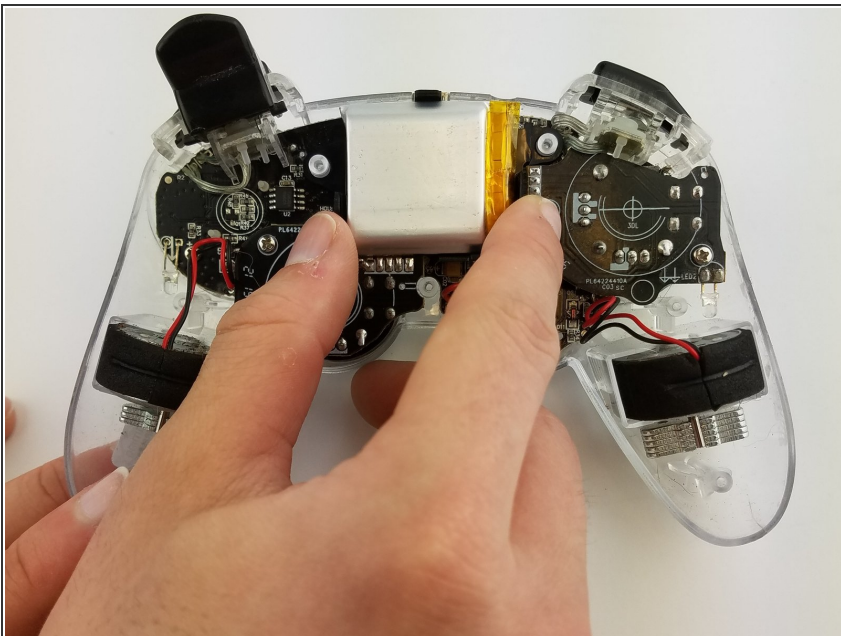
- [64 Bit Driver Kit](#) (1)
  - [Soldering Iron](#) (1)
-

## Step 1 — Back Cover



- Lay the controller face down on a flat surface and remove the seven 9mm Phillips #0 screws on the back of the controller.
- Lift up and remove the controller back plate.

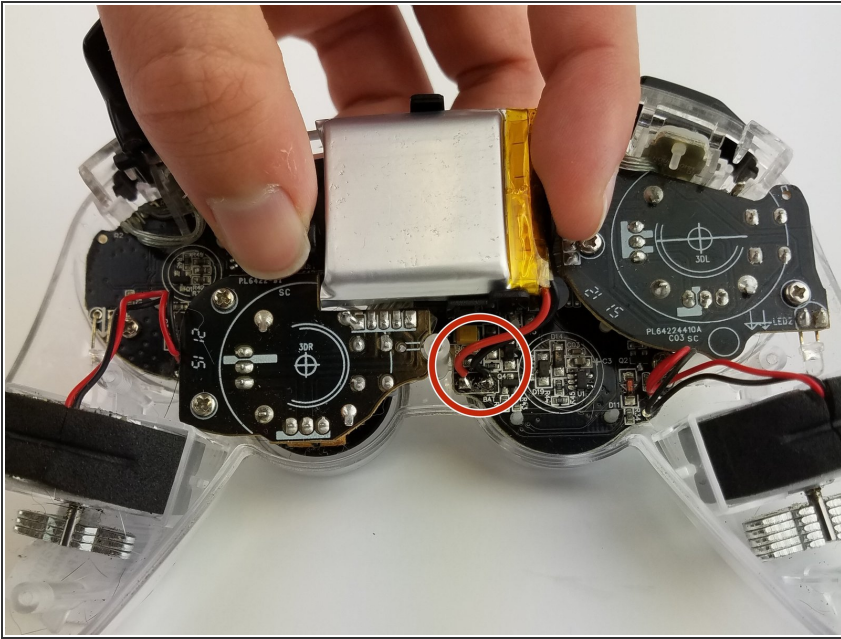
## Step 2 — Battery



- Carefully remove the battery by lifting it straight up from its place.
- ⚠ Keep in mind that the red and black battery wires are attached to the motherboard. Handle these with care.



### Step 3



- Use the soldering tool to heat the solder connecting the battery wires to the motherboard.
- ⓘ The soldering gun will loosen the bonds of the solder allowing the wires to be detached. Use [this guide](#) for further details on how to solder.

To reassemble your device, follow these instructions in reverse order.