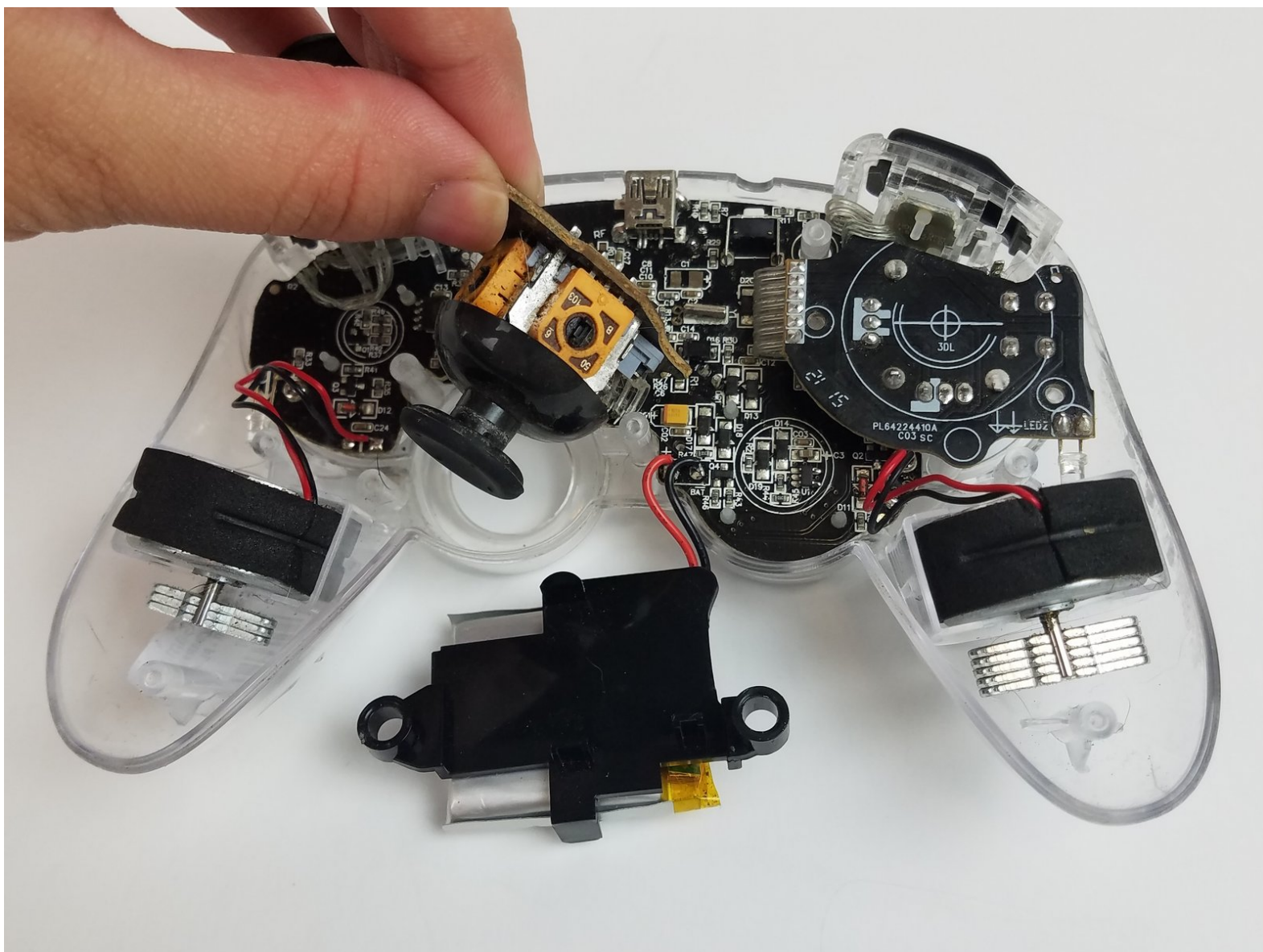




Afterglow Wireless PS3 Controller Joystick Replacement

This guide will show how to replace the black plastic joysticks for the Afterglow Wireless PS3 Controller.

Written By: Aj Coello



INTRODUCTION

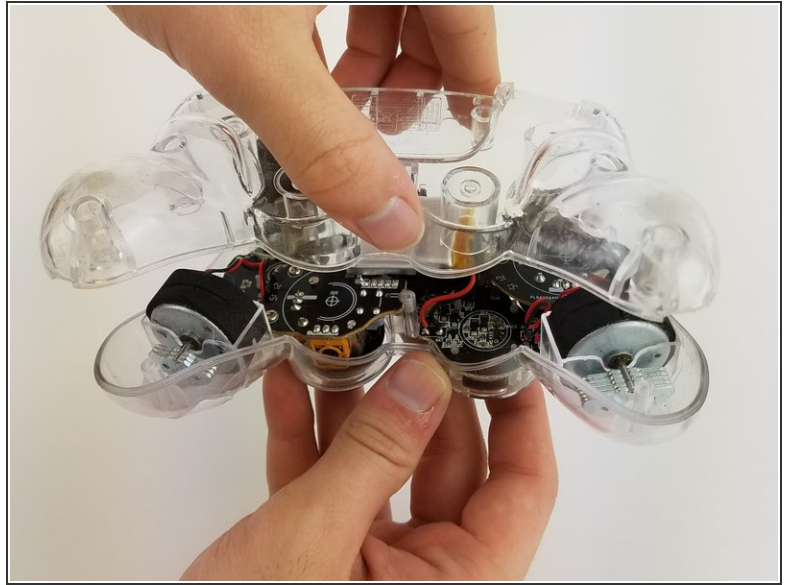
In order to replace the joysticks for the Afterglow Wireless PS3 Controller the back plate must be removed and the joystick boards must be unscrewed.



TOOLS:

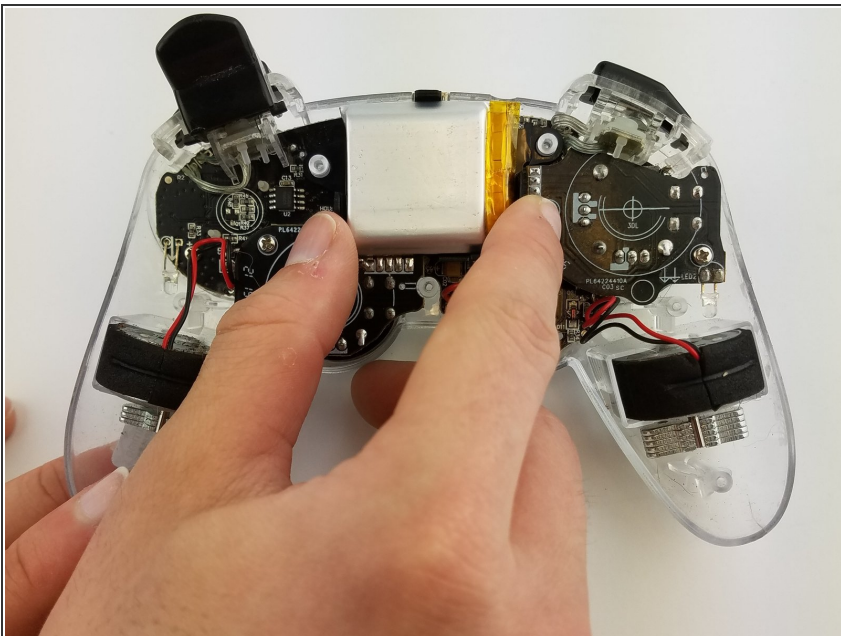
- [Phillips #0 Screwdriver](#) (1)
-

Step 1 — Back Cover



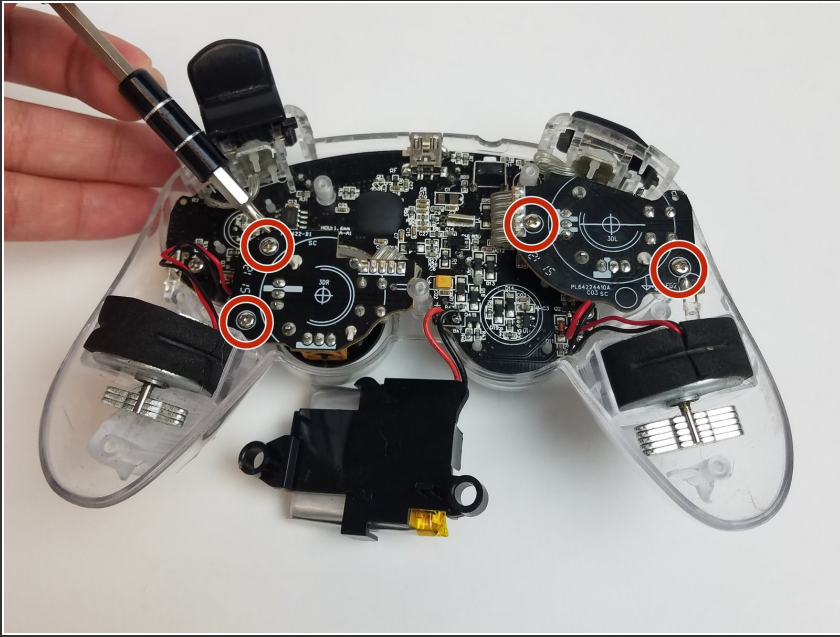
- Lay the controller face down on a flat surface and remove the seven 9mm Phillips #0 screws on the back of the controller.
- Lift up and remove the controller back plate.

Step 2 — Joystick



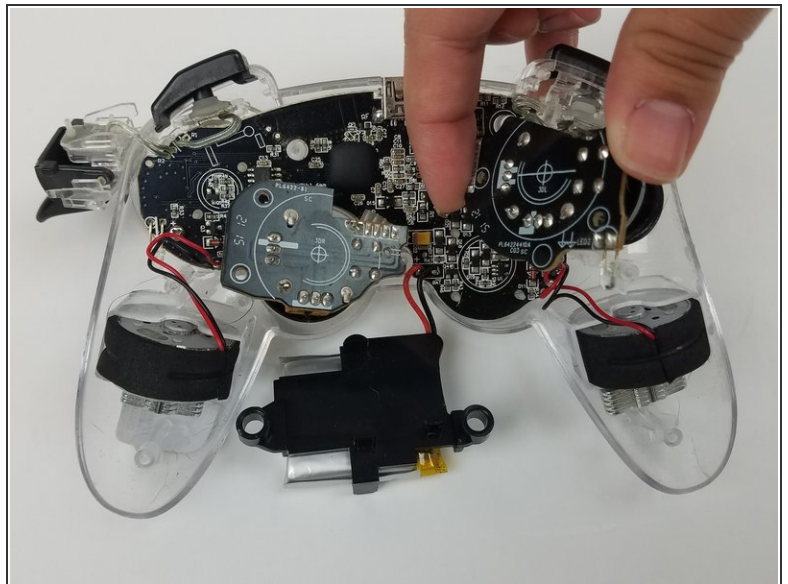
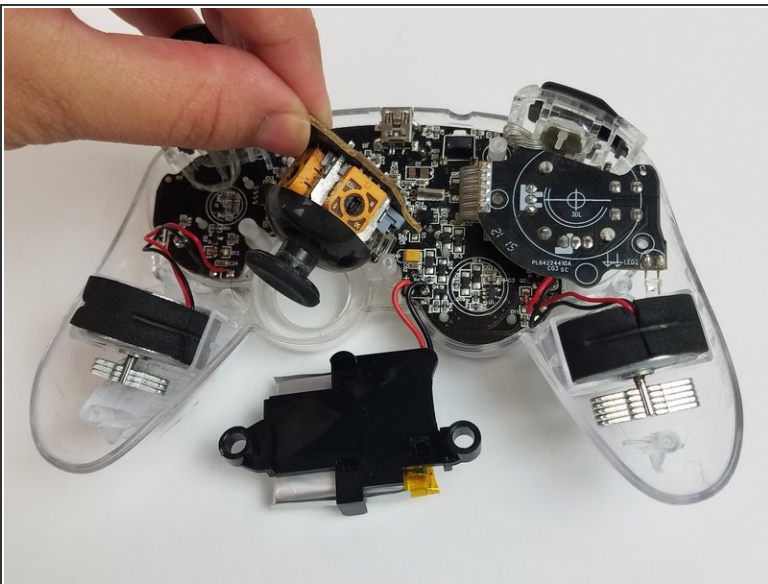
- Carefully remove the battery by lifting it straight up from its place.
- ⚠ Keep in mind that the red and black battery wires are attached to the motherboard. Handle these with care.

Step 3



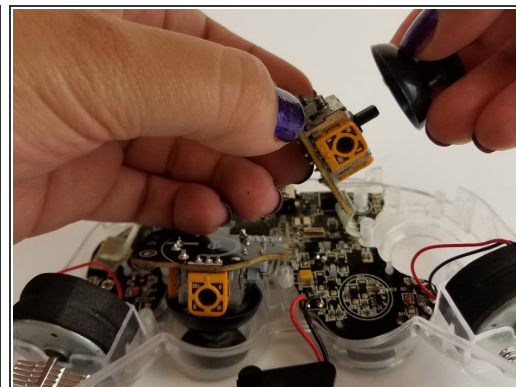
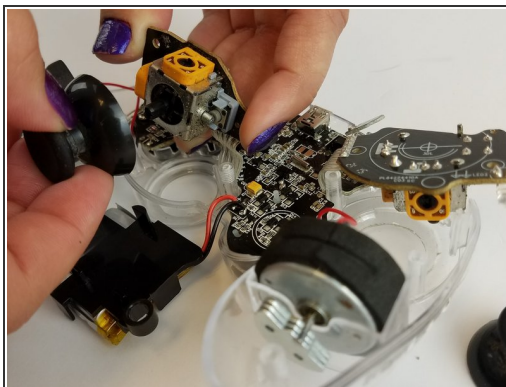
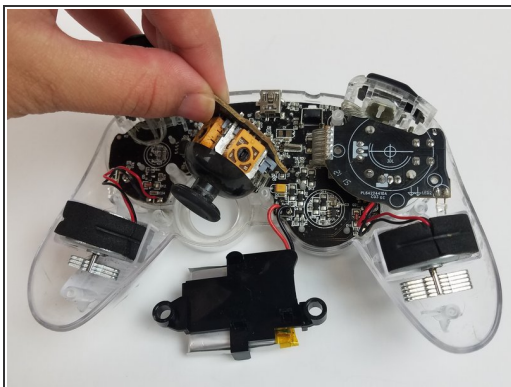
- Unscrew the four 9mm Phillips #0 screws that are attached to both joy stick control mini-motherboards. There are two screws for each mini-motherboard.



Step 4



- Jiggle both joy stick control mini-motherboards out of their holding place.

Step 5



- Firmly grip the joystick housing with your forefingers by the yellow squares.
 - Use your other hand to get a grip on the black plastic joystick and pull directly away from the housing.
-  This will take some force to remove.
-  Try not to use the motherboard for leverage because it is delicate.

To reassemble your device, follow these instructions in reverse order.