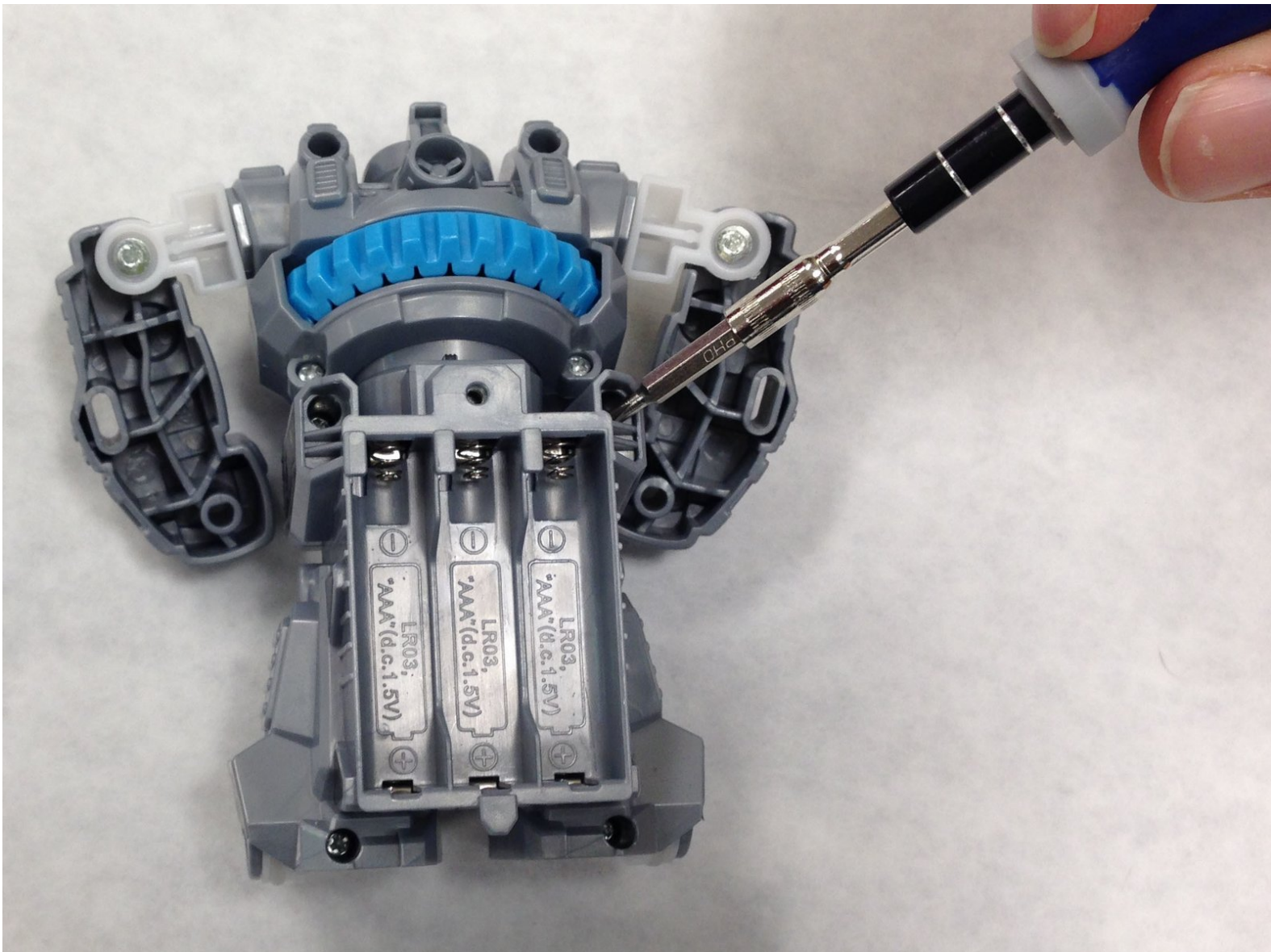




Air Hog Smash Bots External Casing Replacement

This is a prerequisite only guide. The purpose of this guide is to open the Smash Bot Robot to reach internal parts.

Written By: Nick Ciulla



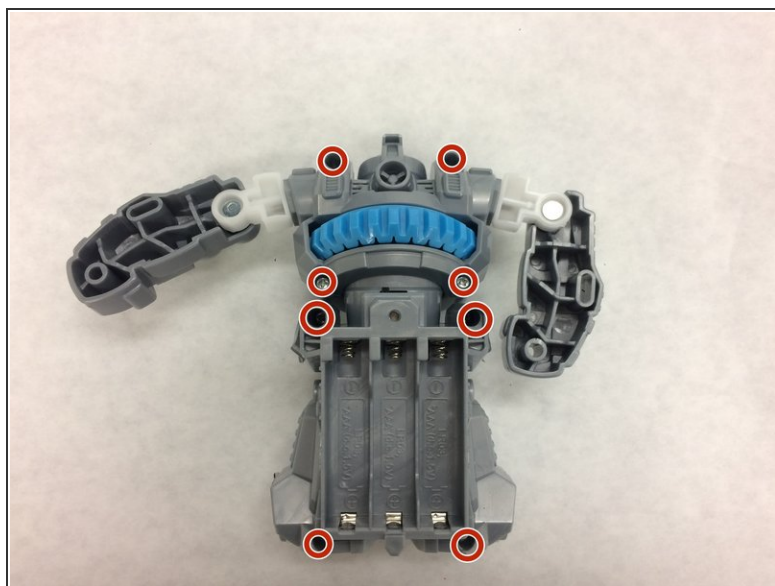
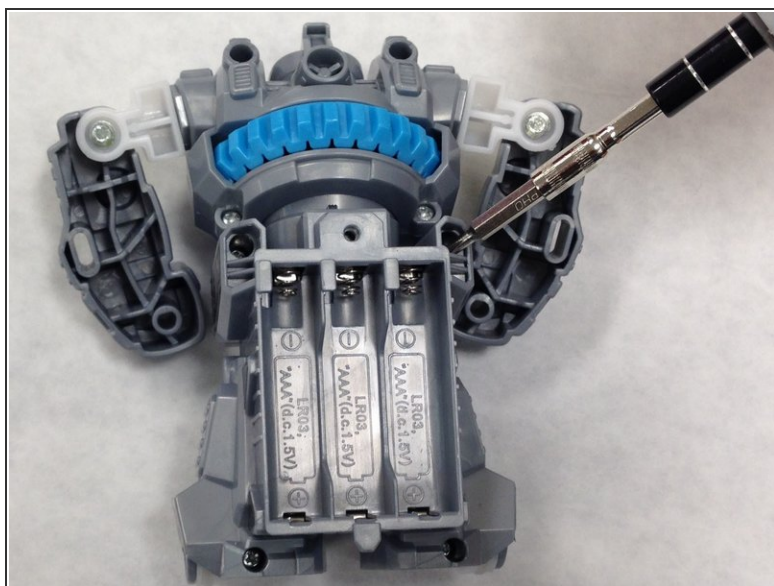
INTRODUCTION

The purpose of this guide is to open the Smash Bot Robot to reach internal parts.

TOOLS:

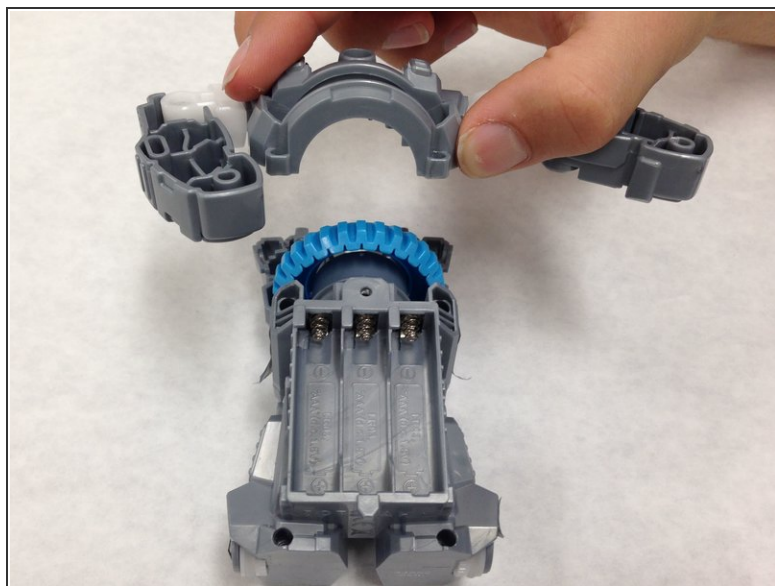
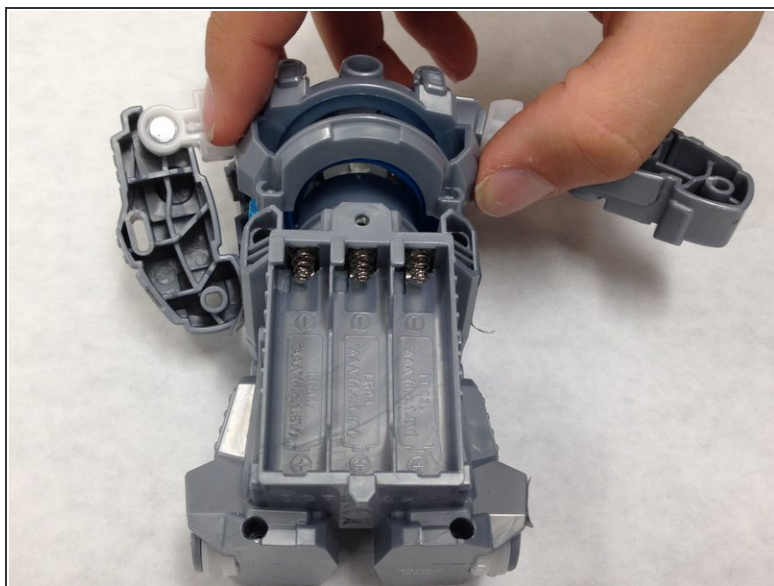
- [8mm Socket Wrench Screwdriver](#) (1)
 - [4mm Nut Driver](#) (1)
 - [Spudger](#) (1)
 - [iFixit Precision Bit Driver, Aluminum](#) (1)
 - [64 Bit Driver Kit](#) (1)
-

Step 1 — External Casing



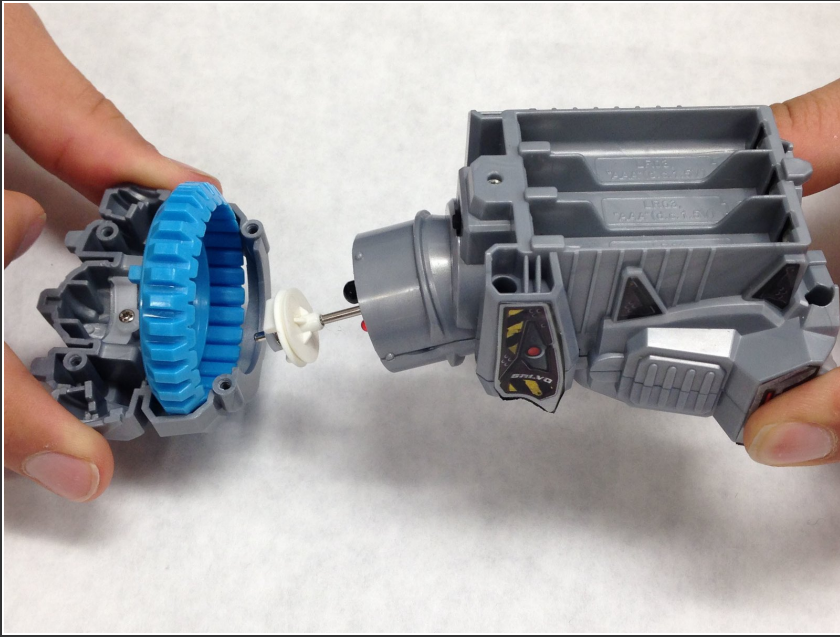
- Using a Phillip #0 screwdriver to remove the eight 8 mm screws.

Step 2



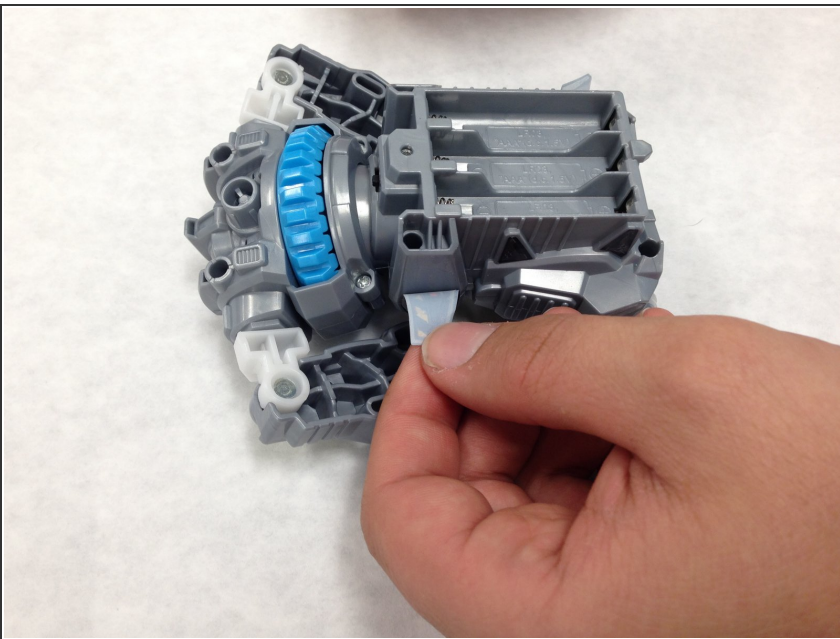
- Remove the upper armor of the Smash Bot.

Step 3



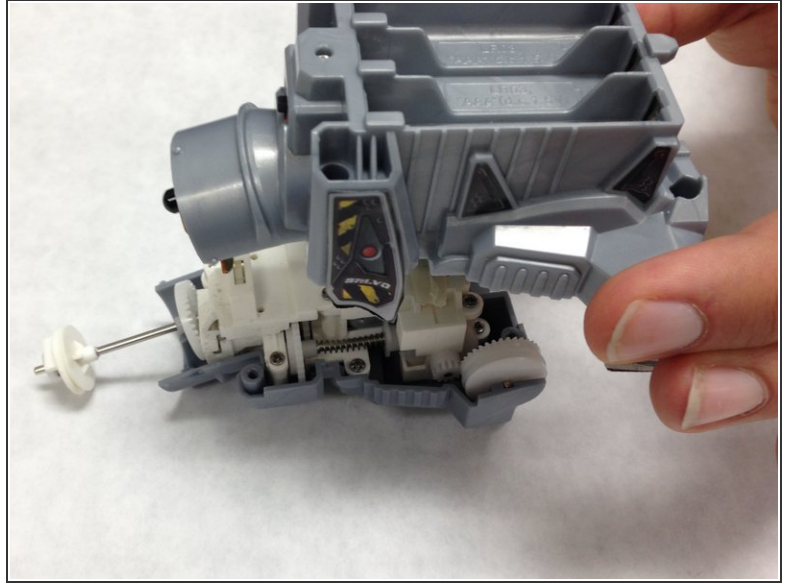
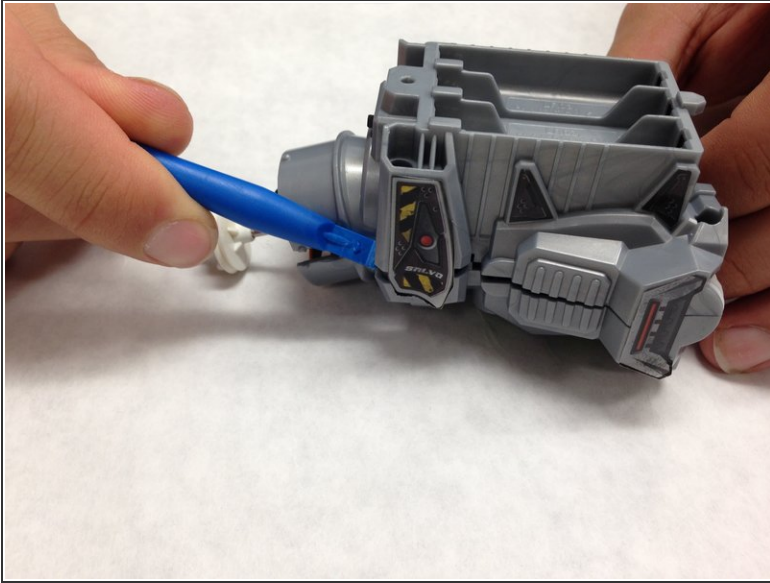
- Hold the upper body and slide out the bottom half of the Smash Bot.
- ⓘ The motor extends from the lower-body into the upper-body. Be careful to not damage the motor.

Step 4



- Peel back the four decal stickers that hold the front and back of the bot together.

Step 5



- Use the plastic opening tool to pry the front and back of the lower body apart.
- Carefully remove the back of the bot from the front.

To reassemble your device, follow these instructions in reverse order.