



Air Hog Smash Bots Front Panel Replacement

Replace the front panel on the controller of your Air Hog Smash Bots.

Written By: Jiani Xie



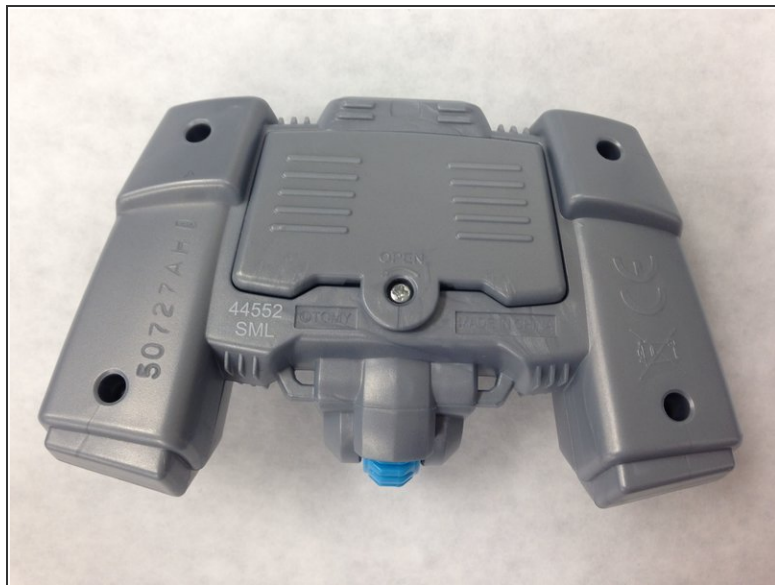
INTRODUCTION

The purpose of this guide is to provide instructions on replacing the front panel and gaining internal access to the controller of the Air Hog Smash Bots.

TOOLS:

- [8mm Socket Wrench Screwdriver](#) (1)
 - [4mm Nut Driver](#) (1)
 - [Spudger](#) (1)
 - [64 Bit Driver Kit](#) (1)
-

Step 1 — Front Panel



- Take out your controller and access to the back of the controller.

Step 2



- Remove the screw on the battery lid. Using the Hex 4 socket and PH #0 bit, remove the 8 mm screw.

Step 3



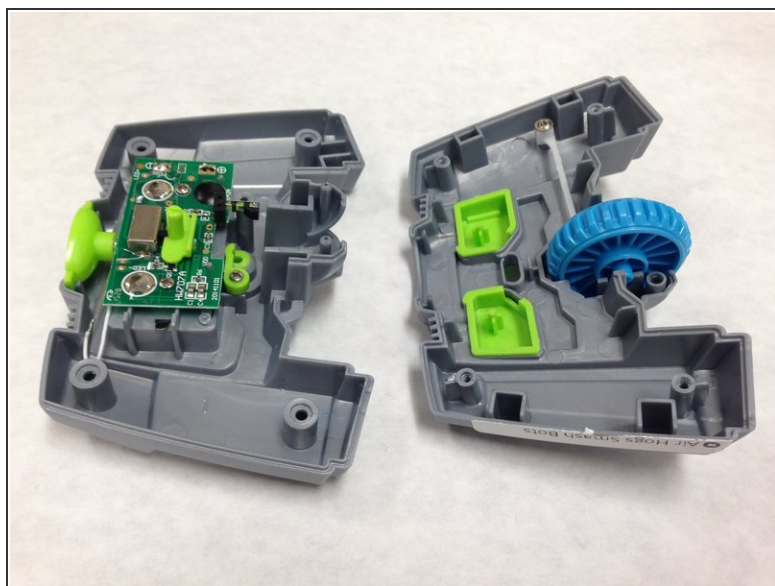
- Remove the 2 AAA batteries.

Step 4



- Using the Hex 4 socket and PH #0 bit, remove the four 8 mm screws on the panel.

Step 5



- Use the plastic opening tool to disconnect the front and back parts of the panel.
- ⓘ Some of the internal components may be displaced when opening the controller.

To reassemble your device, follow these instructions in reverse order.