



# AirPort Extreme A1521 Antenna Array Replacement

This guide will show you how to replace the antenna array.

Written By: Nathan Reeve



---

## INTRODUCTION

This guide is fairly straightforward. You will, however, remove three different types of screws. Keep track of the screws; be careful with the delicate parts, and may the device work ever in your favor.

---



### TOOLS:

- [64 Bit Driver Kit](#) (1)
  - [Magnetic Project Mat](#) (1)
  - [Metal Spudger](#) (1)
  - [Spudger](#) (1)
-


## Step 1 — Internal Structure



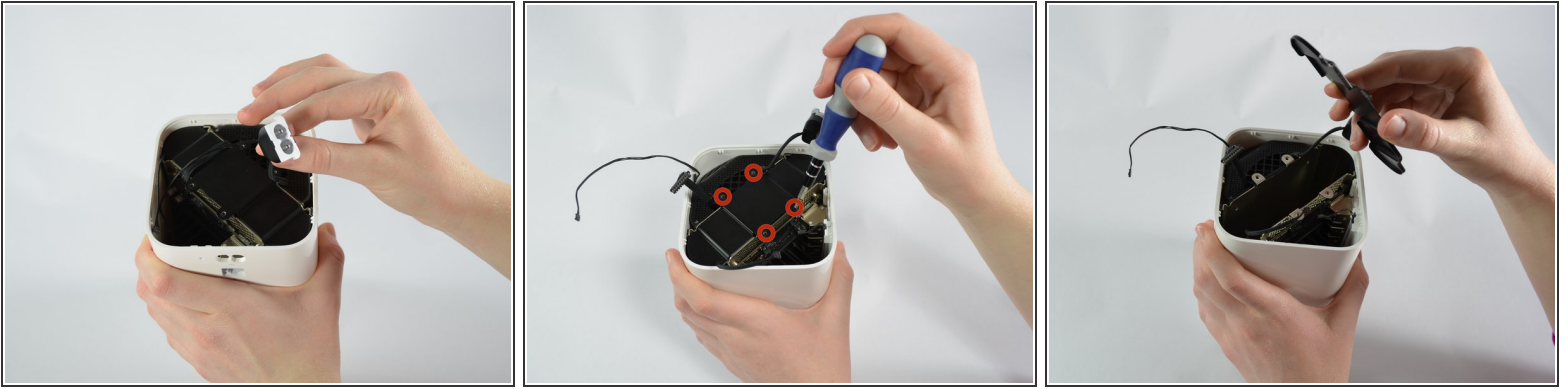
- Using a metal spudger, gently pry the cover off the bottom of the device.

## Step 2



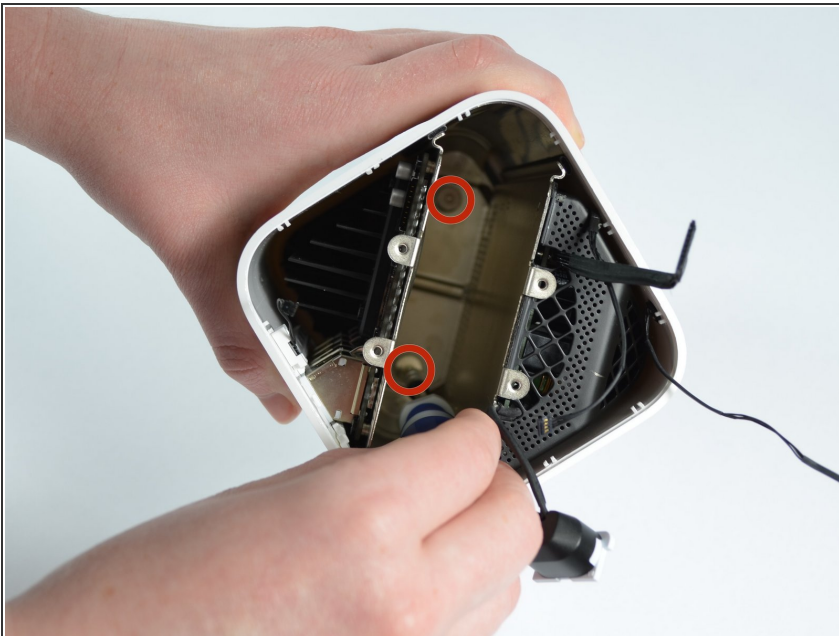
-  Four black internal wires, three thin and one thick, are connected to the logic board: three by small end clips and one by a larger end clip. Handle the clips gently; they break easily.
- To detach the small clips from the connectors, place the flat end of the plastic spudger underneath the clip and gently lever it **away from the center of the device**.
  - To detach the large clip from its connector, place the flat end of the spudger on the clip and lever it **upward** out of the connector.

### Step 3



- Using two fingers, pinch the power supply wire and gently lift it upward. Move it away from the metal plate.
  - Next, unscrew the four 3.3mm T8 Torx screws and remove the metal plate.
- ☒ The metal plate fits snugly into the gap. To reassemble the device, push the rounded edge of the plate into the gap first. This will wedge the gap open so that you can fit the rest of the plate into its proper place.

### Step 4



- Remove the T8 Torx screwdriver head and replace it with the 60 mm extension; then, add the T9 Torx head.
- Loosen, but **do not remove** the two screws at the bottom of the 1.2-inch wide gap in the middle of the internal structure.



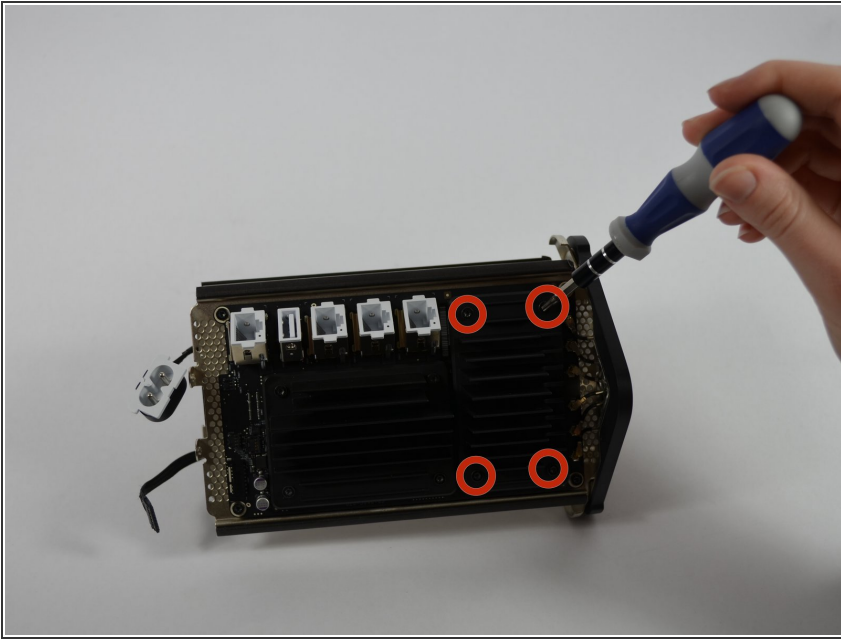
- ⓘ These screws are spring-loaded and will stay in the device, even when loosened; however, it is still possible for them to be fully removed. Be careful to **only partially loosen** them.

## Step 5



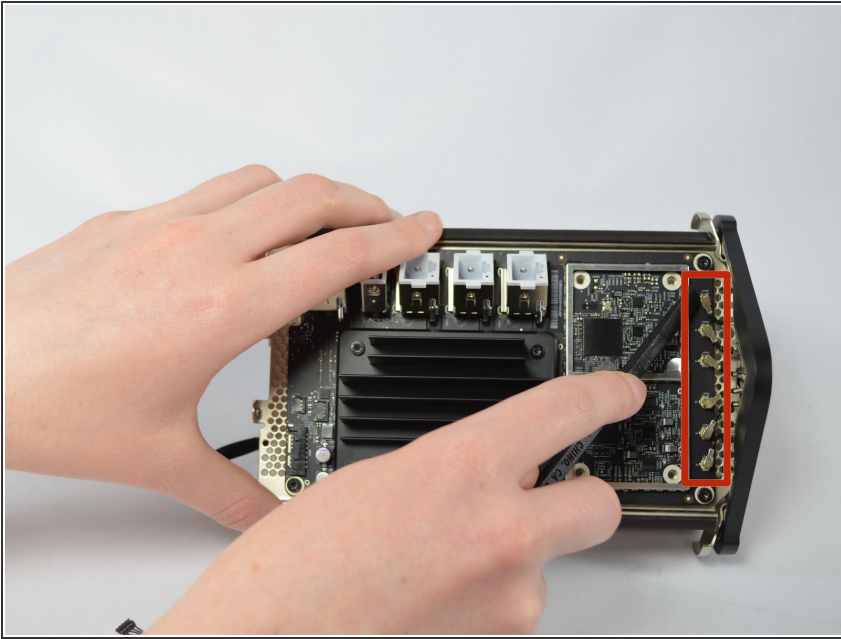
- Using only your fingers, gently compress the internal structure and pull evenly upward to remove it from the white case.
- ✦ When you put the internal structure back into the case, gently compress it, and lower it most of the way into the case. Stop lowering it when the top port has just entered the case. Now push the two sides of the internal structure outward against the sides of the case.
- ✦ Finish lowering the internal structure the rest of the way into the case. The ports should be lined up with the openings in the case and should be flush against the sides of the case.

## Step 6 — Antenna Array



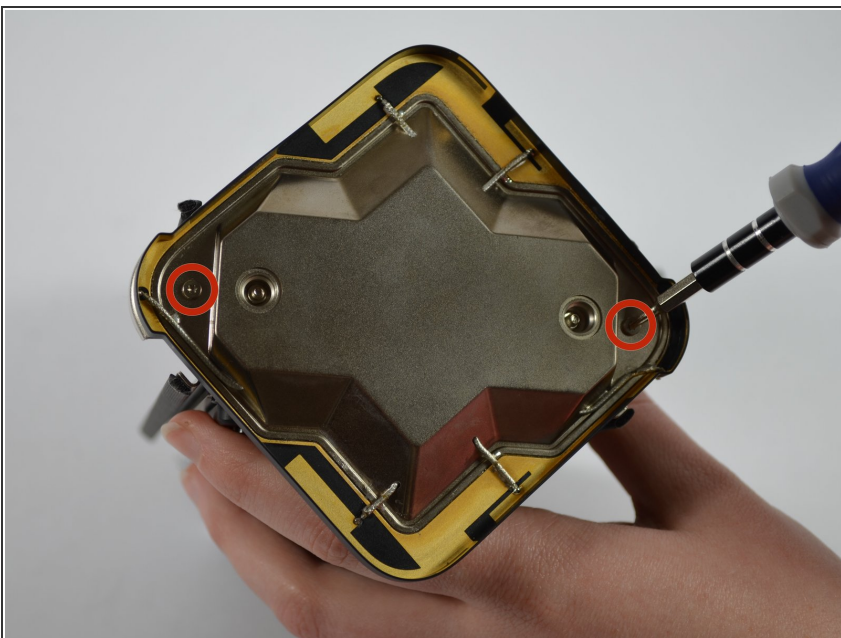
- Rotate the internal structure so that the side containing the 5 white ports is facing upward.
- Unscrew the four 10.25mm T8 screws holding the heat sink.

## Step 7



- Wedge the corner of the plastic spudger under one of the silver antenna clips. Gently lever the tip of the spudger away from the logic board to detach the antenna clip.
- Repeat this for all six clips.

## Step 8



- Turn the internal structure upside down so that the metallic plate (antenna array) is facing upward.
- Unscrew the two 2.8 mm T6 Torx screws and remove the antenna array.

To reassemble your device, follow these instructions in reverse order.