



Akai MPK25 Beat Pad Replacement

This guide will demonstrate how to properly replace the beat pad sensors without damaging any of the surrounding components in the device.

Written By: Serbinder Singh



INTRODUCTION

Problems with the beat pad are common with this device. Use this guide to replace a defective beat pad sensor.



TOOLS:

- [8" Needle Nose Plier](#) (1)
- [Phillips #2 Screwdriver](#) (1)



PARTS:

- [Beat pad sensor](#) (1)

Step 1 — Face Plate



- Remove all the selector knob covers by pulling them off.

Step 2



- Using needle nose pliers, remove the washers from the four corner selector knobs.

Step 3



- Flip the device over. Using a Philips #2 screw driver, remove the fourteen 10.3 mm black screws holding the back panel in place.

Step 4




- Carefully flip the device to the front making sure you secure the face plate and the chassis together.
- ⚠ Please use care in following the step above to avoid ripping the ribbon cables connecting the two sides.

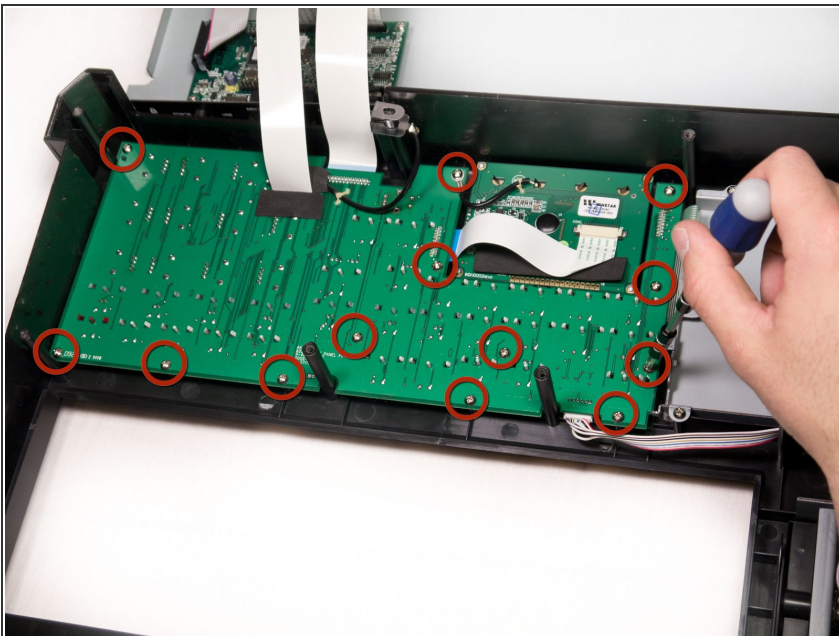
Step 5



- Rotate the device 180 degrees and carefully remove the face plate by slightly lifting the screen side towards you and then sliding the bottom out from under the keys.

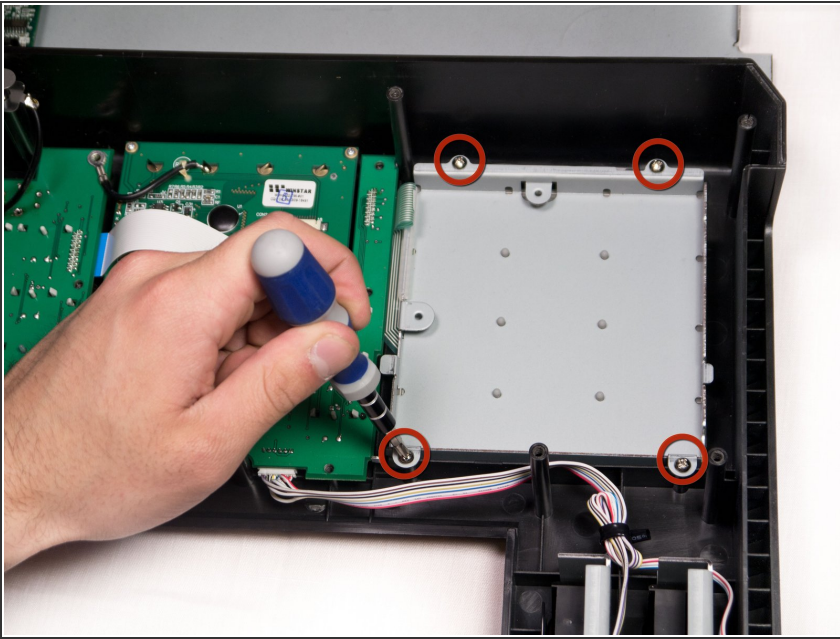
 Use care when doing the step above so that the ribbon connectors which connect the top of the chassis to the top of the face plate are not damaged.

Step 6 — Beat Pad



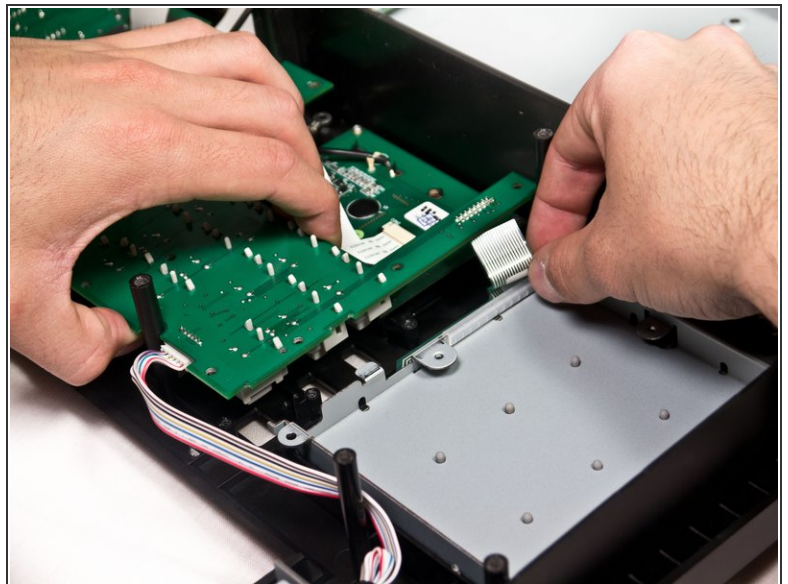
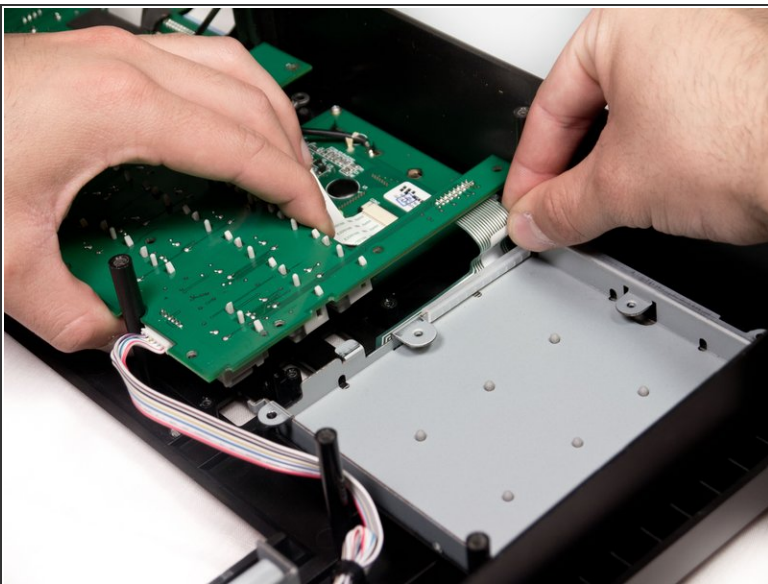
- Using a Phillips #2 screwdriver, remove the thirteen 9.8 mm silver screws holding the mother board to the face plate.

Step 7



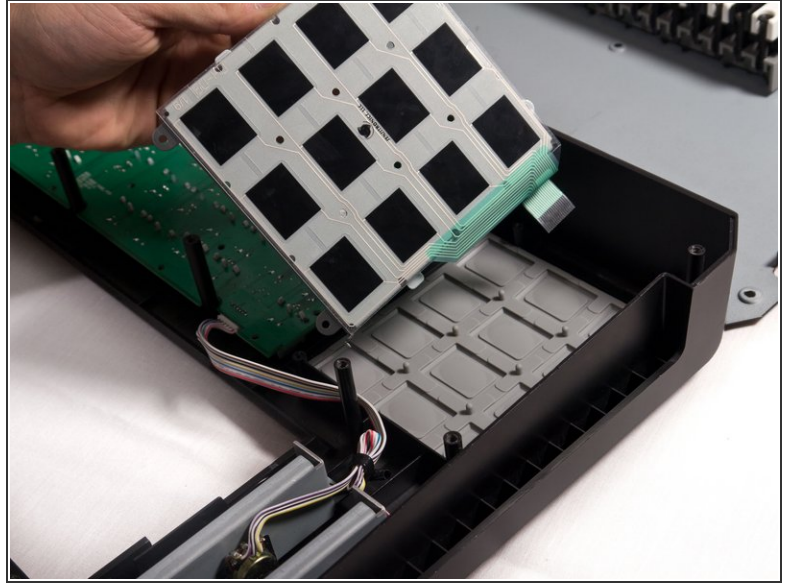
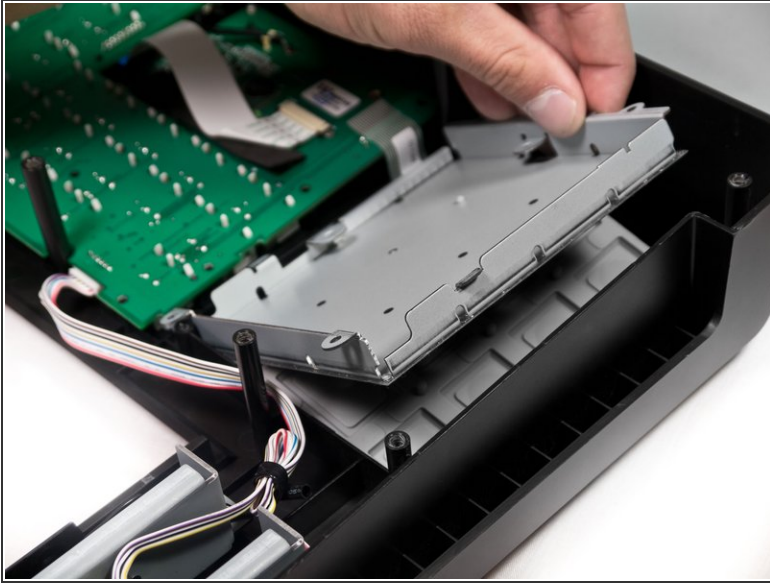
- Using a Phillips #2 screwdriver, remove the four 9.8mm screws holding in the base of the beat pad.

Step 8



- Slightly lift the mother board near the edge of the beat pads and wiggle the beat pad ribbon connector free.

Step 9



- Remove the beat pad sensor from the face plate.

To reassemble your device, follow these instructions in reverse order.