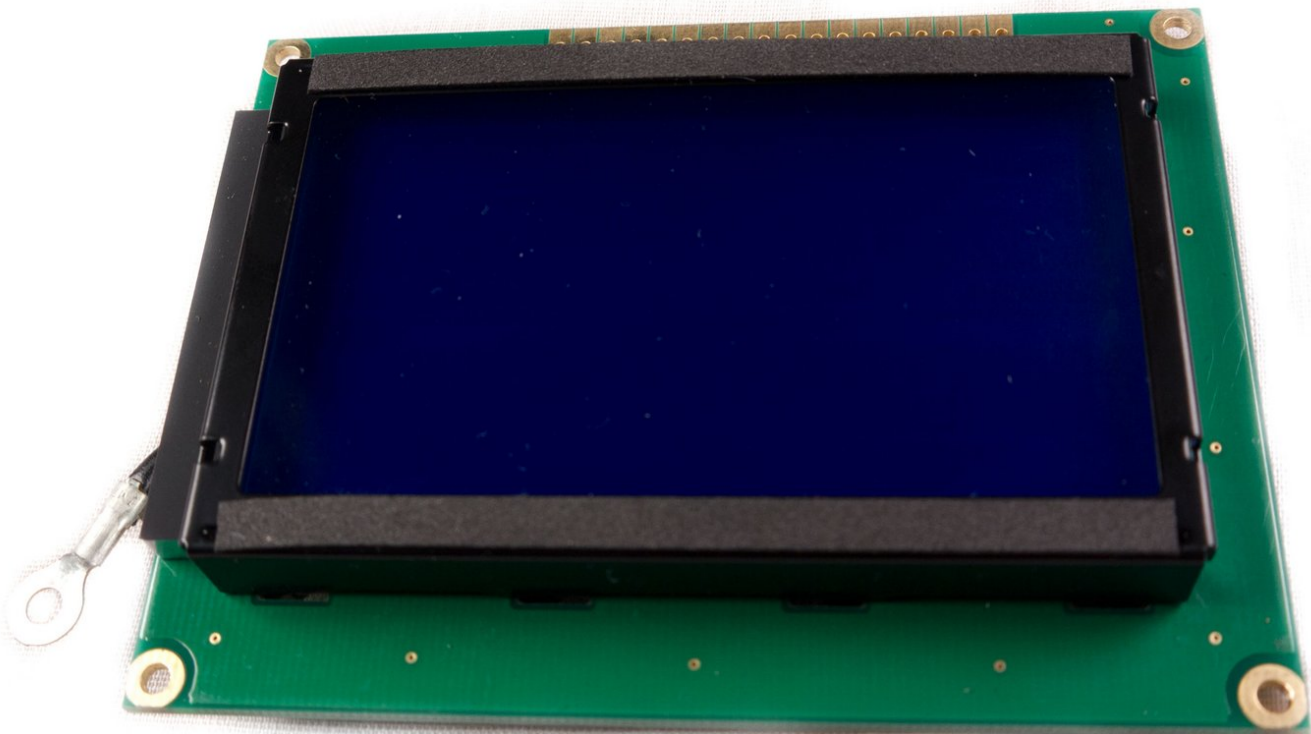




Akai MPK25 LCD Replacement

This guide will demonstrate how to properly install the LCD display.

Written By: Will Saba



INTRODUCTION

Use this guide to replace a screen that is scratched, cracked, or broken.



TOOLS:

- [8" Needle Nose Plier](#) (1)
- [Phillips #2 Screwdriver](#) (1)
- [Phillips #00 Screwdriver](#) (1)
- [iFixit Opening Tools](#) (1)



PARTS:

- [Akai MPK 25 Replacement Screen](#) (1)

Step 1 — Face Plate



- Remove all the selector knob covers by pulling them off.

Step 2



- Using needle nose pliers, remove the washers from the four corner selector knobs.

Step 3



- Flip the device over. Using a Philips #2 screw driver, remove the fourteen 10.3 mm black screws holding the back panel in place.

Step 4



- Carefully flip the device to the front making sure you secure the face plate and the chassis together.
- ⚠ Please use care in following the step above to avoid ripping the ribbon cables connecting the two sides.

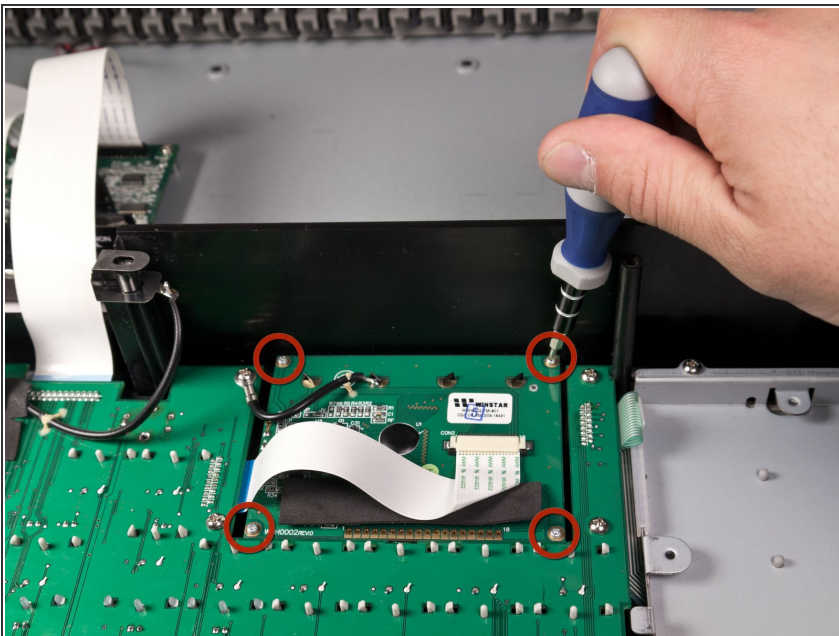
Step 5



- Rotate the device 180 degrees and carefully remove the face plate by slightly lifting the screen side towards you and then sliding the bottom out from under the keys.

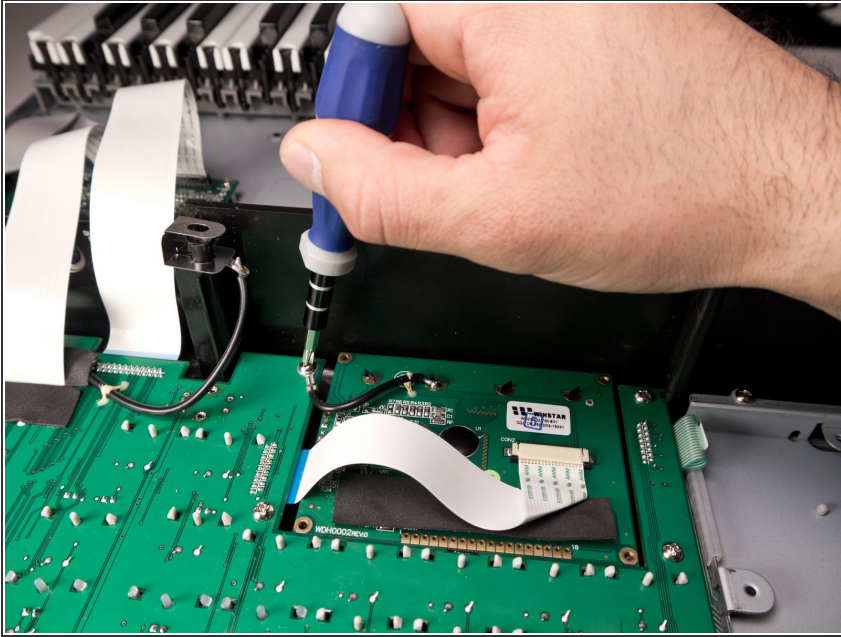
⚠ Use care when doing the step above so that the ribbon connectors which connect the top of the chassis to the top of the face plate are not damaged.

Step 6 — LCD



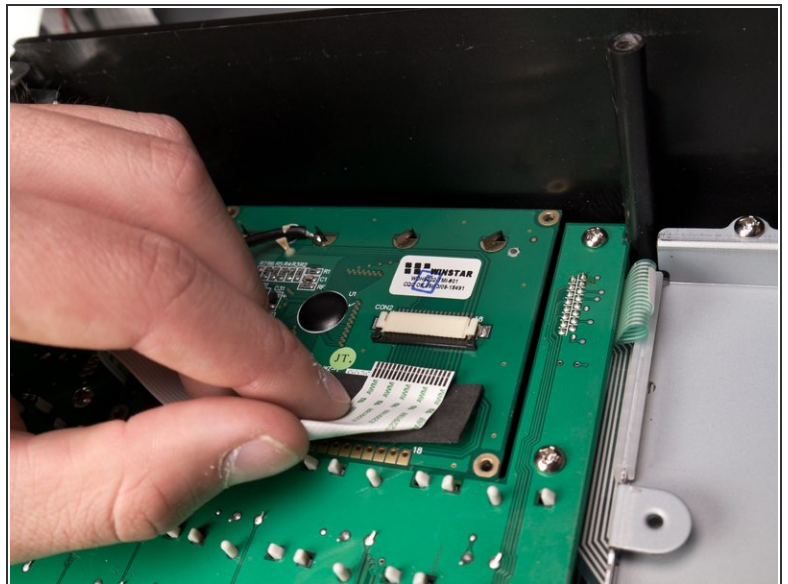
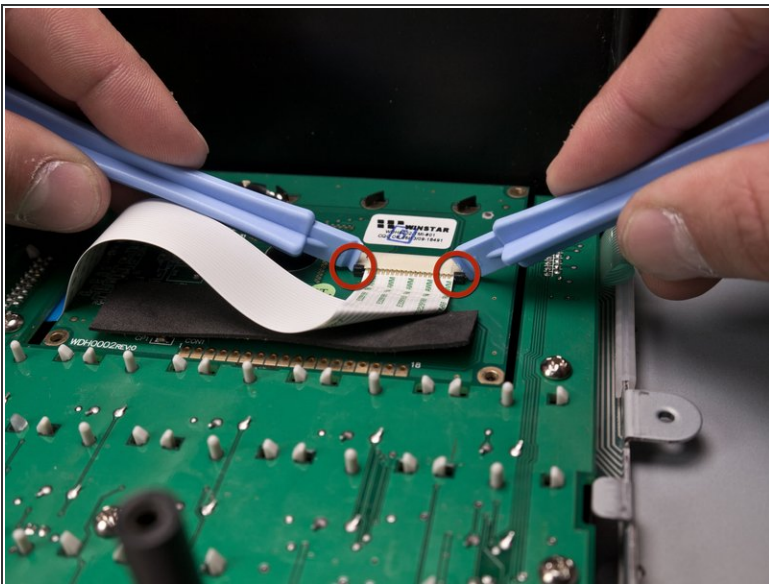
- Using a Phillips #00 screwdriver, remove the four 8.9 mm screws.

Step 7



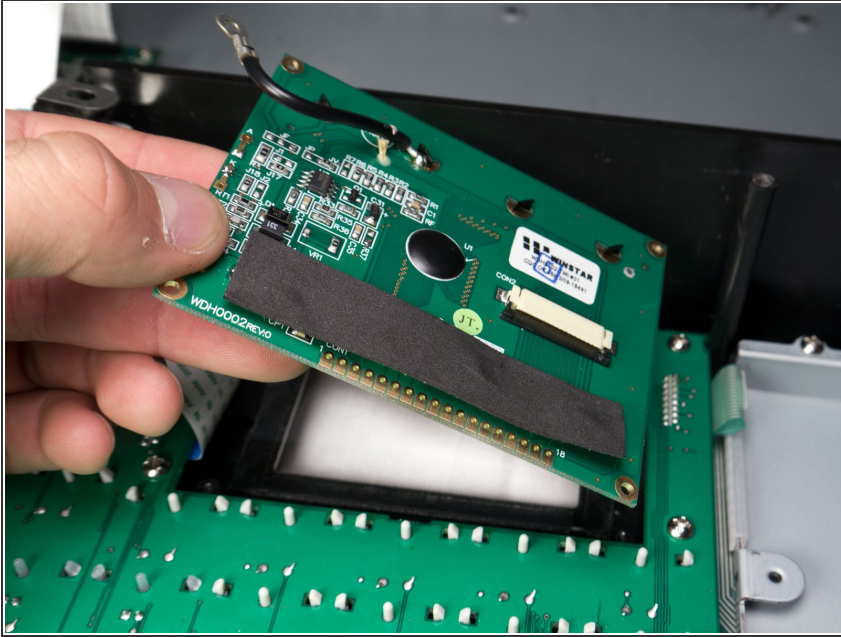
- Using a Phillips #2 screwdriver, remove the one 9.8mm screw holding down the ground wire.

Step 8



- Using two plastic opening tools, slide the black locking mechanism on the ZIF connector towards you. This will remove the ribbon cable connecting the motherboard to the screen.

Step 9



- Lift the screen from either side, removing it from the board.

To reassemble the display, follow these instructions in reverse order.