



Akai Retro Boom CD player model CE2200

Speaker Replacement

The purpose of this guide is to demonstrate how to replace the speakers of a Akai Retro Boom CD player model CE2200.

Written By: Charlotte Kong



INTRODUCTION

If you find that the sound quality of your Akai RetroBoombox model CE 2200 has decreased or is not as clear as it once was, it is likely a speaker problem. You can follow the steps of this guide in order to replace the speakers.

Before proceeding to follow this guide, make sure that it truly is an internal speaker problem. For instance, check the power source of the radio and whether or not it runs on batteries and whether or not those batteries are weak or dead. If it uses a power cord, make sure to check if it's damaged in any way or if it's pinched.

In addition, if you have checked the power sources, do be sure to disconnect them before attempting to disassemble the radio.



TOOLS:

- [Phillips #2 Screwdriver](#) (1)
4 inches+
 - [Jimmy](#) (1)
 - [Spudger](#) (1)
-

Step 1 — Speaker



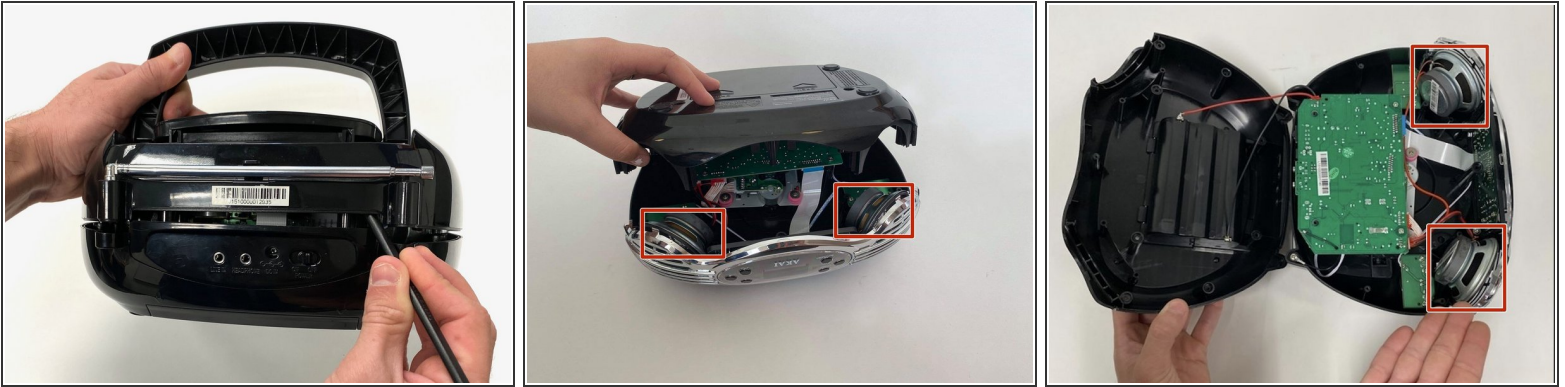
- Remove the batteries located under the radio by sliding open the removable panel.

Step 2



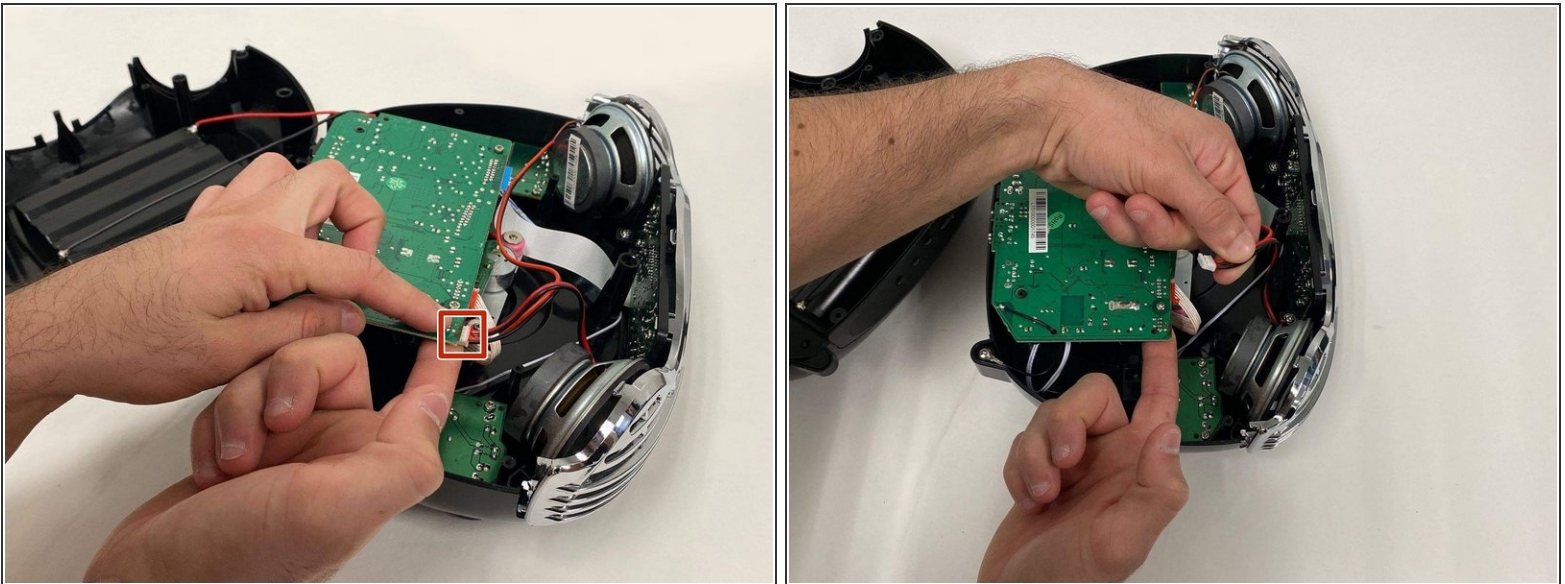
- Use a six inch Phillips #2 screwdriver to remove the screws that hold the clamshell body together.
 - There will be six (6) screws at the bottom of the speaker, one (1) screw in the CD player, and two (2) under the battery panel. A total of nine (9) screws.
- i** Each screw is 12.7 millimeters.

Step 3



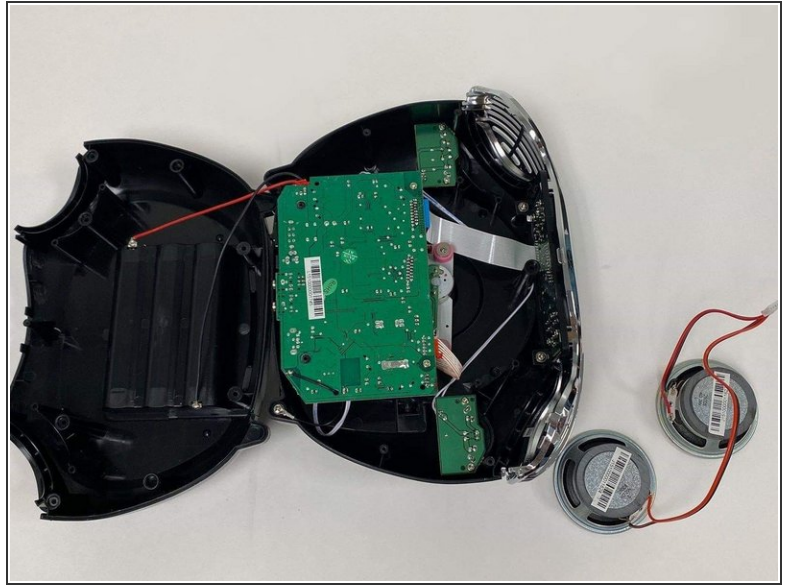
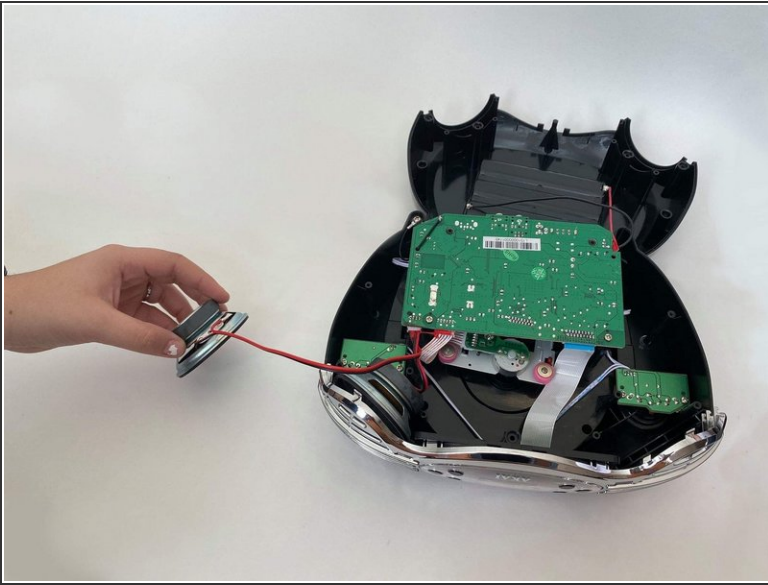
- Use the plastic spudger or the Jimmy to gently pry open the plastic shell halves from each other.
- The red boxes highlight the speakers you are replacing.
- ⚠ Be careful of loose wiring when prying the halves open.

Step 4



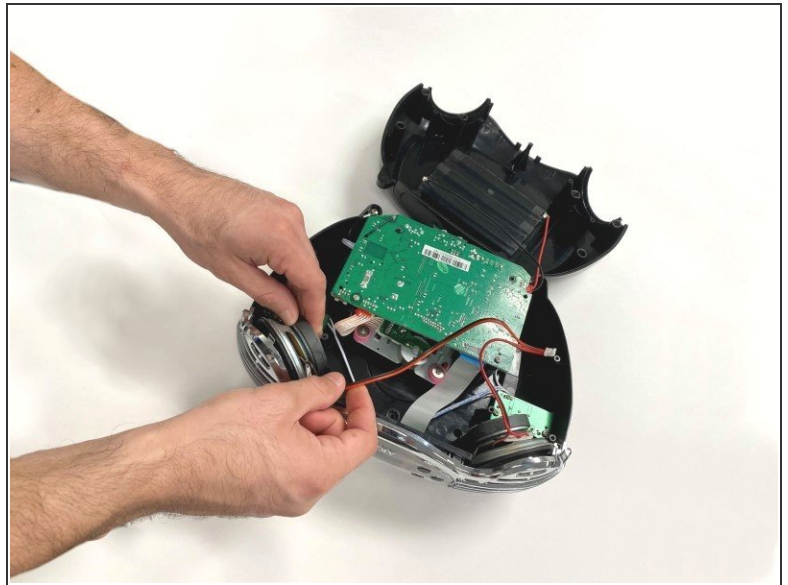
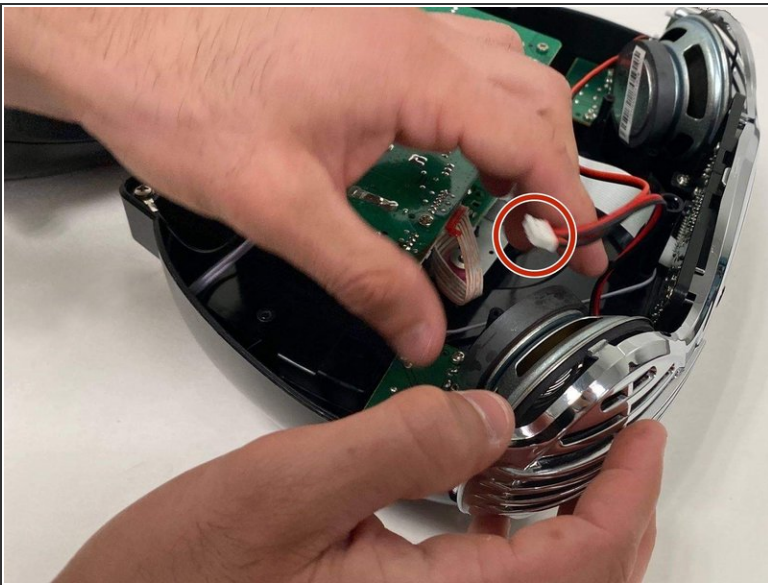
- Unplug the small red connector from the circuit board.
- Be firm with your pinch and pull gently.

Step 5



- Carefully remove the speakers from their placeholders by lifting each speaker up.
- Set removed speakers aside and recycle them later.

Step 6



- Insert new speakers where the old ones were located
- Then connect the new speakers to the circuit board.

