



Alcatel One Touch Evolve 2 Back Frame Replacement

This guide is a prerequisite guide to accessing the internal components of the phone that need replacing.

Written By: Andrew Bai



INTRODUCTION

This guide is a prerequisite guide to accessing the internal components of an Alcatel One Touch Evolve 2 phone that need replacing. Be aware that the phone is made of many plastic and electronic parts, so be gentle and diligent when using any force.





TOOLS:

- [iFixit Pro Tech Toolkit](#) (1)
 - [iFixit Opening Tools](#) (1)
 - [JIS Driver Set](#) (1)
 - [J000](#)
 - [Metal Spudger](#) (1)
-

Step 1 — Back Frame



 Turn off the phone before proceeding with disassembly to prevent shock and potential shorting of any electrical components.

- Remove the back cover using one of the plastic opening tools and the slit in one of the corners.
-  Be gentle when prying so as to not wear out the tool.

Step 2



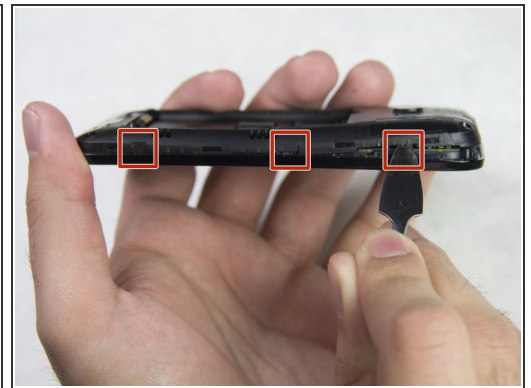
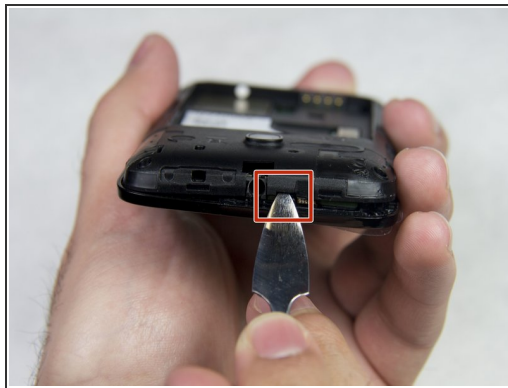
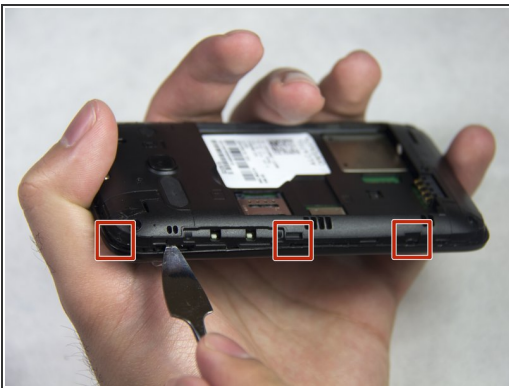
- Remove the battery using one of the plastic opening tools and the dome-shaped indent next to the battery face.

Step 3



- Unscrew the four 4mm JIS screws in each corner using the J000 screwdriver head. Turn the screws counter-clockwise to loosen.

Step 4



- Insert a plastic or metal spudger between the front cover and rear frame in one of the areas indicated by the red squares and gently pry the rear frame loose. Repeat the process all the way around the phone until the rear frame comes loose.

Step 5



- Pull the rear frame off with your hands.

To reassemble your device, follow these instructions in reverse order.