



Alcatel One Touch Evolve 2 Main Circuit Board Replacement

This guide serves as a prerequisite guide to replacing the front speaker, front camera, headphone jack, and charging port.

Written By: Andrew Bai



This document was generated on 2019-10-04 01:13:13 AM (MST).

INTRODUCTION

This guide serves as a prerequisite guide to replacing the front speaker, front camera, headphone jack, and charging port of an Alcatel One Touch Evolve 2 phone.



TOOLS:


- [JIS Driver Set](#) (1)


J000

- [iFixit Pro Tech Toolkit](#) (1)
 - [iFixit Opening Tools](#) (1)
 - [Metal Spudger](#) (1)
-

Step 1 — Back Frame



 Turn off the phone before proceeding with disassembly to prevent shock and potential shorting of any electrical components.

- Remove the back cover using one of the plastic opening tools and the slit in one of the corners.
-  Be gentle when prying so as to not wear out the tool.

Step 2



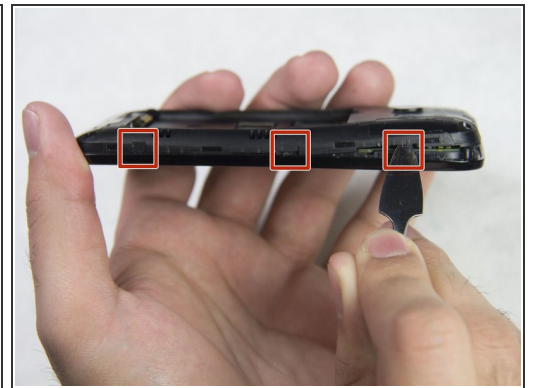
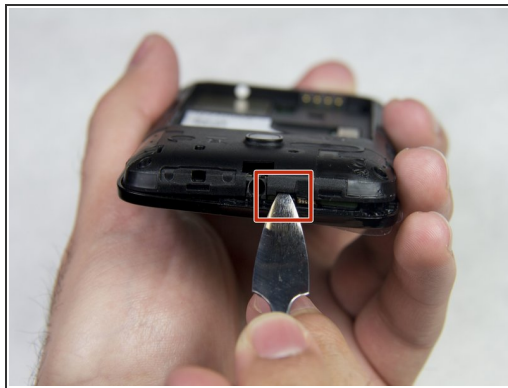
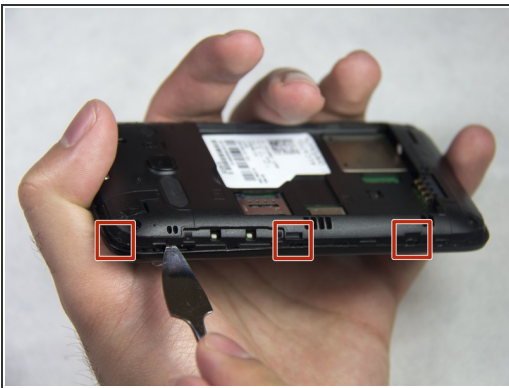
- Remove the battery using one of the plastic opening tools and the dome-shaped indent next to the battery face.

Step 3



- Unscrew the four 4mm JIS screws in each corner using the J000 screwdriver head. Turn the screws counter-clockwise to loosen.

Step 4



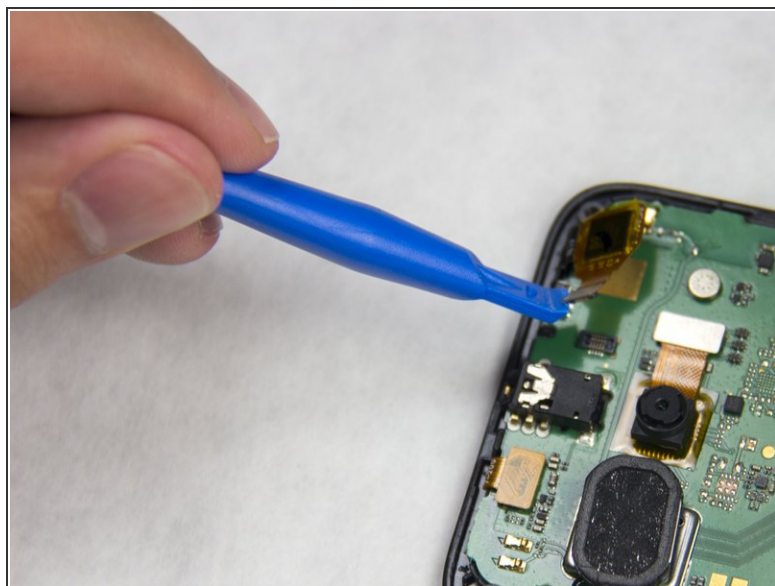
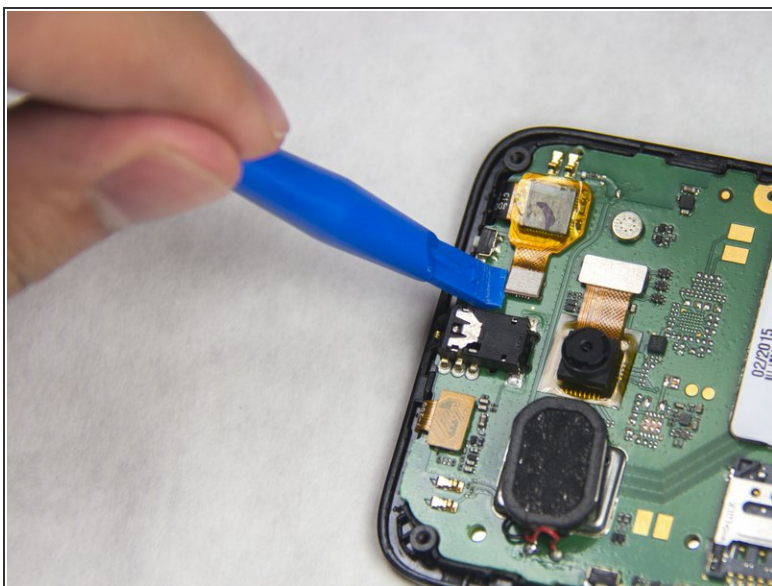
- Insert a plastic or metal spudger between the front cover and rear frame in one of the areas indicated by the red squares and gently pry the rear frame loose. Repeat the process all the way around the phone until the rear frame comes loose.

Step 5



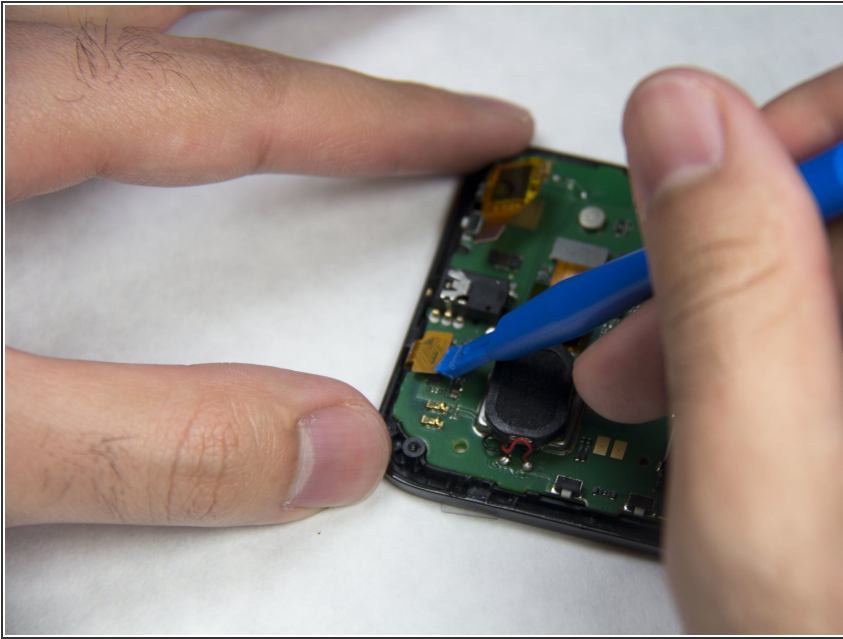
- Pull the rear frame off with your hands.

Step 6 — Main Circuit Board



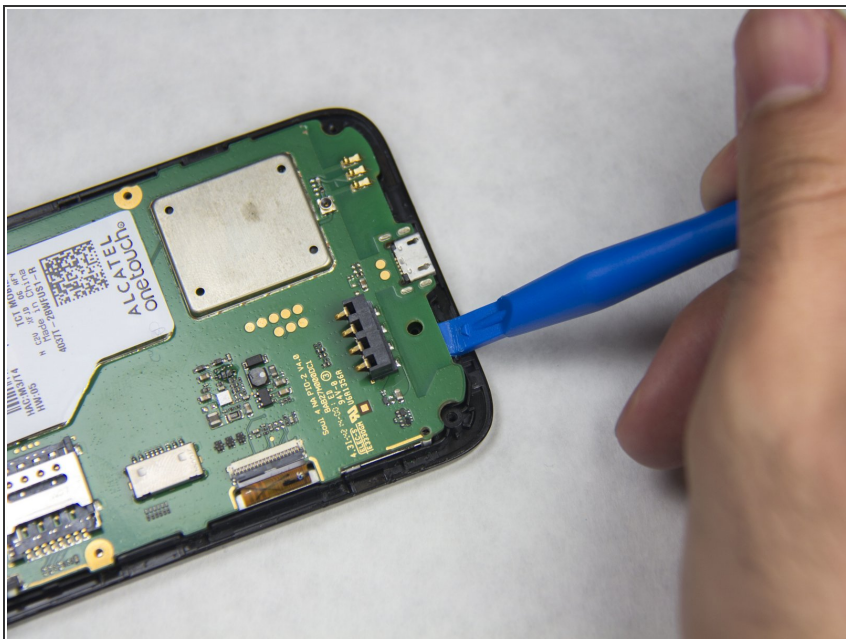
- Use a plastic opening tool to pop the speaker [press-fit connector](#) free.
- Slide the edge of the tool under the connector and gently lift up on the edge; the connector should pop free with little force.

Step 7



- Use a plastic opening tool to lift the front camera press-fit connector free.

Step 8



- Insert one of the plastic opening tools into any side of the main circuit board and gently pry it loose from the front cover. Repeat the process all around the circuit board.

Step 9



- Detach the main circuit board from the front cover.

To reassemble your device, follow these instructions in reverse order.