



Alcatel One Touch Pop 7 Motherboard Replacement

This guide will show the user how to replace the motherboard for the Alcatel One Touch Pop 7.

Written By: Riley Cooper



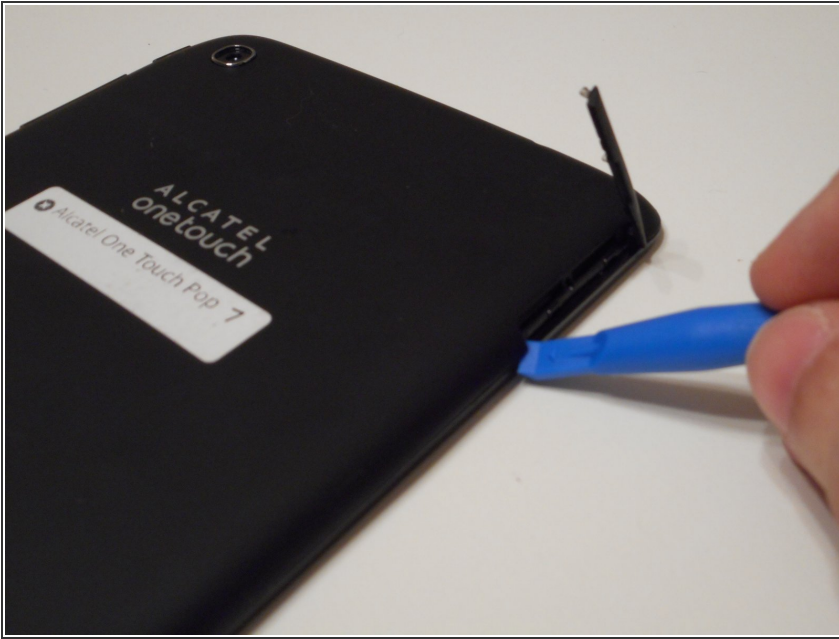
INTRODUCTION

A faulty motherboard could cause many problems as it is the core of the device. This guide will show you how to replace the motherboard and should fix a whole host of problems you may be having.

TOOLS:

- [Tweezers](#) (1)
 - [Phillips #00 Screwdriver](#) (1)
 - [iFixit Opening Tools](#) (1)
-

Step 1 — Volume Button Assembly



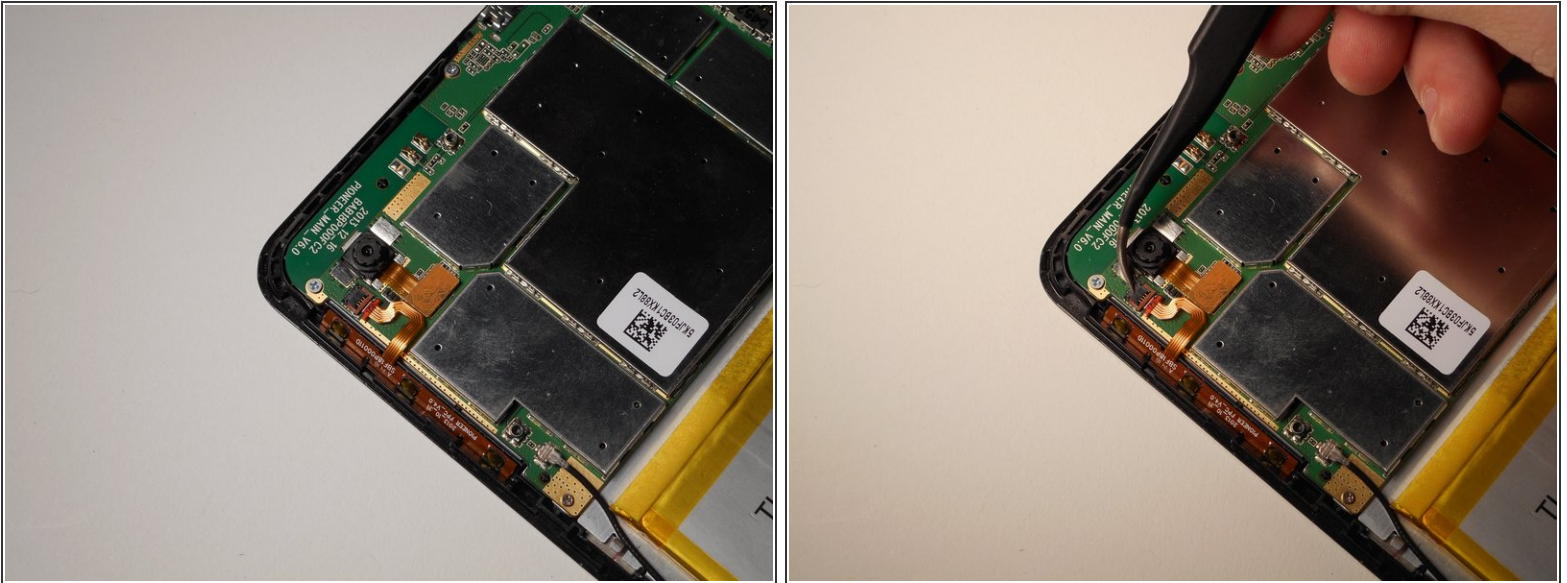
- Begin working by using the plastic opening tool to remove the back cover of your Alcatel One Touch Pop 7. Opening the flap as shown in the picture will give you an easier start.

Step 2



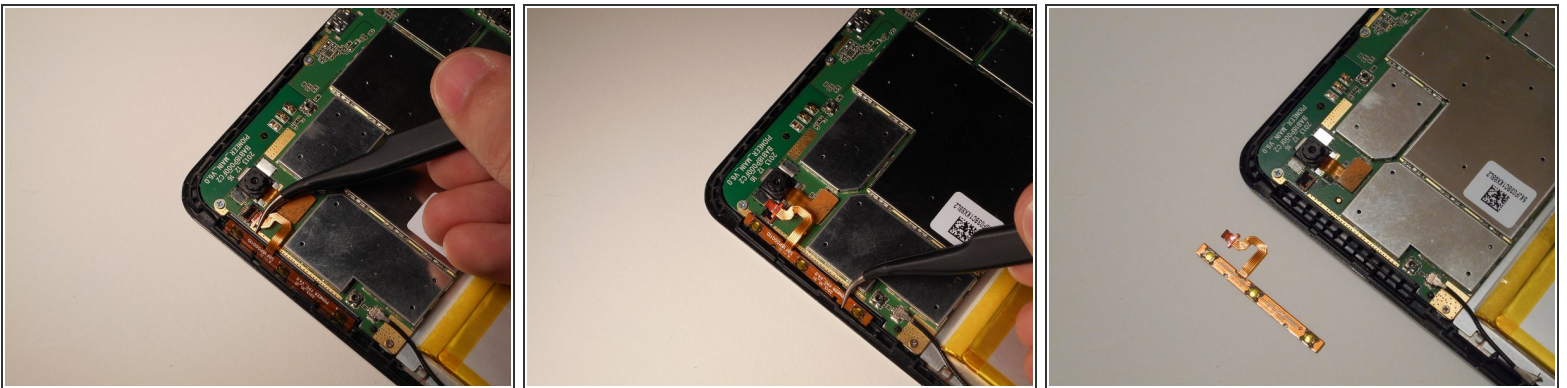
- With the back cover removed you will now want to disconnect the battery. Use the tweezers and gently pull the wires as shown in the second picture.

Step 3



- The volume button assembly is in the top left corner of the tablet. To begin, you will have to pull the small black tab of the ZIF connector, shown in the second picture, to be able to remove the assembly. The tab is on a hinge so it should not be pulled off completely.

Step 4



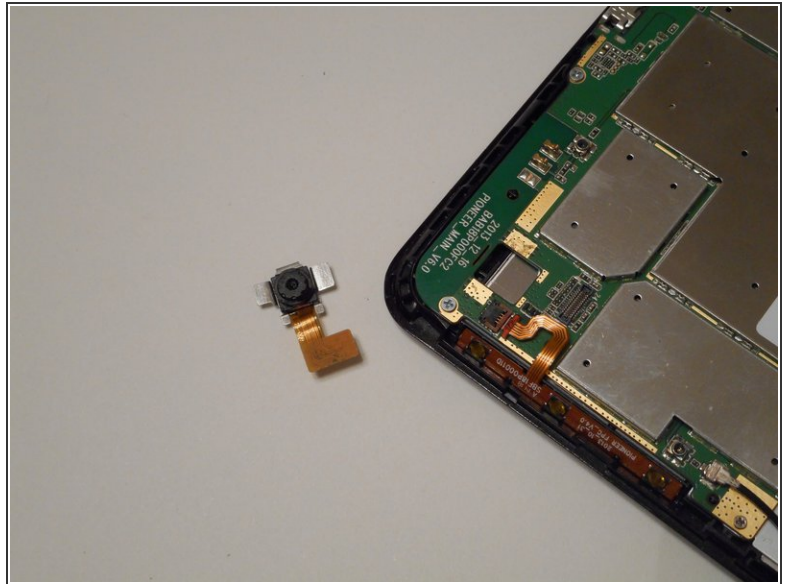
- Pull the copper ribbon cable from the tab. It should be easily removed, as the ZIF connector is the only thing holding it in place.
- Next up is removing the volume button assembly. Another easy removal, simply pull the assembly away from the device and you're done with the removal process.

Step 5 — Rear Camera



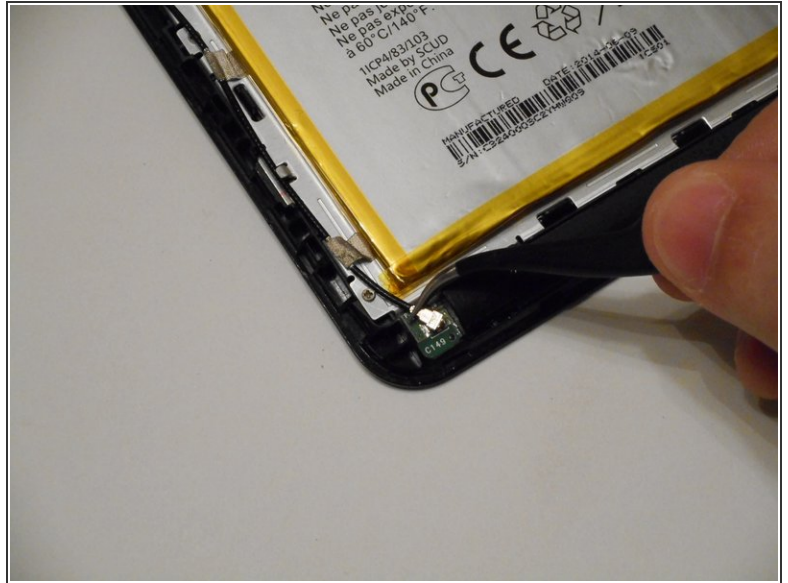
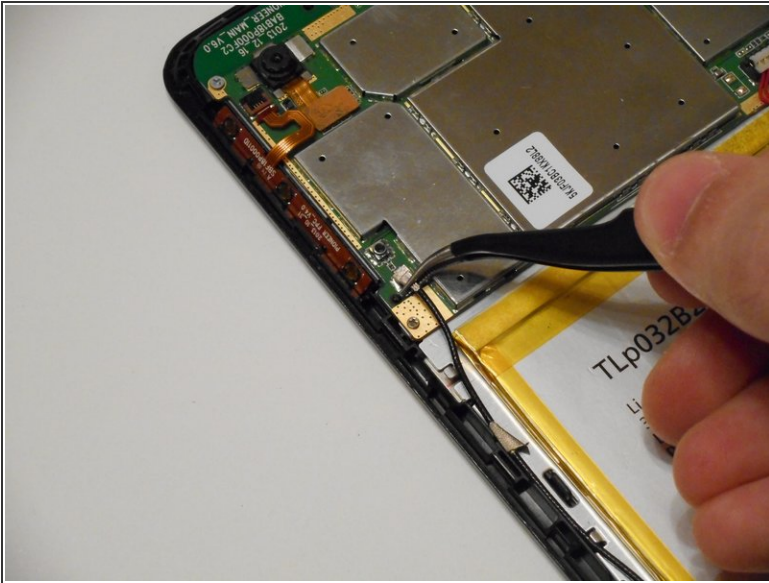
- The camera is in the top left corner of the tablet. To begin removal, use the tweezers to gently disconnect the ribbon cable attached to the camera.

Step 6



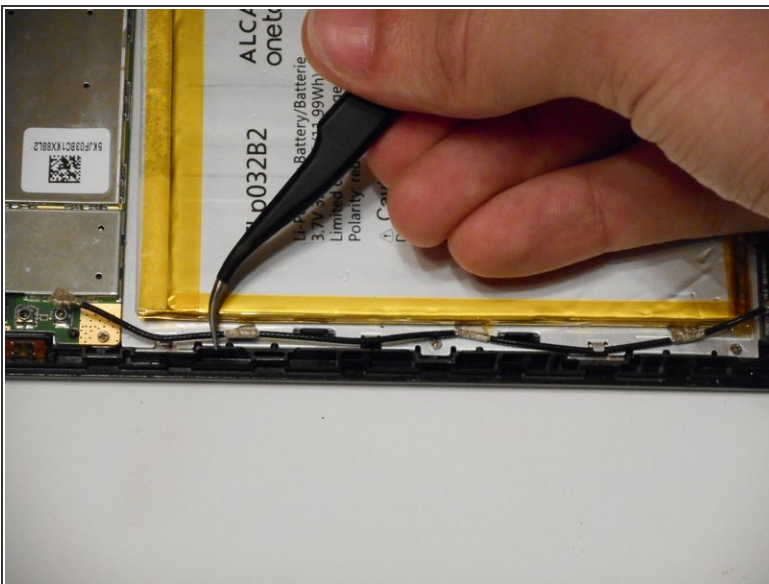
- Pull the actual camera piece from the camera slot. It may stick a bit but it shouldn't be too difficult.

Step 7 — WIFI Antenna



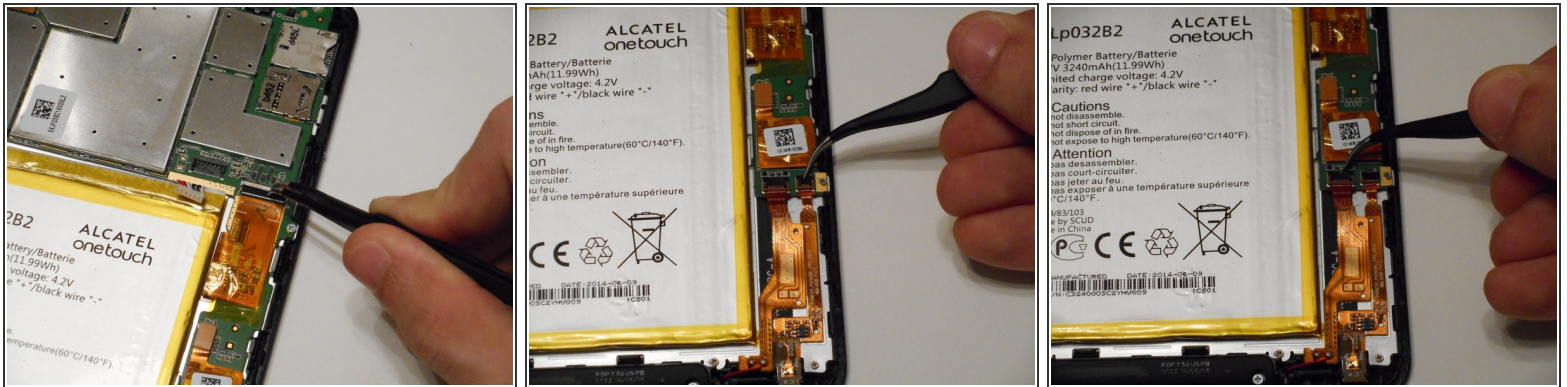
- Using the tweezers, pull the WIFI Antenna away from the motherboard and the wireless card.

Step 8



- With each of the antenna ends disconnected, you can pull out the full antenna. There will be 3 pieces of tape wrapped around the antenna and stuck beneath the battery. They may be a bit difficult to remove but not impossible.

Step 9 — Motherboard



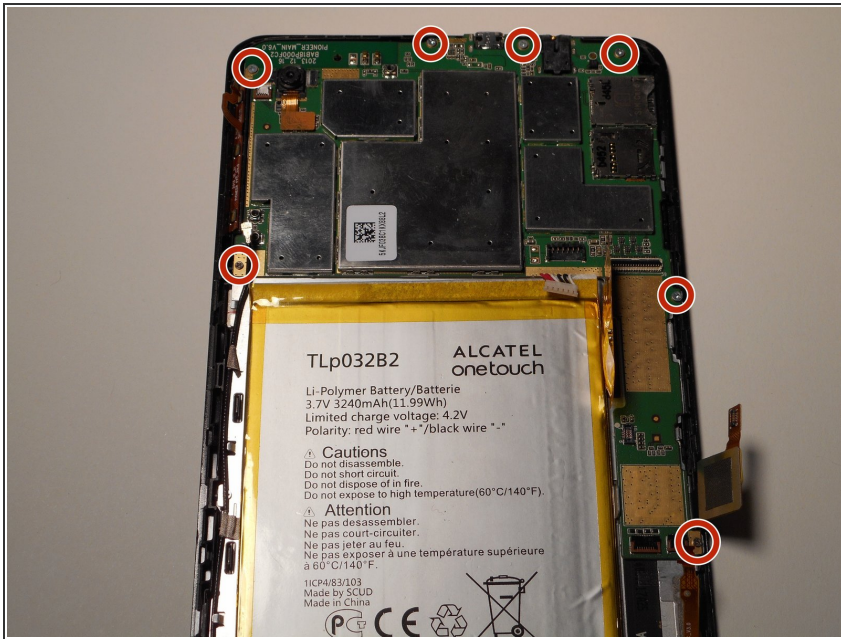
- We now need to remove 3 ZIF connectors, all located in the bottom right quadrant. The order they are disconnected doesn't matter.

Step 10



- Disconnect the ribbon cable and move it out of the way of the motherboard.

Step 11



- Using a PH00 screwdriver to remove these seven 2mm screws and place them in a safe spot where you won't lose them.

Step 12



- With the screws removed, you can now remove the motherboard. Using tweezers or just your fingers, pick up the motherboard and place it to the side.