



Alcatel One Touch Pop 7 Wifi Antenna Replacement

This guide will show you how to remove the WIFI Antenna.

Written By: Riley Cooper



INTRODUCTION

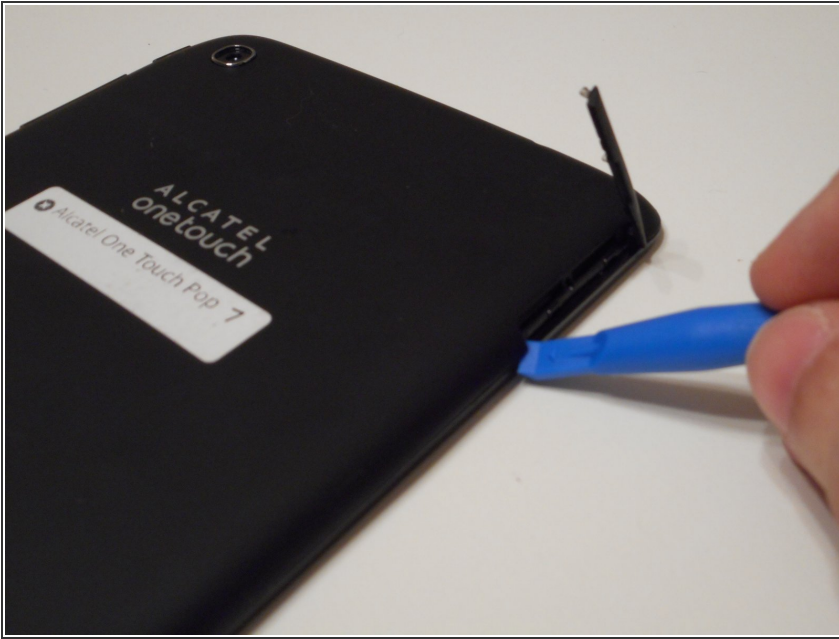
If you are experiencing a problem connecting to either WIFI or cellular data, you could have a faulty WIFI antenna. This guide will show you the simple steps to replace it.



TOOLS:

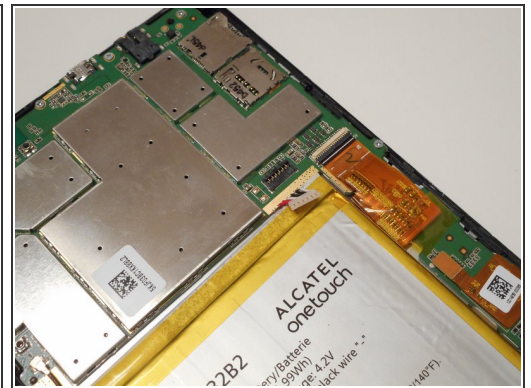
- [Tweezers](#) (1)
 - [iFixit Opening Tools](#) (1)
-

Step 1 — Volume Button Assembly



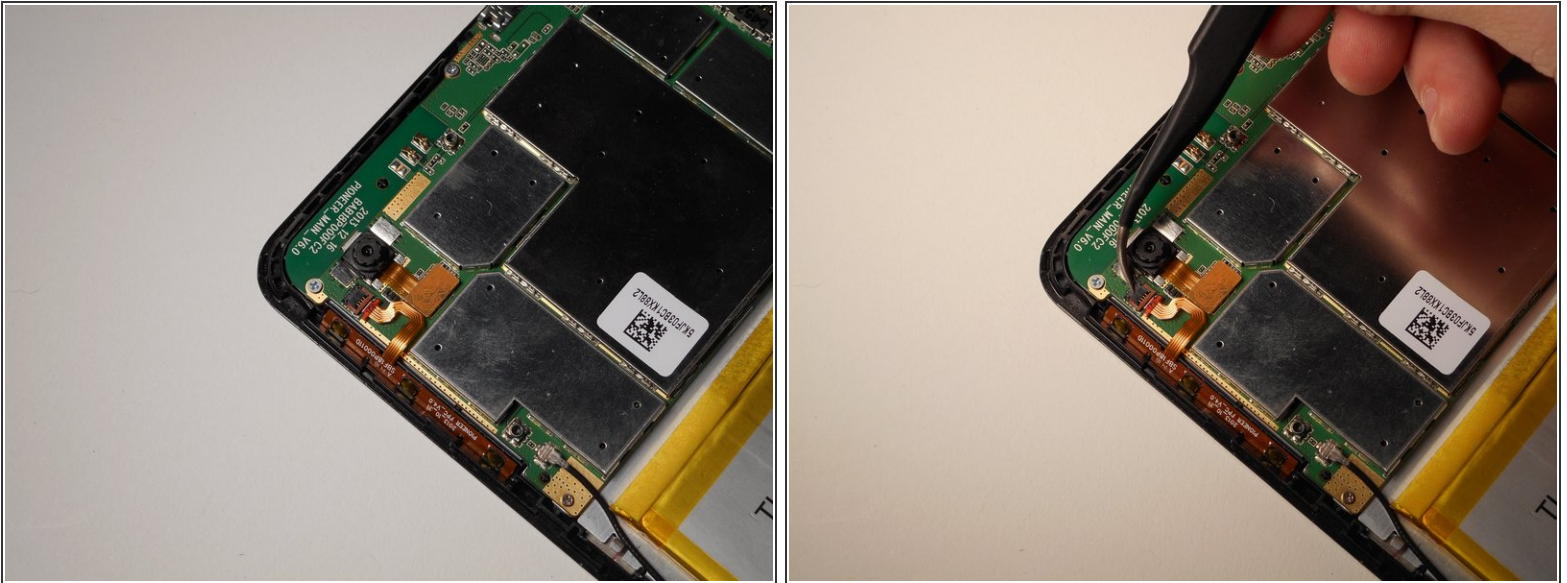
- Begin working by using the plastic opening tool to remove the back cover of your Alcatel One Touch Pop 7. Opening the flap as shown in the picture will give you an easier start.

Step 2



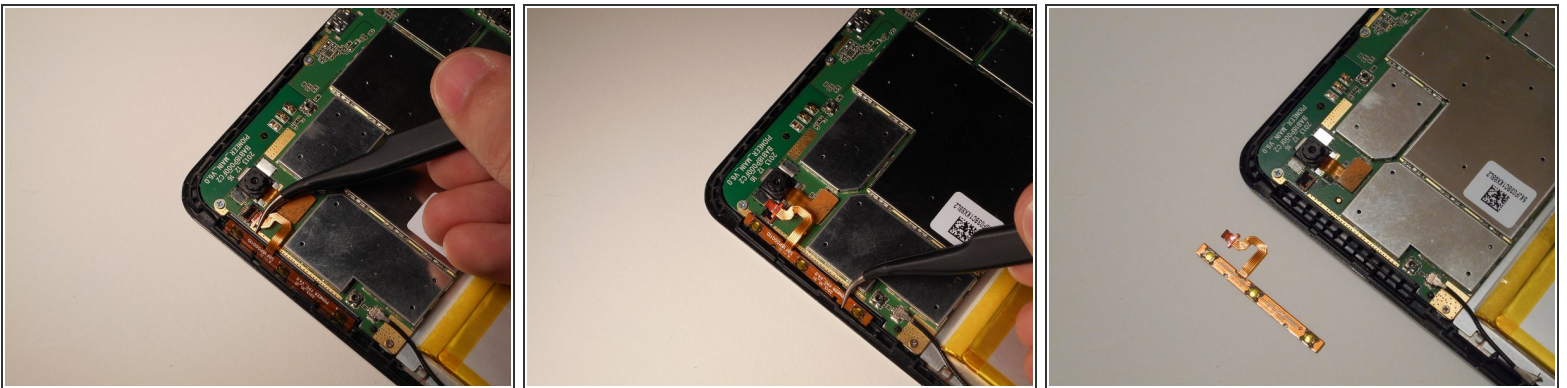
- With the back cover removed you will now want to disconnect the battery. Use the tweezers and gently pull the wires as shown in the second picture.

Step 3



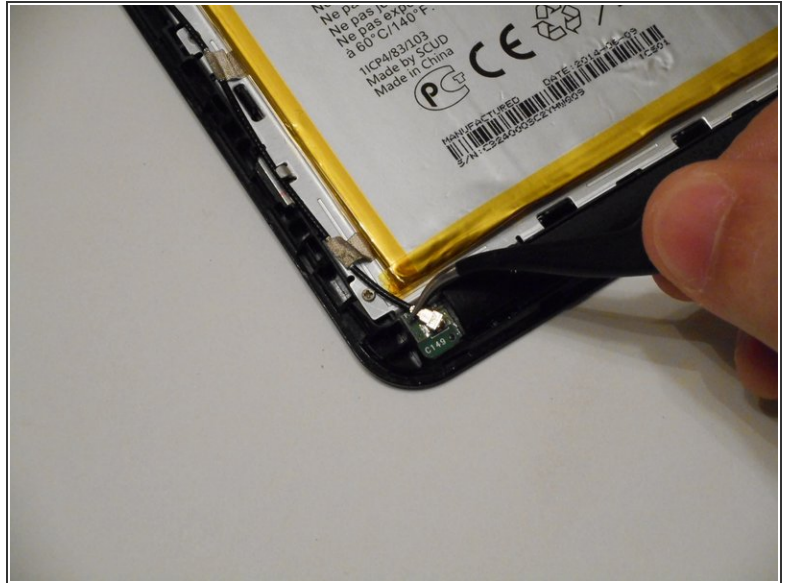
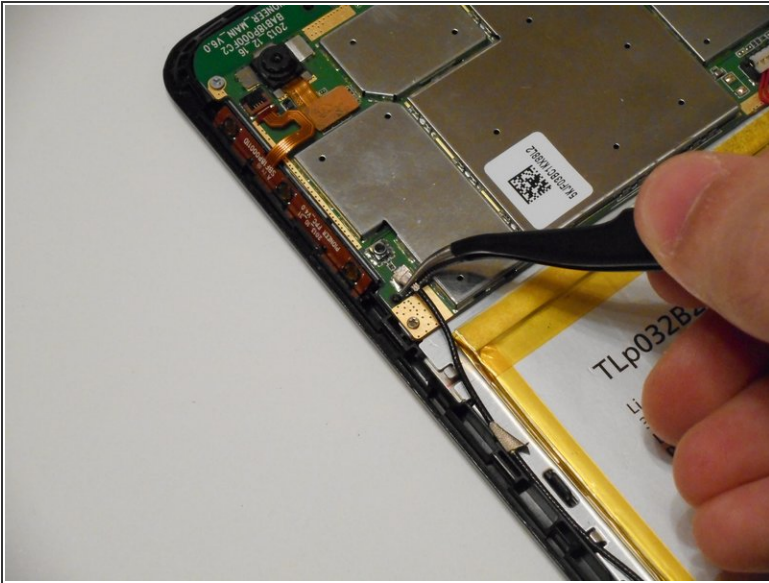
- The volume button assembly is in the top left corner of the tablet. To begin, you will have to pull the small black tab of the ZIF connector, shown in the second picture, to be able to remove the assembly. The tab is on a hinge so it should not be pulled off completely.

Step 4



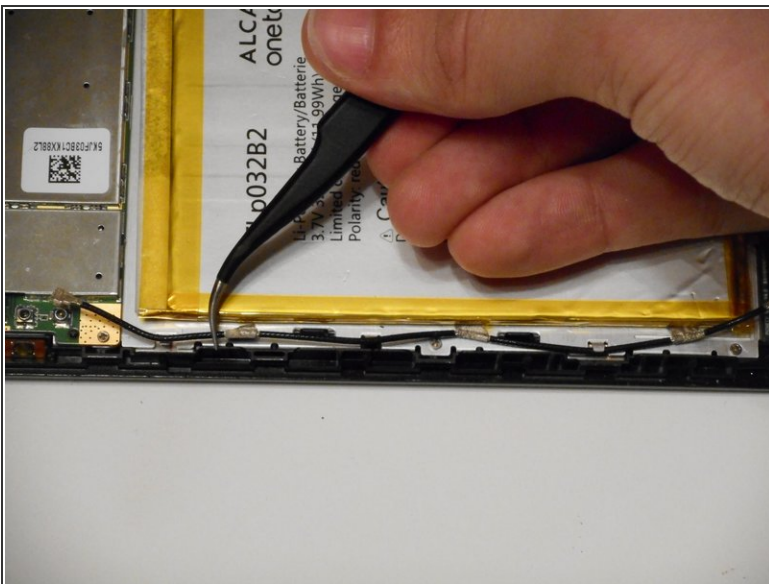
- Pull the copper ribbon cable from the tab. It should be easily removed, as the ZIF connector is the only thing holding it in place.
- Next up is removing the volume button assembly. Another easy removal, simply pull the assembly away from the device and you're done with the removal process.

Step 5 — WIFI Antenna



- Using the tweezers, pull the WIFI Antenna away from the motherboard and the wireless card.

Step 6



- With each of the antenna ends disconnected, you can pull out the full antenna. There will be 3 pieces of tape wrapped around the antenna and stuck beneath the battery. They may be a bit difficult to remove but not impossible.

To reassemble your device, follow these instructions in reverse order.