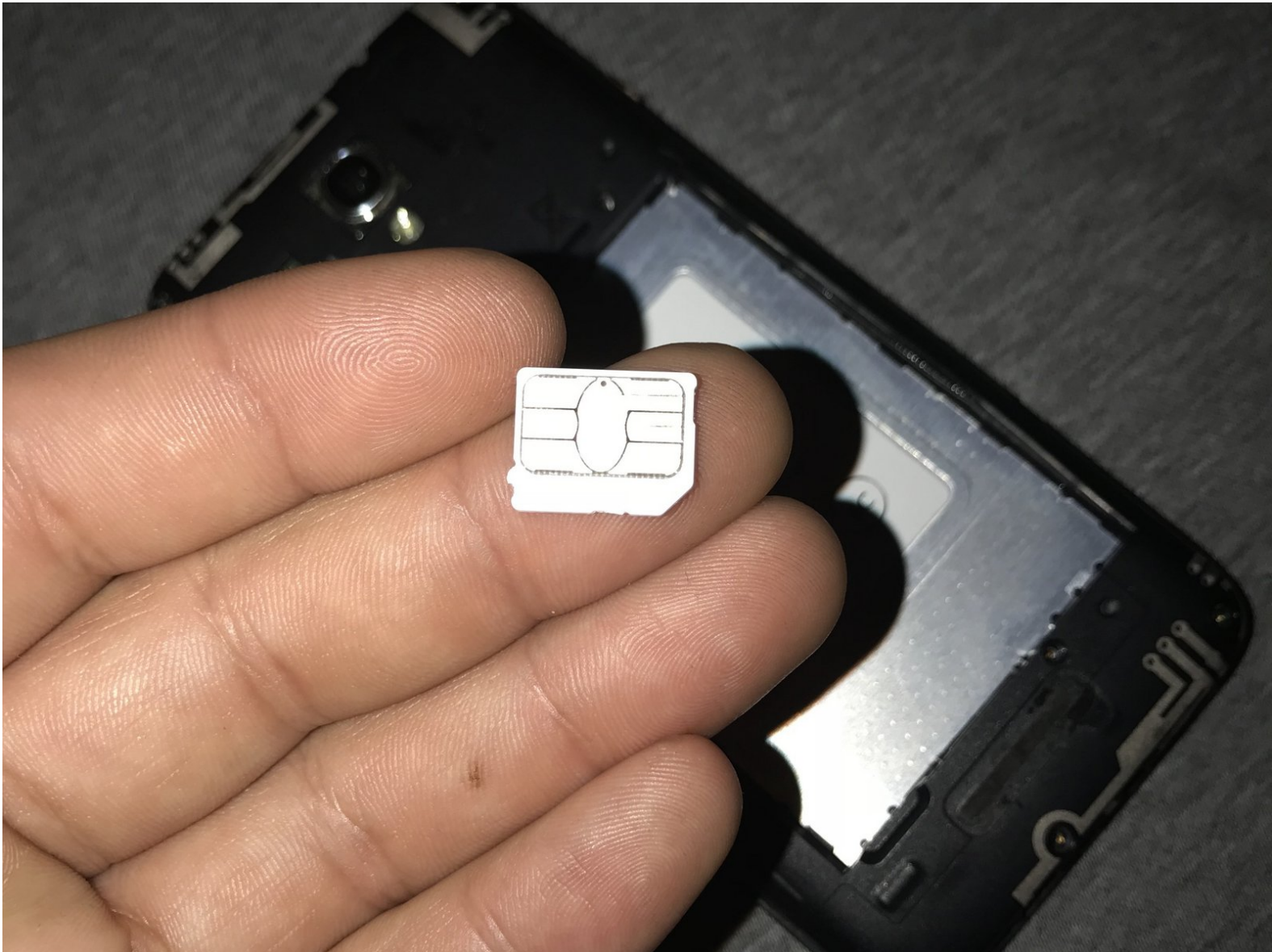




Alcatel OneTouch Elevate SD Card Replacement

Expand your memory and increase your device's speed by replacing the SD card.

Written By: Jorge



INTRODUCTION

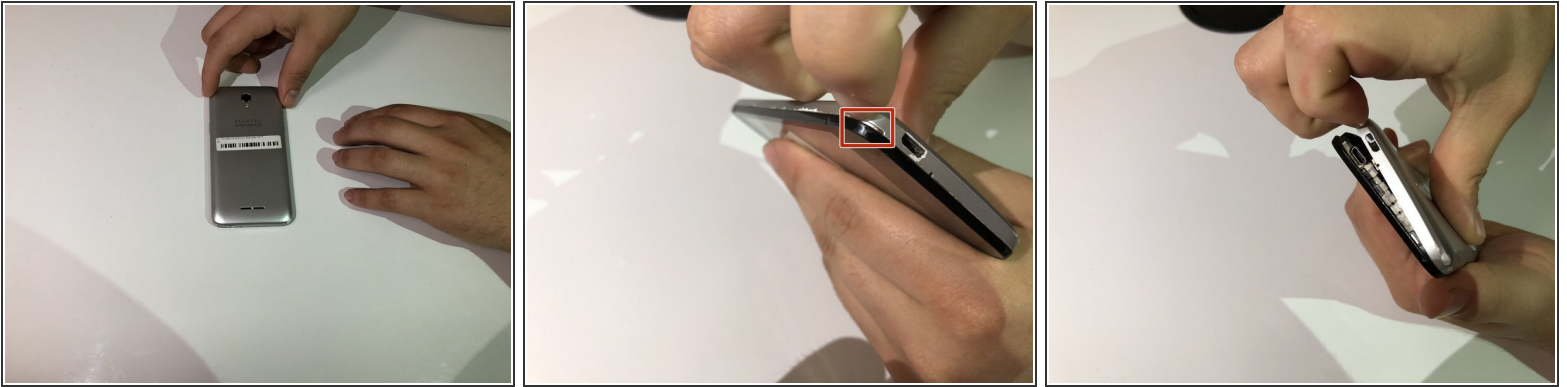
This guide will walk you through the steps on changing your phones SD card with guided pictures to help at every stage



PARTS:

- [Micro SD card](#) (1)
-

Step 1 — Battery



- Locate the small indent on the lower left corner.
- Use your fingers or a small plastic opening tool to lift the back cover off.

Step 2



- Locate the indent between the battery and your phone.
- Use your finger or a small plastic opening tool to lift the battery free.

Step 3 — SD card



- Locate the SD card slot at the top left of the phone.
- If an SD card is not present, you can skip to step 4

Step 4



- The SD card will have an indent at the top, use this to carefully pull the card from the slot.

Step 5



- Grab the new SD card making sure not to touch the metallic area.
- With the metallic patch facing down, insert the card into the slot.

To reassemble your device, follow these instructions in reverse order.