



Alcatel Pixi Theatre Motherboard Replacement

This guide will allow you to replace a faulty motherboard in your Alcatel Pixi Theatre.

Written By: Noah Elliott



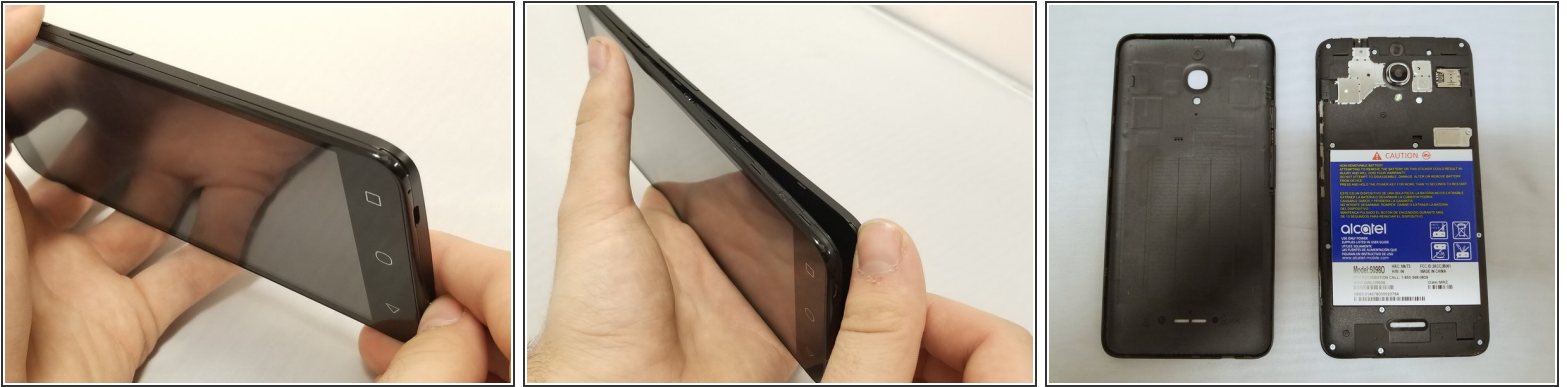
INTRODUCTION

A faulty motherboard can cause a host of problems with your phone, including touch screen failure, connection difficulties, and freezing. In this guide, we'll show you how to take apart your phone in order to extract and replace the motherboard.

TOOLS:

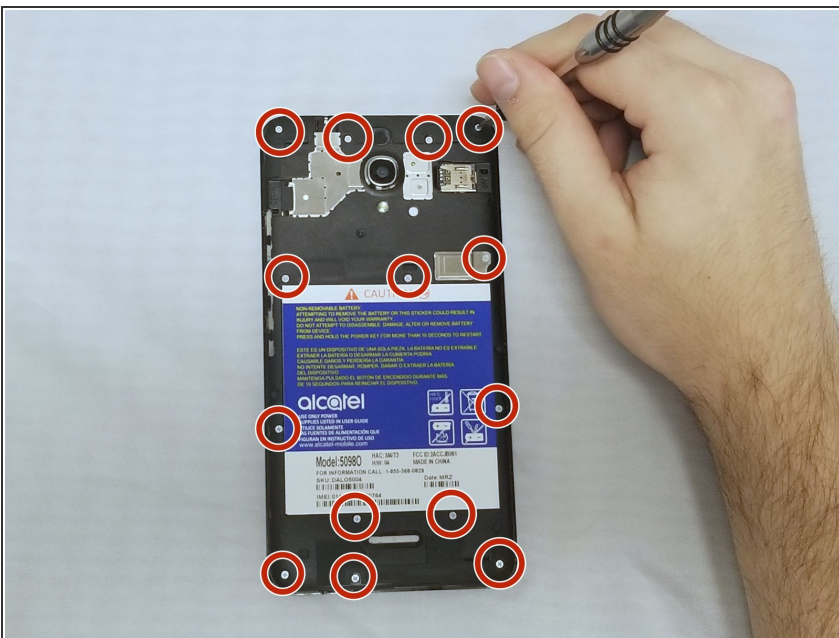
- [Spudger](#) (1)
 - [Phillips #000 Screwdriver](#) (1)
 - [Jimmy](#) (1)
-

Step 1 — Battery



- Take off the case by flipping the phone over and wedging your finger in the notch on the bottom edge. Pry up until you hear the clicking and the edge releases. Continue to pry the case up, moving around the perimeter of the phone.
- It should pop off in various places around the perimeter of the phone, and then come off easily.

Step 2



- Using a Phillips #000 screwdriver, remove the fourteen 3mm screws that connect the housing and the battery.

Step 3



- Remove the metal bracket covering the battery connector flex cable. Now that it's unscrewed, it should come out easily.

Step 4



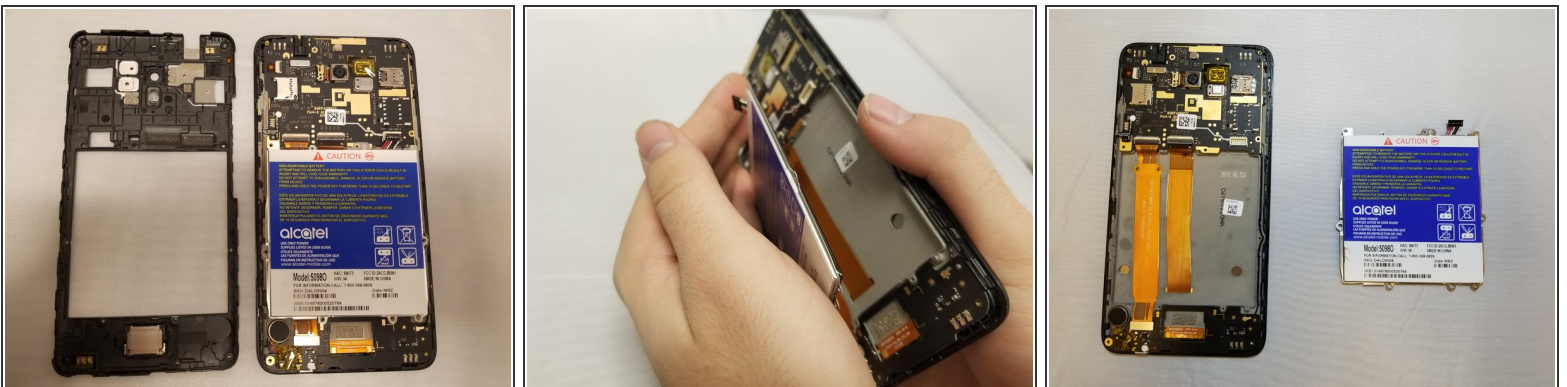
- Disconnect the battery connector flex cable by sliding the black spudger under the wires and carefully prying up the entire terminal casing.

Step 5



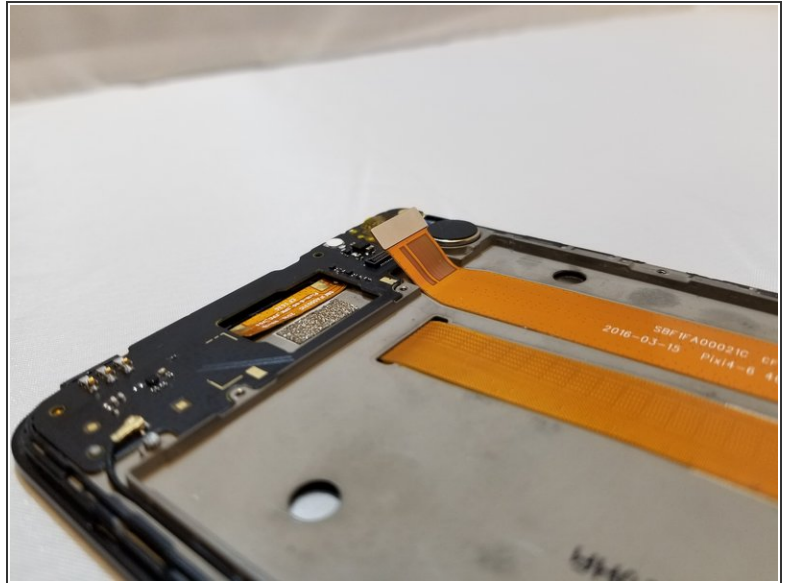
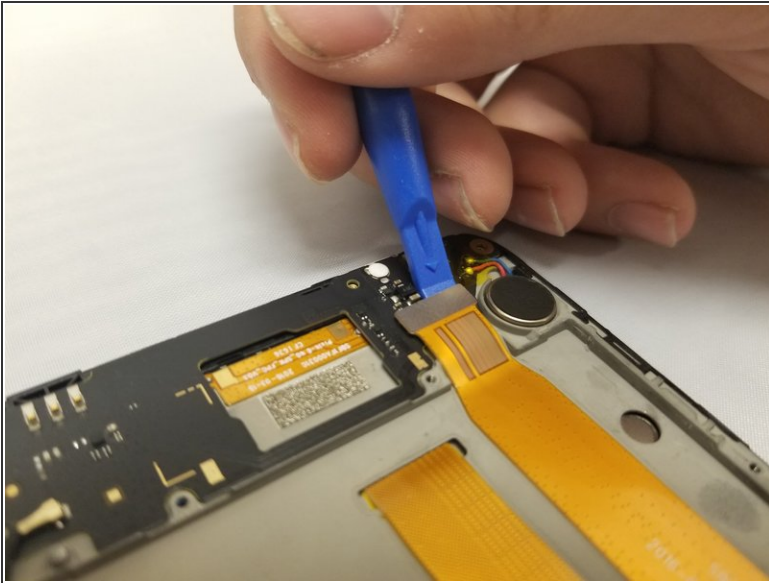
- ⚠ Be careful not to insert the Jimmy too far into the phone when prying the housing apart; if you do, you may damage the motherboard inside.
- ⚠ Once removed from the rest of the phone, the sides of the housing are flimsier than the top and bottom. Be careful not to bend the housing when taking it off.
- Starting at the top left corner and moving around the perimeter of the phone, insert the Jimmy between the housing and the phone and gently pry it up.

Step 6



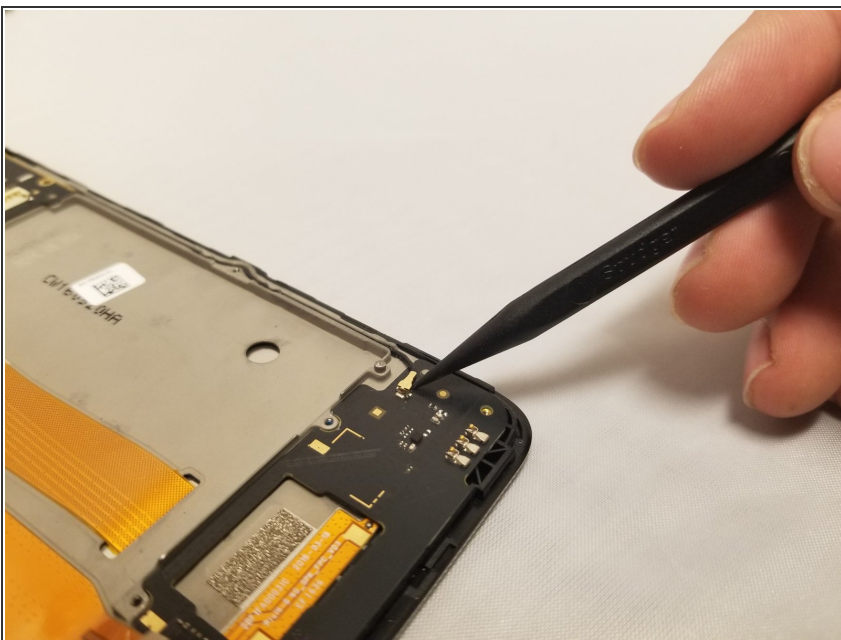
- Remove the blue battery by lifting it straight up, or by gently turning the phone over into your palm and catching the battery as it comes out.

Step 7 — USB charging port



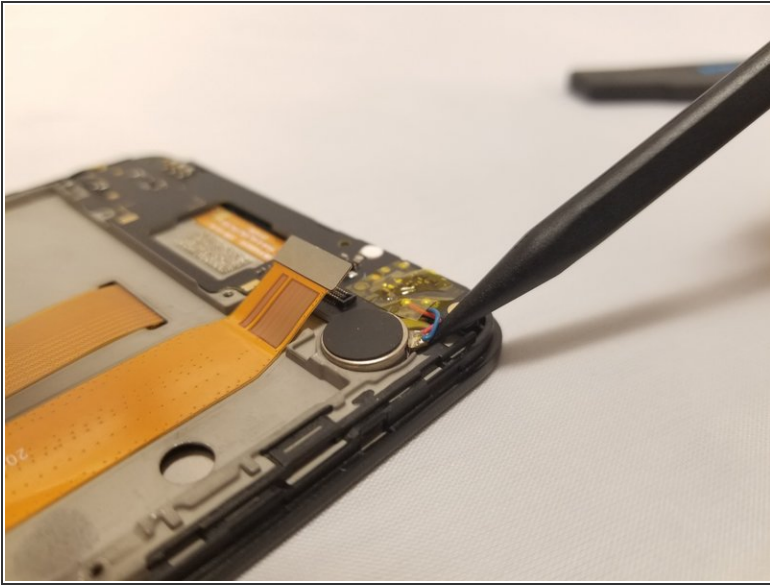
- Turn the phone so the top is facing you. The board the USB charging port is attached to is on the bottom.
- Disconnect the other side of the outer orange ribbon cable by locating the socket terminal at the base of the phone and prying it up using the blue spudger.

Step 8



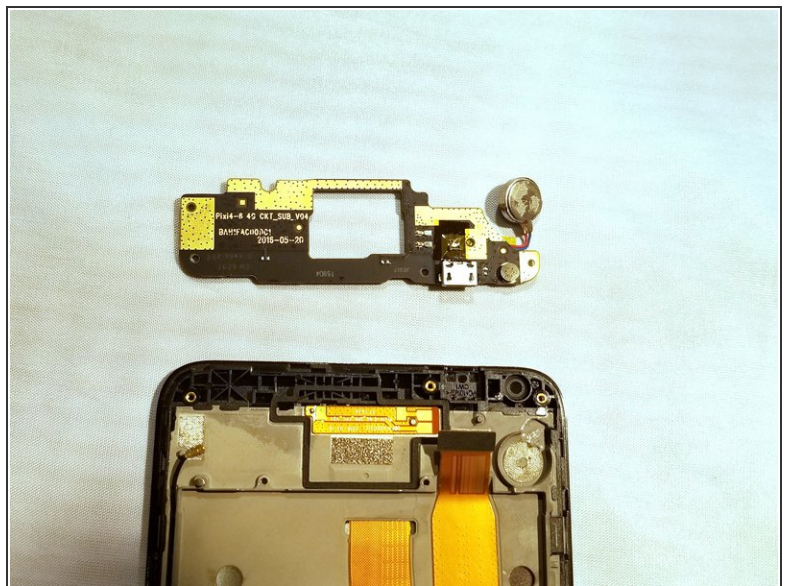
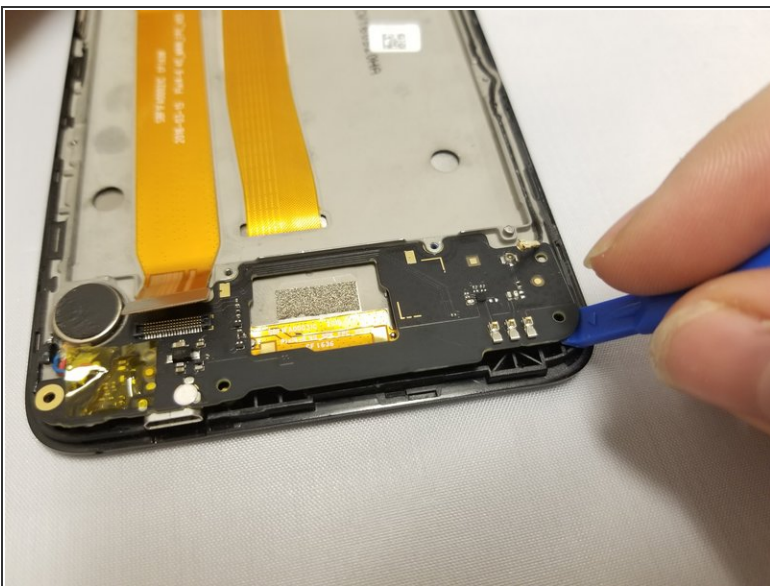
- Disconnect the antenna flex cable by gently prying up the golden connection with the black spudger.
- Slide the pointed end gently under the socket until it releases and hangs loose.

Step 9



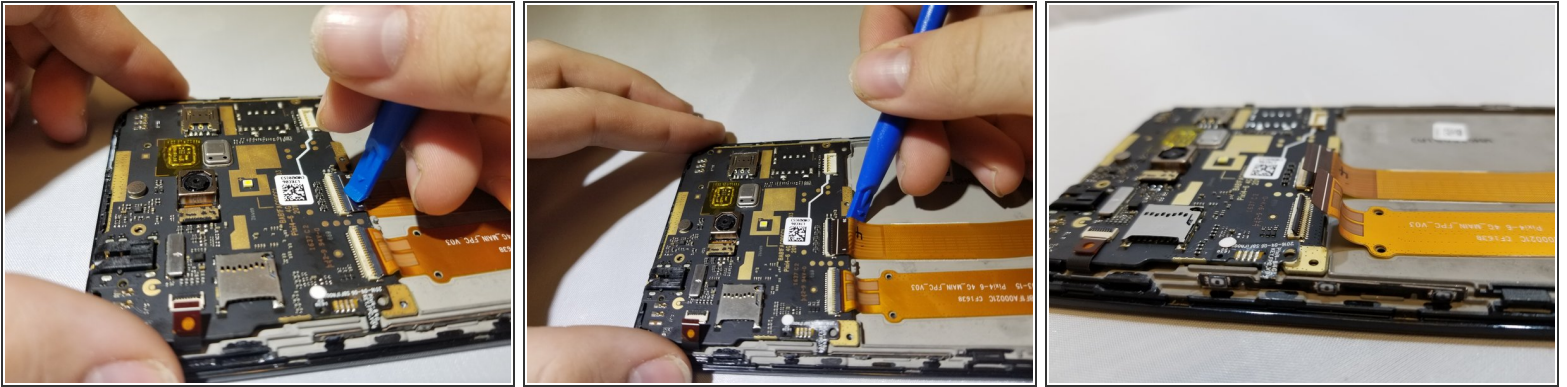
- ⚠ Be sure that you're reaching down far enough into the crack before you begin prying the vibrator up, or you could break it.
- Carefully pry up the vibrator with the black spudger, being mindful of its connecting wires. Do not disconnect the vibrator from the board.

Step 10



- Using the black spudger, pry off the board the USB charging port is attached to.

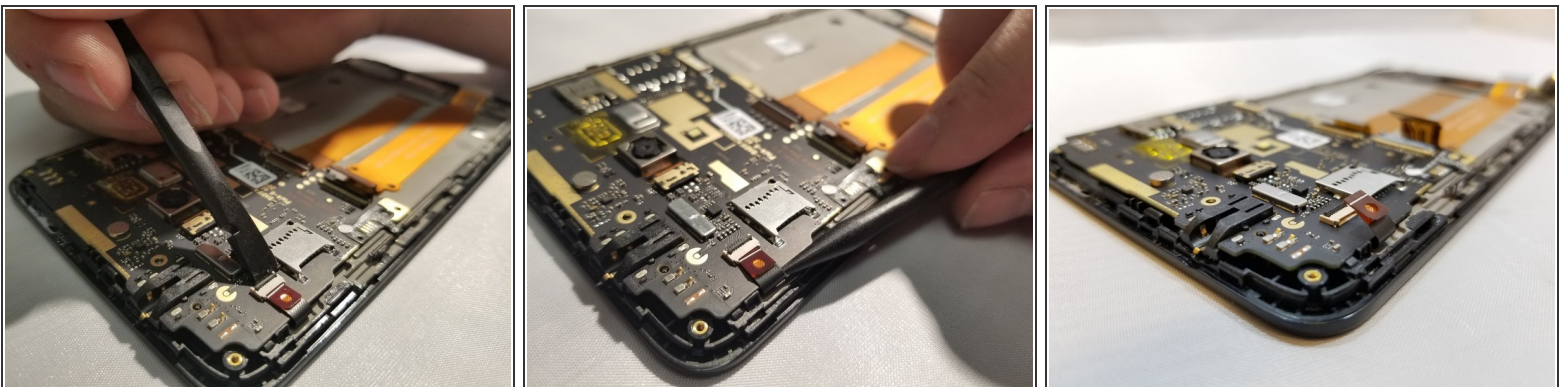
Step 11 — Motherboard



i When disconnecting the ribbon cables from the clamps, do not peel the cables up. They're glued down.

- Turn the phone so the volume buttons are facing you.
- Disconnect the orange ribbon cables from the motherboard. Flip the black switches with the blue spudger.
- Gently pull the ribbons away from the clamp by lifting them away from the connection with the blue spudger. It should release and hang loose.


Step 12



- Disconnect the small black flex cable by flipping its switch with the flat side of the black spudger.
- Using the pointy side of the black spudger, gently move the cable away from the connection without pulling on it.

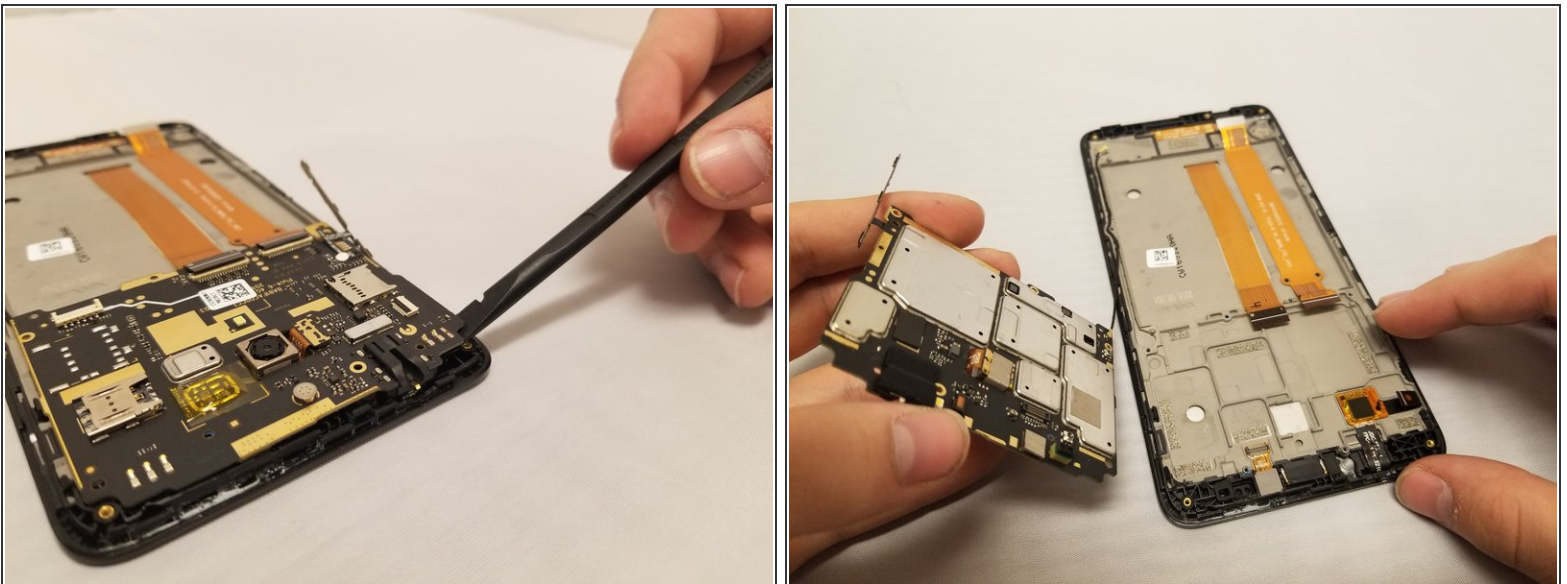
Step 13





 The volume buttons are attached with adhesive. Make sure you're prying them out as gently and evenly as possible to avoid damage.

- Remove the volume buttons on the side by inserting the Jimmy between the buttons and the phone and gently prying them outward. Do not remove the volume buttons from the motherboard.

Step 14



 Be wary of remaining adhesive from the volume buttons when removing the motherboard.

 Start prying from the top left of the phone to minimize the possibility of damage.

- Gently pry up the motherboard with the black spudger to remove it.

Step 15



- Gently lift the motherboard up with your hand and slowly turn it over so the antenna's connection on the bottom is visible.
- Disconnect the antenna from the motherboard by putting the black spudger under the connection and gently lifting the cable upwards.

To reassemble your device, follow these instructions in reverse order.