



# Alcatel Pop 4 Plus Charging Port Replacement

The correct way to replace the Charging Port on an Alcatel Pop 4 Plus.

Written By: Anna Gongre



---

## INTRODUCTION

Caution: Lead Contaminate

Please use extreme caution when handling a Soldering tool. Tool will produce extreme heats.

If your phone is not charging correctly or you notice that your charger slides in and out without staying in, you may need to replace your charging port.

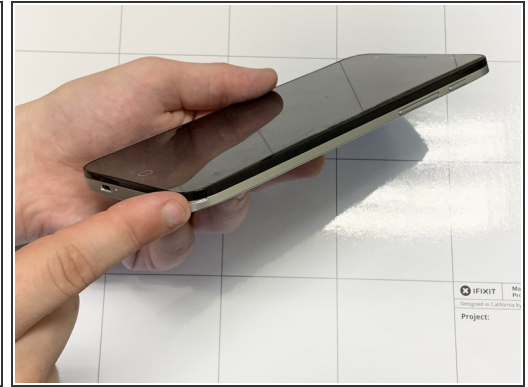
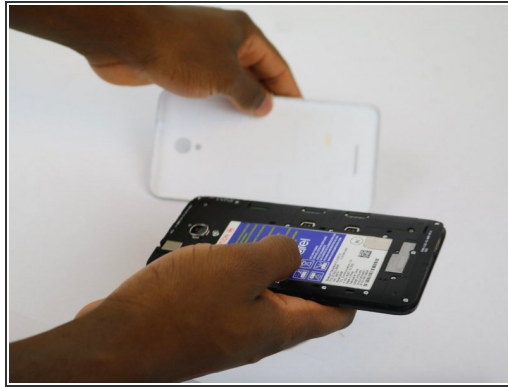
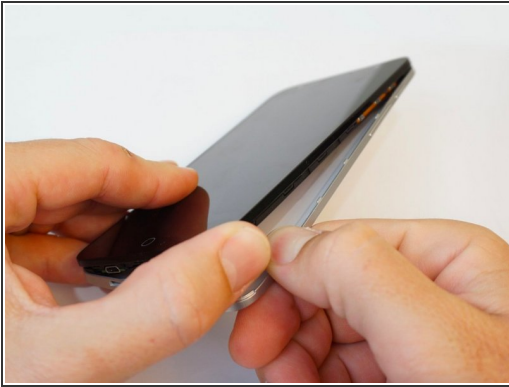
For more information on soldering connections, please read the [How to Solder and Desolder Connections guide](#).



### TOOLS:

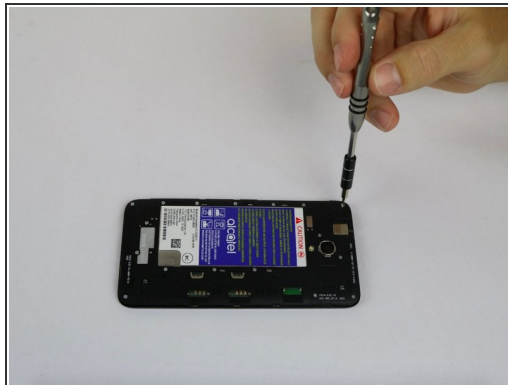
- [Phillips #000 Screwdriver](#) (1)
  - [Spudger](#) (1)
  - [Curved Needle Nose Pliers](#) (1)
  - [Soldering Iron](#) (1)
  - [Solder](#) (1)
-

## Step 1 — Charging Port



- Begin by removing the back of the phone. Press your nail or a thin object in the bottom right-hand corner of the phone and gently press to release the back of the phone from the front.

## Step 2



- Remove seventeen 1.2 mm screws from the phone's mid-frame using the Phillips #000 screwdriver.



## Step 3



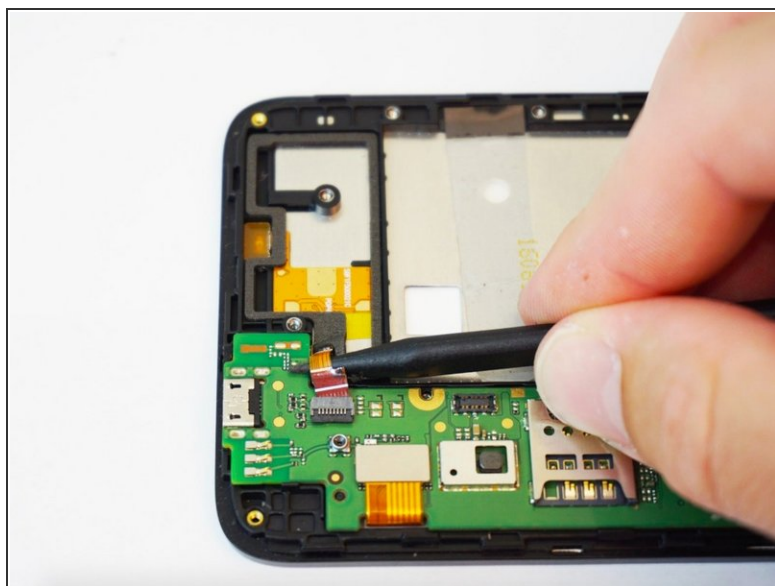
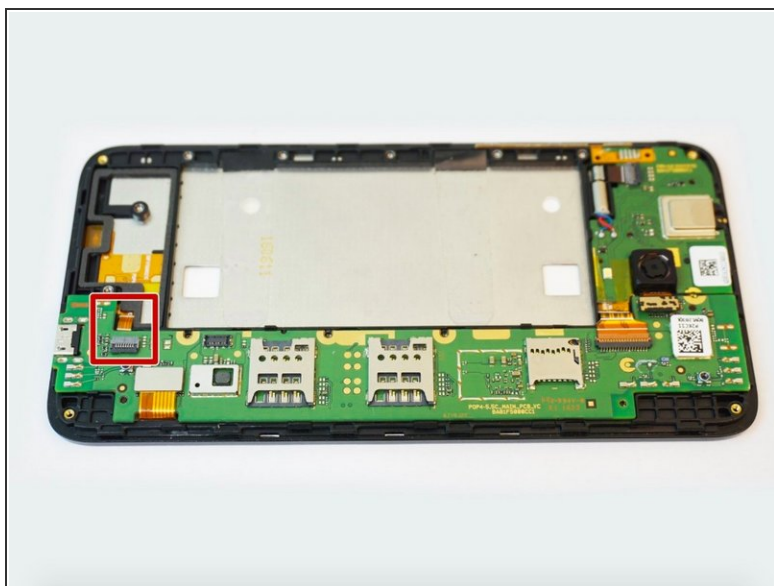
- Once the screws have been taken out, remove the mid-frame protecting the phone's electronics by using a fingernail or tool to pry it off.

## Step 4



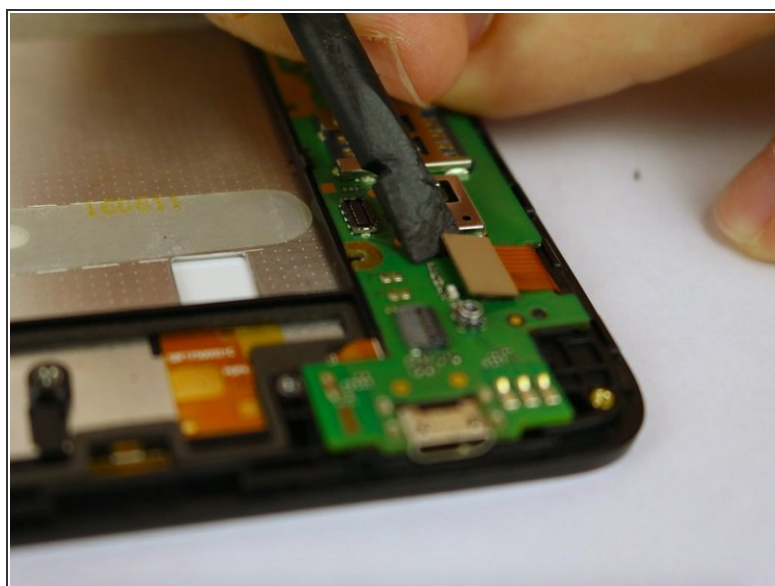
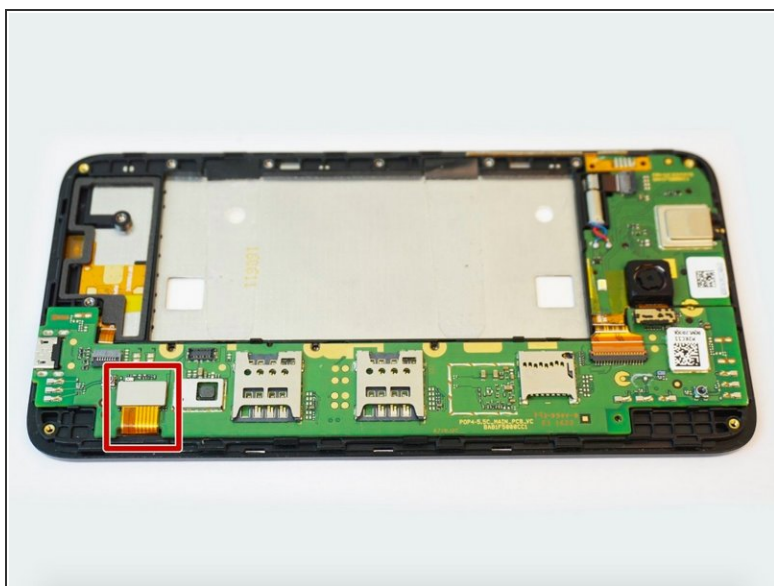
- Disconnect the battery from the motherboard and remove it.

## Step 5



- Unhook the USB ribbon from the motherboard.

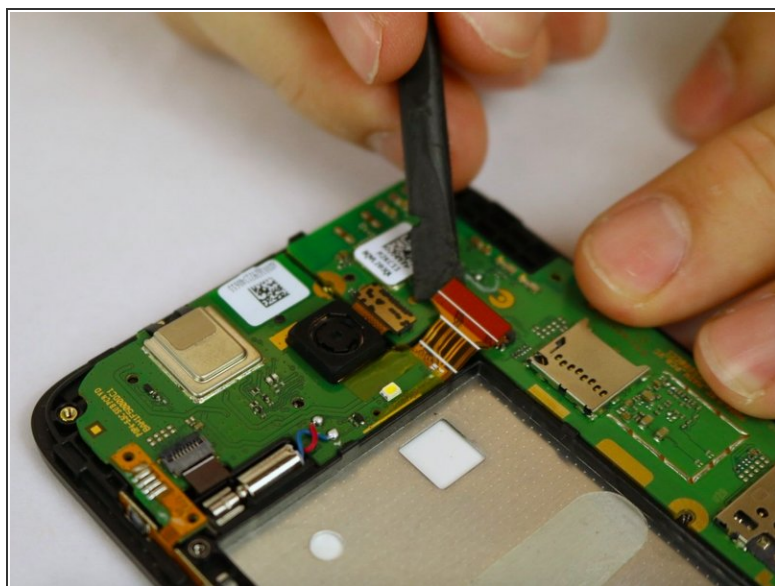
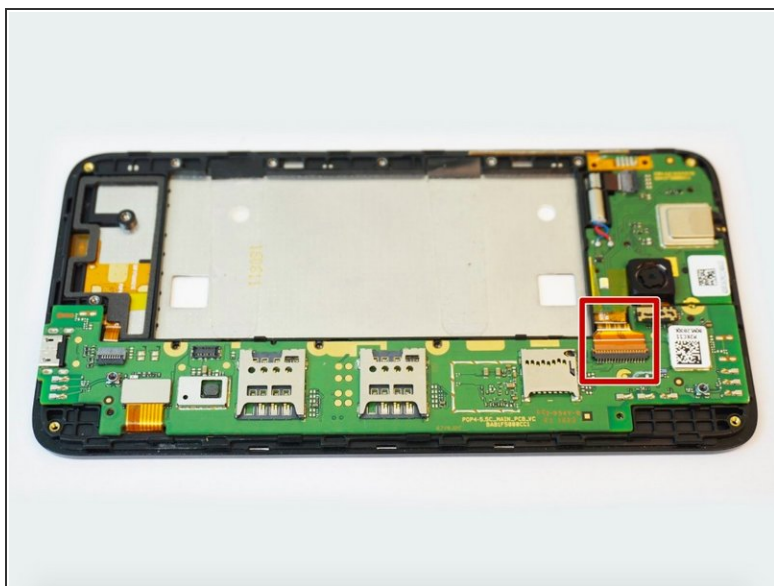
## Step 6



- Disconnect the phone's ribbon cable.

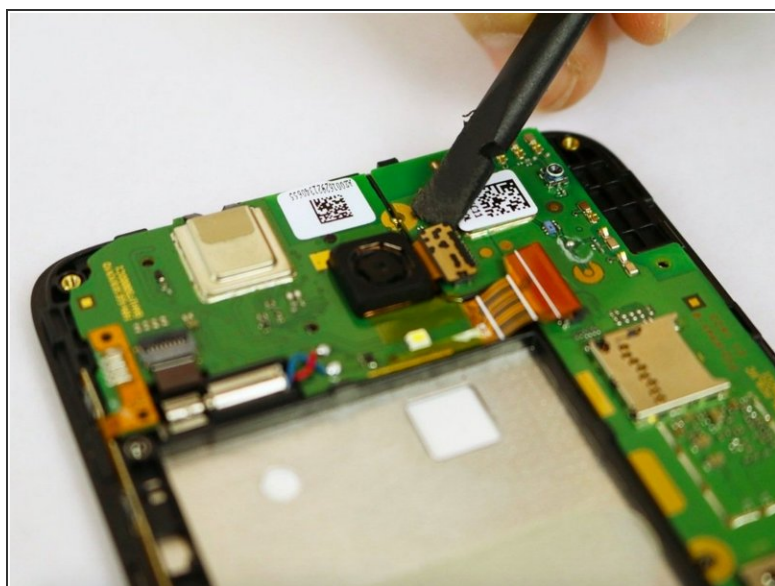
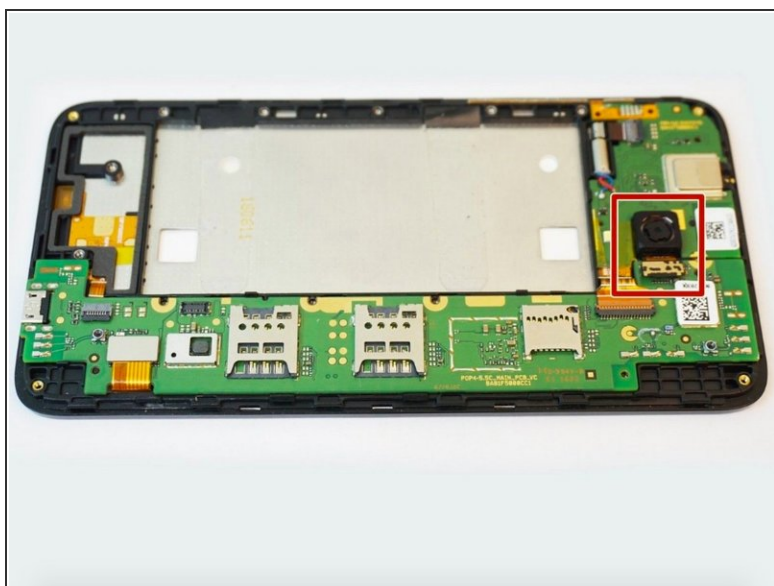


## Step 7



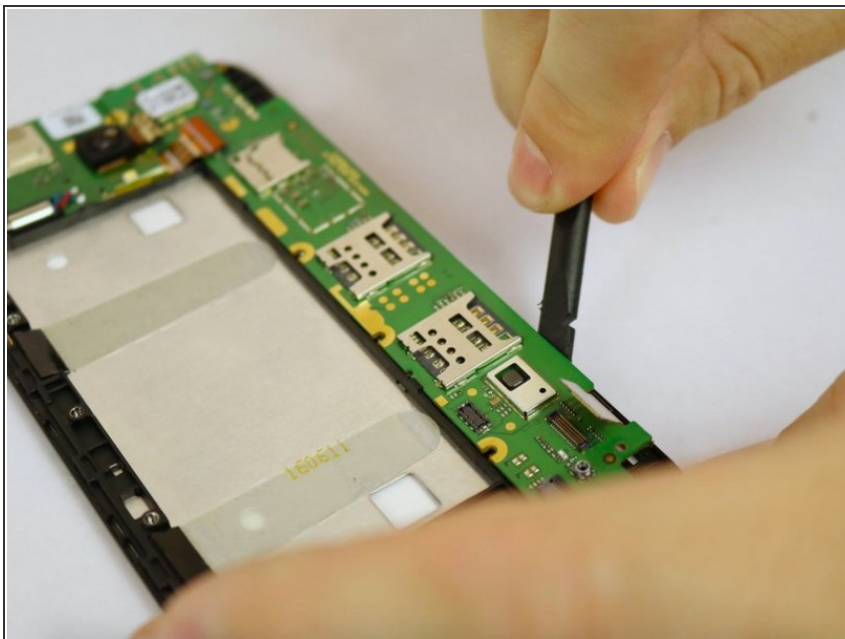
- Disconnect the ribbon cable from the phone

## Step 8



- Remove the phone's rear camera from the motherboard.

## Step 9



- Use the flat end of the spudger to pry off the motherboard.

## Step 10



- On the charging port, heat the four connection points with Soldering tool and remove from prongs.
- ⓘ For more information on soldering, please visit the [How to Solder and Desolder Connections guide](#).

To reassemble your device, follow these instructions in reverse order.