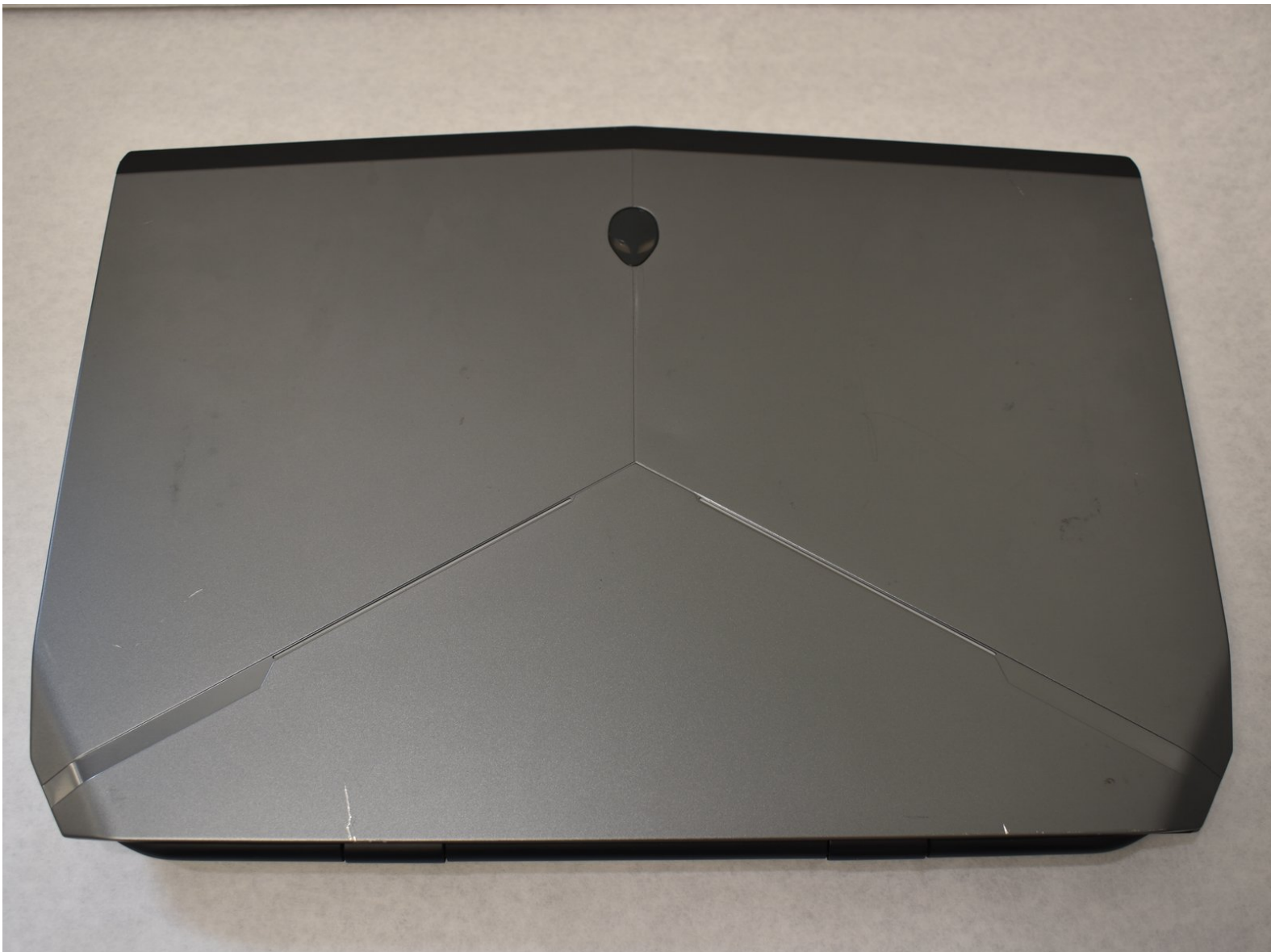




Alienware 15 R2 Battery Replacement

Step by step instructions on replacing the battery of your Alienware 15 R2.

Written By: Nathaniel Evans



INTRODUCTION

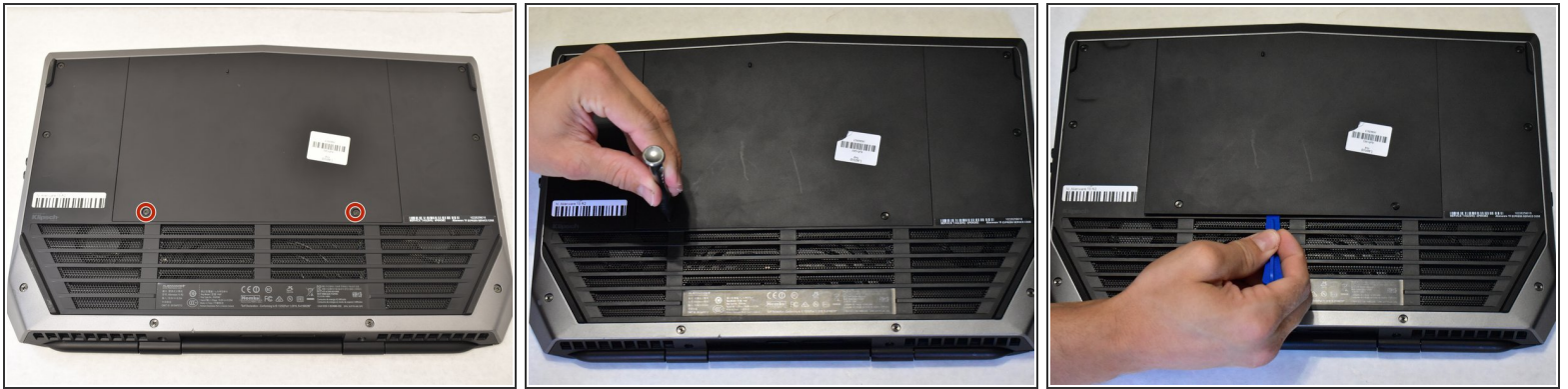
If the battery of your Alienware 15 R2 dies quickly, or fails to charge, you may consider replacing it. This will show you how to do so. When working with computers, always make sure to unplug your computer and ground yourself before reaching inner components so you don't accidentally release an electrical charge into the sensitive technology. The discharge could potentially damage your computer's internals.



TOOLS:

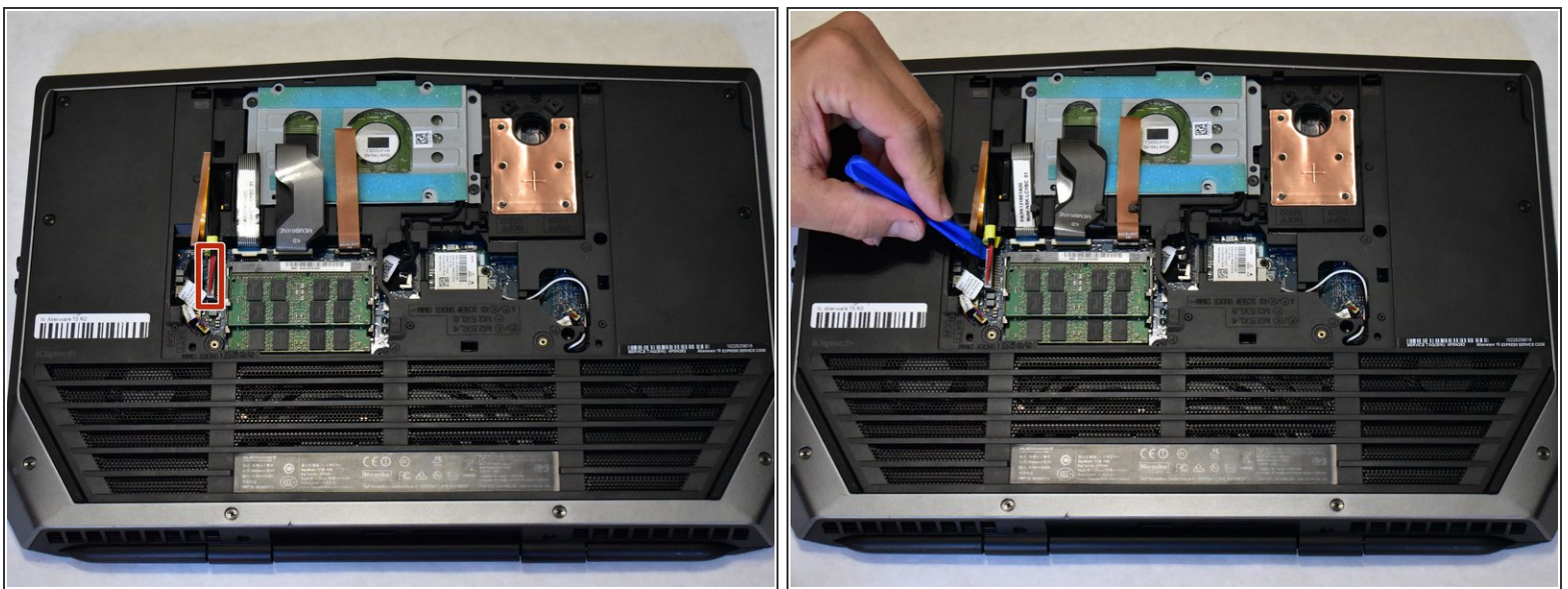
- [Phillips #0 Screwdriver](#) (1)
 - [iFixit Opening Tools](#) (1)
 - [Anti-Static Wrist Strap](#) (1)
-

Step 1 — RAM



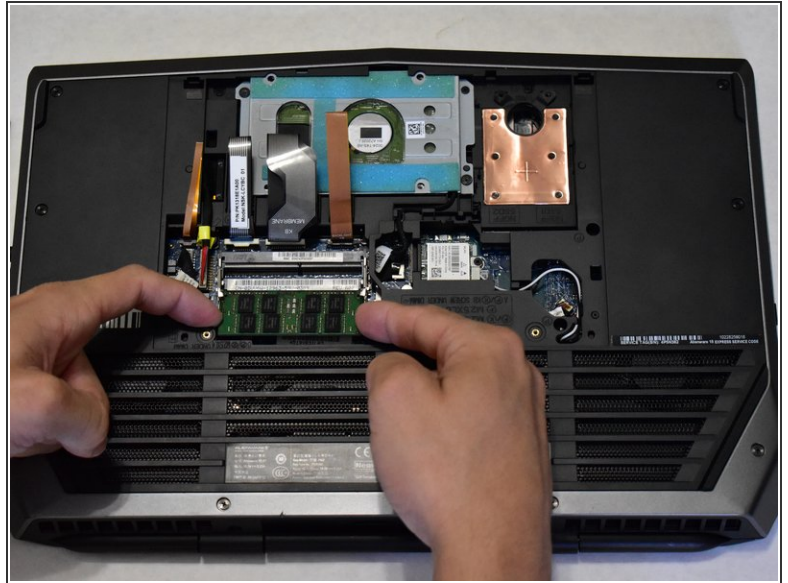
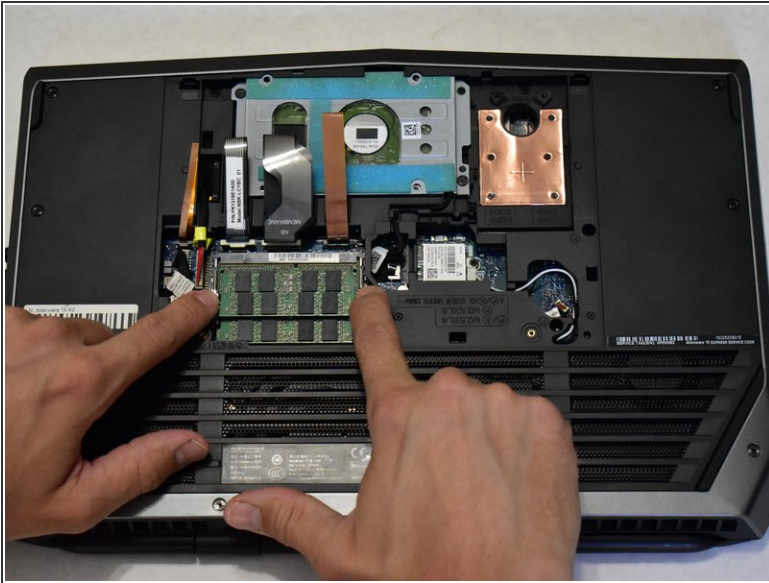
- Place laptop upside down with the hinge facing you, then remove the two 9mm Phillips #0 screws located in the center of the rear panel. Remove the rear panel by using the iFixit opening tool to separate it from the back of the laptop.

Step 2



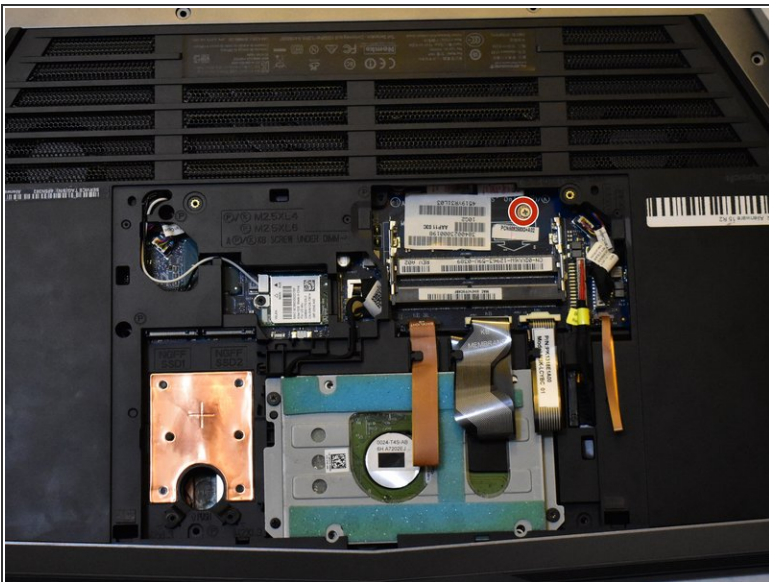
- Use the opening tool to disconnect the battery cable.

Step 3



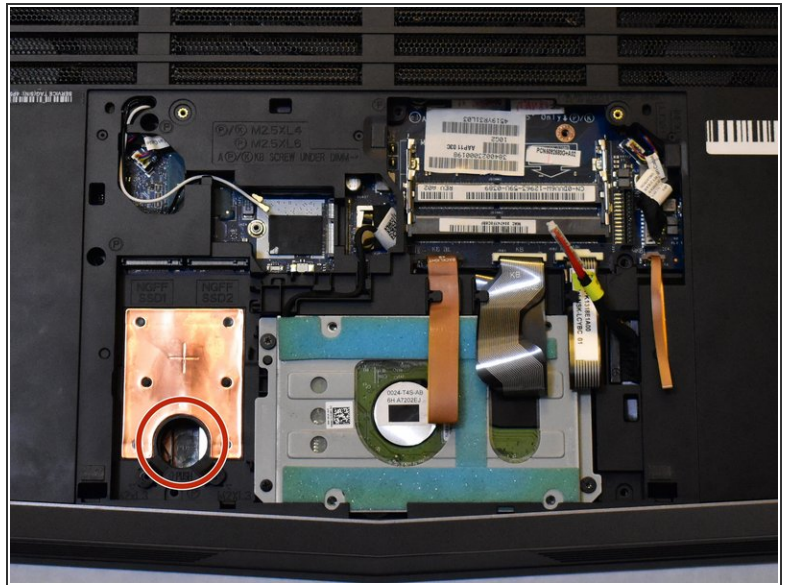
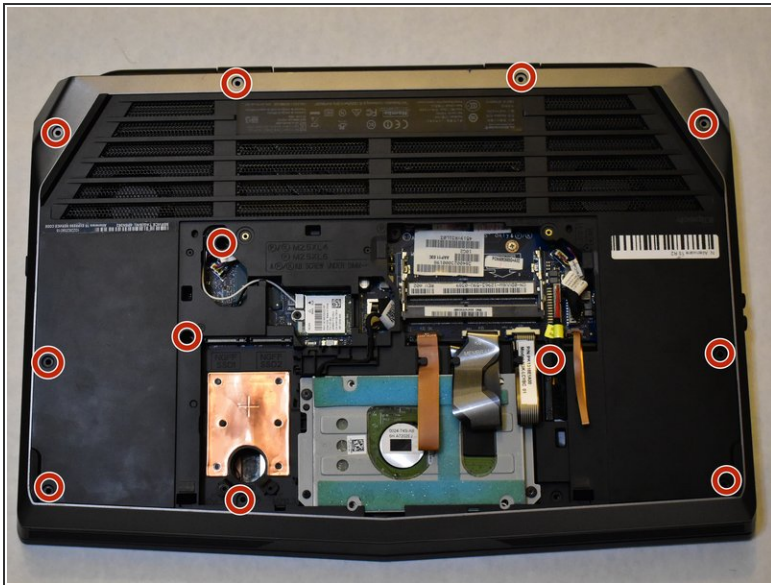
- Find the RAM located near the edge of the computer closest to you. Locate the small latches on either side of the RAM and pull them apart. Gently grasp the RAM stick on either side and pull straight out. Repeat for the second RAM stick.

Step 4 — Battery



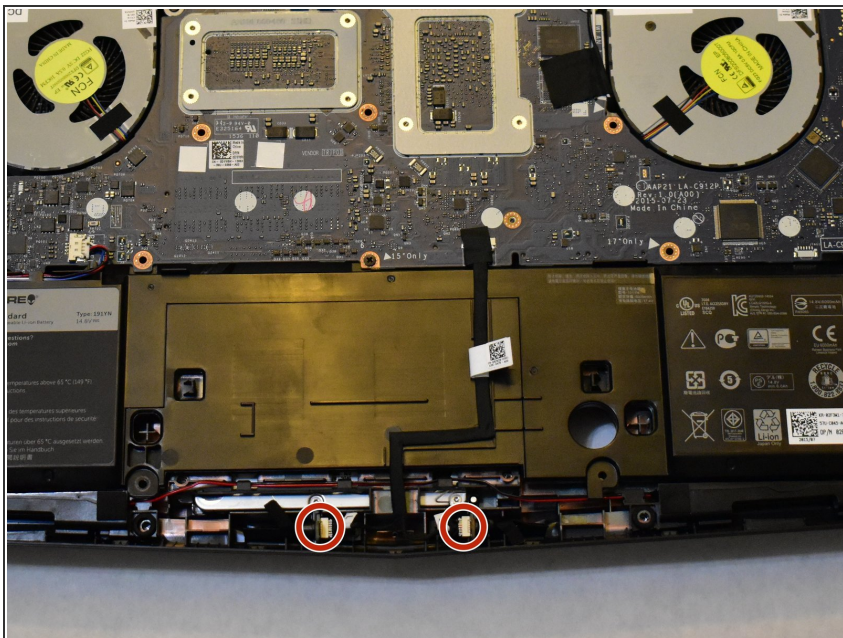
- Using a Phillips #0 remove the small 1X 3mm screw behind where the RAM used to be.

Step 5



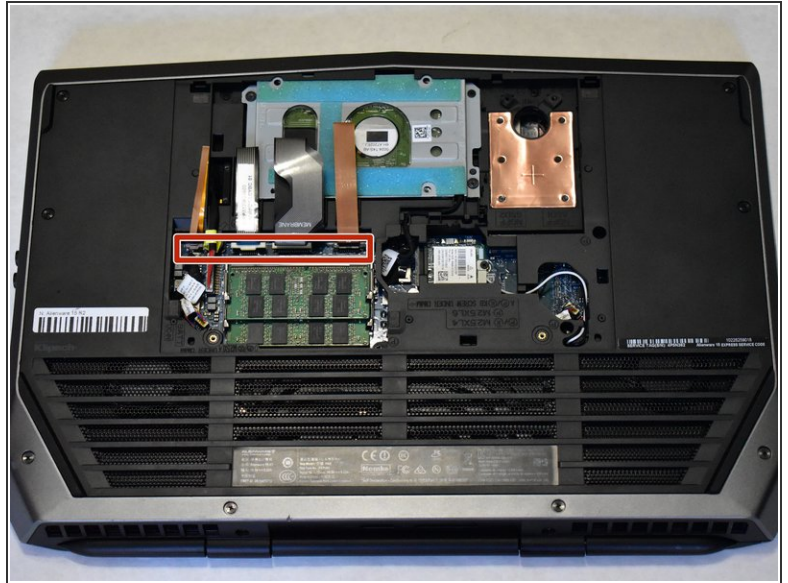
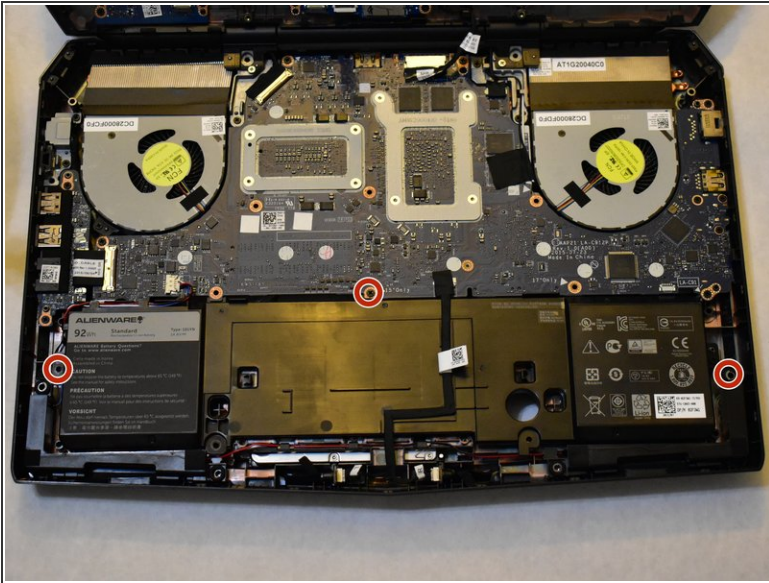
- Remove all screws from the back casing. Press your finger in the hole next to the hard drive to lift the key board. (4X 18mm, 4X 10mm, 4X 6mm)

Step 6



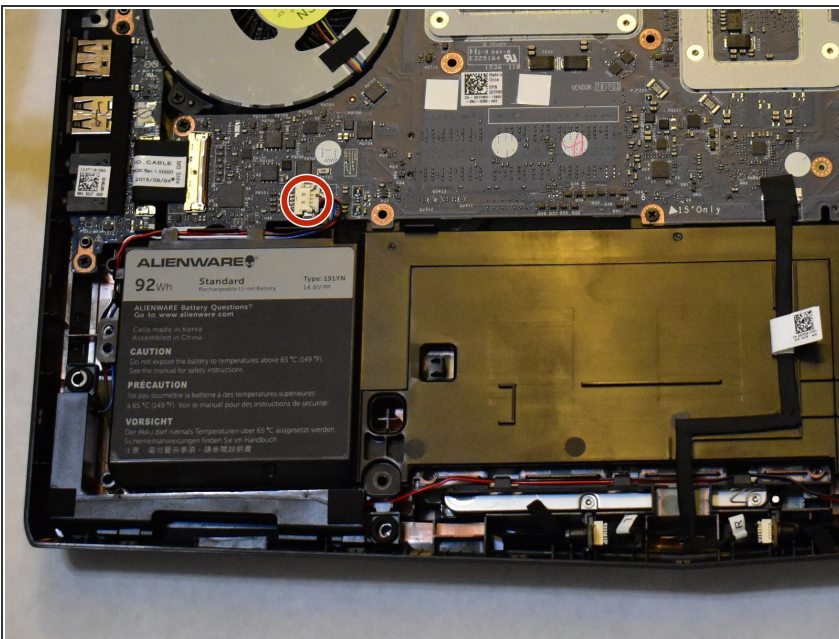
- Disconnect and move aside the left and right wires.

Step 7



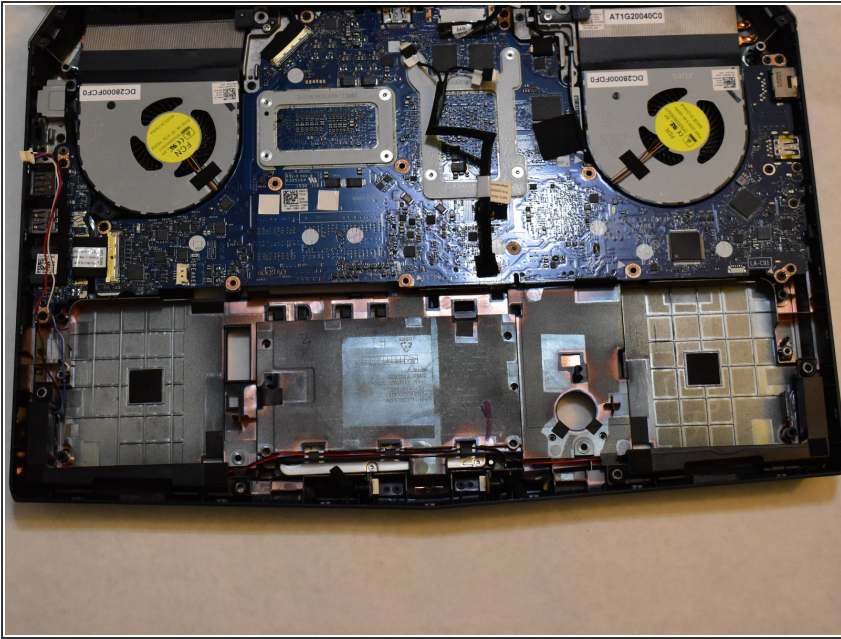
- Using a Phillips #0 remove the screws holding the battery in. (3X 6mm)
- You may also remove the ribbon cables to gain more room to work. (This is not required)

Step 8



- Remove the red, white, blue, and black colored wires connected to the motherboard.

Step 9



- Lift the battery from the front edge and remove.

To reassemble your device, follow these instructions in reverse order.