



# Alienware 15 R2 Hard Drive Replacement

Replacement of Alienware 15 R2 Hard Drive (HDD) storage.

Written By: Jarid Williams



---

## INTRODUCTION

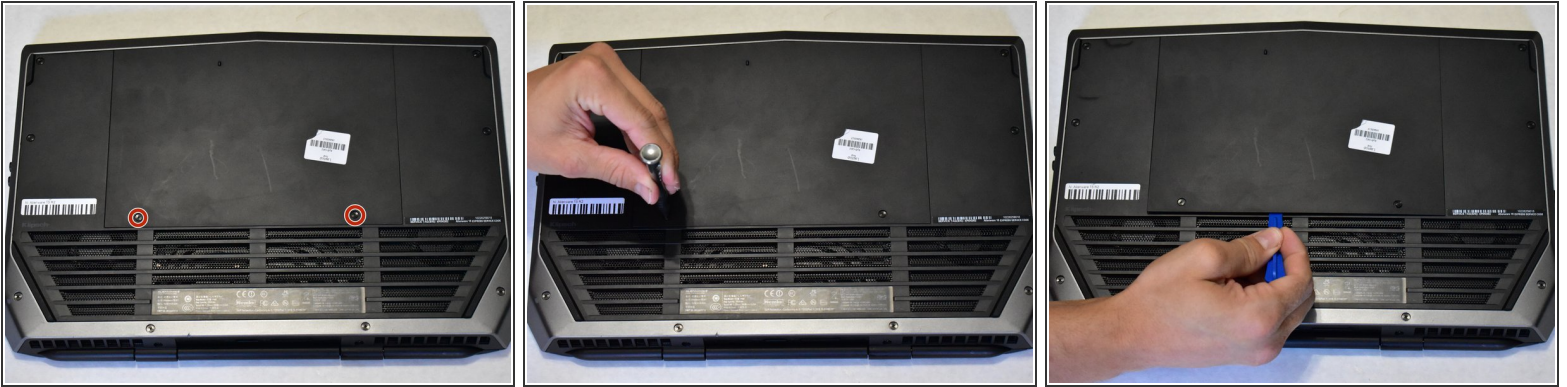
If your hard drive corrupts or you would like to add more storage to your Alienware 15 R2, follow this guide. When working with computers, always make sure to unplug your computer and ground yourself before reaching inner components so you don't accidentally release an electrical charge into the sensitive technology. The discharge could potentially damage your computer's internals.



### TOOLS:

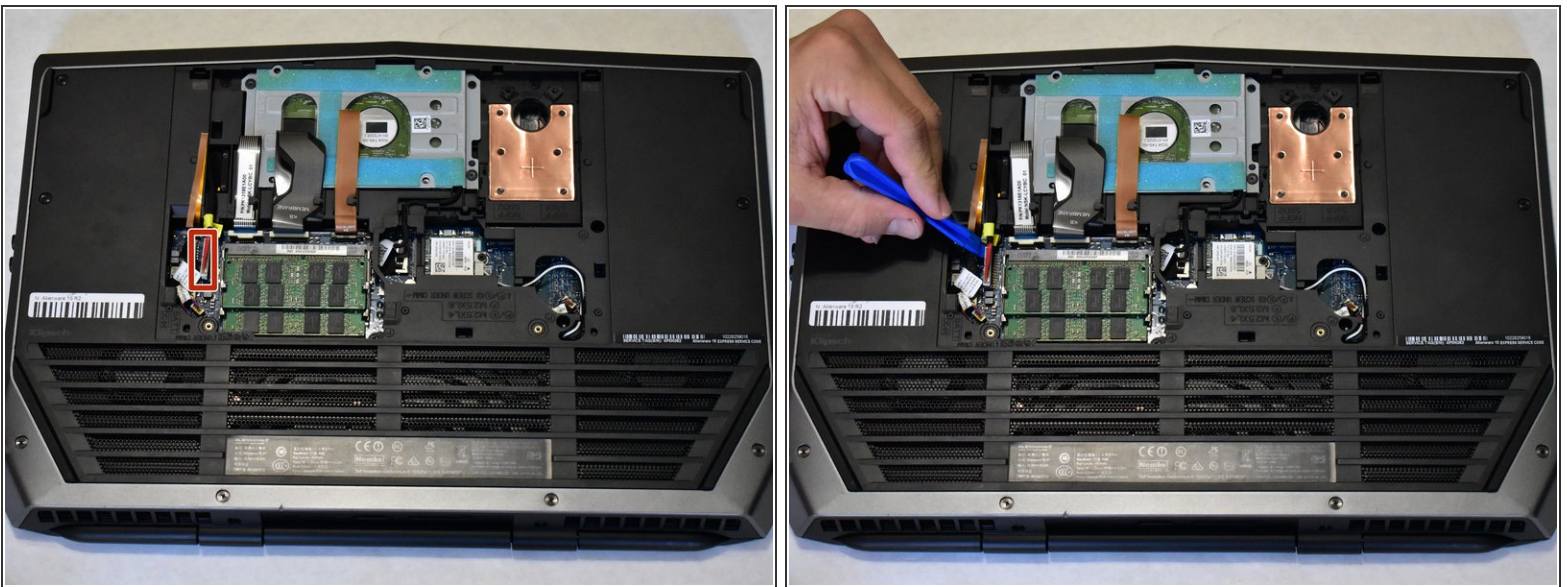
- [T9 Torx Screwdriver](#) (1)
  - [iFixit Opening Tools](#) (1)
  - [Phillips #0 Screwdriver](#) (1)
  - [Anti-Static Wrist Strap](#) (1)
-

## Step 1 — Hard Drive



- Place laptop upside down with the hinge facing you, then remove the two 9.0 mm Phillips #0 screws located in the center of the rear panel. Remove the rear panel by using the iFixit opening tool to separate it from the back of the laptop.

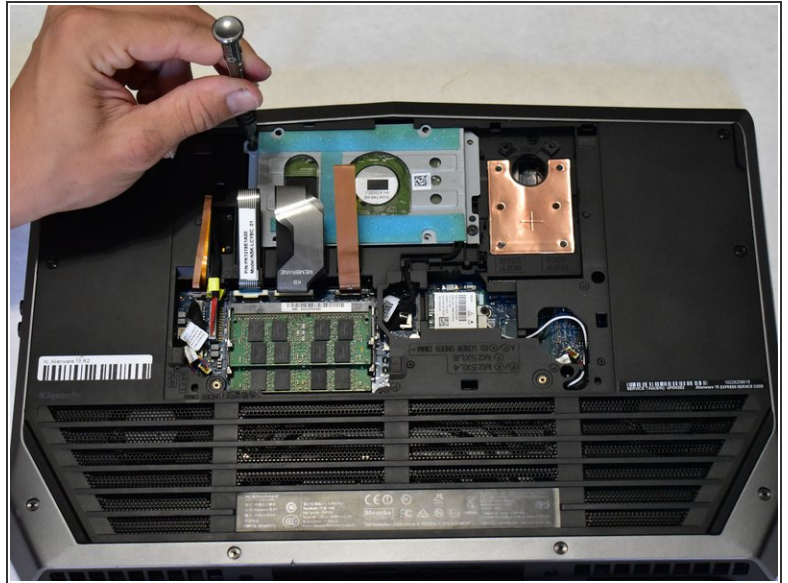
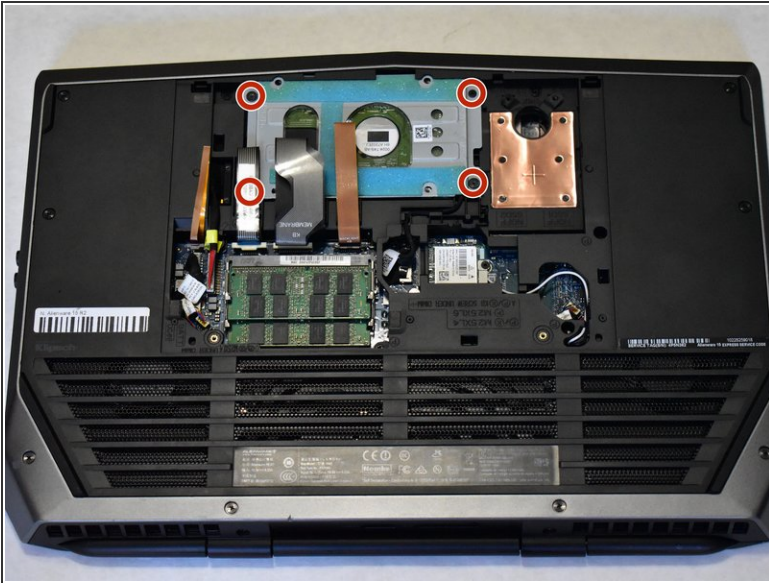
## Step 2



- Use the opening tool to disconnect the battery cable.

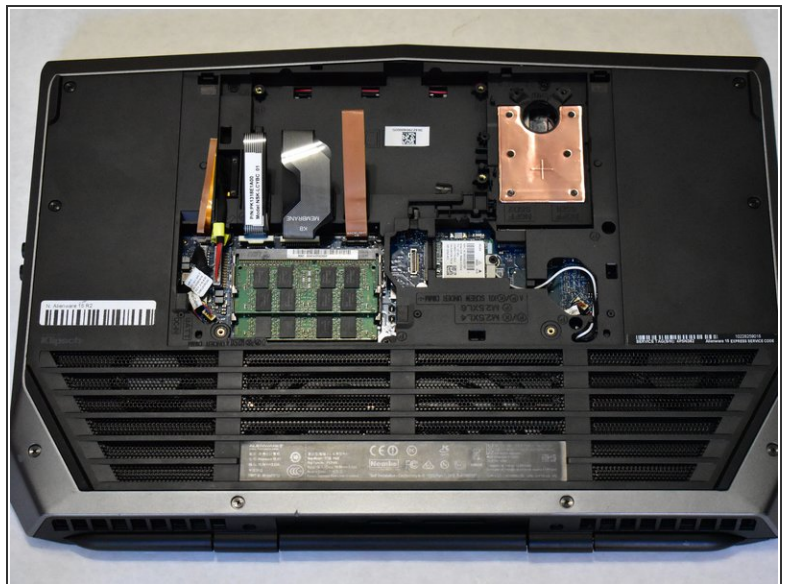
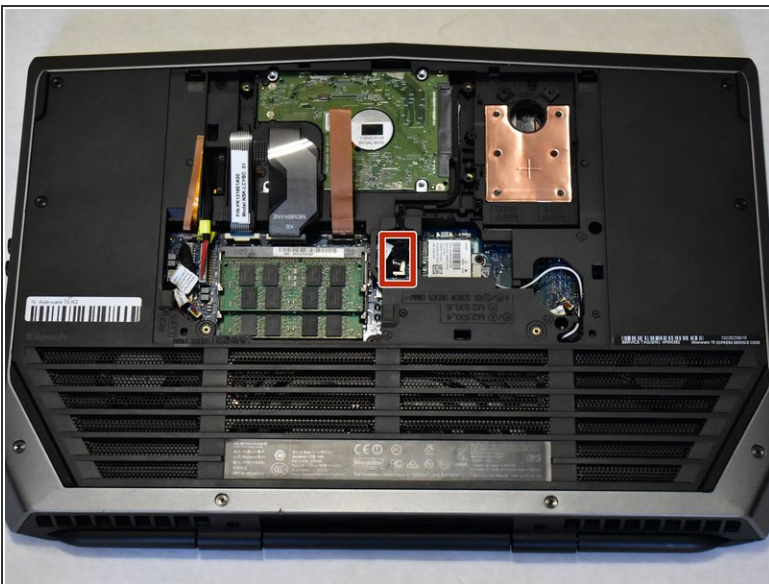


### Step 3



- Use the T9 to remove screws on the hard drive cover.

### Step 4



- Firmly pull on the plastic tab to remove connector from motherboard and remove the hard drive from it's slot.

To reassemble your device, follow these instructions in reverse order.