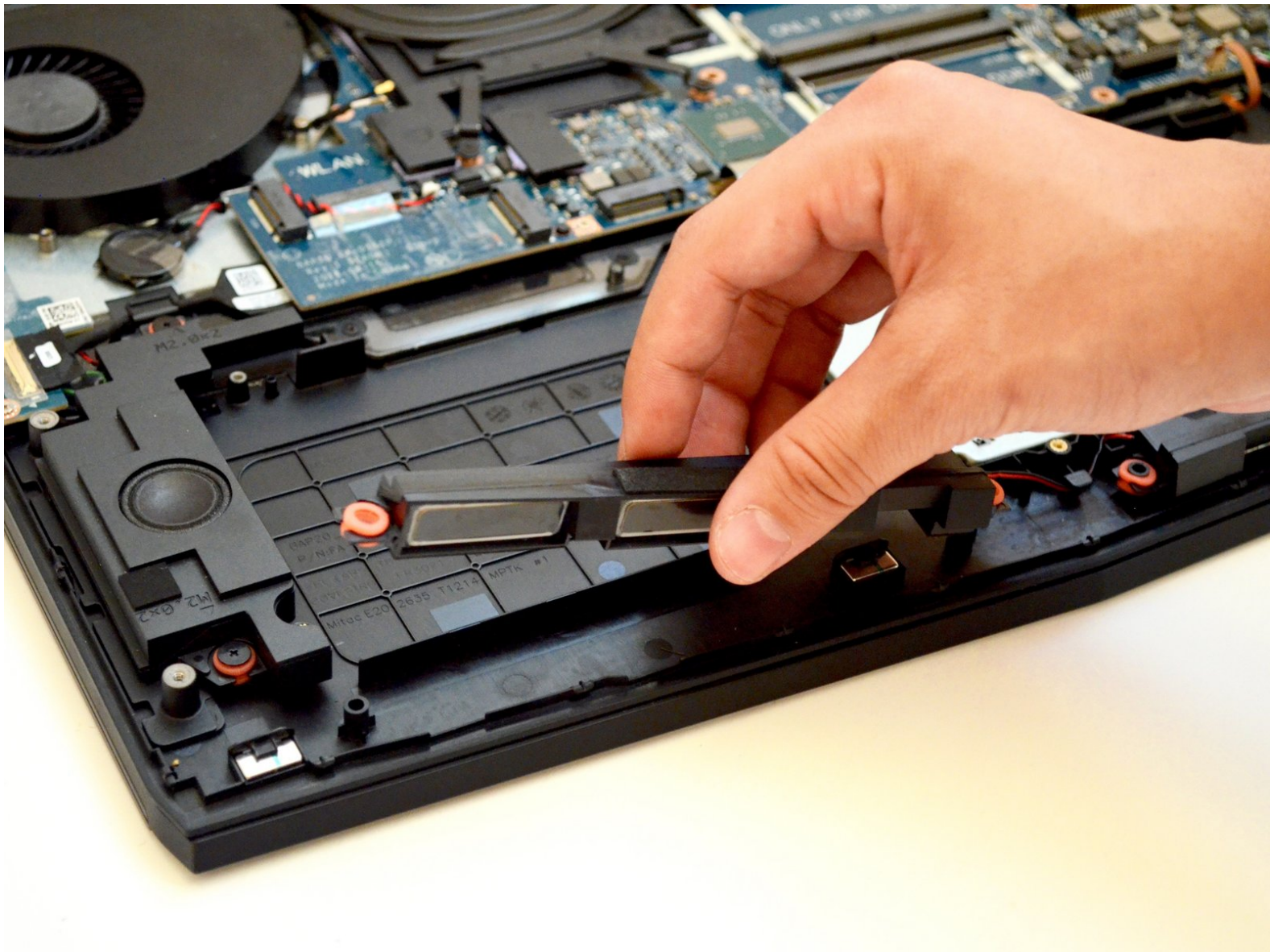




Alienware 17 R4 Front Speakers Replacement

How to replace the front speakers.

Written By: Hector Mendez III



INTRODUCTION

This guide will show you how to remove the front speakers from your device.



TOOLS:

- [Phillips Head Screwdriver: Size PH1](#) (1)
 - [iFixit Opening Tools](#) (1)
-

Step 1 — Base Cover



- Use a **PH1 screwdriver bit** to remove the **six M2.5x13 screws (2.4 mm)** on the back of the laptop.
- Use a **PH1 screwdriver bit** to loosen the **one M2x3 screw (1.9 mm)**.
- ⓘ The **M2x3 screw (1.9 mm)** does not come out completely.

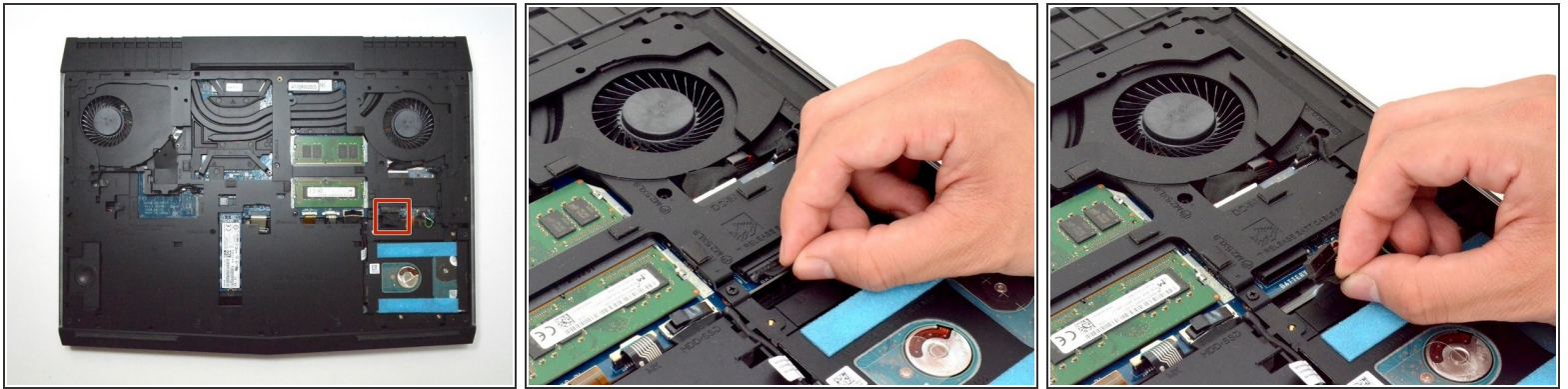
Step 2



- Pull the base cover up to remove it.
- If you are having trouble, insert a **plastic opening tool** into the divots along the laptop's edges to loosen.
- ⓘ Removing the cover may require some force.

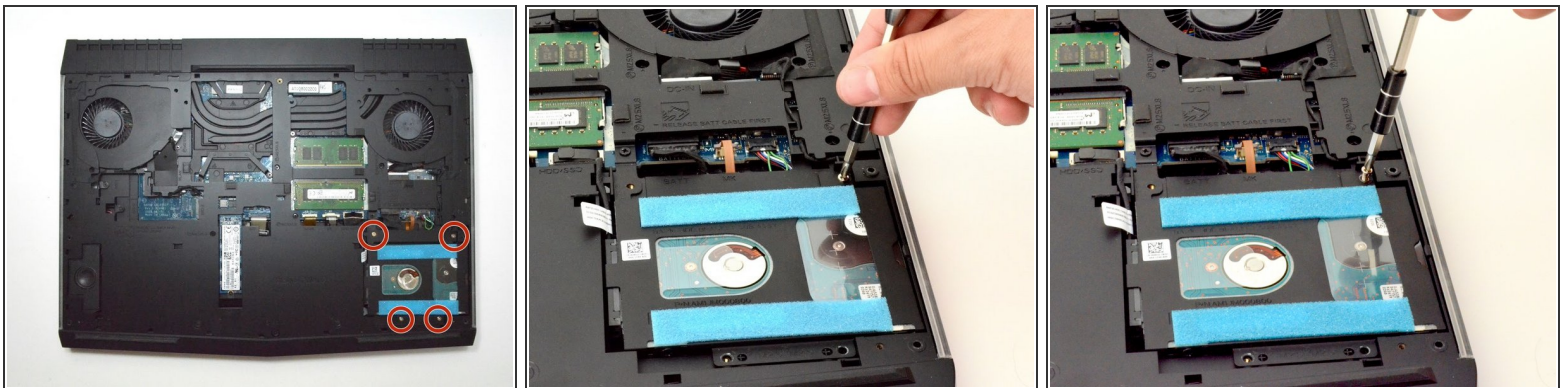
This document was generated on 2019-11-21 03:28:20 PM (MST).

Step 3 — Hard Disk Drive (HDD)



- Disconnect the **battery connector cable**, located on the right side of the laptop, above the hard disk drive.
- ⓘ Once you have removed the cable, wait **5-10 minutes** to allow the laptop to power down.
- ⚠ Failure to remove the battery connector cable properly may damage other parts of the laptop.

Step 4



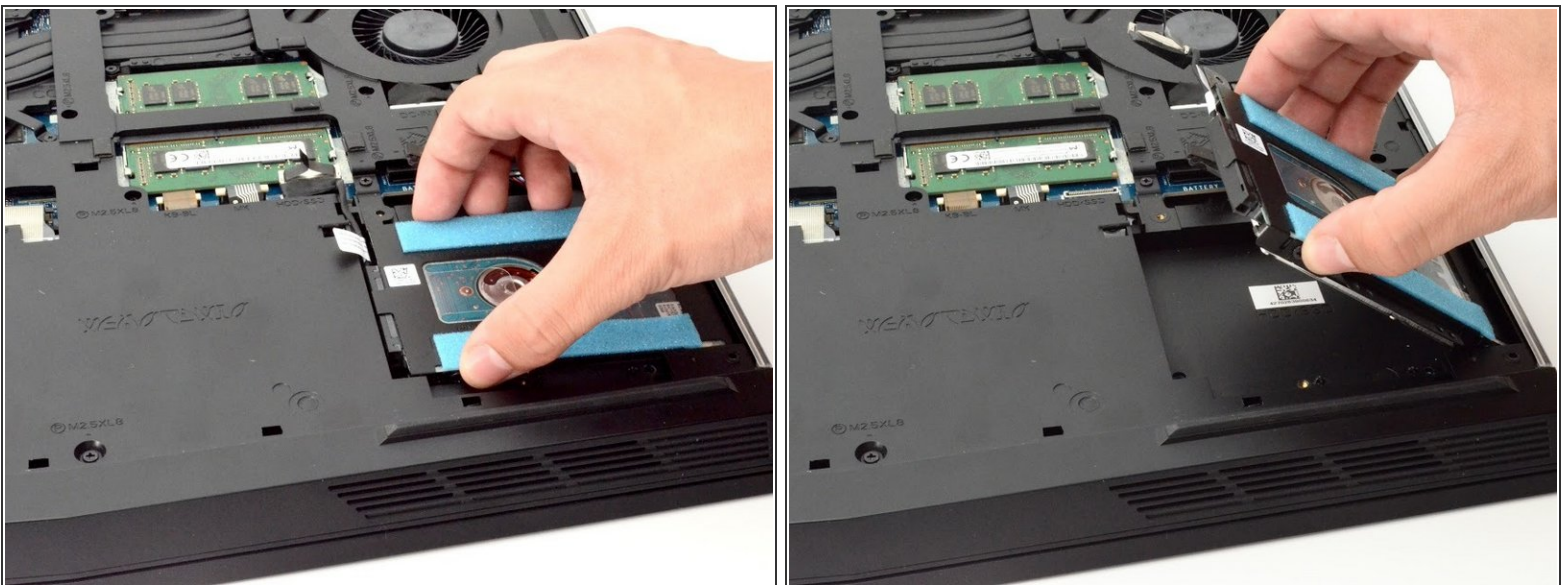
- Use a **PH1 screwdriver bit** to remove the **four M2.5x5 screws (2.4 mm)** on the hard disk drive.

Step 5



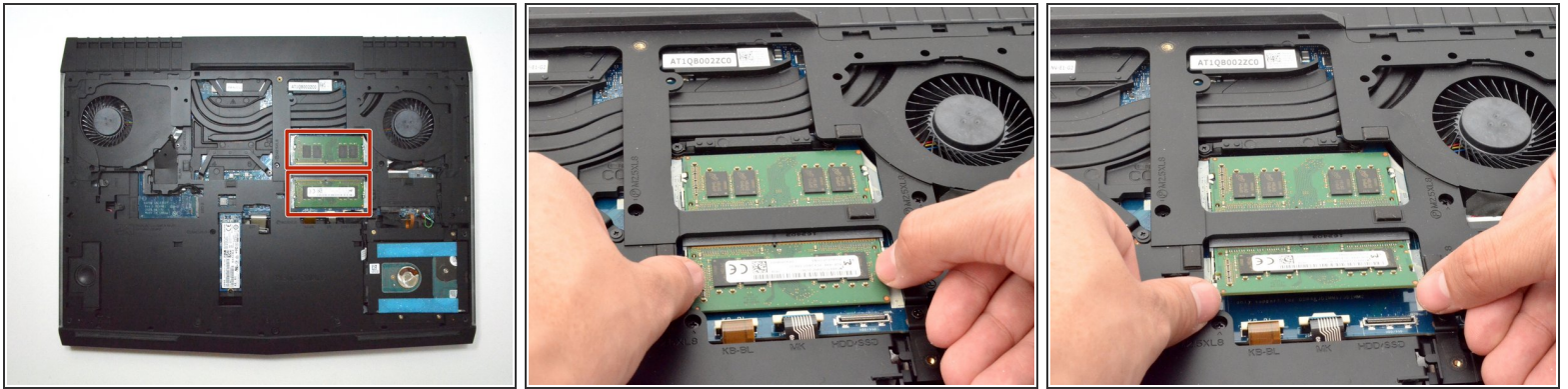
- **Gently** lift the HDD cable to disconnect it from the laptop.

Step 6



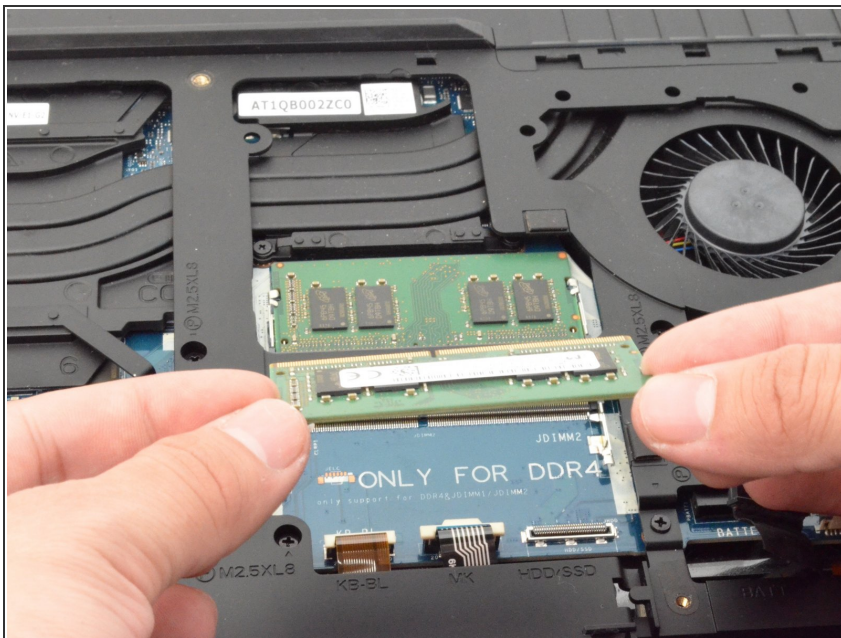
- Pull the hard drive up to remove.

Step 7 — RAM



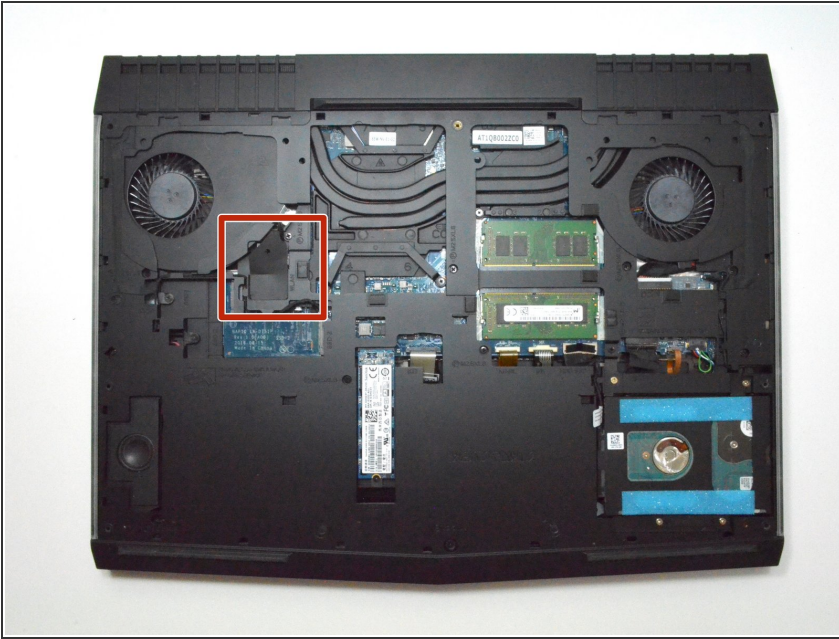
- Move the metal sidings outward to release the RAM card.

Step 8



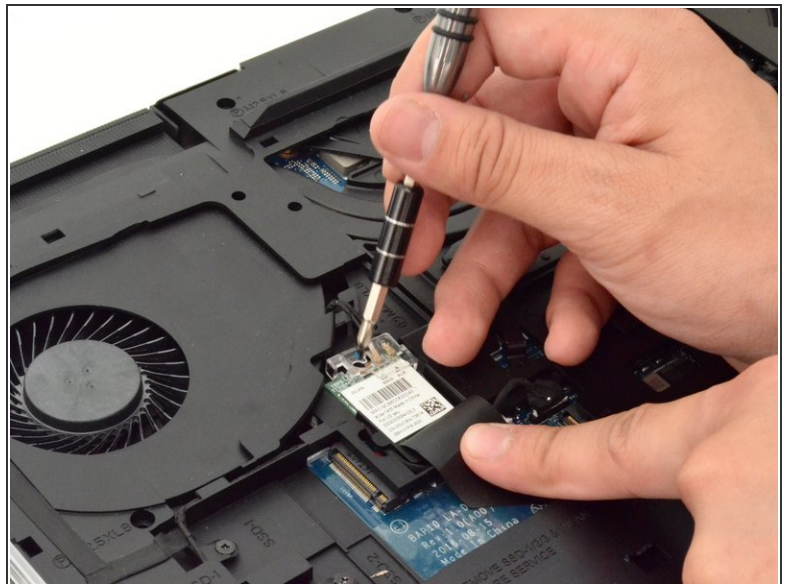
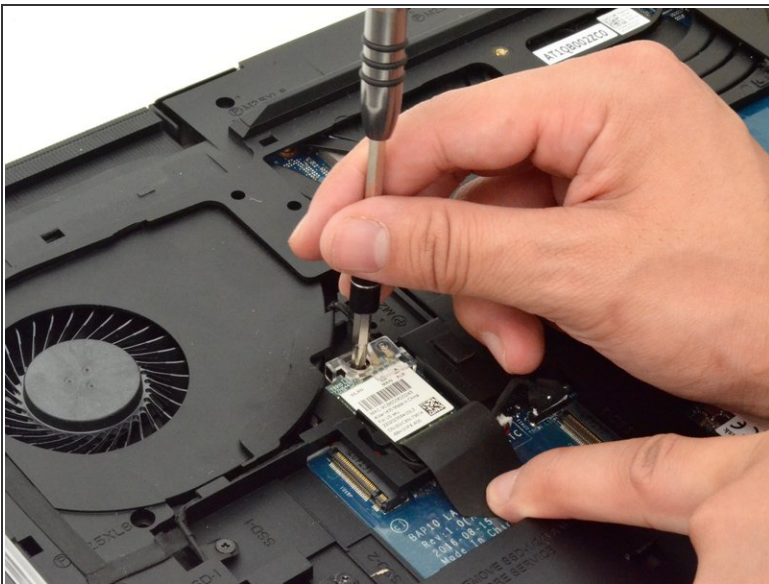
- Slide the RAM card out towards yourself to remove it.
 - Repeat the same step for the RAM card above.
- ⚠ Slide the RAM card out carefully to avoid damaging it.

Step 9 — Wi-Fi card



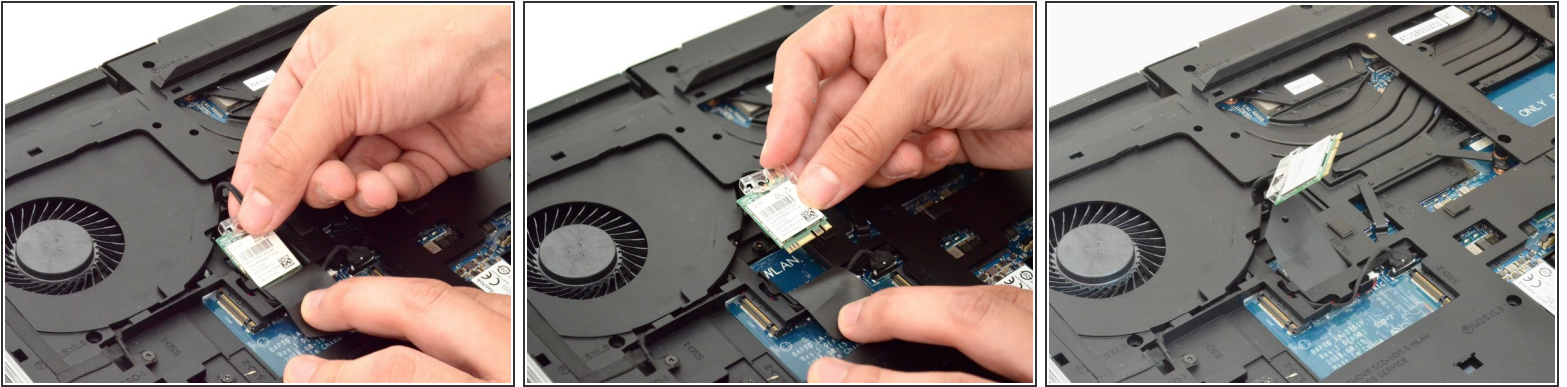
- Locate the WI-FI card.

Step 10




- Peel back plastic cover of wi-fi card.
- Use a **PH1 screwdriver bit** and remove the **one M2x3 screw (1.9 mm)**

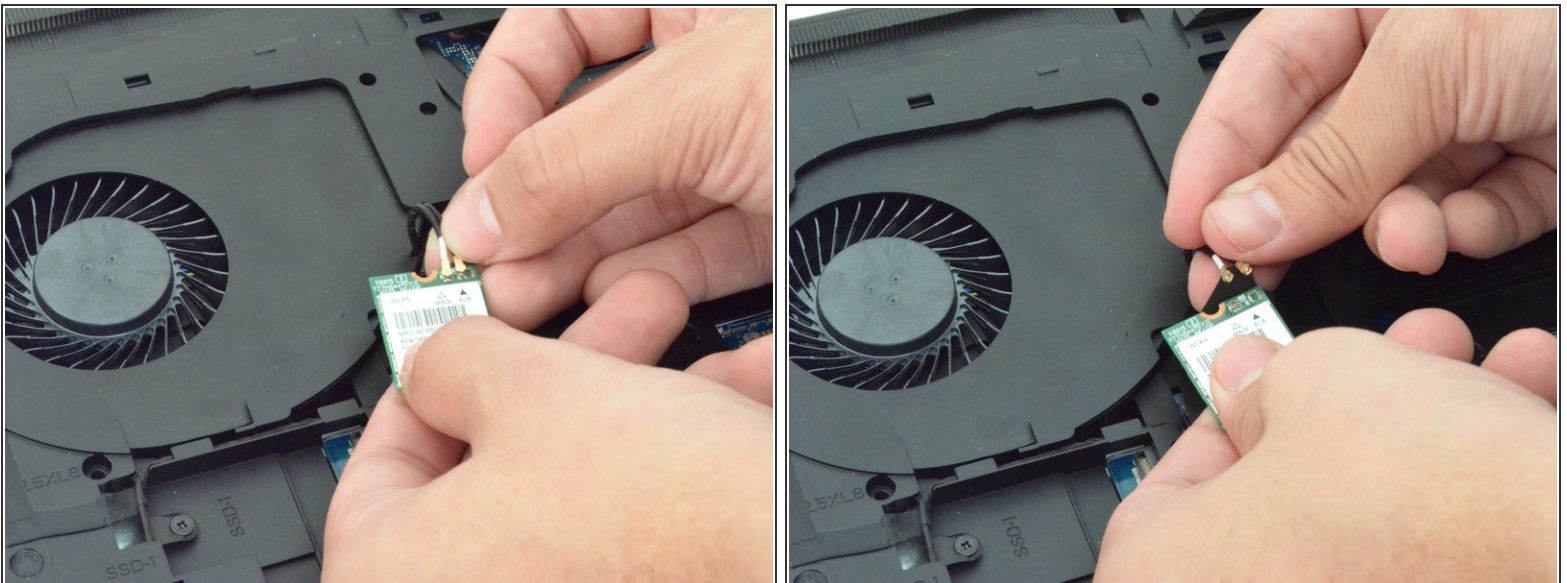
Step 11



- **Gently** undo the clips attached to the wi-fi card.

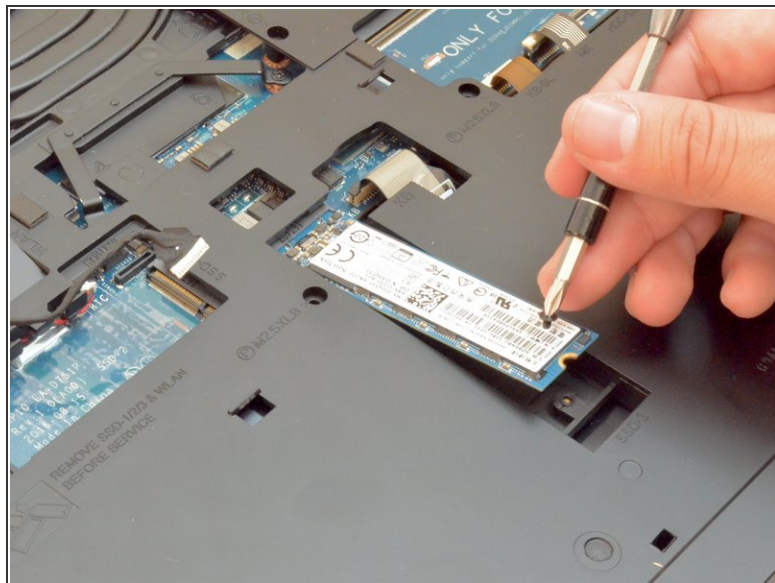
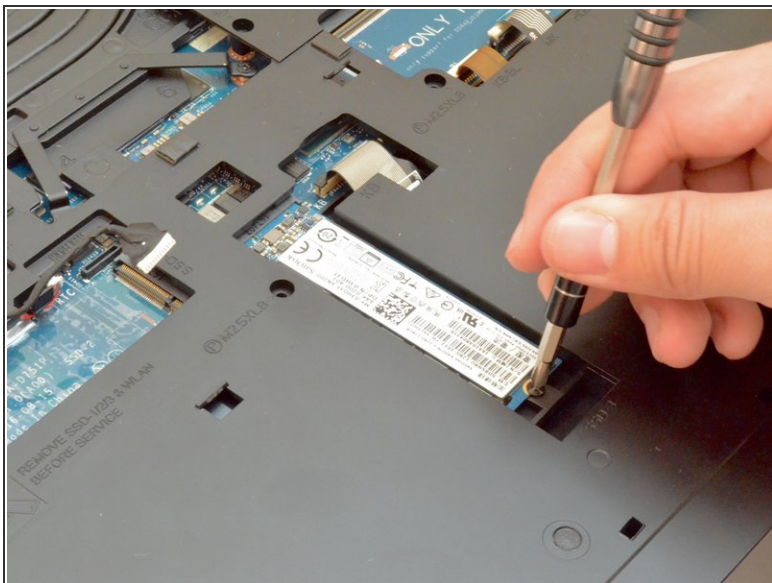
 If the clip is not gently removed it is possible that the entire base will be torn off the wi-fi card. You will need to purchase a new wi-fi card if this occurs.

Step 12



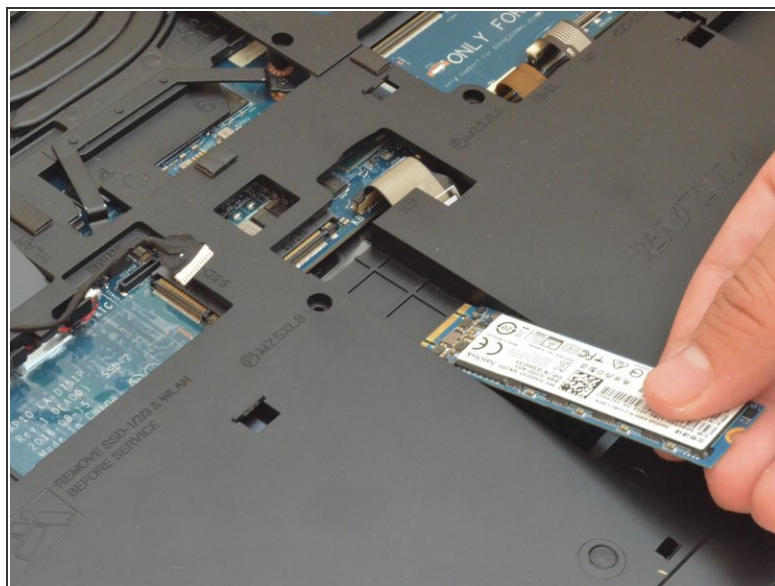
- Locate the cables that connect the wi-fi card.
- Gently pull upwards to remove cables and slide the wi-fi card out from its slot.

Step 13 — Solid State Drive



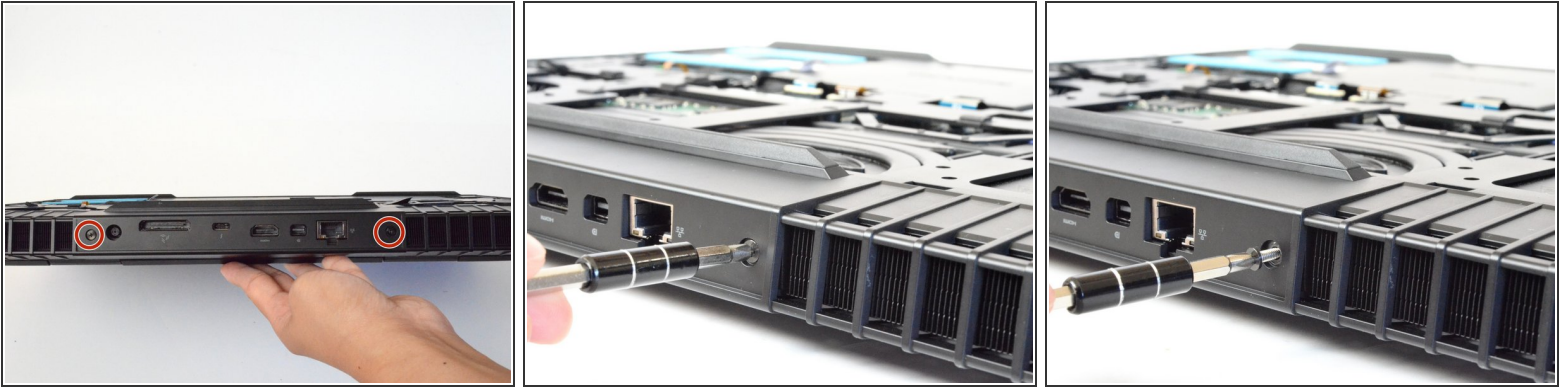
- Remove the **one M2x3 screw (1.9 mm)** using a **PH1 screwdriver bit**

Step 14



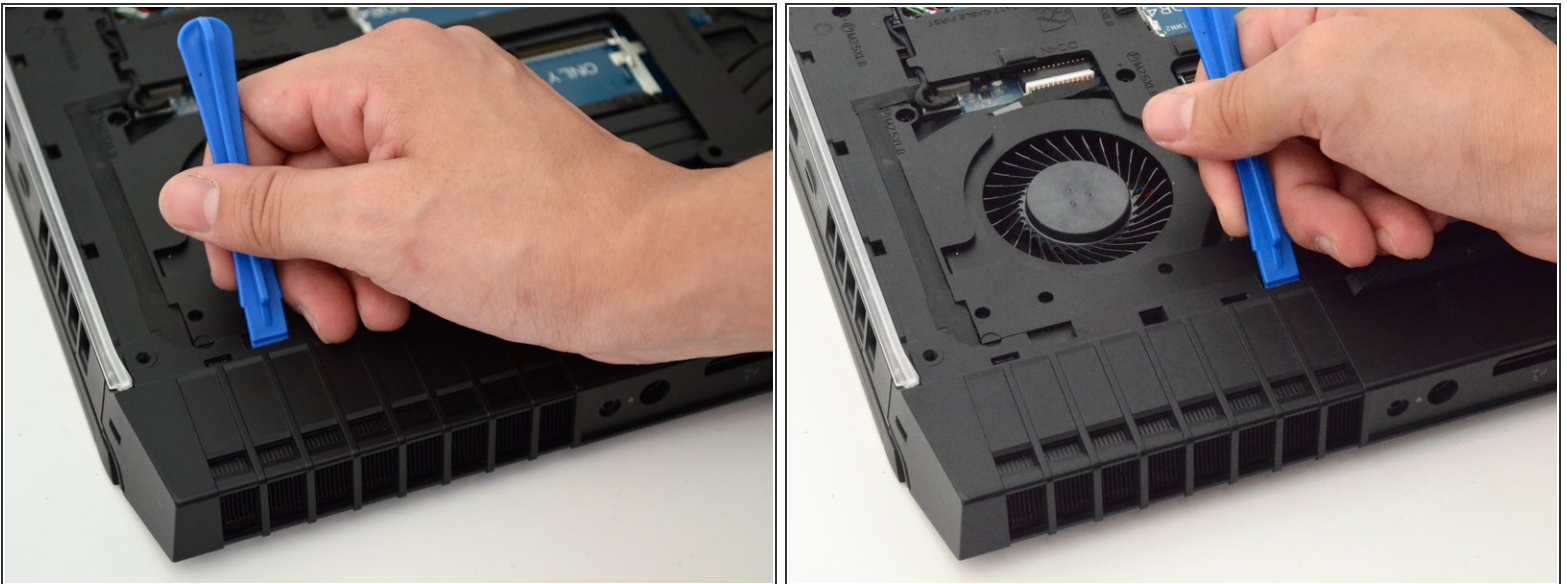
- Slide the solid state drive towards yourself to prevent damage to the card.

Step 15 — Fan Shroud



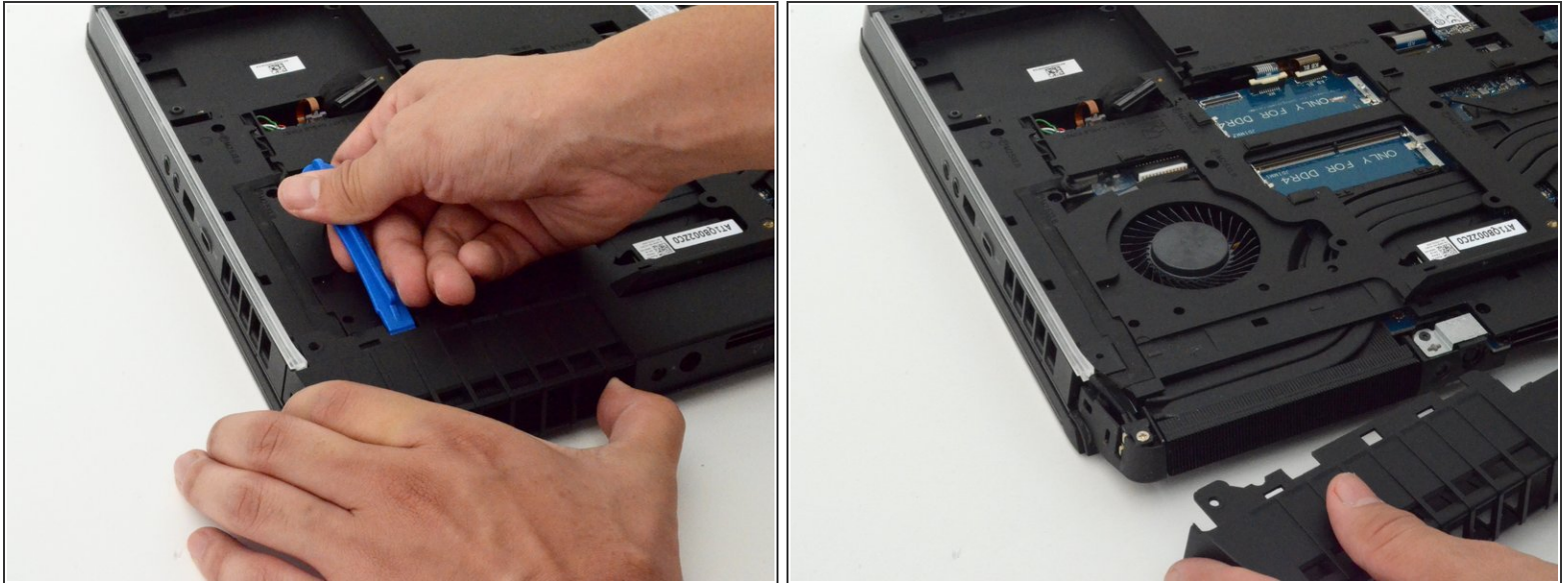
- Remove the **two M2.5x7 screws (2.44 mm)** located on the rear panel using a **PH1 screwdriver bit**.

Step 16



- Insert the **plastic opening tool** under the fan shroud to slowly lift it up.
- Repeat process on the middle and opposite side.

Step 17



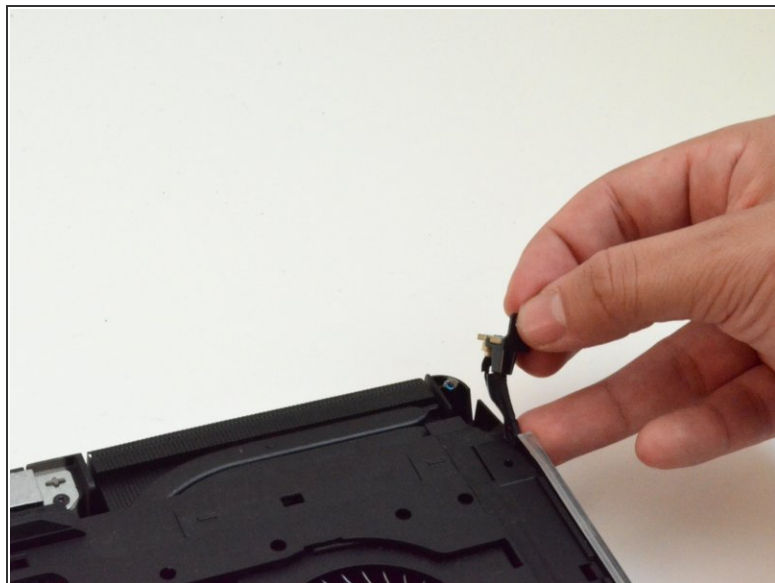
- Firmly lift the **plastic opening tool** and pull the fan shroud towards you.
- i** This will take a large amount of force and will not come out easily the first time.
- !** Careful not to tear out the piece causing damage to the fan shroud

Step 18 — Plastic Cover



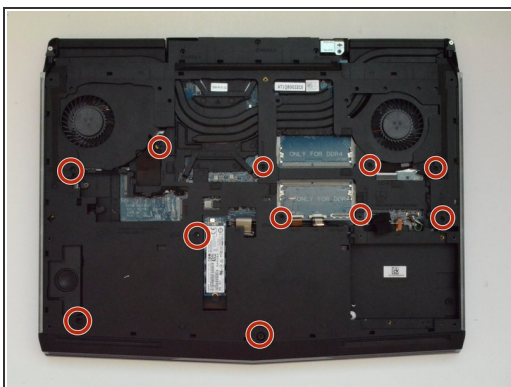
- Unscrew the **two M2x3 screws (1.9 mm)** at the top right and top left of the laptop that hold the tron lights in place.

Step 19



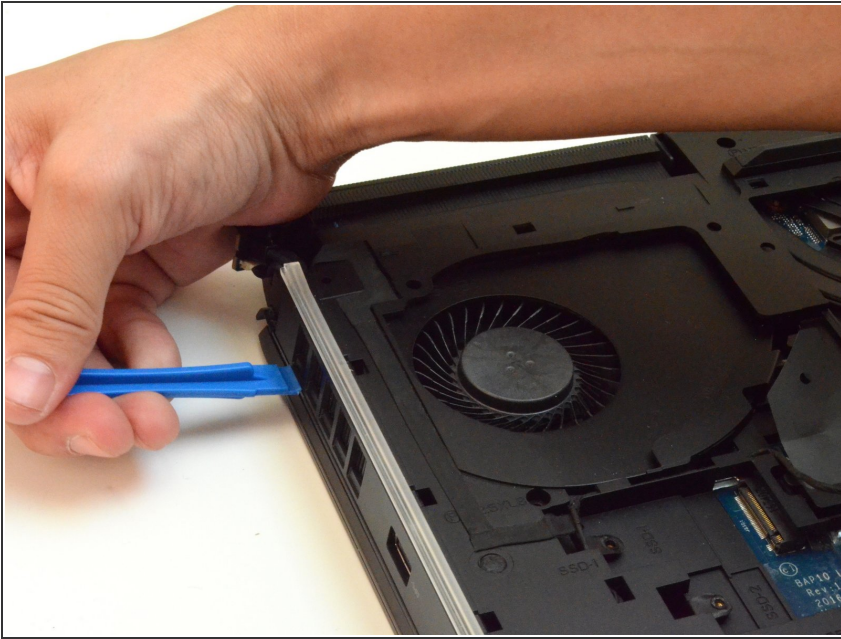
- Follow the wiring to unplug the front lights.

Step 20



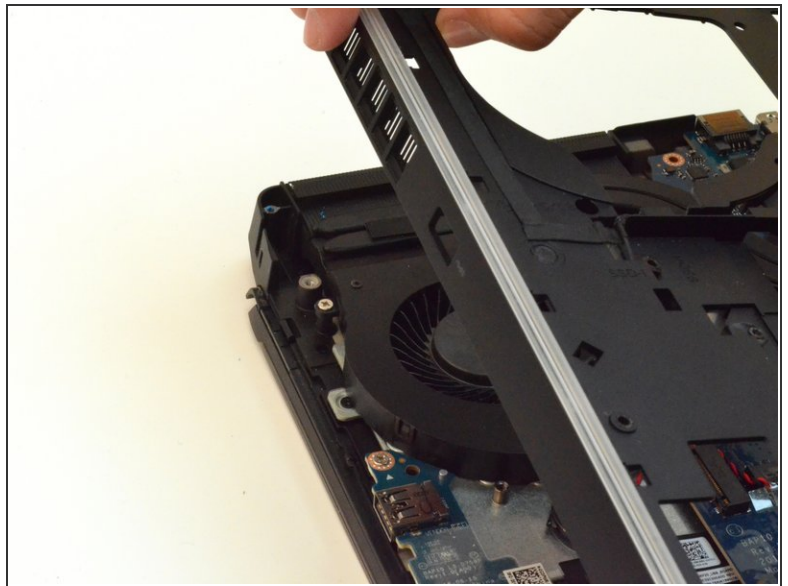
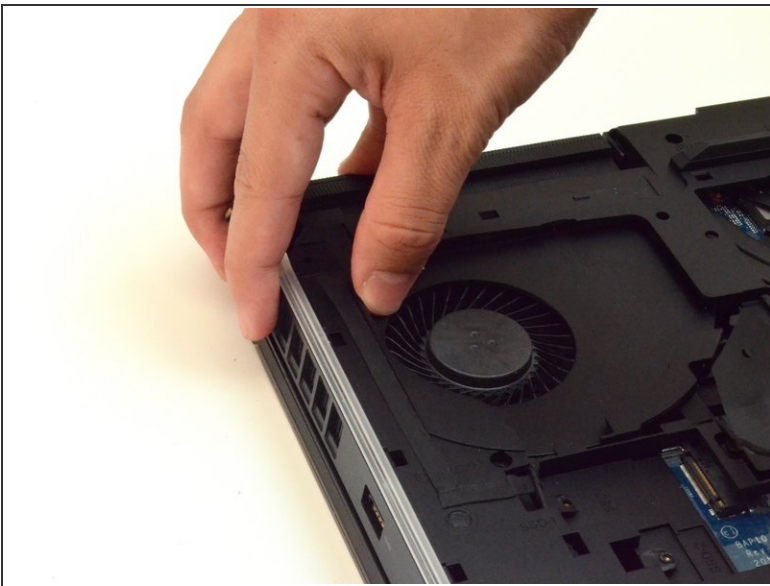
- Remove the **fourteen M2.5XL8' screws (2.4 mm)** located in the plastic cover using the **PH1 screwdriver**.

Step 21



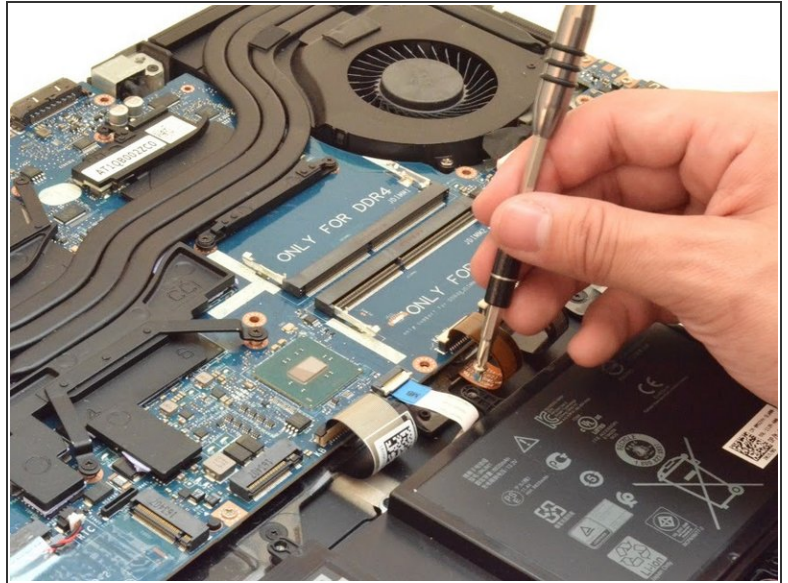
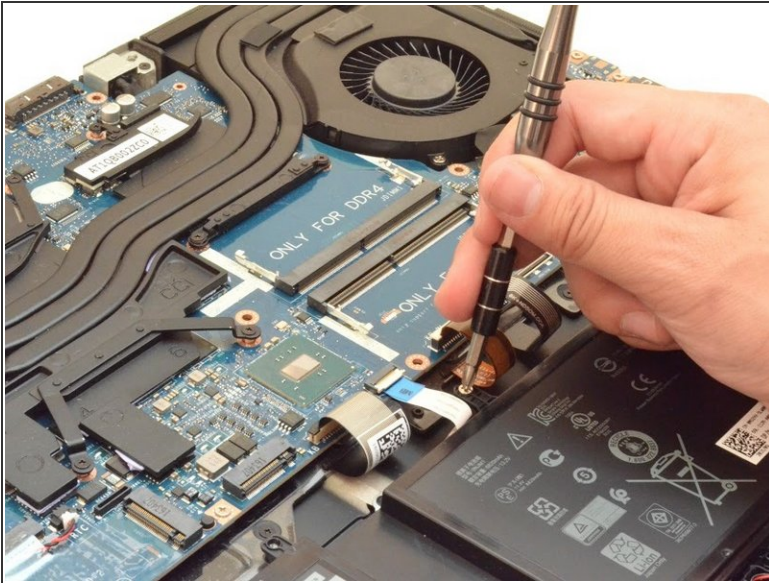
- Use the **plastic opening tool** to gently lift the sides of the cover.

Step 22



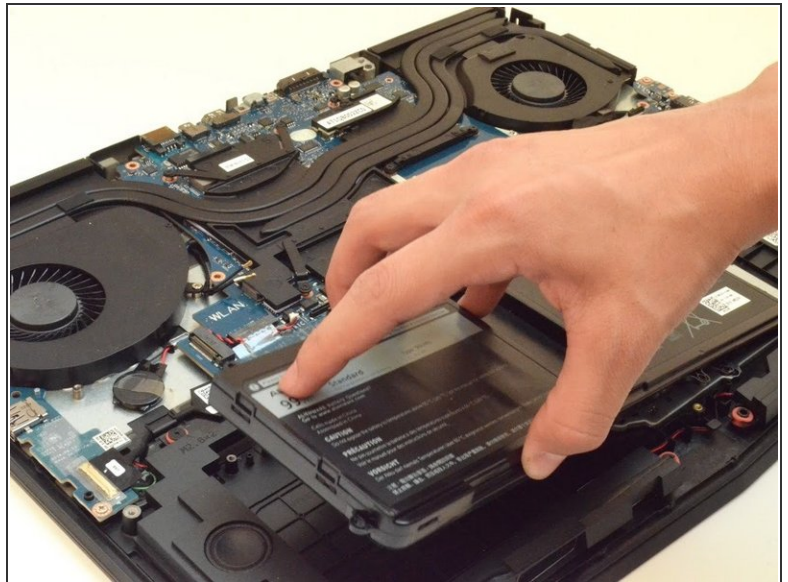
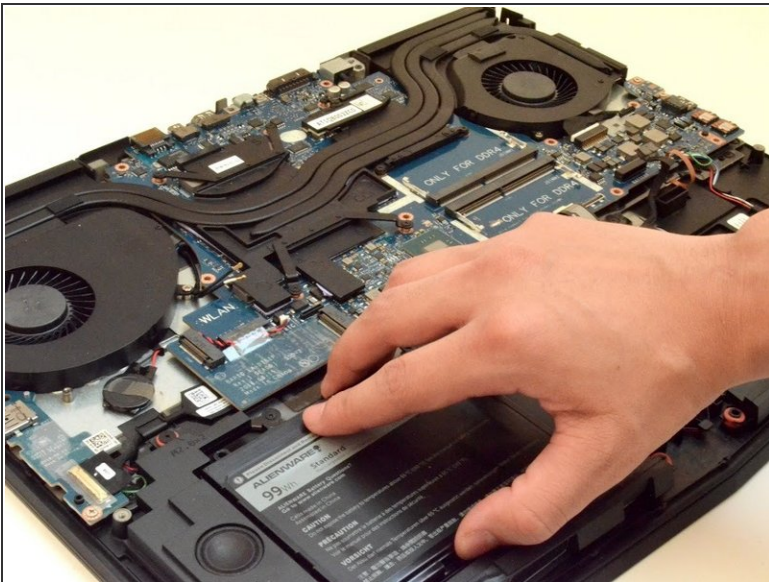
- Slowly lift up the plastic cover.

Step 23 — Battery



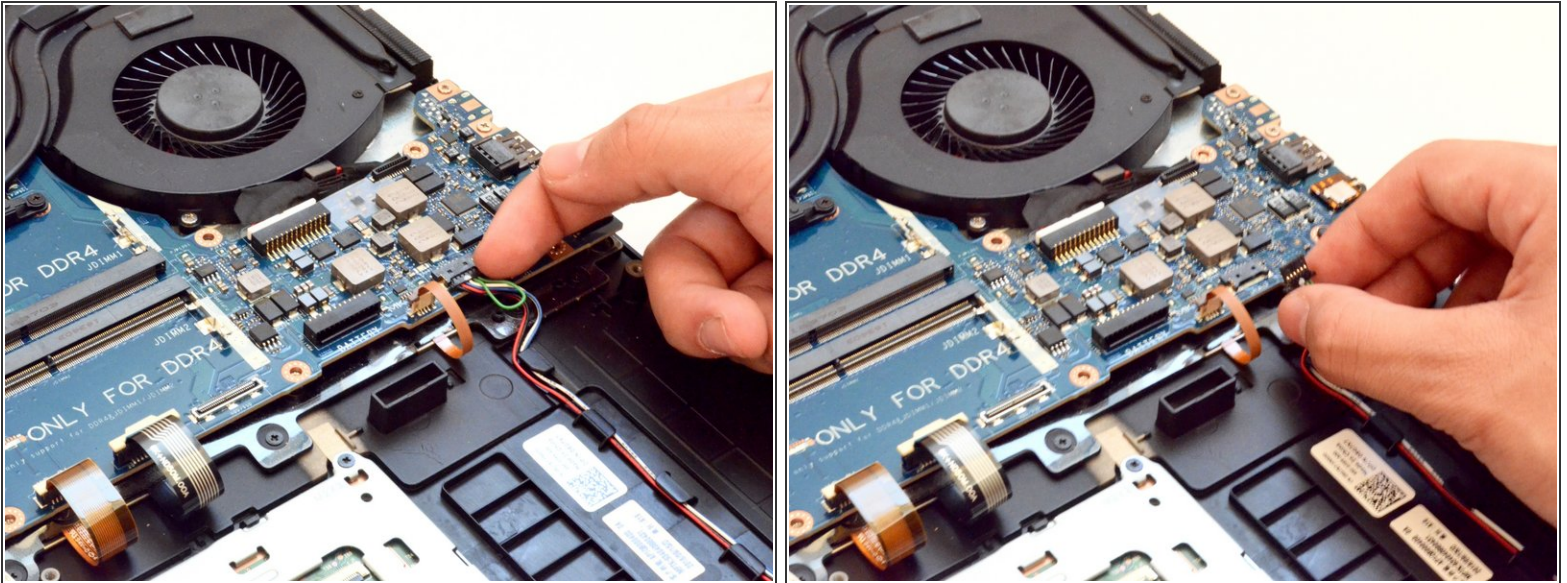
- Unscrew the **four M2.5 screws (2.4 mm)** with a **PH1 screwdriver bit**.

Step 24



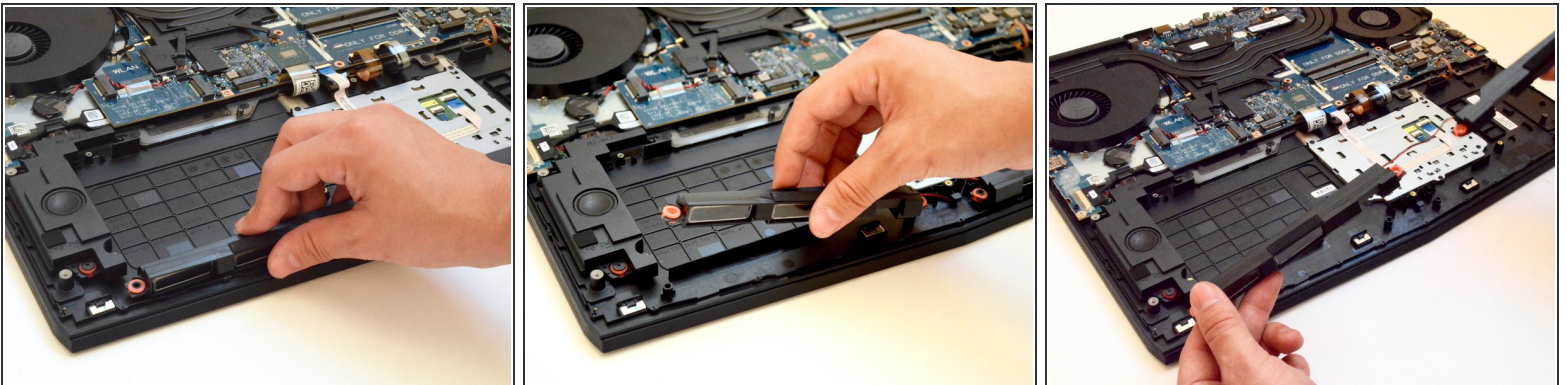
- Lift the battery up to remove it.

Step 25 — Front Speakers



- Unplug the wire that connects the front speakers to the laptop.

Step 26



- **Gently** lift up the front speakers.
- ⓘ The speaker does not have screws holding it in place.

To reassemble your device, follow these instructions in reverse order.