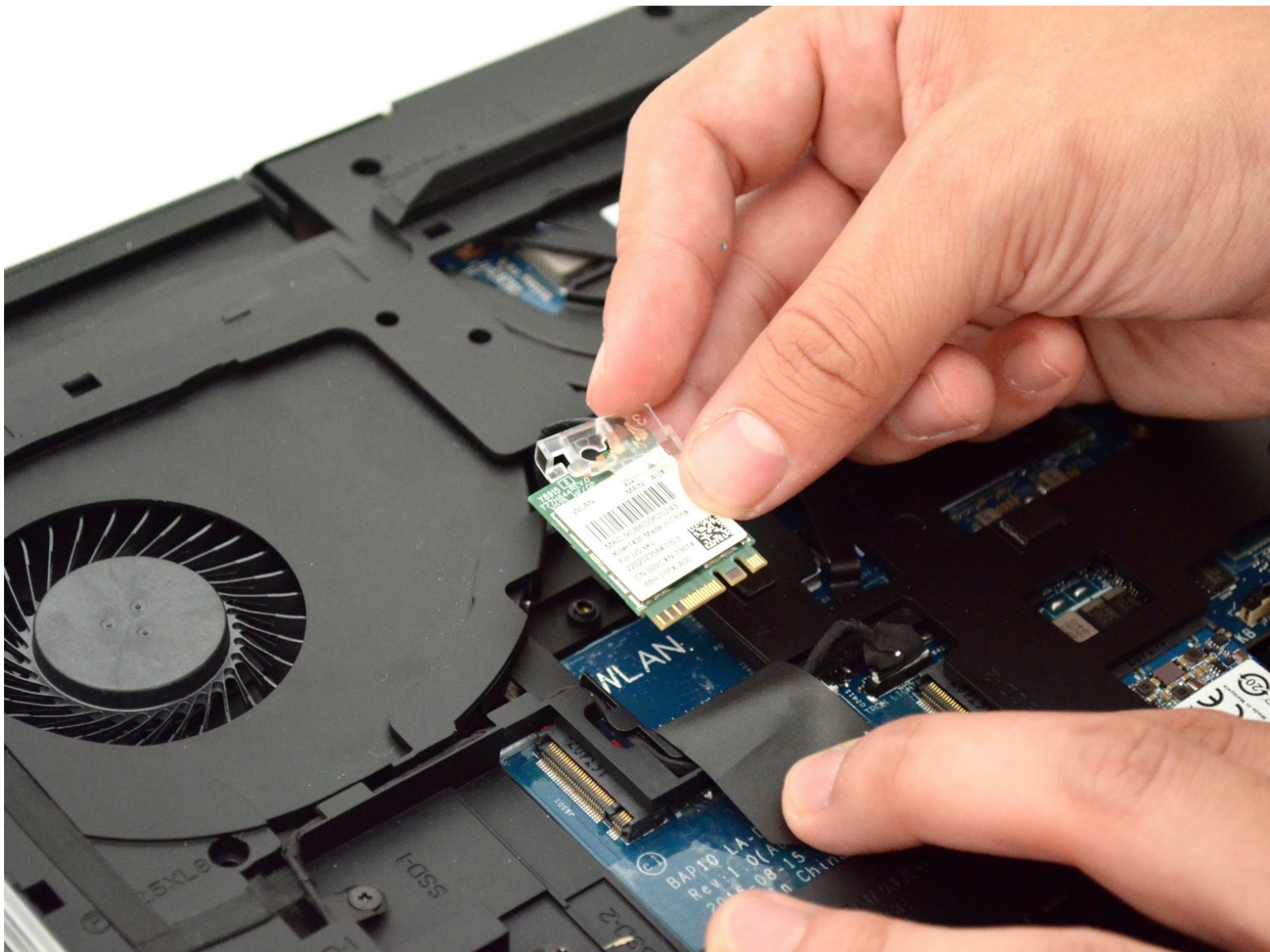




# Alienware 17 R4 Wi-Fi Card Replacement

Replacement of the laptops Wi-Fi card

Written By: Hector Mendez III



# INTRODUCTION

This guide will teach you how to remove the wi-fi card.



## TOOLS:

- [Phillips Head Screwdriver: Size PH1](#) (1)
  - [iFixit Opening Tools](#) (1)
-

## Step 1 — Base Cover



- Use a **PH1 screwdriver bit** to remove the **six M2.5x13 screws (2.4 mm)** on the back of the laptop.
- Use a **PH1 screwdriver bit** to loosen the **one M2x3 screw (1.9 mm)**.
- ⓘ The **M2x3 screw (1.9 mm)** does not come out completely.

## Step 2

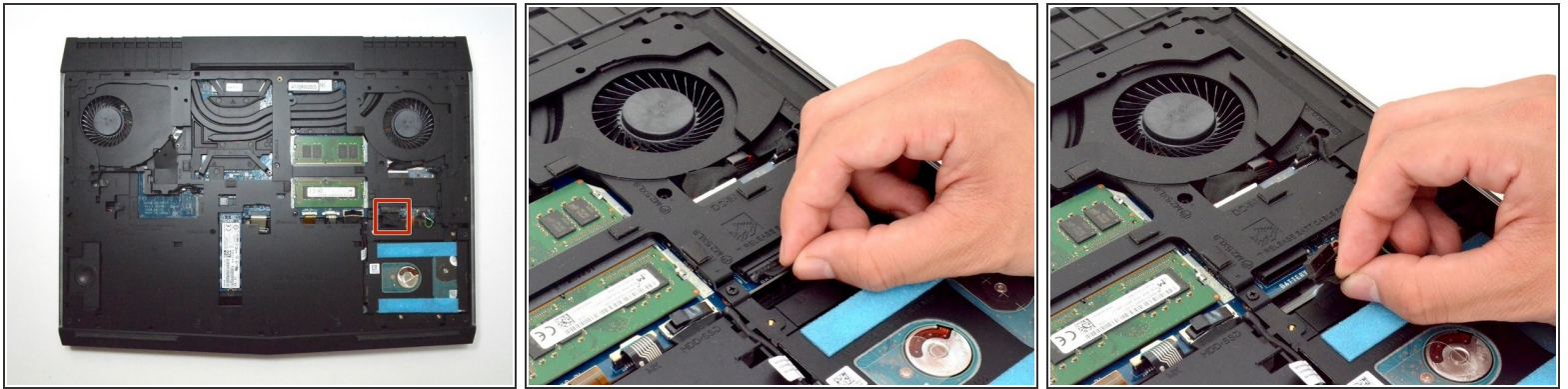


- Pull the base cover up to remove it.
- If you are having trouble, insert a **plastic opening tool** into the divots along the laptop's edges to loosen.
- ⓘ Removing the cover may require some force.

This document was generated on 2019-12-09 08:41:52 PM (MST).

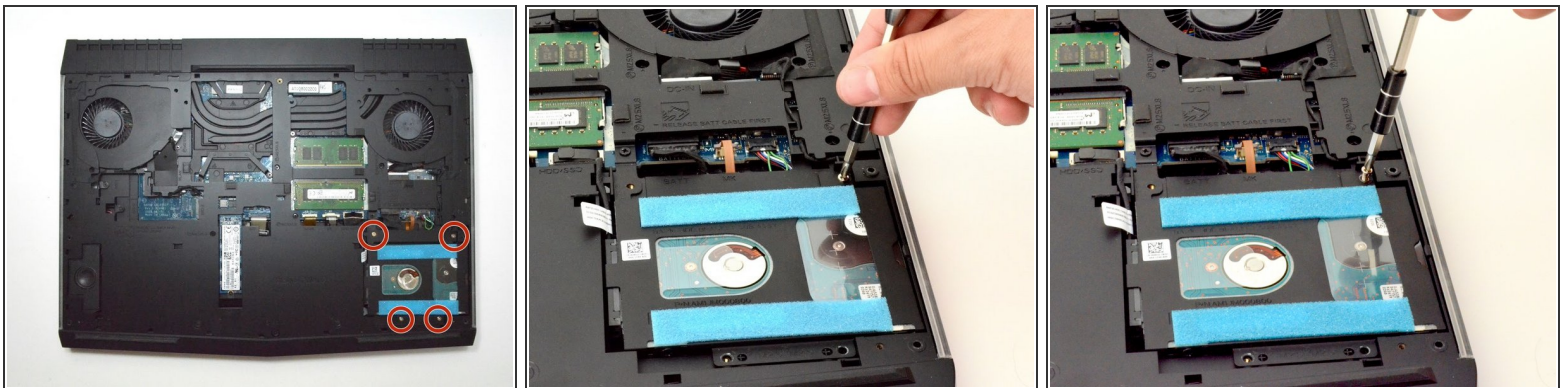


### Step 3 — Hard Disk Drive (HDD)



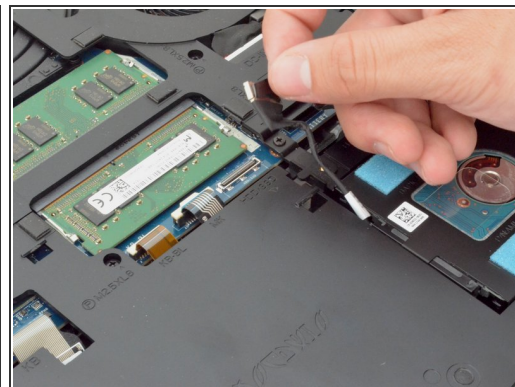
- Disconnect the **battery connector cable**, located on the right side of the laptop, above the hard disk drive.
- ⓘ Once you have removed the cable, wait **5-10 minutes** to allow the laptop to power down.
- ⚠ Failure to remove the battery connector cable properly may damage other parts of the laptop.

### Step 4



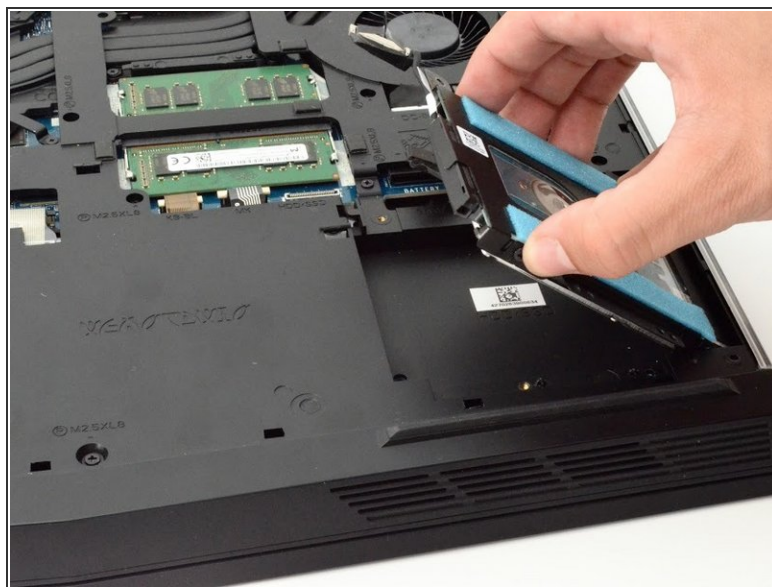
- Use a **PH1 screwdriver bit** to remove the **four M2.5x5 screws (2.4 mm)** on the hard disk drive.

## Step 5



- **Gently** lift the HDD cable to disconnect it from the laptop.

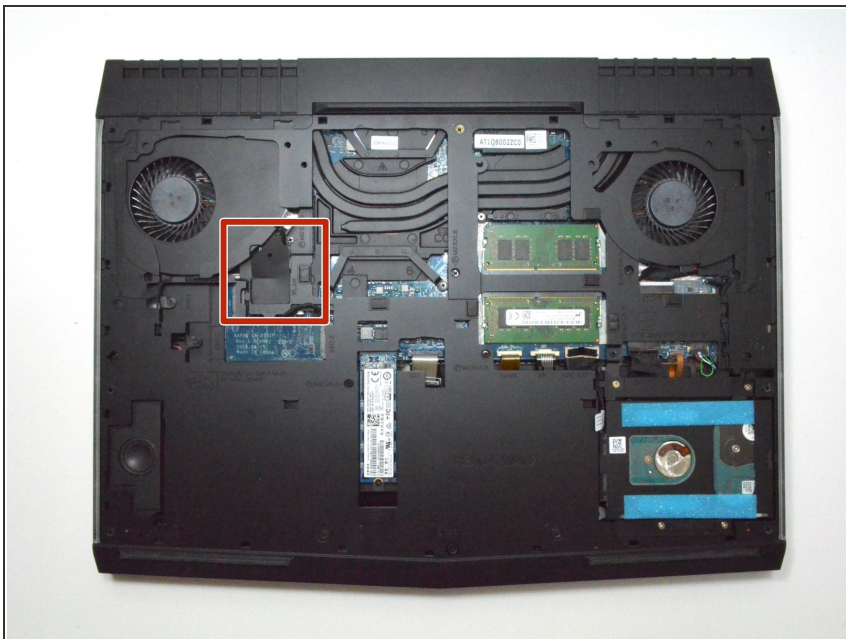
## Step 6



- Pull the hard drive up to remove.

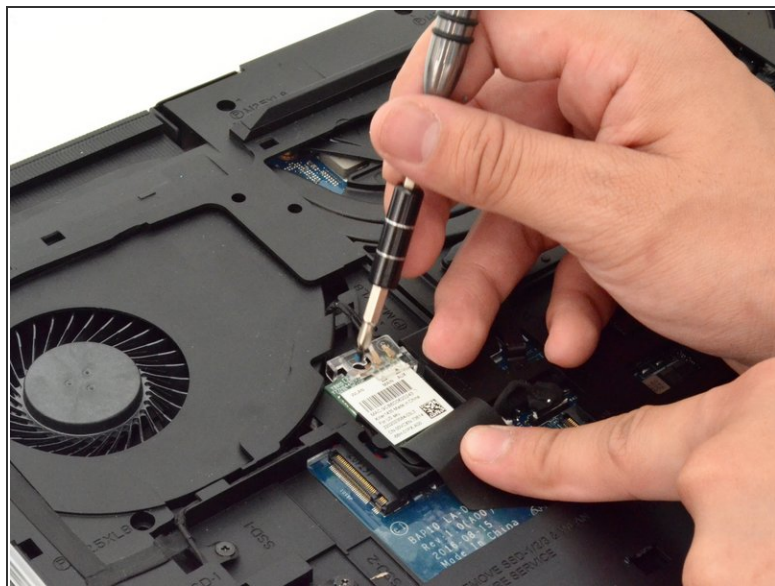
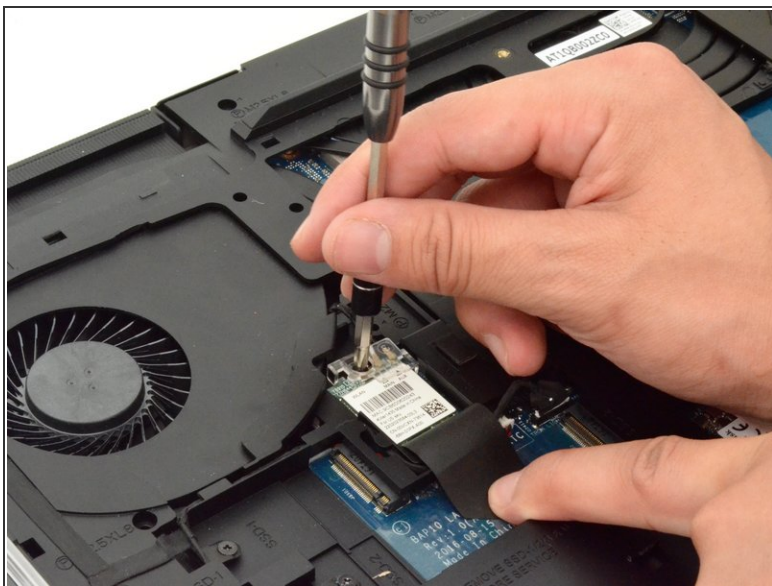


## Step 7 — Wi-Fi card



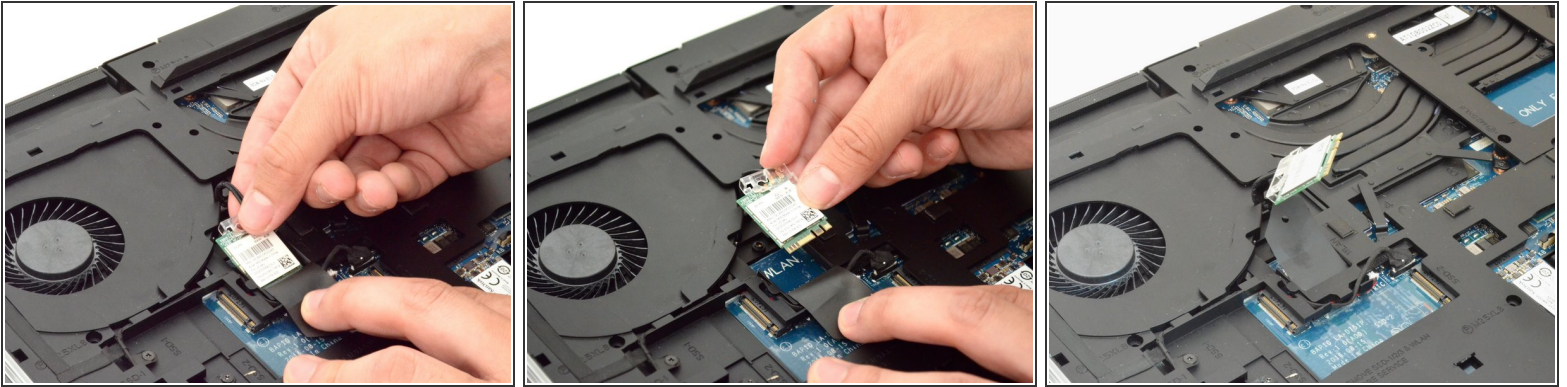
- Locate the WI-FI card.

## Step 8




- Peel back plastic cover of wi-fi card.
- Use a **PH1 screwdriver bit** and remove the **one M2x3 screw (1.9 mm)**

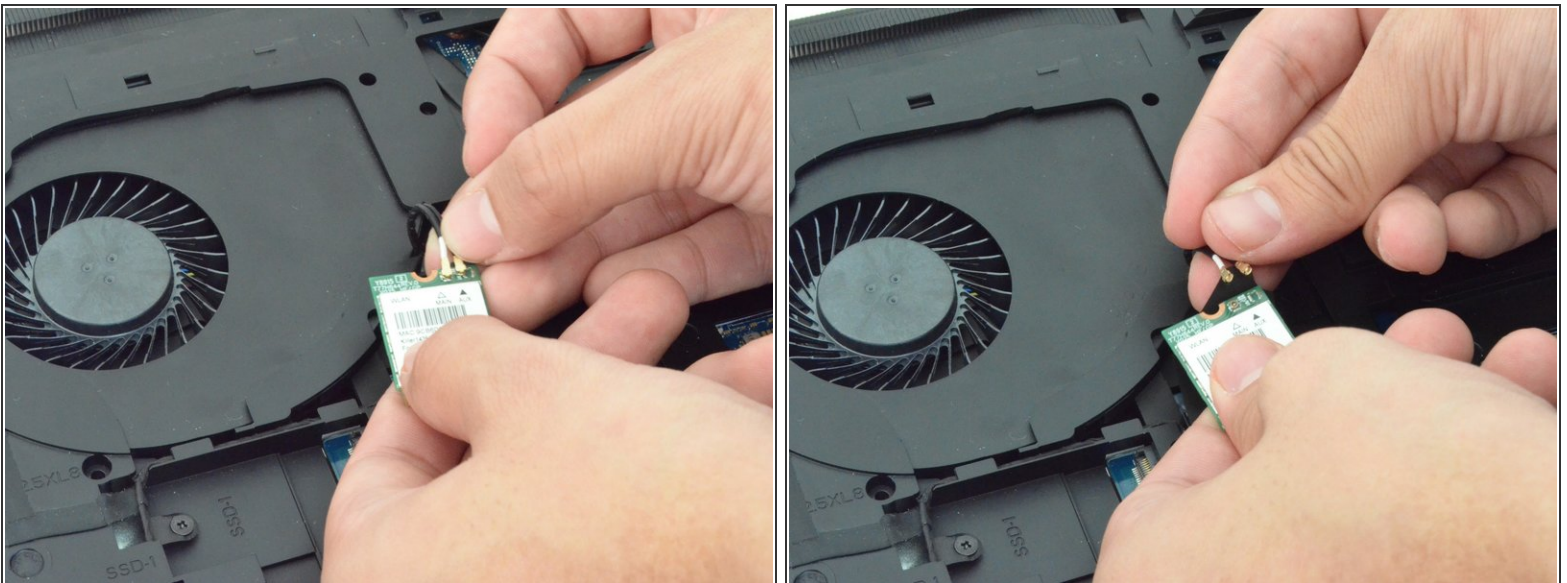
## Step 9



- **Gently** undo the clips attached to the wi-fi card.

 If the clip is not gently removed it is possible that the entire base will be torn off the wi-fi card. You will need to purchase a new wi-fi card if this occurs.

## Step 10



- Locate the cables that connect the wi-fi card.
- Gently pull upwards to remove cables and slide the wi-fi card out from its slot.

To reassemble your device, follow these instructions in reverse order.