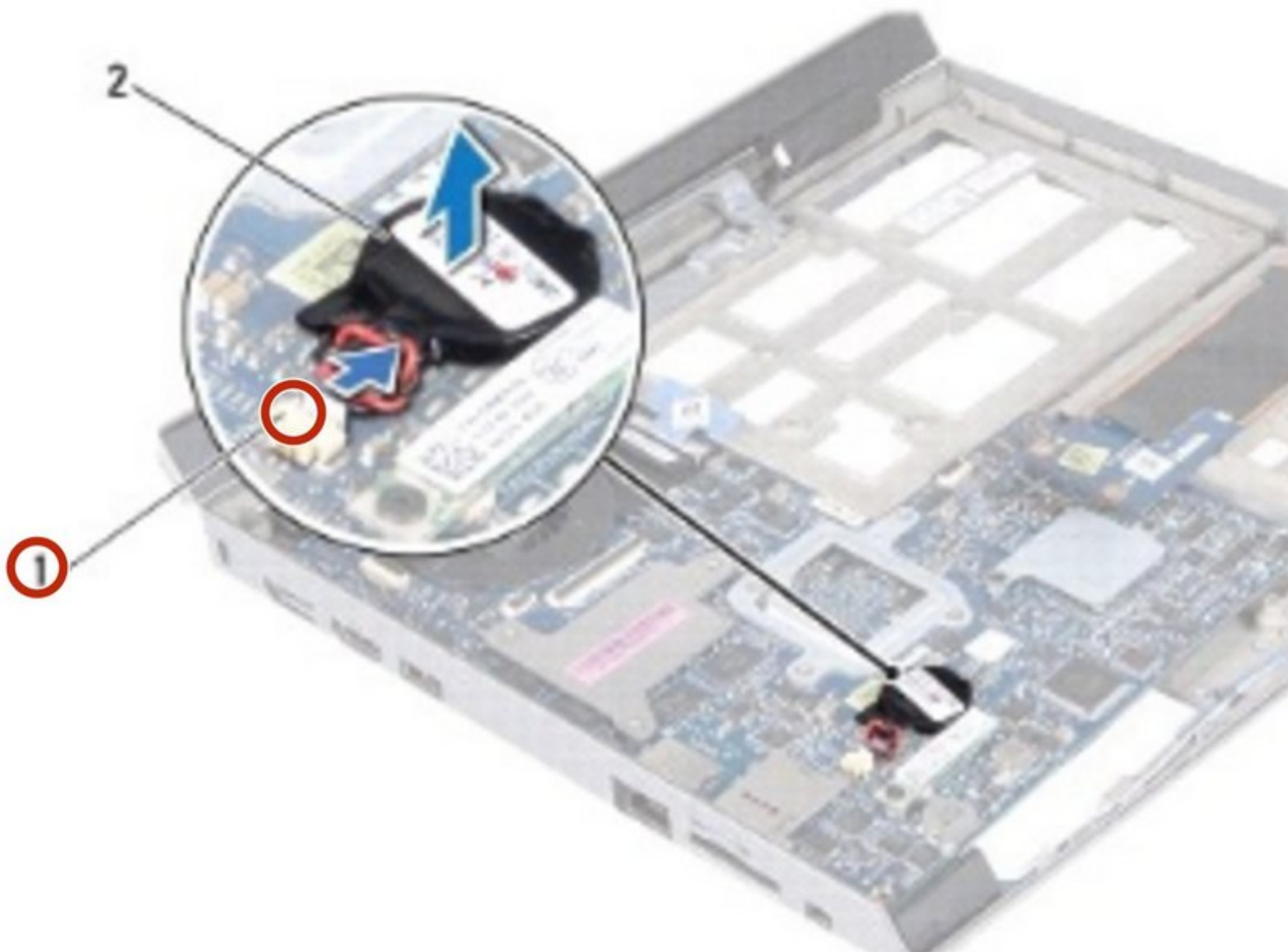




Alienware M11xR2 Coin-Cell Battery Replacement

Written By: darrius



INTRODUCTION

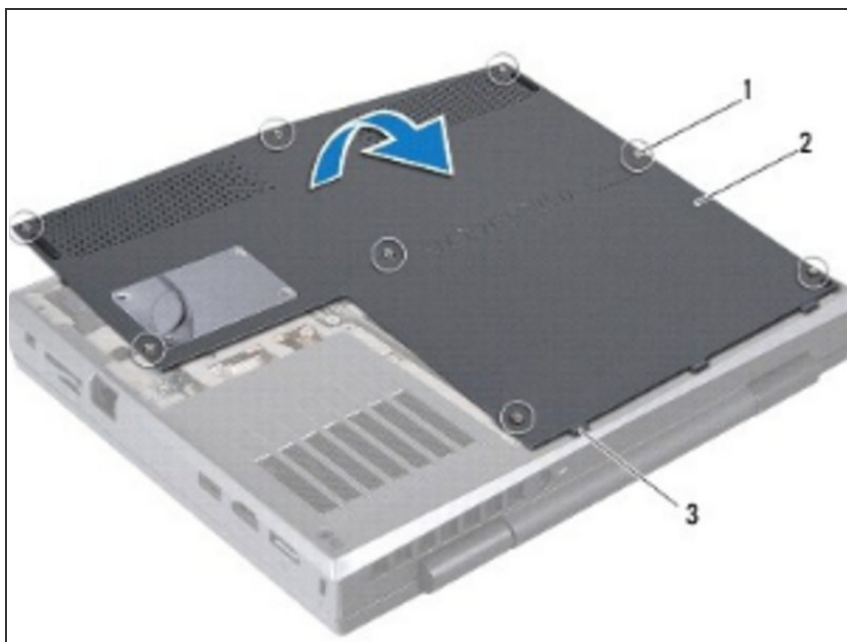
How to remove and replace Coin-Cell Battery



TOOLS:

- [Phillips #0 Screwdriver](#) (1)
-

Step 1 — Removing the Base Cover

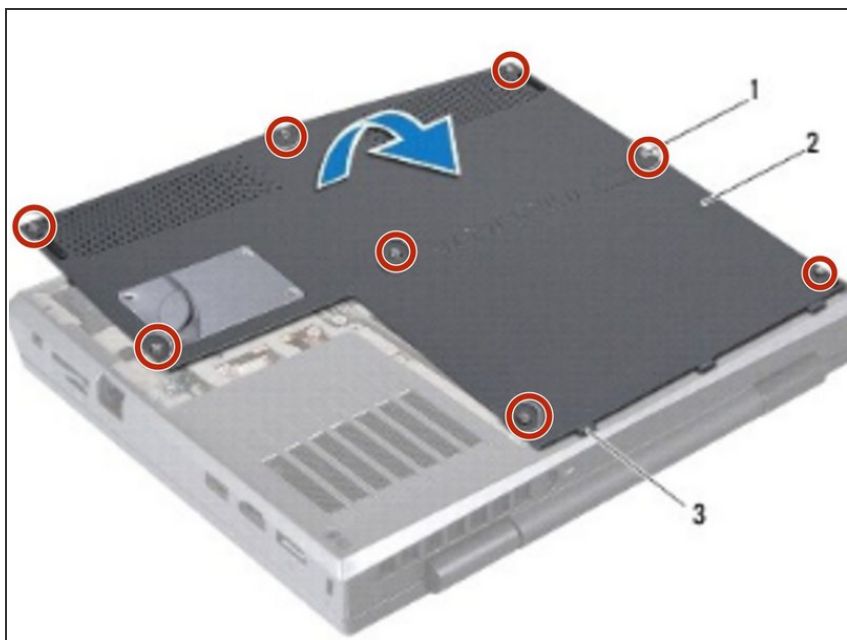


⚠ WARNING: Before working inside your computer, read the safety information that shipped with your computer.

⚠ CAUTION: To avoid electrostatic discharge, ground yourself by using a wrist grounding strap or by periodically touching an unpainted metal surface (such as a connector on your computer).

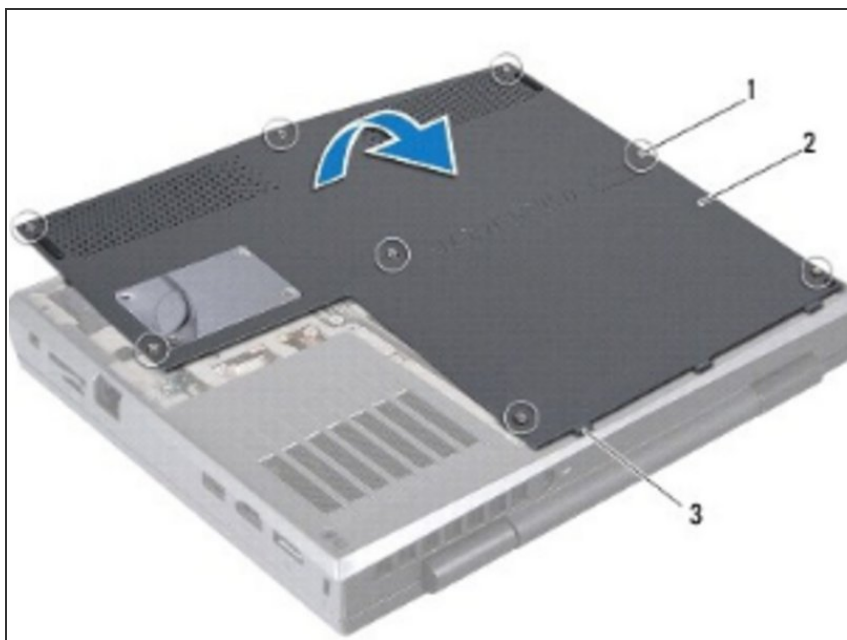
- Turn the computer over.

Step 2 — Loosen the Screws



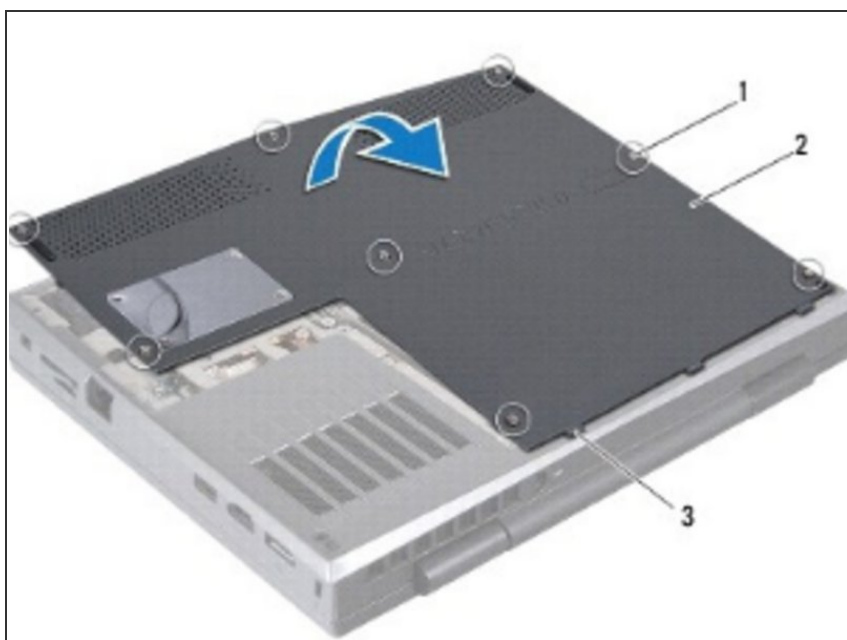
- Loosen the eight captive screws that secure the base cover to the computer base.

Step 3 — Lifting the Base Cover



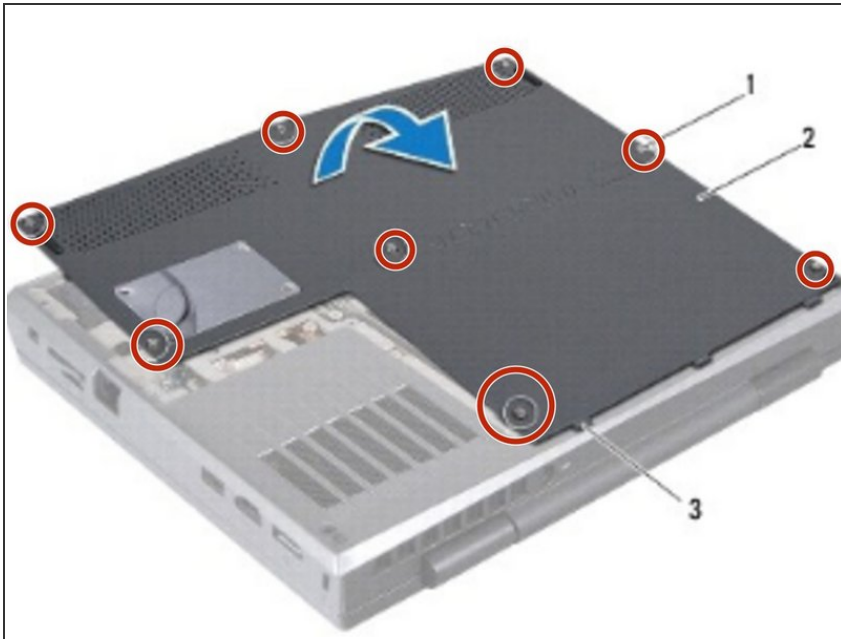
- Lift the base cover off the computer base.

Step 4 — Replacing the Base Cover



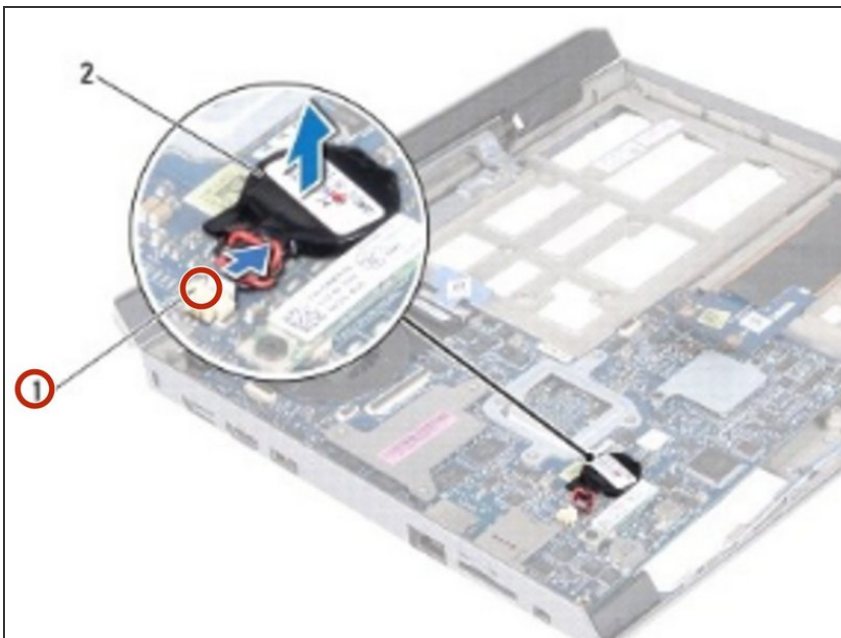
- Align the tabs on the **NEW** base cover with the slots on the computer base and place the base cover in position.

Step 5 — Securing the Screws



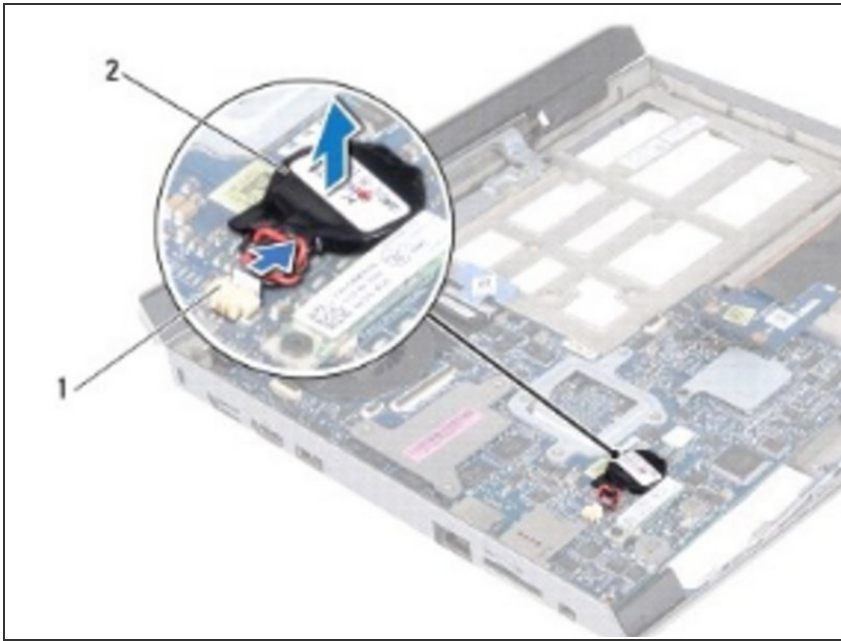
- Tighten the eight screws that secure the base cover to the computer base.

Step 6 — Disconnecting Coin-Cell Battery



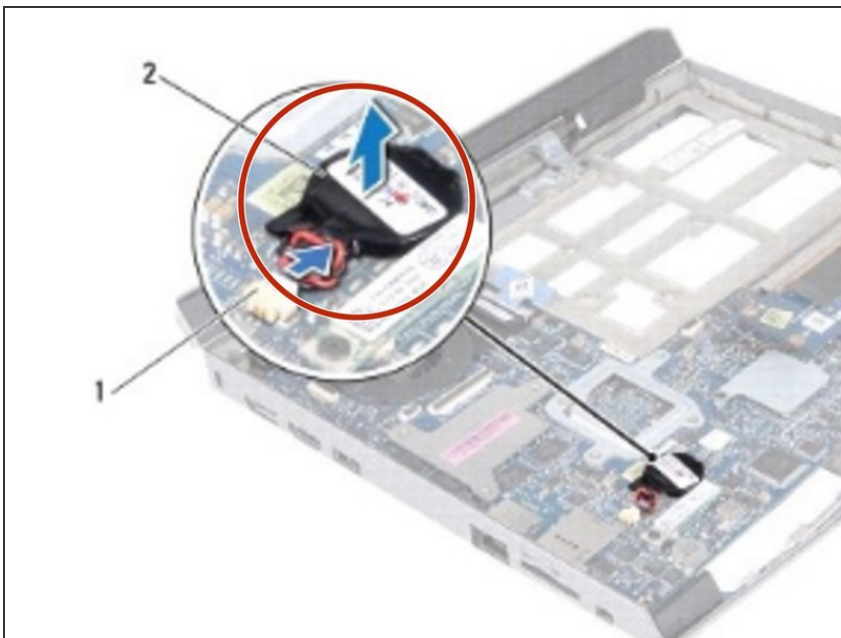
- ⚠ **WARNING:** Before working inside your computer, read the safety information that shipped with your computer.
- ⚠ **CAUTION:** To avoid electrostatic discharge, ground yourself by using a wrist grounding strap or by periodically touching an unpainted metal surface (such as a connector on your computer).
- Disconnect the coin-cell battery cable from the connector on the system board.

Step 7 — Prying The Coin-Cell Battery



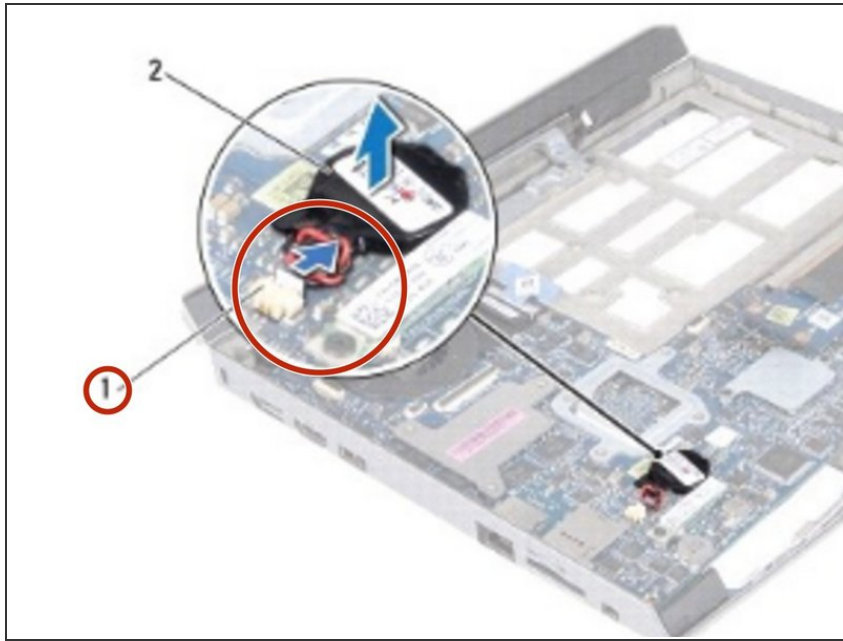
- The coin-cell battery is glued to the system board. Using a plastic scribe, pry the coin-cell battery from the system board.

Step 8 — Placing New Coin-Cell Battery



- Use the adhesive on **NEW** the coin-cell battery and adhere it to the system board.

Step 9 — Connecting Cable



- Connect the coin-cell battery cable to the connector on the system board.

To reassemble your device, follow these instructions in reverse order.