



Written By: Terrence15



---

## INTRODUCTION

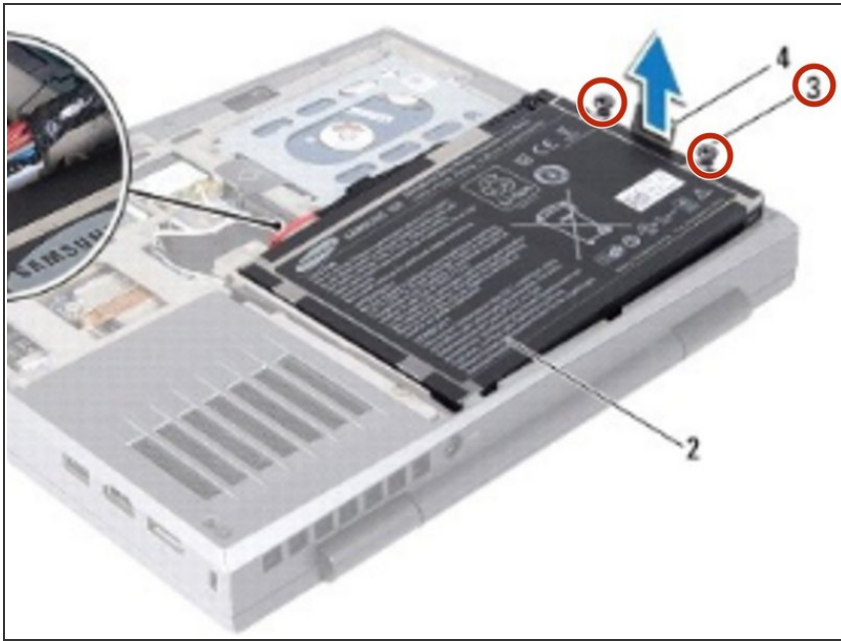
In this guide, we will be showing you how to remove and replace the Memory Modules.



### TOOLS:

- [Phillips #0 Screwdriver](#) (1)
-

## Step 1 — Removing Screws



**⚠ WARNING:** Before working inside your computer, read the safety information that shipped with your computer.

**⚠ CAUTION:** To avoid electrostatic discharge, ground yourself by using a wrist grounding strap or by periodically touching an unpainted metal surface (such as a connector on your computer)

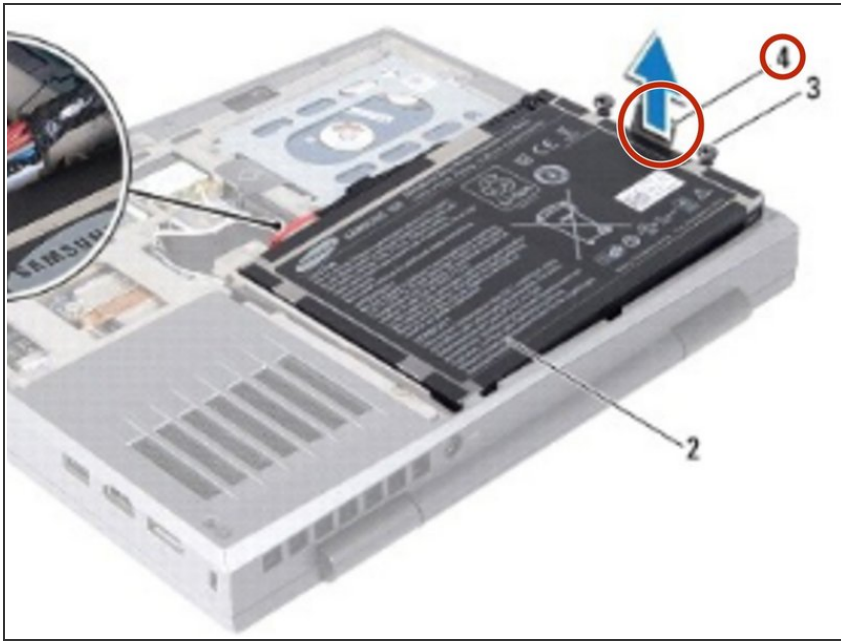
- Remove the two screws that secure the battery pack to the computer base.

## Step 2 — Disconnecting cable



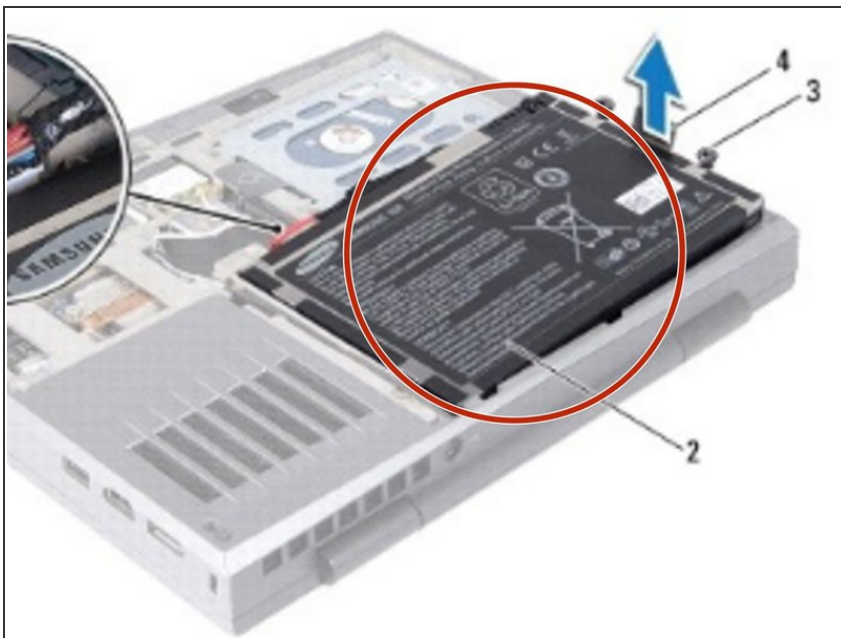
- Disconnect the battery pack cable from the connector on the system board.

### Step 3 — Lifting Battery Pack



- Using the pull-tab, lift the battery pack off the computer base.

### Step 4 — Placing New Battery Pack



- Place the **NEW** battery pack in the battery bay and replace the two screws that secure the battery pack to the computer base.

## Step 5 — Routing Battery Pack



- Route the battery pack cable in the routing guide

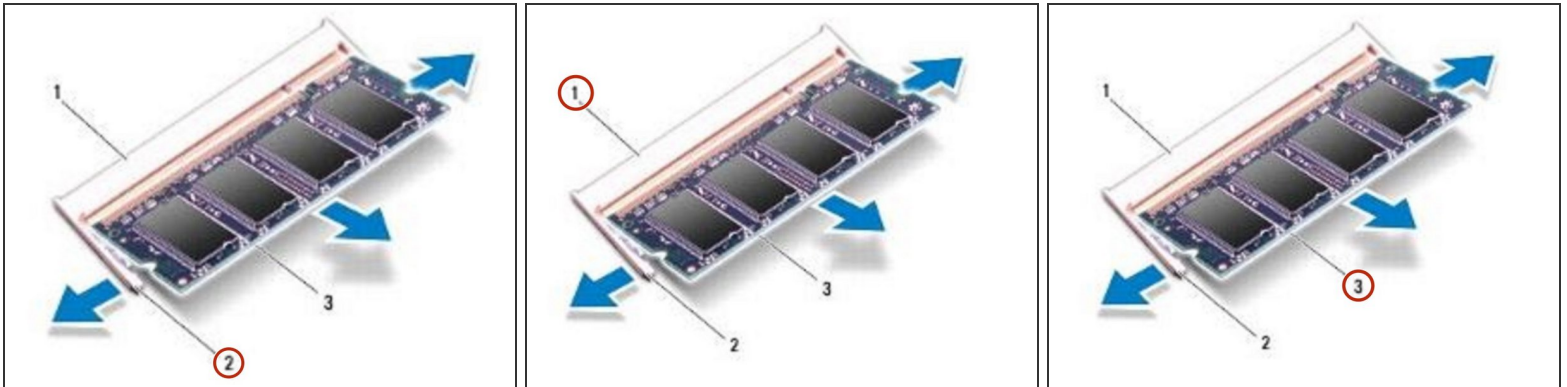
## Step 6 — Connecting Battery Pack



- Connect the battery pack cable to the connector on the system board.

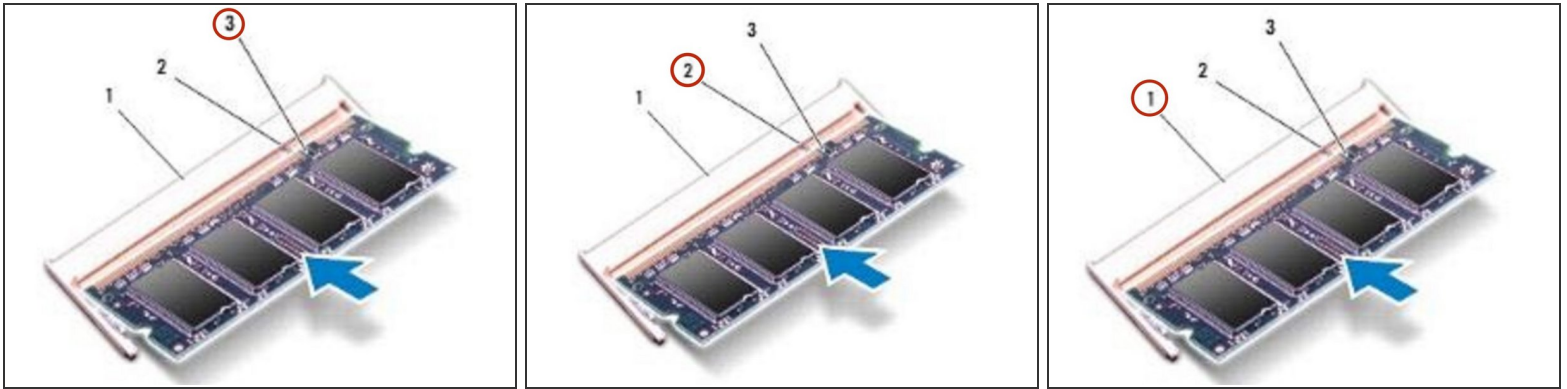


## Step 7 — Popping up the Memory Module



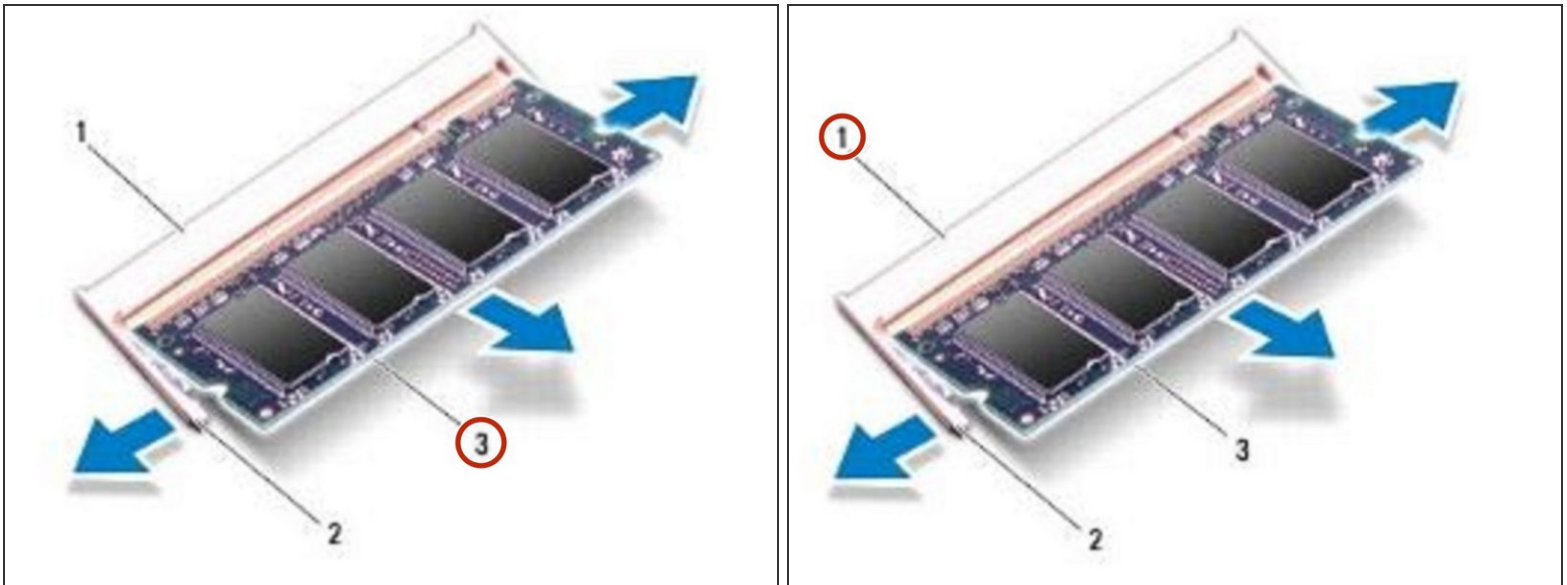
- ⚠ WARNING:** Before working inside your computer, read the safety information that shipped with your computer.
- ⚠ CAUTION:** To avoid electrostatic discharge, ground yourself by using a wrist grounding strap or by periodically touching an unpainted metal surface (such as a connector on your computer).
- ⚠ CAUTION:** To prevent damage to the memory-module connector, do not use tools to spread the memory module securing clips. 1memory-module connector2securing clips (2) 3memory module
- NOTE:** If you need to install memory modules in two connectors, install a memory module in the lower connector before you install a memory module in the upper connector.
- Use your fingertips to carefully spread apart the securing clips on each end of the memory-module connector until the memory module pops up.

## Step 8 — Align the Notch



- NOTE: If you need to install memory modules in two connectors, install a memory module in the lower connector before you install a memory module in the upper connector.
- Align the notch in the **NEW** memory module with the tab in the memory-module connector.

## Step 9 — Securing the Memory Module



- Slide the memory module firmly into the connector at a 45-degree angle, and press the memory module down until it clicks into place. If you do not hear the click, remove the memory module and reinstall it.

**i** NOTE: If the memory module is not installed properly, the computer may not boot.

To reassemble your device, follow these instructions in reverse order.