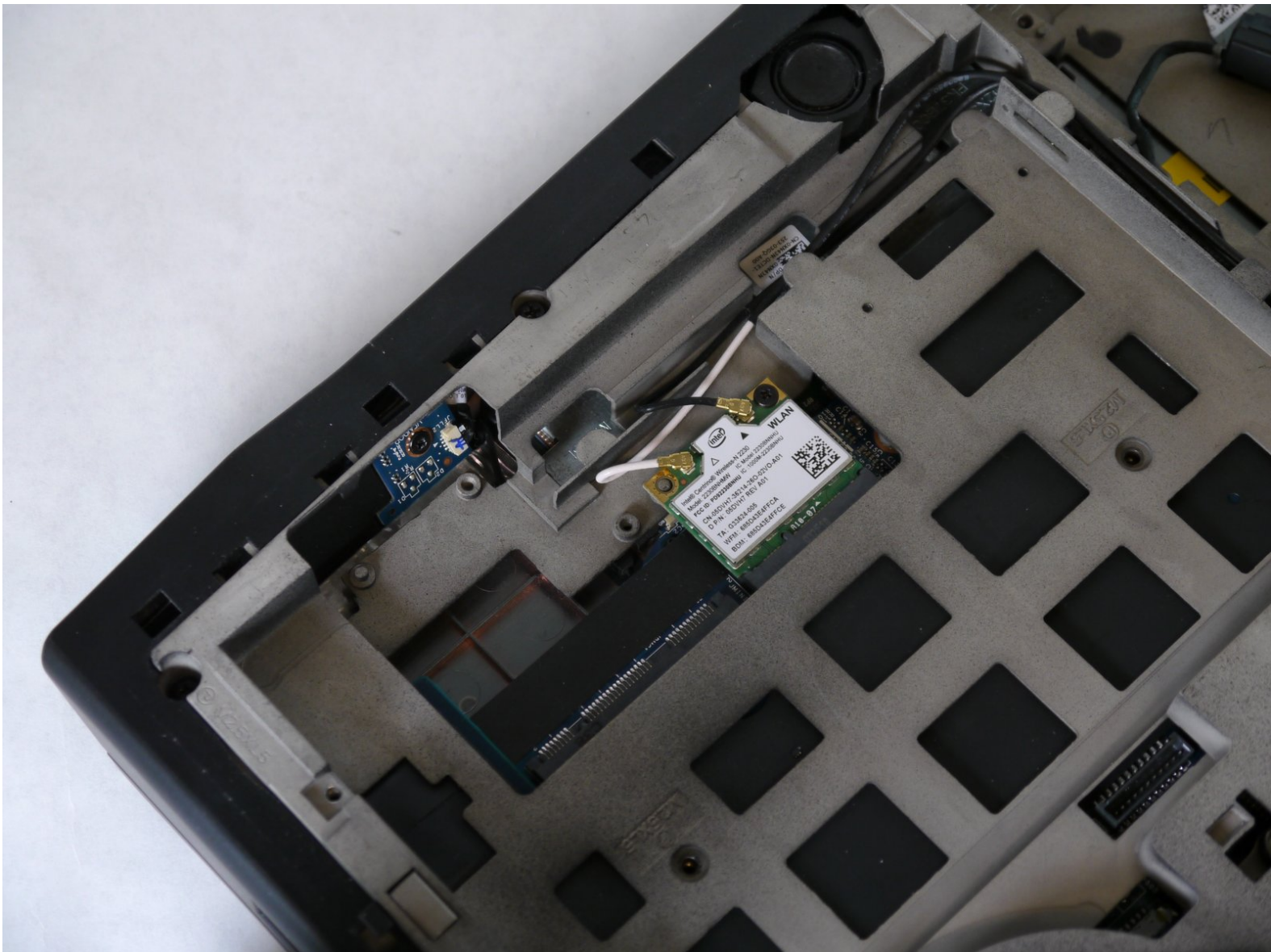




# Alienware M14x R2 Wi-Fi Card Replacement

The replacement of the Wi-Fi card will help better the internet connection when not working.

Written By: angel ventura



## INTRODUCTION

This guide will show you how to safely remove the Wi-Fi card from the laptop. In order to remove the Wi-Fi card you need to first remove the battery.



### TOOLS:

- [Phillips #1 Screwdriver](#) (1)



### PARTS:

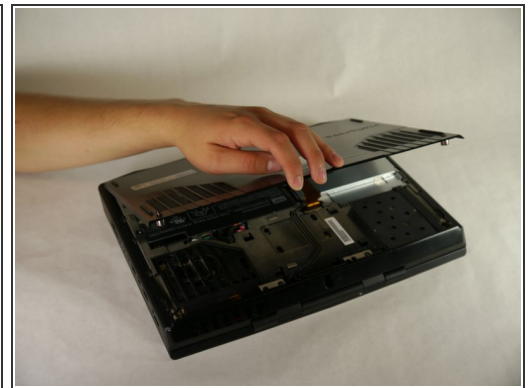
- [Alienware M14x-R2 \(P18G\) Wi-Fi Board](#) (1)

## Step 1 — Battery



- Turn the computer off.
- Disconnect the charging cable from the computer.
- ⚠ Failure to unplug the charging cable could result in electric shock and serious injury.
- Flip the computer upside down.

## Step 2



- Loosen the two 6.35 mm size 1 Phillips screws on the back cover.
- ⓘ The two screws are spring loaded and will not separate from the cover.
- Slide the back cover towards you and then lift upwards to remove.

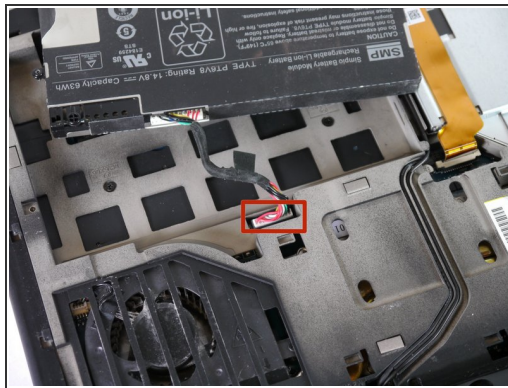
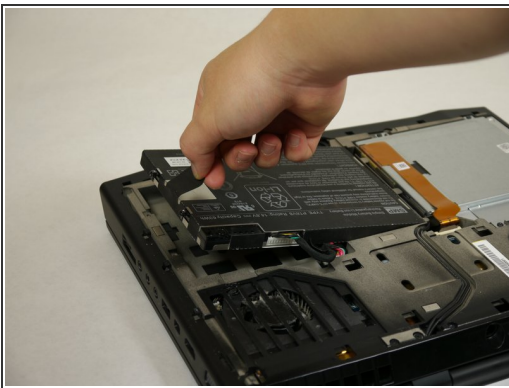


## Step 3



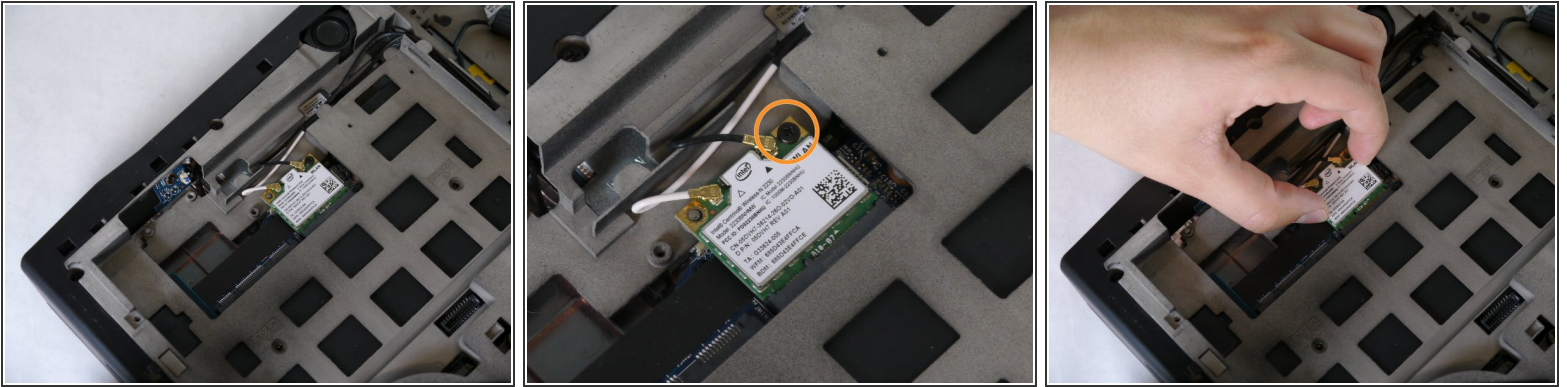
- Loosen the two 6.35 mm size 1 Philips screws attaching the battery to the laptop.
- ⓘ The two screws are clipped into the battery and will not detach.

## Step 4



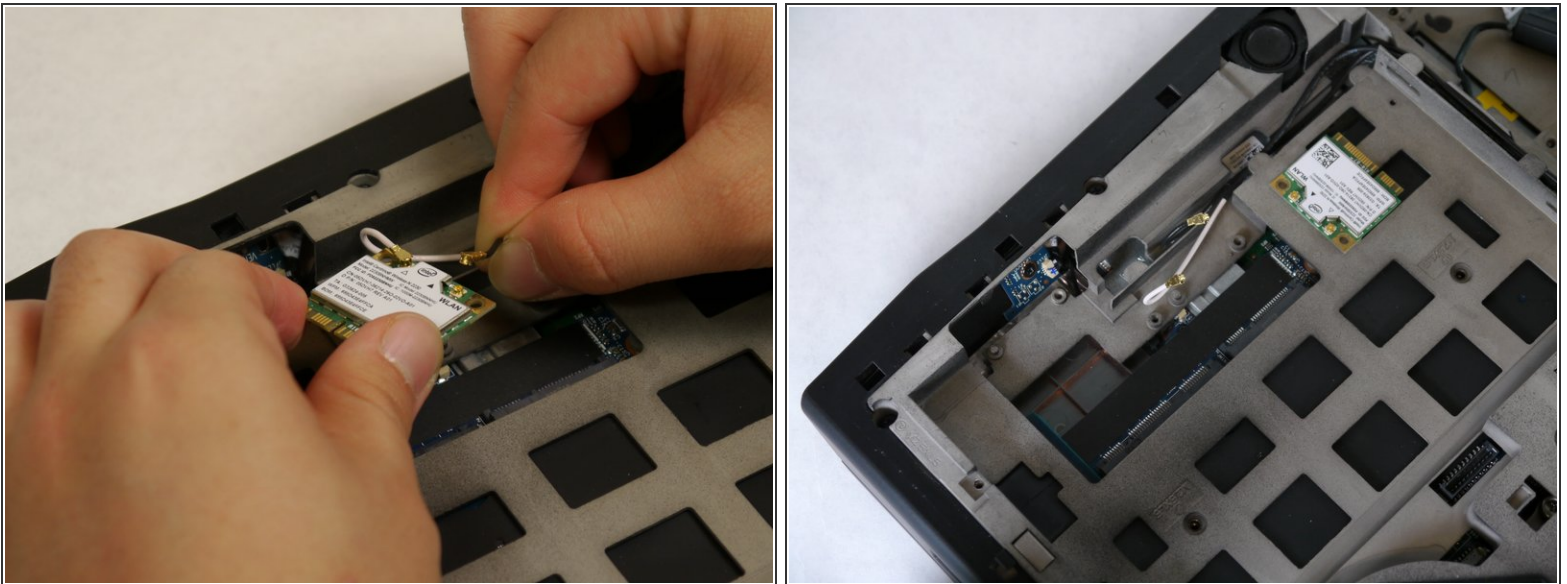
- Pull up on the black tab on the battery to reveal the connection between the battery and laptop.
- Pull up on the white connector to disconnect it from the laptop.
- The battery is now free to remove from the laptop and can be set aside.

## Step 5 — Wi-Fi card



- Locate the wi-fi card underneath the battery and unscrew the 3.175 mm size 1 screw.
- Lift the wi-fi card up and away from the laptop for easier access and handling of the wi-fi card.

## Step 6



- Lift the gold connectors at the end of each wire up and away from the wi-fi card to detach both antennas, which are the black and white cables, from the wi-fi card.
- Set aside the now free wi-fi card.

To reassemble your device, follow these instructions in reverse order.