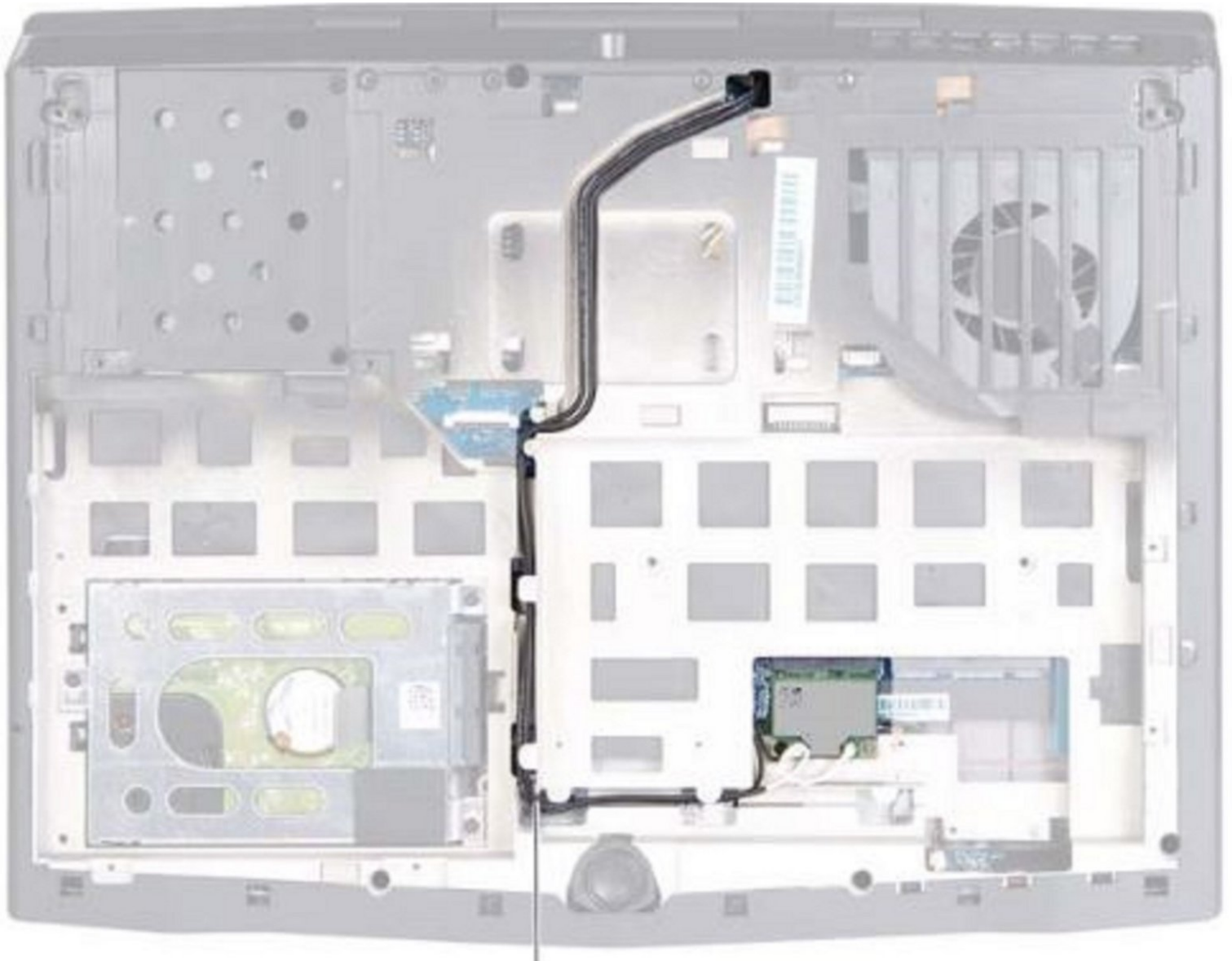




# Alienware M14xR2 Display Assembly Replacement

How to replace the display assembly in a Alienware M14xR2.

Written By: Terrence15



---

# INTRODUCTION

In this guide, we will show you how to remove and replace the Display Assembly.



## TOOLS:

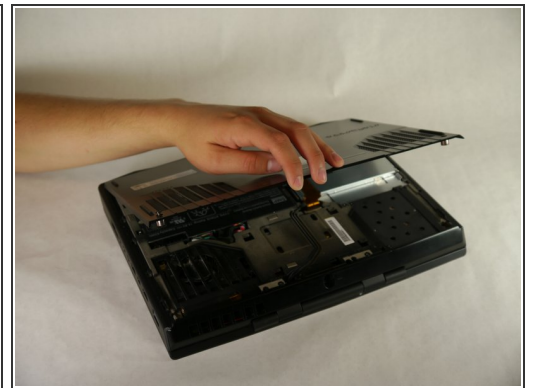
- [Phillips #1 Screwdriver](#) (1)
  - [Spudger](#) (1)
-

## Step 1 — Battery



- Turn the computer off.
- Disconnect the charging cable from the computer.
- ⚠ Failure to unplug the charging cable could result in electric shock and serious injury.
- Flip the computer upside down.

## Step 2



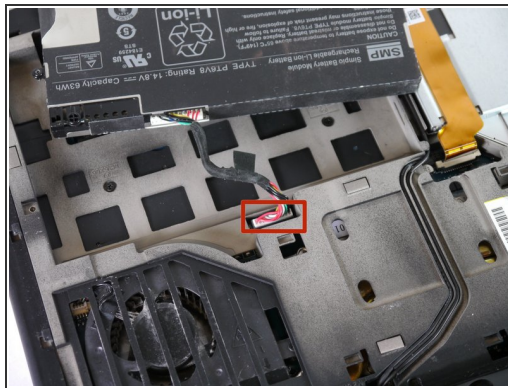
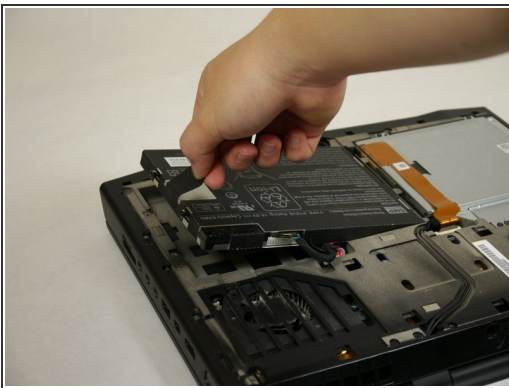
- Loosen the two 6.35 mm size 1 Phillips screws on the back cover.
- ⓘ The two screws are spring loaded and will not separate from the cover.
- Slide the back cover towards you and then lift upwards to remove.

## Step 3



- Loosen the two 6.35 mm size 1 Philips screws attaching the battery to the laptop.
- ⓘ The two screws are clipped into the battery and will not detach.

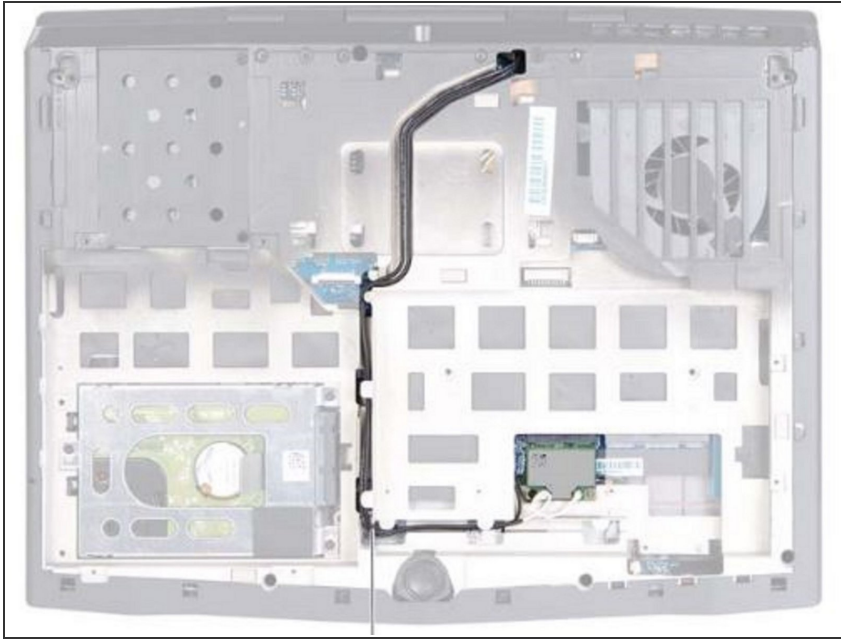
## Step 4



- Pull up on the black tab on the battery to reveal the connection between the battery and laptop.
- Pull up on the white connector to disconnect it from the laptop.
- The battery is now free to remove from the laptop and can be set aside.



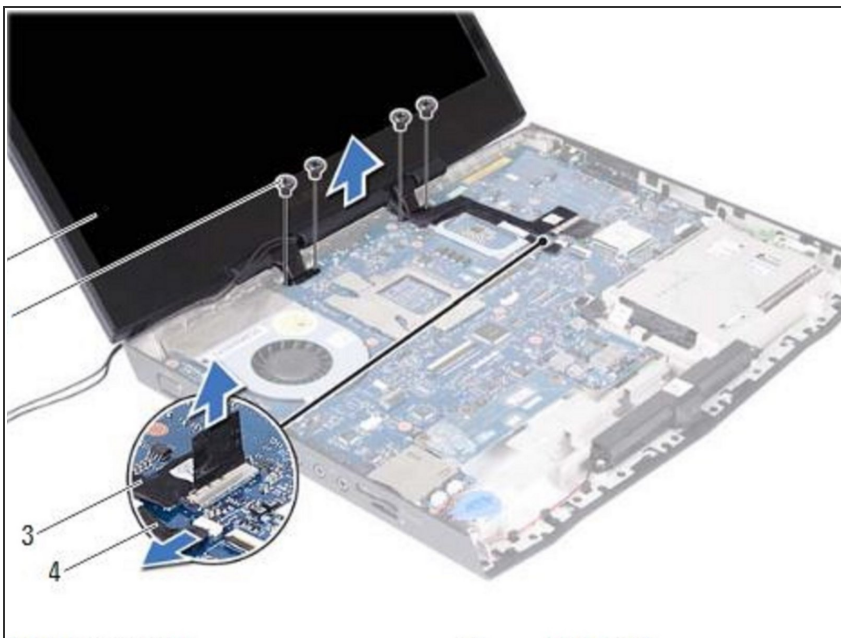
## Step 5 — Removing the Mini-Card Antenna Cables



**⚠ WARNING:** Before working inside your computer, read the safety information that shipped with your computer and follow the steps in [Before You Begin](#).

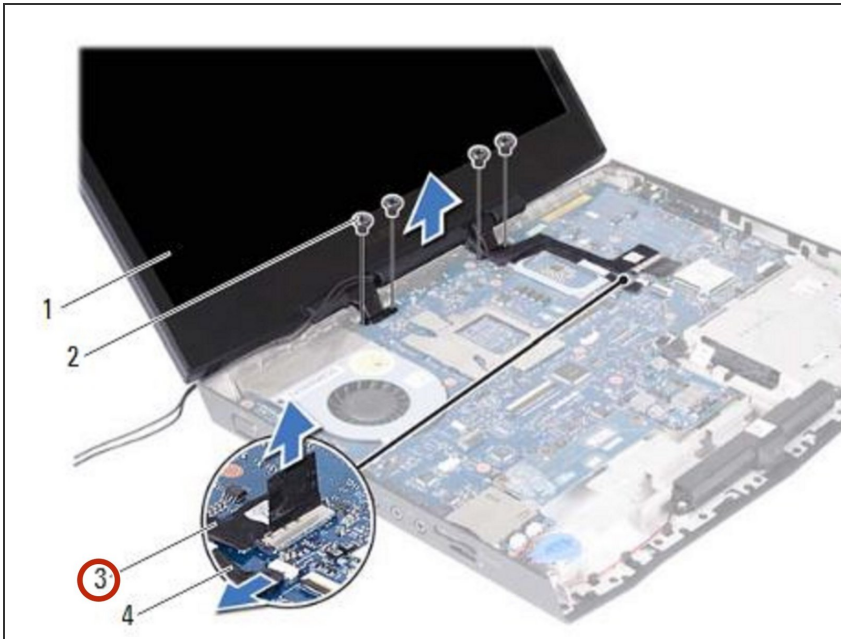
- Note the routing of the WirelessHD card (optional) and mini-card antenna cables and remove them from the routing guides on the computer base.

## Step 6 — Turn the Computer Over



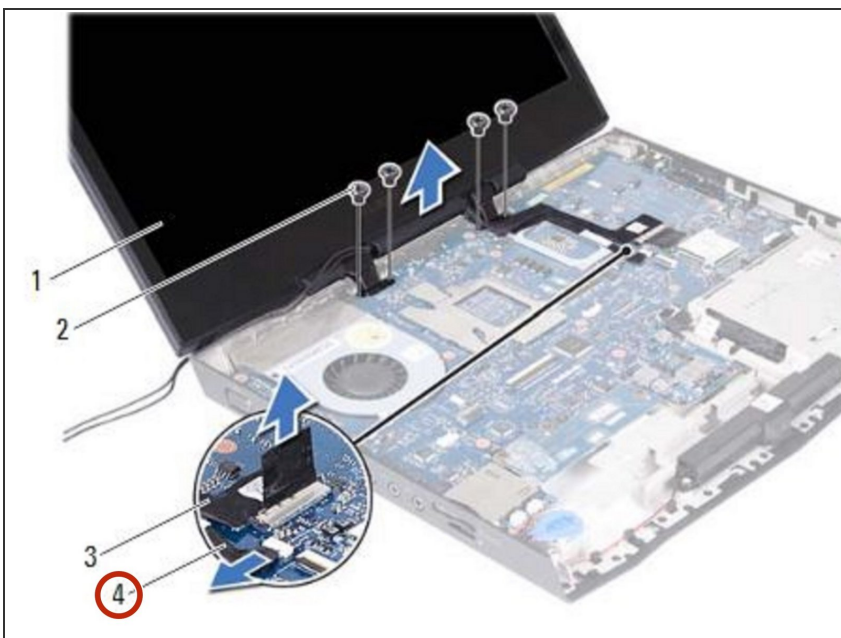
- i NOTE:** The WirelessHD card is optional and may not be present in your computer.
- Turn the computer over and open the display as far as possible.

## Step 7 — Disconnecting the Display Cable



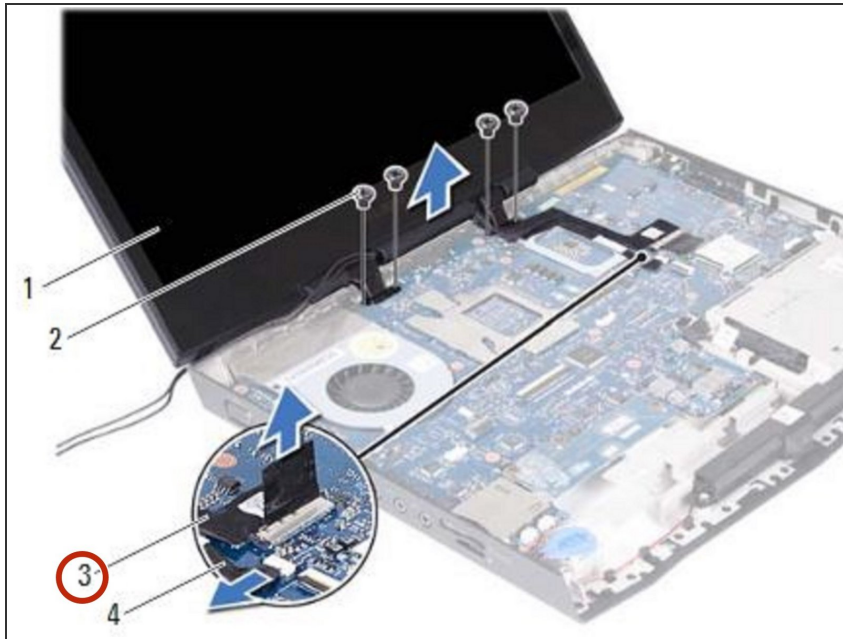
- **i** Make sure the Center-Control Cover, the Keyboard and the Palm-Rest Assembly are removed.
- Using the pull-tab, disconnect the display cable from the connector on the system board.

## Step 8 — Disconnecting the Logo-Board Cable



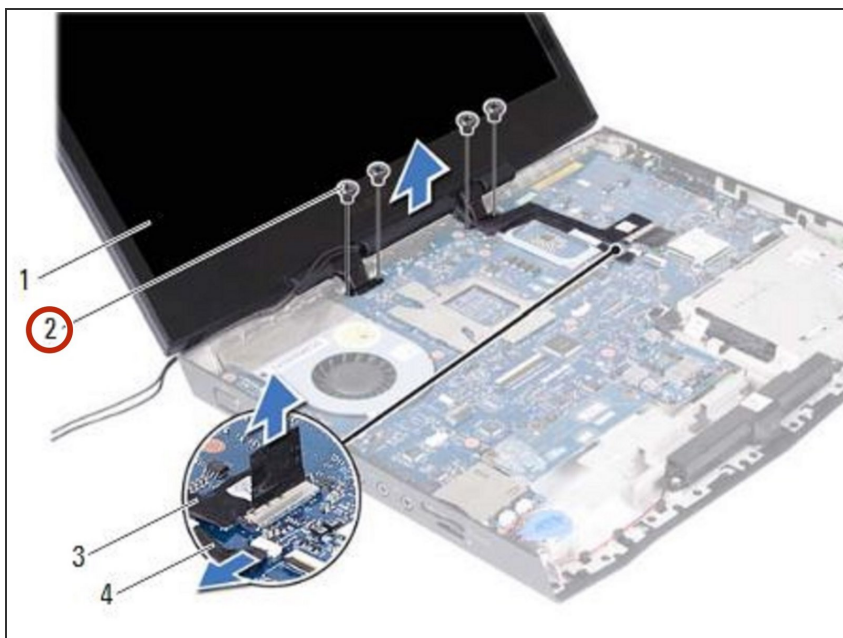
- Disconnect the logo-board cable from the connector on the system board.

## Step 9 — Peeling the Display Cable



- Gently peel the display cable and the logo-board cable from the system board.

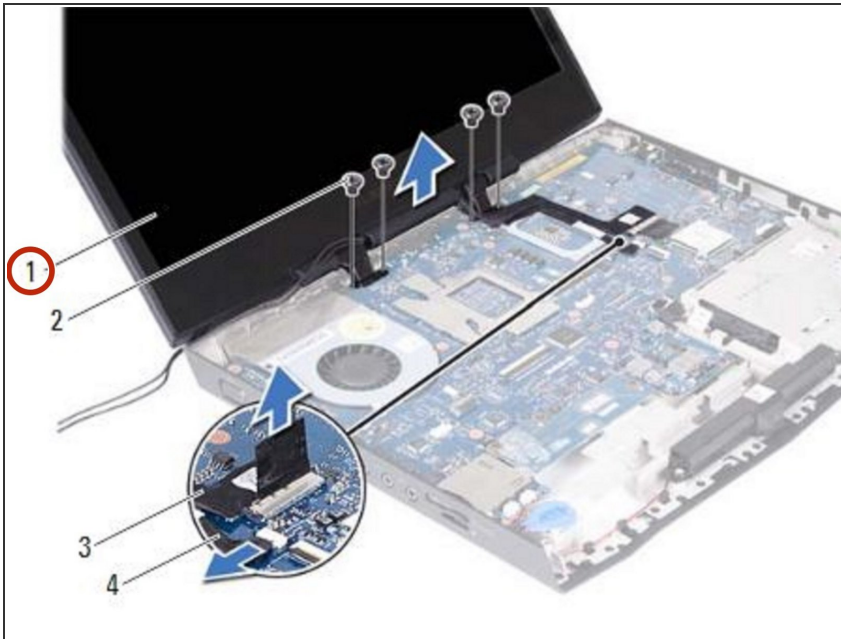
## Step 10 — Remove the Screws



- Remove the screws that secure the display assembly to the computer base.

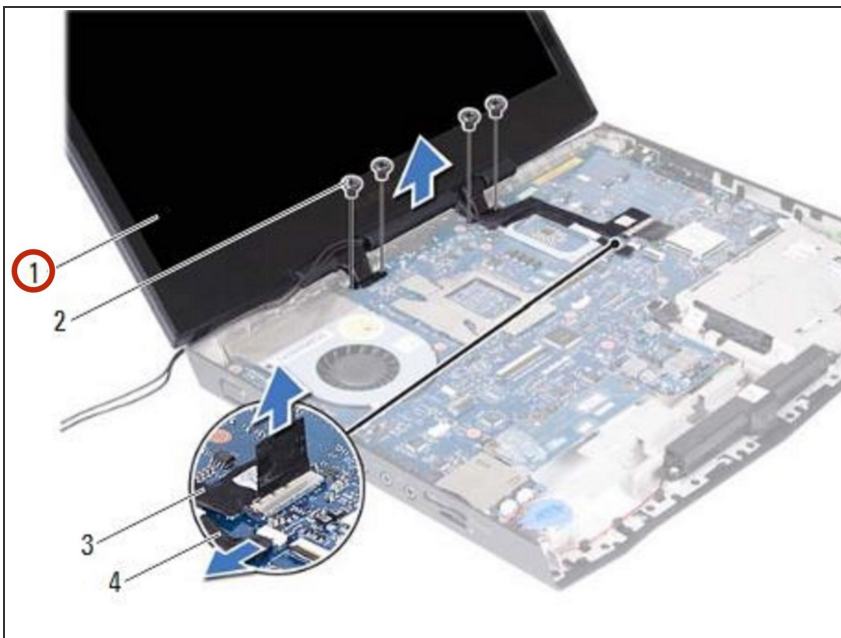



## Step 11 — Lifting the Display Assembly



- Gently slide the WirelessHD (optional) and mini-card antenna cables out through the slot on the computer base.
- Lift the display assembly off the computer.

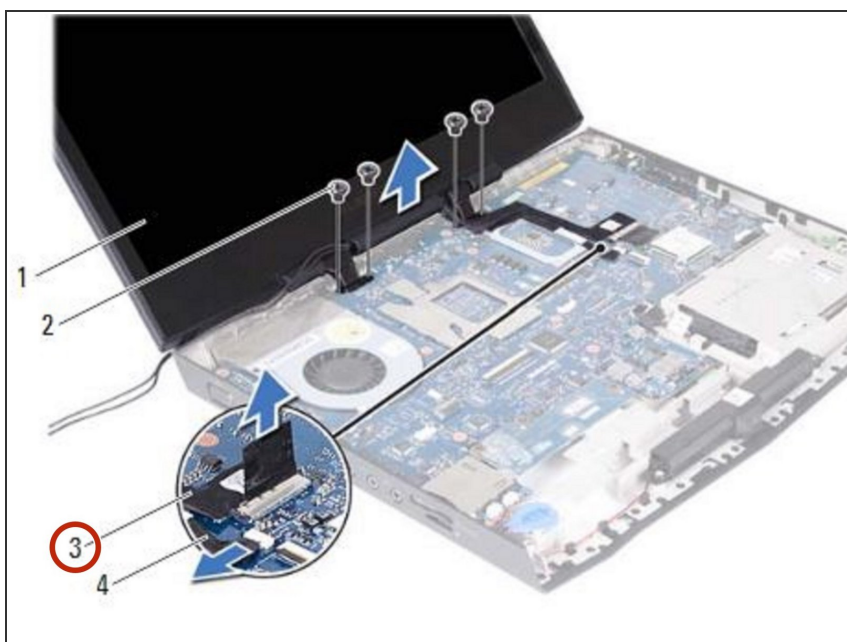
## Step 12 — Placing the Display Assembly



- Slide the WirelessHD (optional) and mini-card antenna cables through the slot on the computer base.
  - Place the **NEW** display assembly in position and replace the screws that secure the display assembly to the computer base.
-  **NOTE:** Ensure that no cables lie between the display assembly and the computer base.



## Step 13 — Connecting the Display Cable



- Connect the display cable and the logo-board cable to the connectors on the system board.

To reassemble your device, follow these instructions in reverse order.