



Alienware M14xR2 Hard Drive Replacement

This guide will show you how to access and replace the hard drive for the Alienware M14xR2 laptop.

Written By: Connor Bovee



INTRODUCTION

This guide will show you how to safely access and replace the hard drive for the Alienware M14xR2 laptop. Before replacing the hard drive you will need to remove the battery and the CD drive.



TOOLS:

- [Phillips #1 Screwdriver](#) (1)



PARTS:

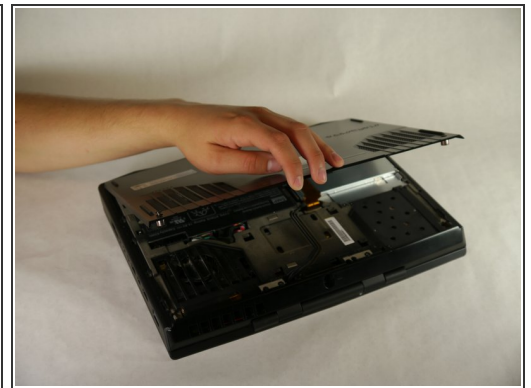
- [Alienware M14x-R2 \(P18G\) HDD Enclosure](#) (1)
- [Alienware M14x-R2 \(P18G\) SATA Cable](#) (1)

Step 1 — Battery



- Turn the computer off.
- Disconnect the charging cable from the computer.
- ⚠ Failure to unplug the charging cable could result in electric shock and serious injury.
- Flip the computer upside down.

Step 2



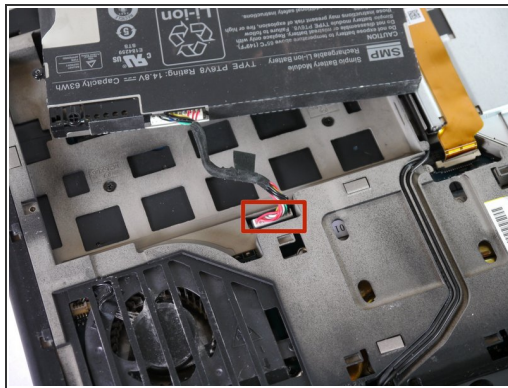
- Loosen the two 6.35 mm size 1 Phillips screws on the back cover.
- ⓘ The two screws are spring loaded and will not separate from the cover.
- Slide the back cover towards you and then lift upwards to remove.

Step 3



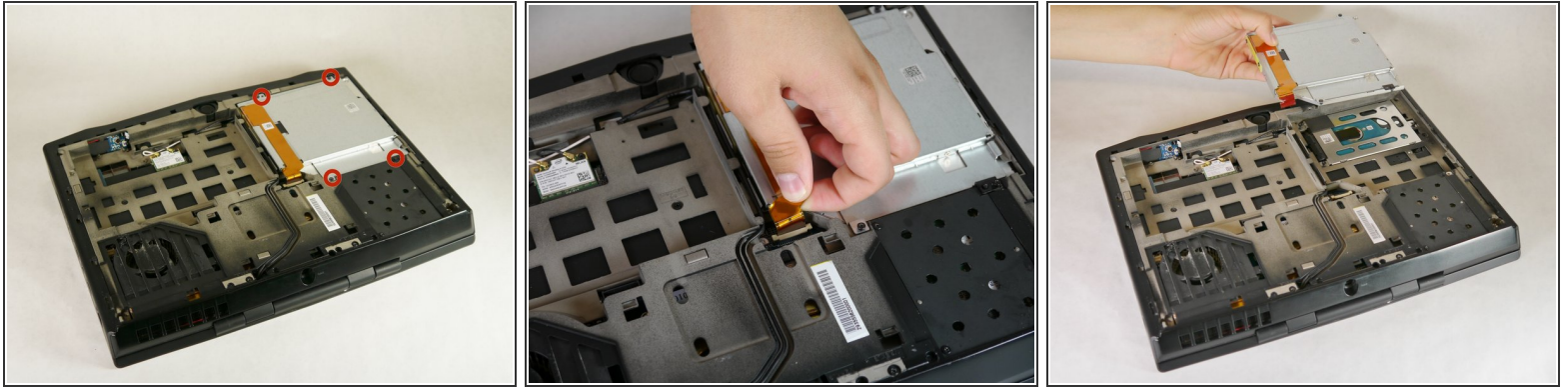
- Loosen the two 6.35 mm size 1 Philips screws attaching the battery to the laptop.
- ⓘ The two screws are clipped into the battery and will not detach.

Step 4



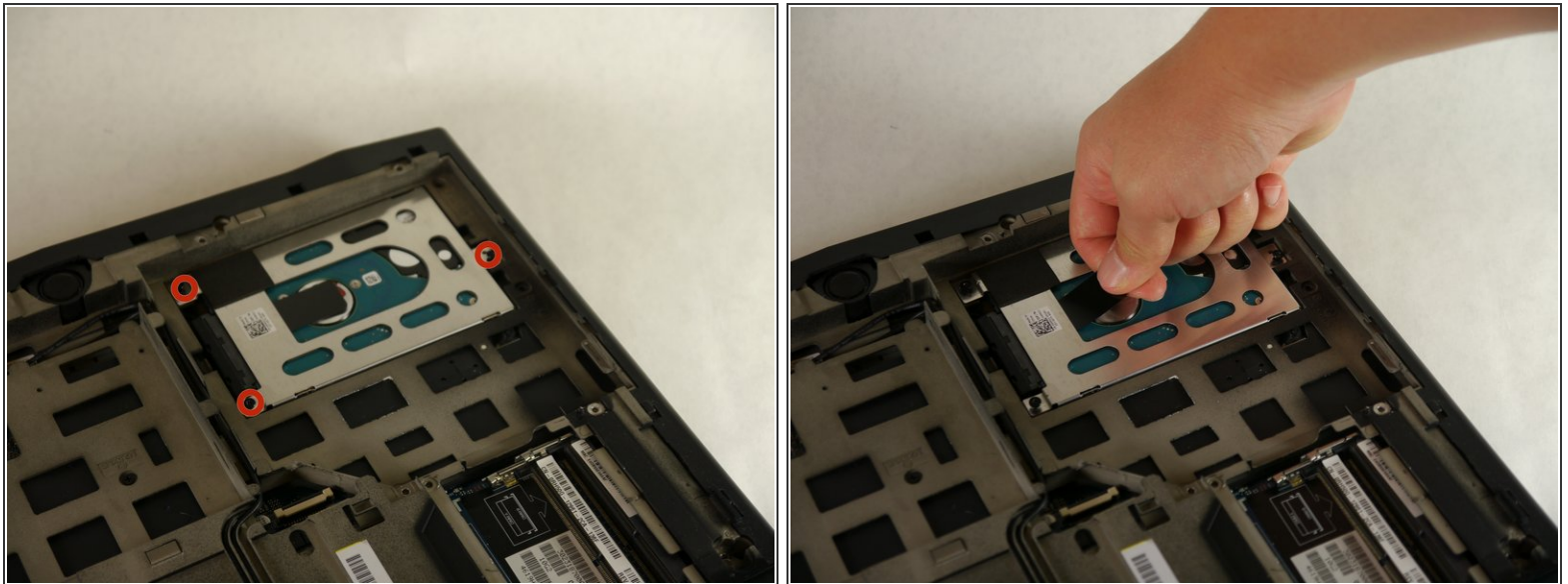
- Pull up on the black tab on the battery to reveal the connection between the battery and laptop.
- Pull up on the white connector to disconnect it from the laptop.
- The battery is now free to remove from the laptop and can be set aside.

Step 5 — Optical Drive



- Unscrew the four 6.35 mm size 1 screws.
- Pull up on the end of the orange tab to detach it from the white connector.
- Lift the optical drive up and out of the laptop and set it aside.

Step 6 — Hard Drive



- Loosen the three 6.35 mm size 1 screws to release the hard drive from the rest of the laptop.
- ⓘ The screws are spring loaded and will not come loose from the hard drive assembly.
- ⚠ Pull up on the black tab gently as there is still a cable attaching the hard drive to the computer.

Step 7



- Pull the connector that is attached to the cable at the end of the hard drive out and away from the hard drive to detach it.
- Set aside the now disconnected hard drive.

To reassemble your device, follow these instructions in reverse order.