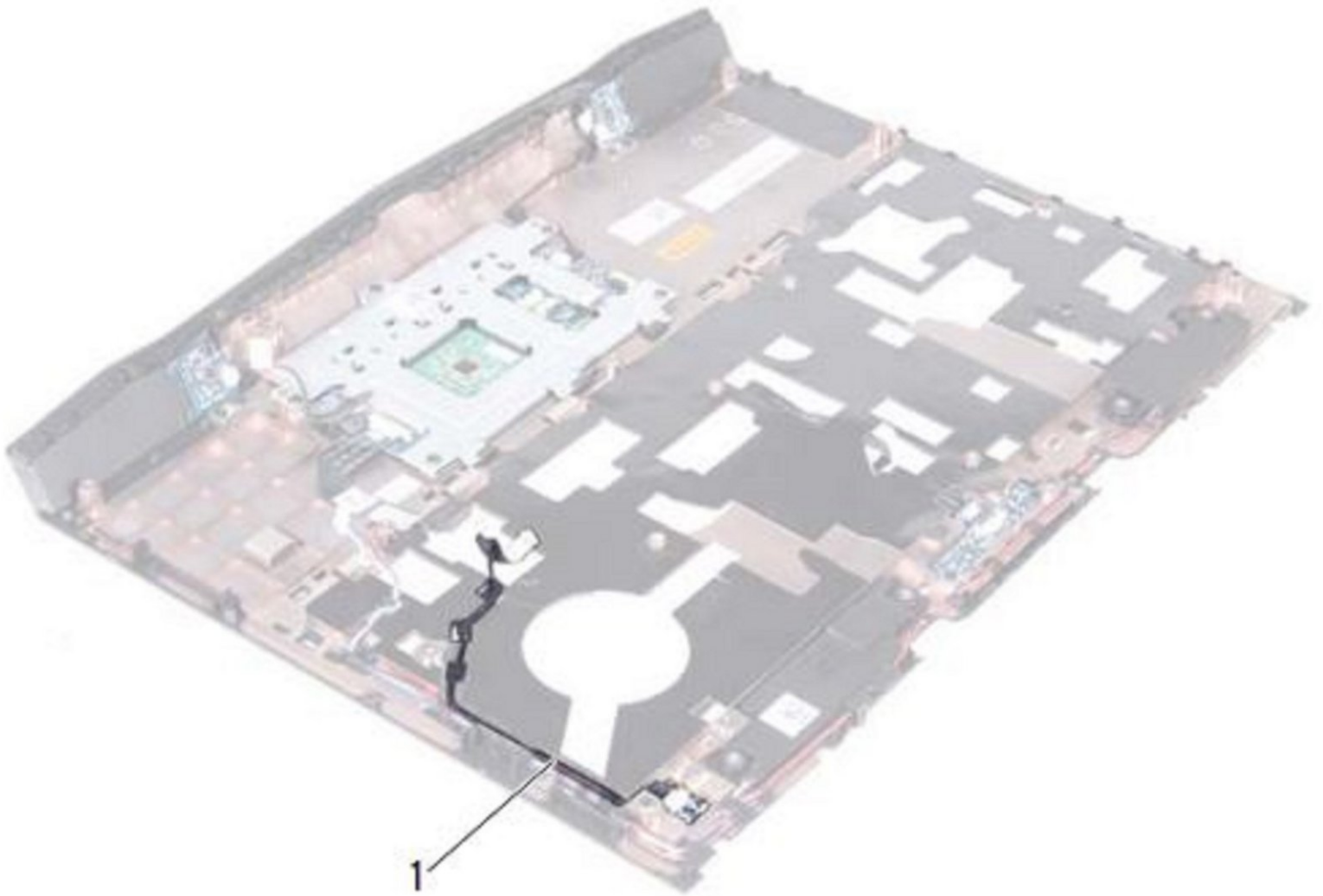




Alienware M14xR2 Status-Light Board Replacement

How to replace the LED PCB in a Alienware M14xR2.

Written By: Terrence15



INTRODUCTION

In this guide, we will show you how to remove and replace the Status-Light Board.



TOOLS:

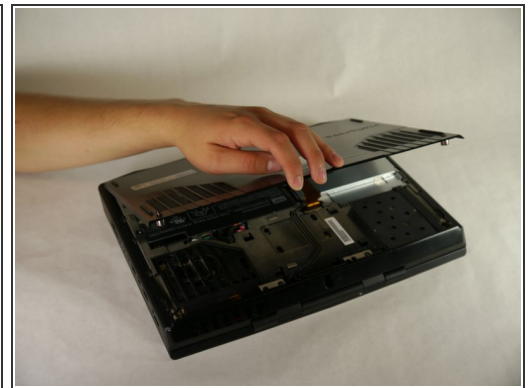
- [Phillips #1 Screwdriver](#) (1)
 - [Spudger](#) (1)
-

Step 1 — Battery



- Turn the computer off.
- Disconnect the charging cable from the computer.
- ⚠ Failure to unplug the charging cable could result in electric shock and serious injury.
- Flip the computer upside down.

Step 2



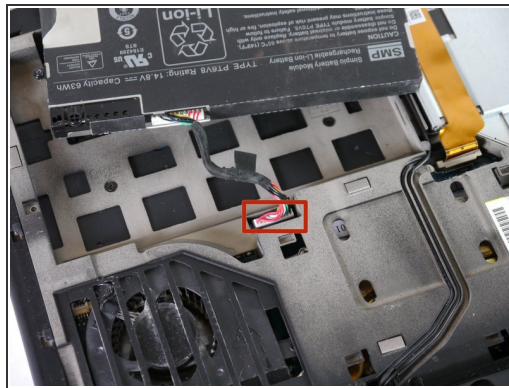
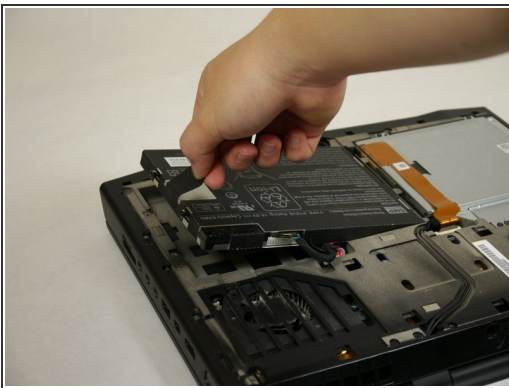
- Loosen the two 6.35 mm size 1 Phillips screws on the back cover.
- ⓘ The two screws are spring loaded and will not separate from the cover.
- Slide the back cover towards you and then lift upwards to remove.

Step 3



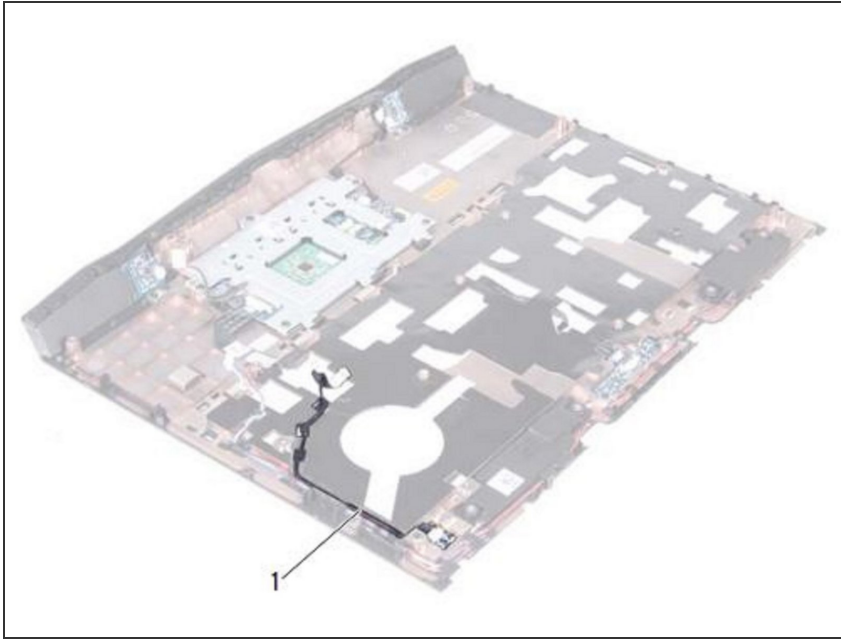
- Loosen the two 6.35 mm size 1 Philips screws attaching the battery to the laptop.
- ⓘ The two screws are clipped into the battery and will not detach.

Step 4



- Pull up on the black tab on the battery to reveal the connection between the battery and laptop.
- Pull up on the white connector to disconnect it from the laptop.
- The battery is now free to remove from the laptop and can be set aside.

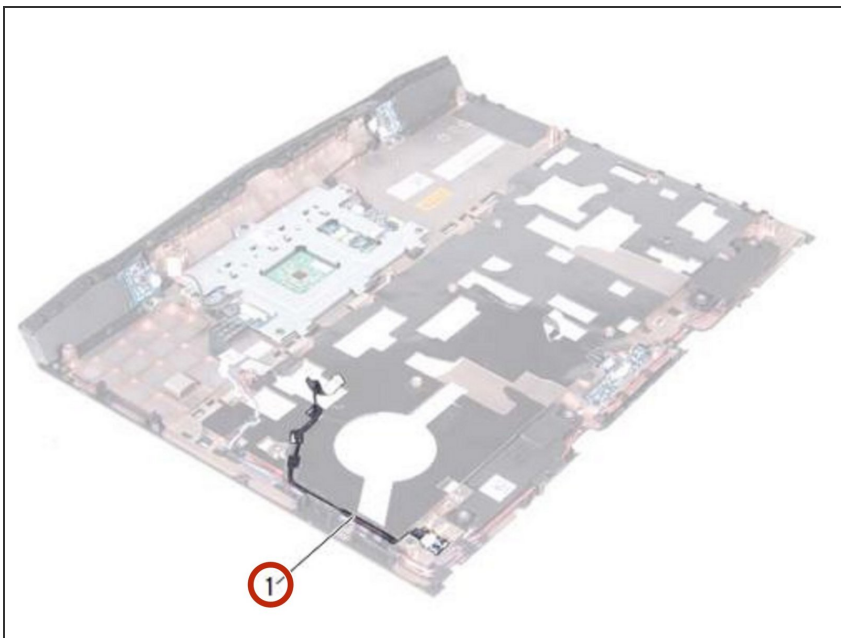
Step 5 — Turning the Palm-Rest Assembly Over



⚠ WARNING: Before working inside your computer, read the safety information that shipped with your computer and follow the steps in [Before You Begin](#).

- Turn the palm-rest assembly over.

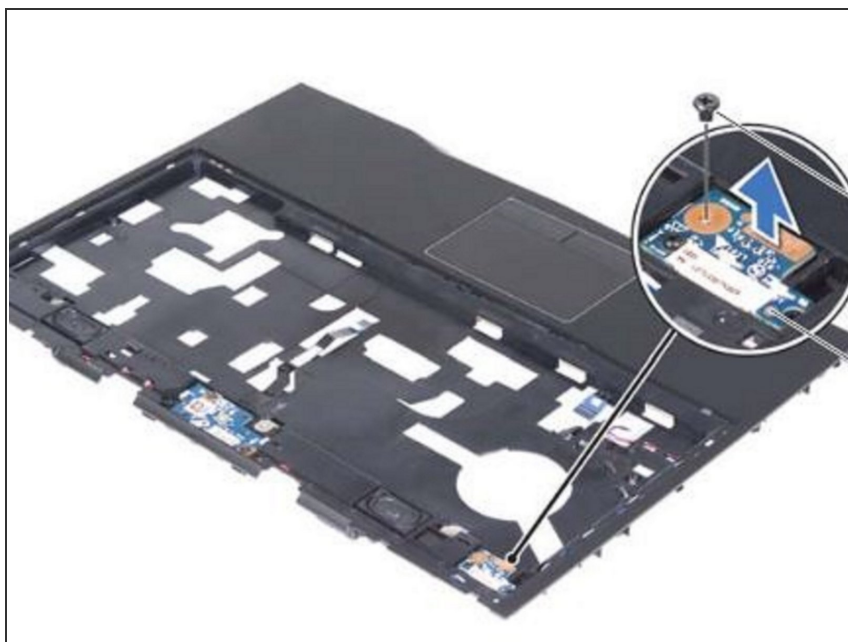
Step 6 — Remove the Cable



- Note the routing of status-light board cable and remove the cable from the routing guides.

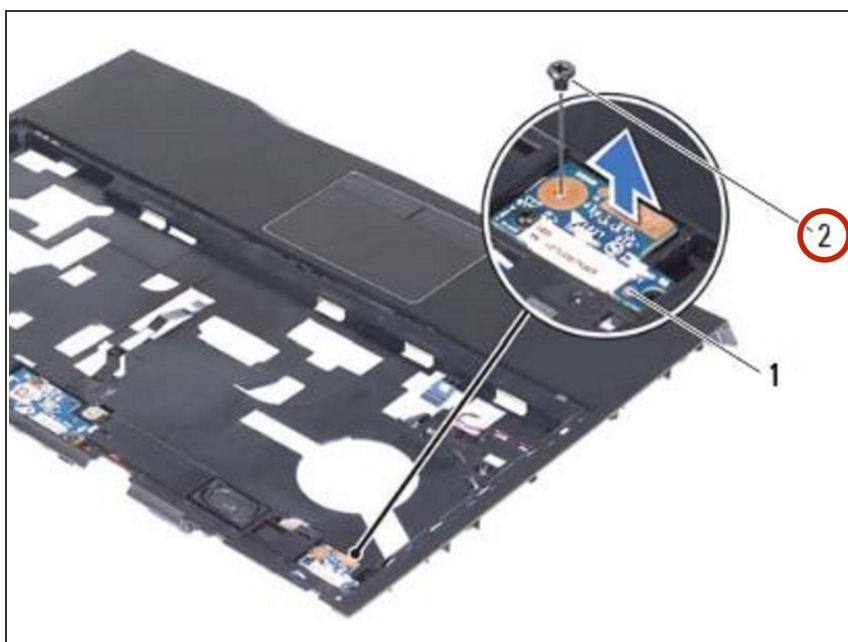
i NOTE: If the status-light board cable is under the speakers cable, remove the speakers cable first and then remove the status-light board cable.

Step 7 — Turn the Palm-Rest Assembly Over



- Turn the palm-rest assembly over.

Step 8 — Remove the Screw



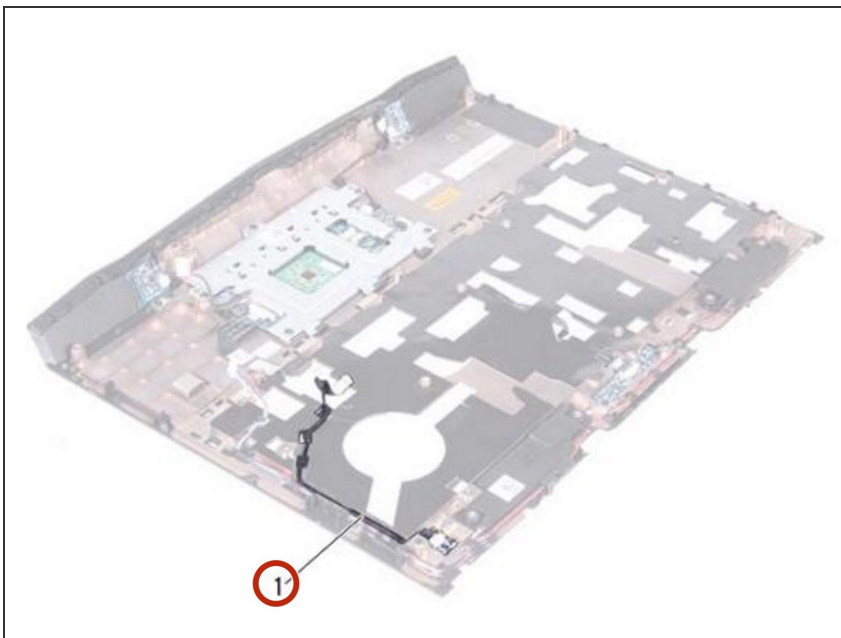
- Remove the screw that secures the status-light board to the palm-rest assembly.

Step 9 — Lifting the Status-Light Board



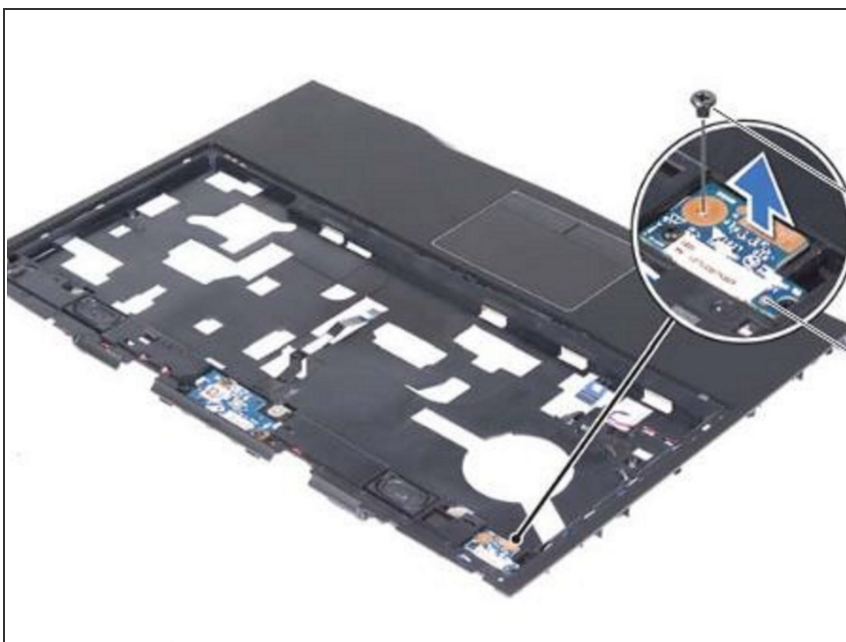
- Carefully lift the status-light board and release its cable from the slot on the palm-rest assembly.

Step 10 — Slide the Status-Light Board Cable



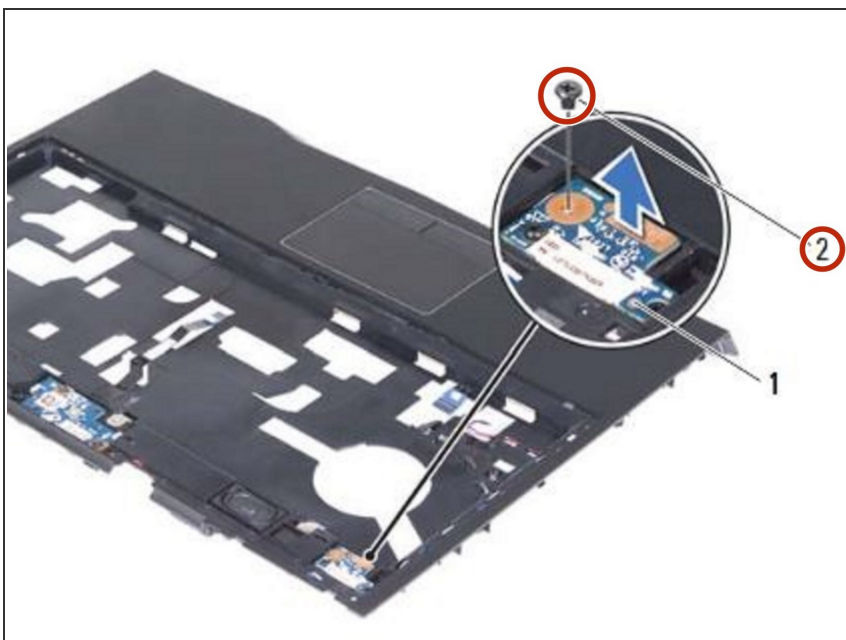
- Slide the **NEW** status-light board cable through the slot in the palm-rest assembly.

Step 11 — Align the Slot



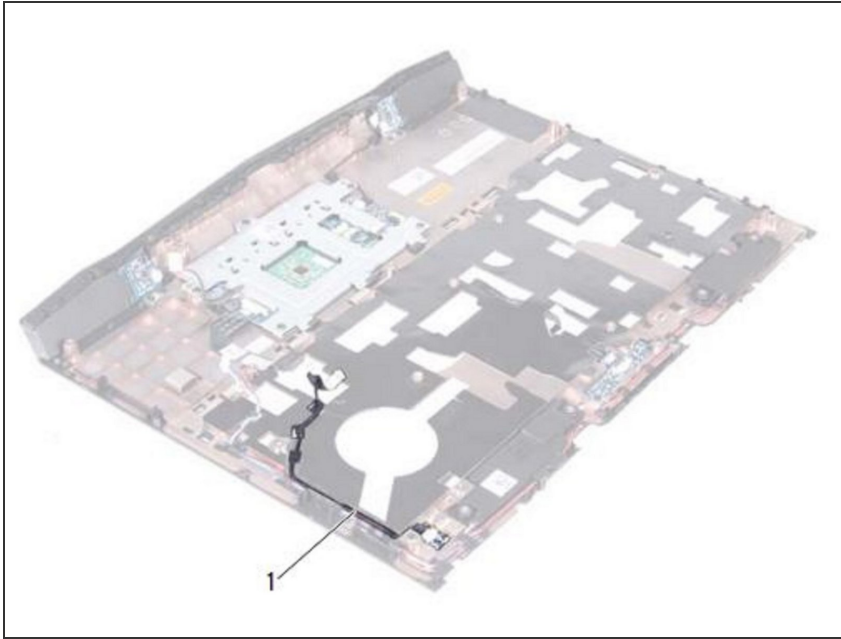
- Align the slot on the status-light board with the alignment post on the palm-rest assembly.

Step 12 — Replace the Screw



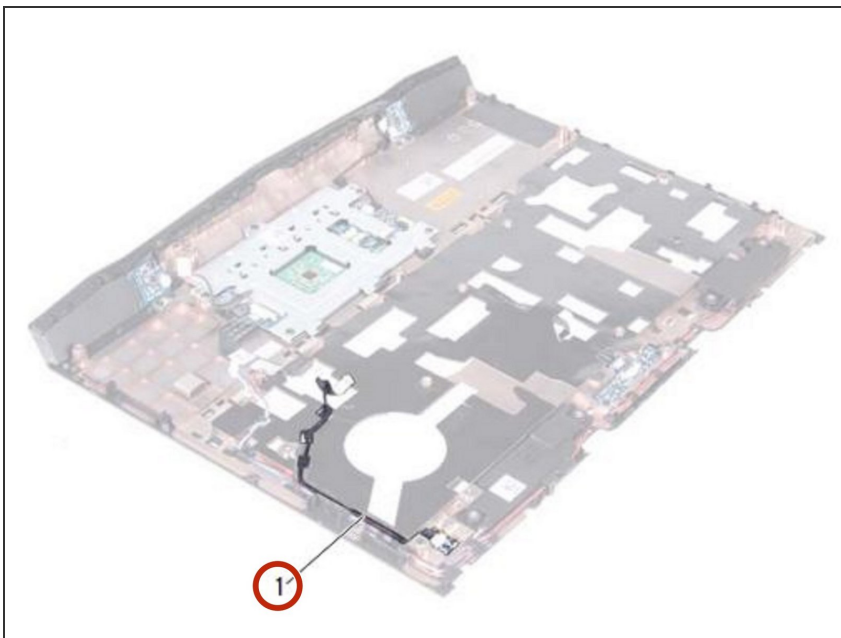
- Replace the screw that secures the status-light board to the palm-rest assembly.

Step 13 — Turning the Palm-Rest Assembly Over



- Turn the palm-rest assembly over.

Step 14 — Routing the Status-Light Board Cable



- Route the status-light board cable through the routing guides on the palm-rest assembly.

To reassemble your device, follow these instructions in reverse order.