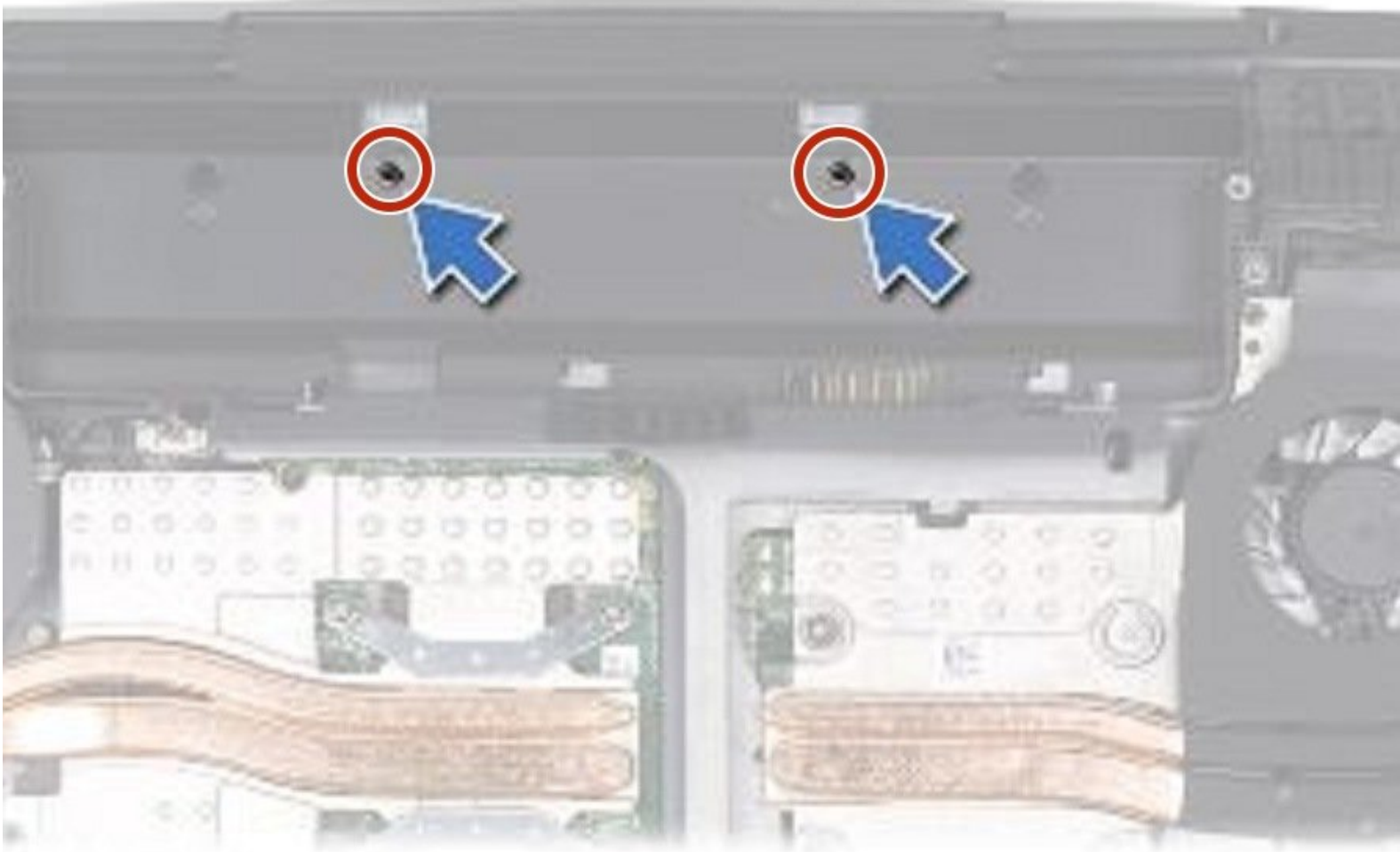




Alienware M15x Display Assembly Replacement

Written By: Terrence15



INTRODUCTION

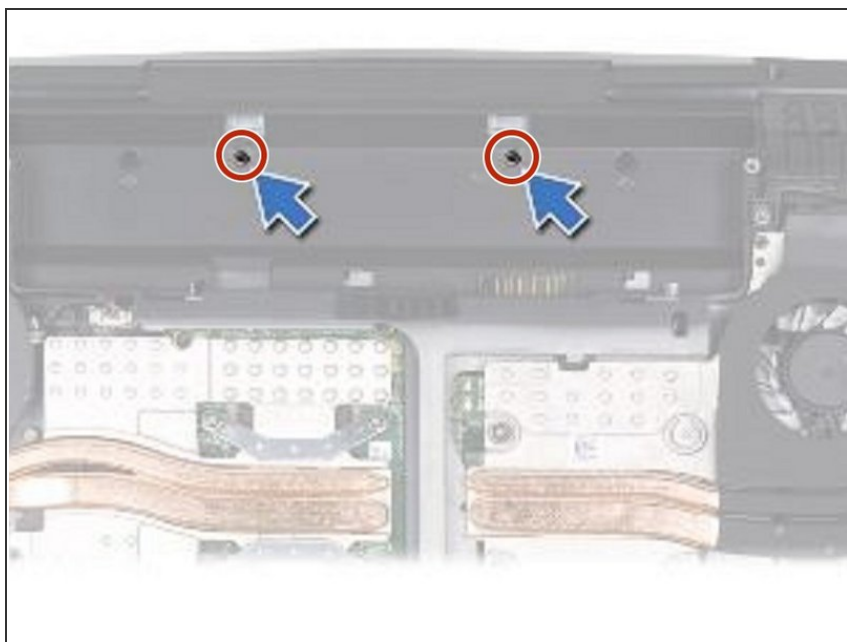
In this guide, we will show you how to remove and replace the Display Assembly.



TOOLS:

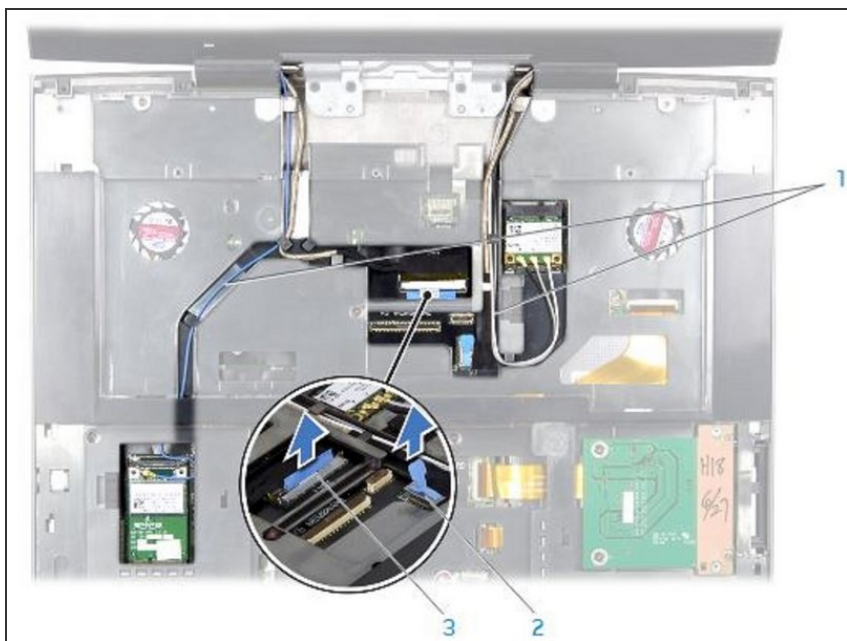
- [Essential Electronics Toolkit](#) (1)
-

Step 1 — Remove the Two Screws



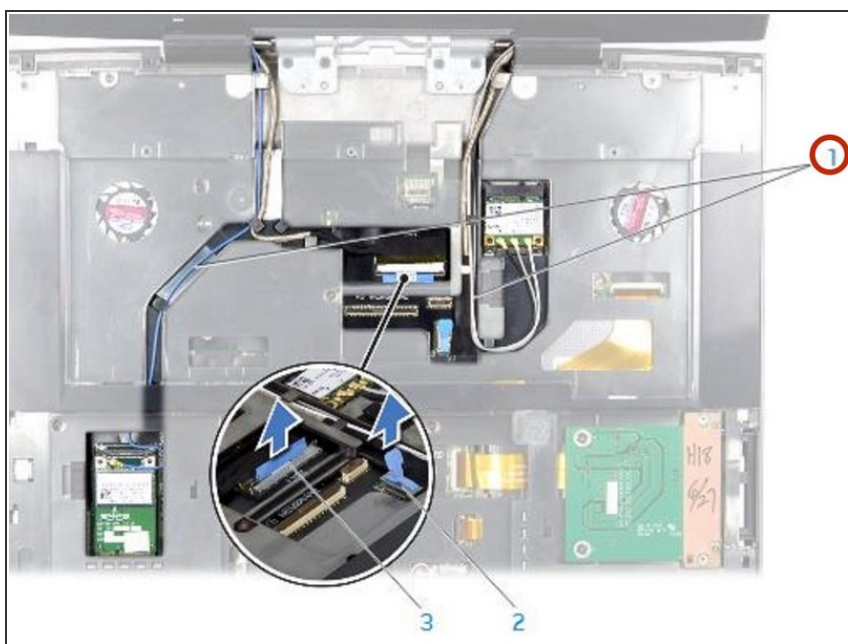
- WARNING:** Before working inside your computer, read the safety information that shipped with your computer.
- CAUTION:** To avoid electrostatic discharge, ground yourself by using a wrist grounding strap or by periodically touching an unpainted metal surface (such as a connector on the back of the computer).
- Remove the two screws from the battery bay.

Step 2 — Turn the Computer Up



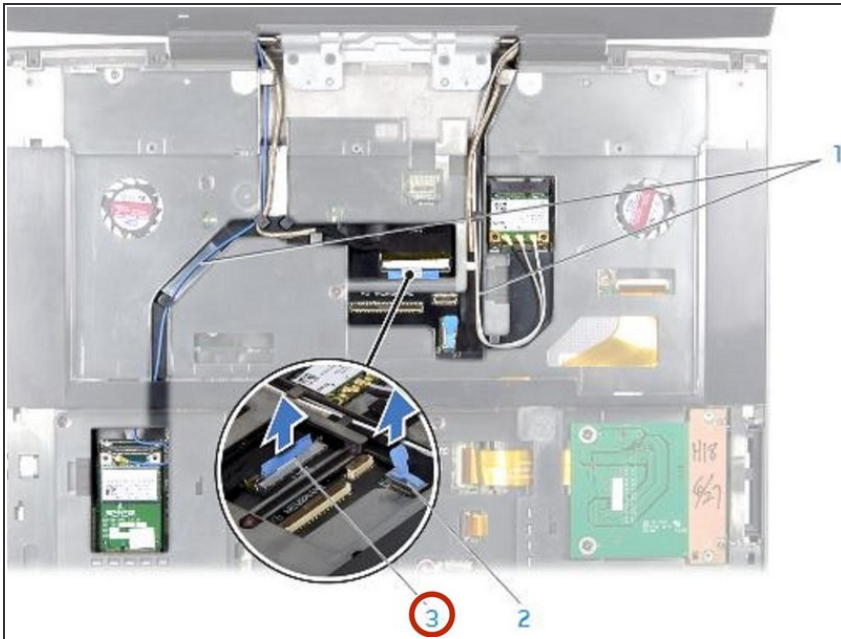
- Turn the computer top side up and open the display as far as possible.

Step 3 — Disconnect the Cables



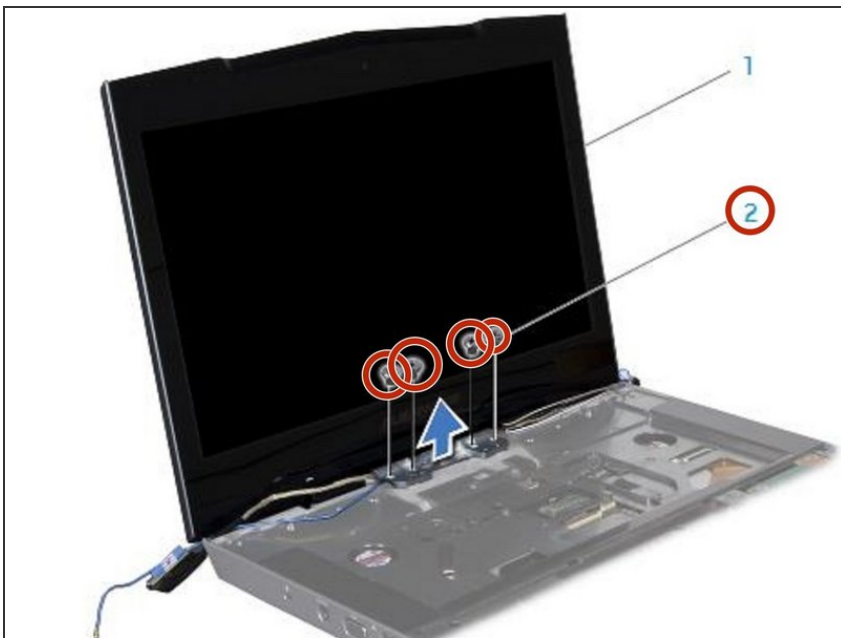
- Disconnect the antenna cables from the respective Mini-Cards and remove these cables from their routing guides.

Step 4 — Disconnecting the Display Cable



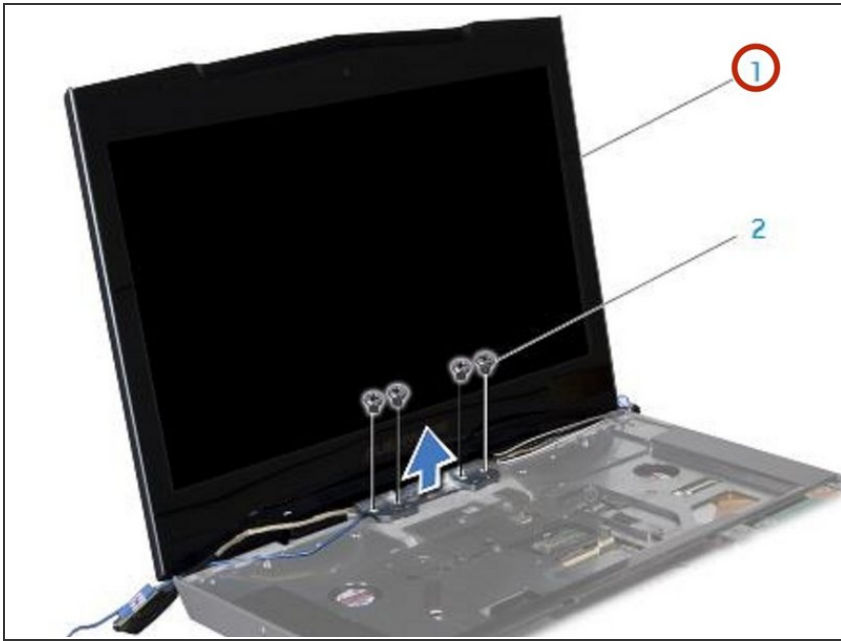
- Disconnect the display cable and the camera cable from the respective 12. system board connectors, and remove these cables from their routing guides.

Step 5 — Remove the Four Screws



- Remove the four screws (two from each hinge) that secure the display assembly to the computer base.

Step 6 — Tilting the Display Assembly



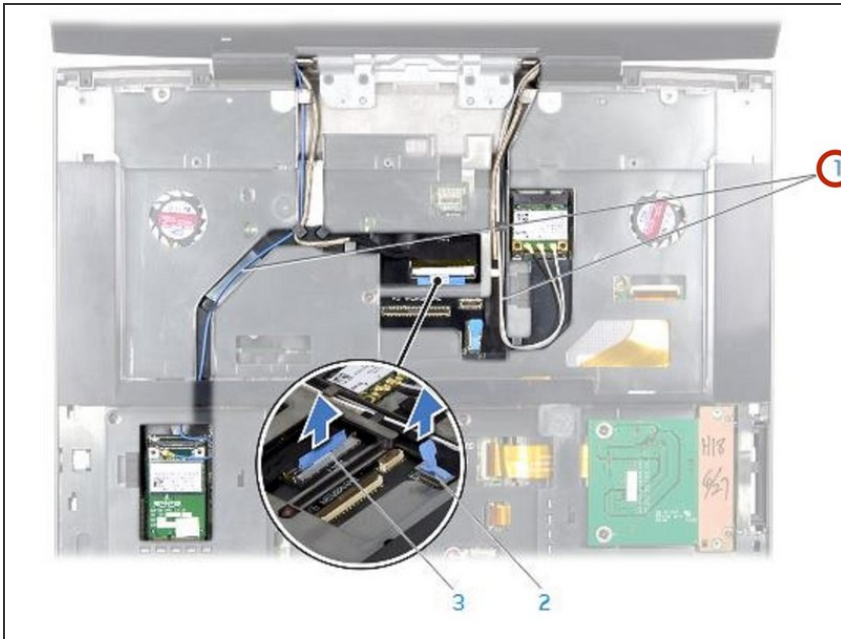
- Tilt the display assembly towards the computer base at a 45-degree angle and lift the display assembly off the computer.

Step 7 — Align the Screw Holes



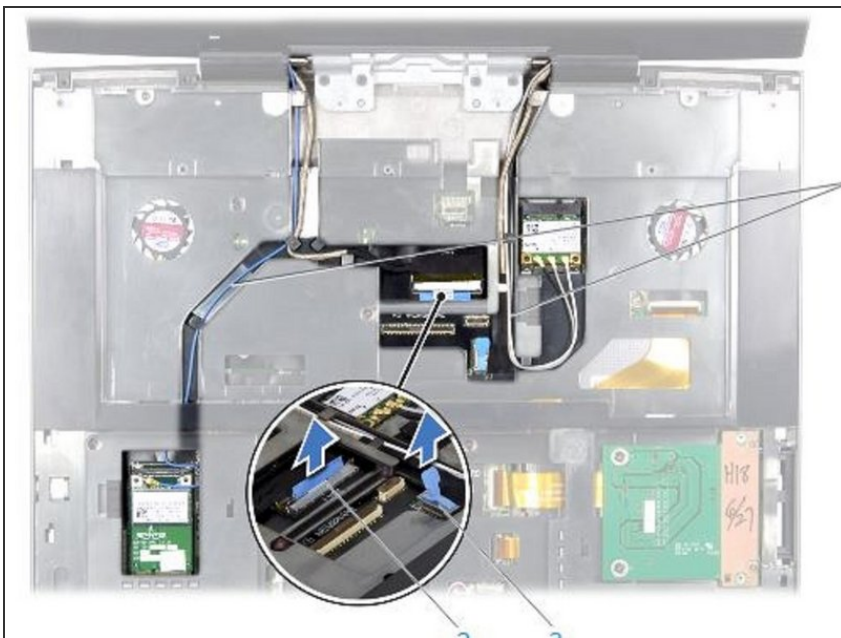
- Align the screw holes on the display hinges with the screw holes on the computer base.

Step 8 — Routing the Antenna Cables



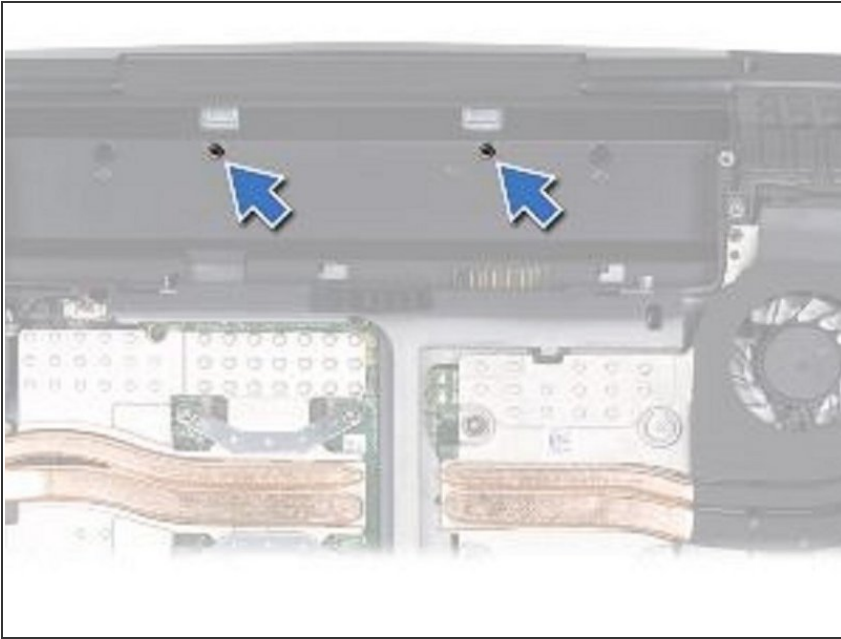
- Route the Mini-Card antenna cables through the routing guides and connect them to the respective Mini-Cards.

Step 9 — Route the Display and Camera Cables



- Route the display and camera cables through the routing guides and connect them to the system board connectors.

Step 10 — Replace the Two Screws



- Replace the two screws in the battery bay.

To reassemble your device, follow these instructions in reverse order.