



Alienware M15x GPU Replacement

This guide will help the user accomplish the replacement of the laptop's GPU.

Written By: Tomas Kronmark



INTRODUCTION

This guide will help the user accomplish the replacement of the laptop's GPU. You will need a Phillips head screwdrivers #1 and #0.



PARTS:

- [Alienware M15x \(P08G\) GTX 260M GPU](#) (1)
-

Step 1 — GPU



- Turn laptop over so that the bottom and battery are facing up.

Step 2



- Locate the battery and remove it by releasing the latch and flipping the battery out.

Step 3



- Remove the two 4mm marked screws with a small Philips head screwdriver #1. Then slide the compartment door away from the battery compartment and remove.

Step 4



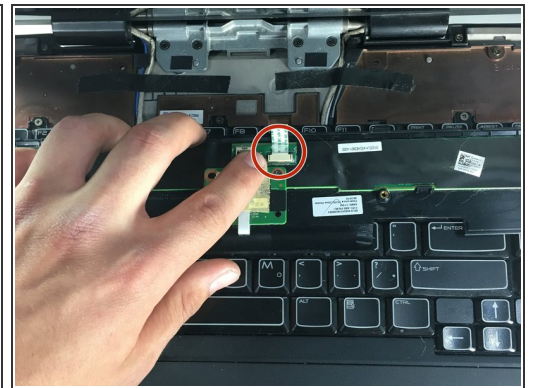
- Remove the four 4mm marked screws with a Phillips head screwdriver #1.

Step 5



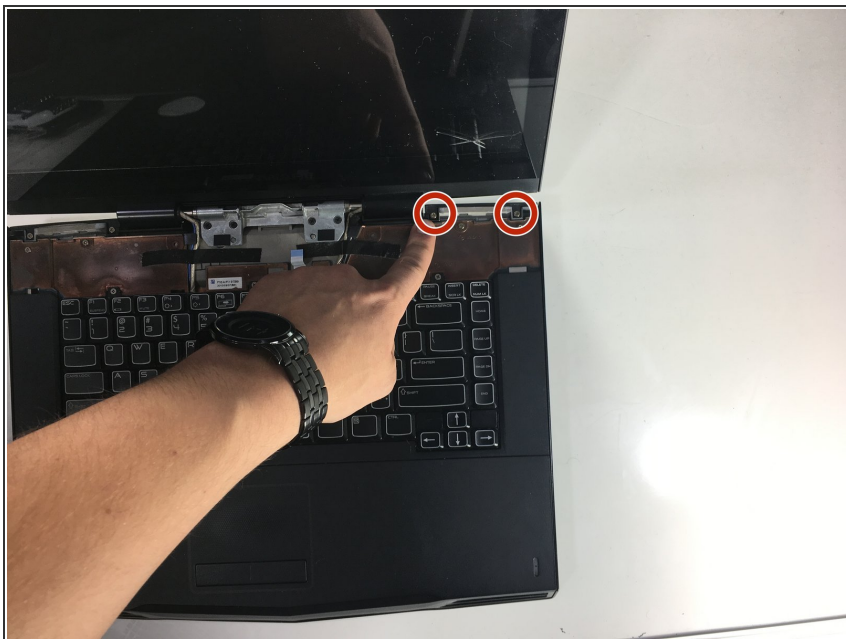
- Position laptop vertically so that the elbow is facing up and the laptop is slightly open towards the ground, creating an upside down V shape. Then, using a plastic opening tool, pry open the marked panel just slightly.

Step 6



- Position the laptop normally, with the bottom on the ground and the screen flipped up towards you. Use the same plastic opening tool to lift the power button panel. Once lifted, unclip the power button using tweezers on the two black clips. Remove the panel completely.

Step 7



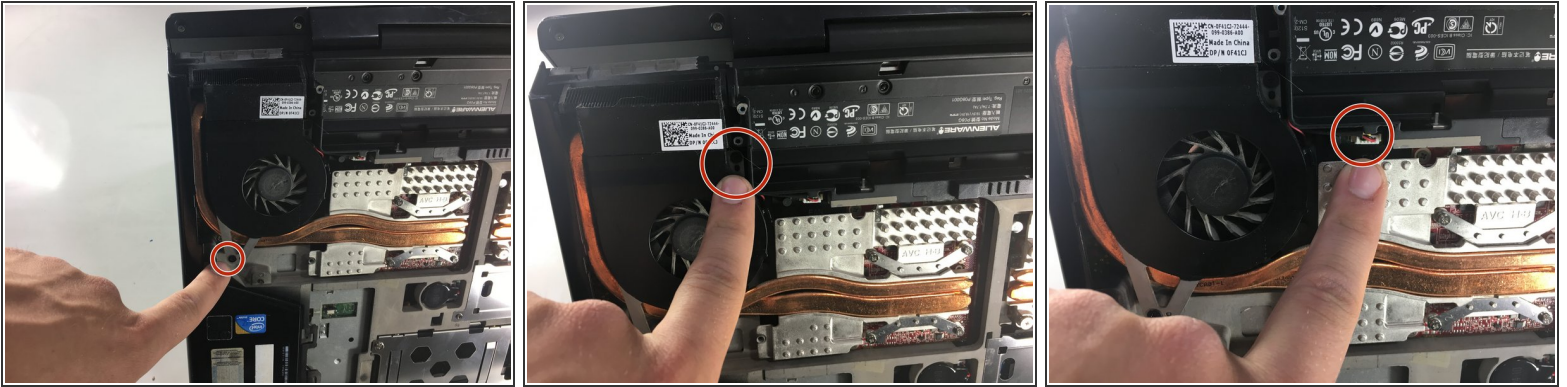
- Remove two top right 4mm screws with a Philips head screwdriver #1.

Step 8



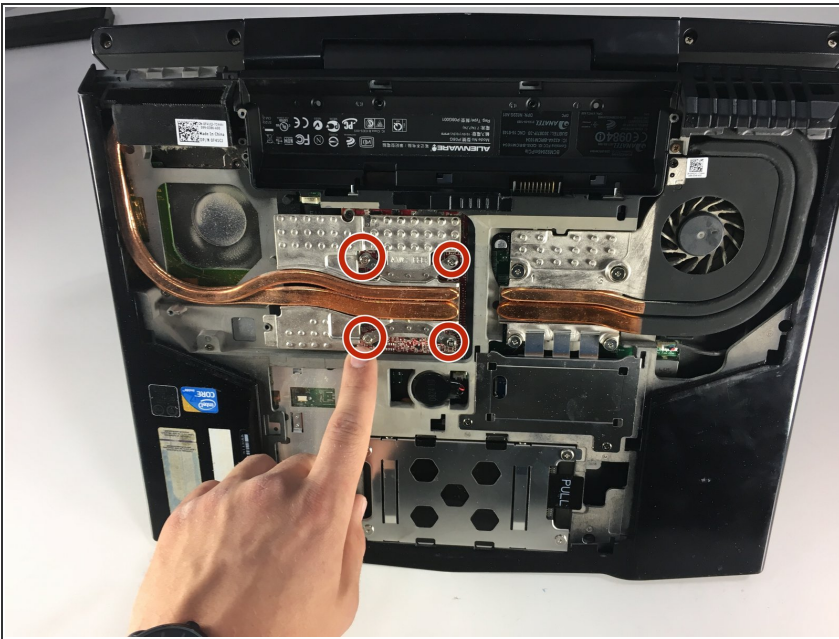
- Use a Phillips #1 screwdriver to remove the 4 mm screw from the exhaust port cover.
- Remove the exhaust port cover entirely.

Step 9



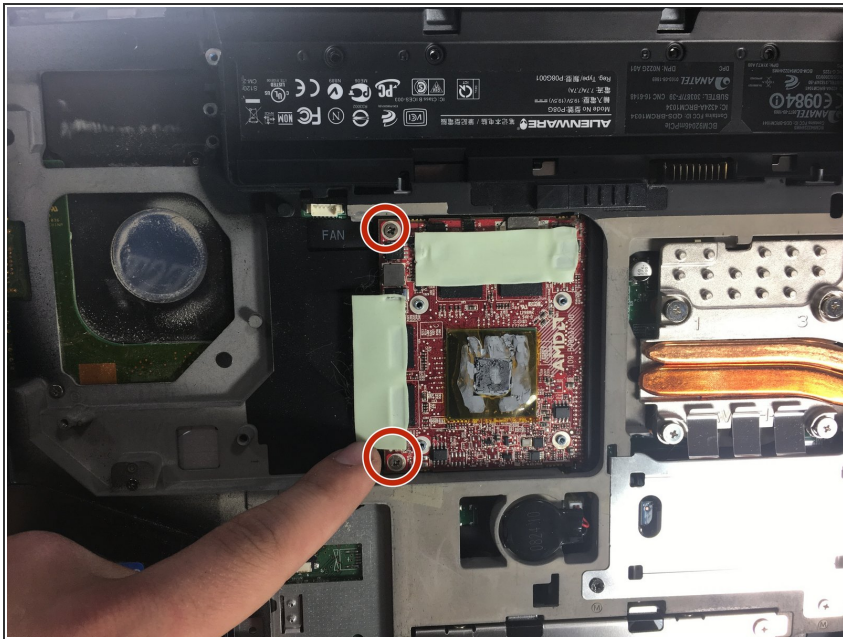
- Use a Phillips head screwdriver #0 to remove the two 3mm screws holding the fan in place, then unclip the electrical connection using tweezers.

Step 10



- Remove the heat sink by loosening the 4 marked screws with a Phillips head screwdriver #0.

Step 11



- This is the GPU. It can be removed or replaced by using a Phillips head screwdriver #1 or #0 to remove the two screws. Remember that when replacing the GPU, it is important to reapply thermal paste in a small line almost the length of the chip.

To reassemble your device, follow these instructions in reverse order.