



# Alienware M15x Processor Fan and Heat Sink Assembly Replacement

Written By: Terrence15



---

## INTRODUCTION

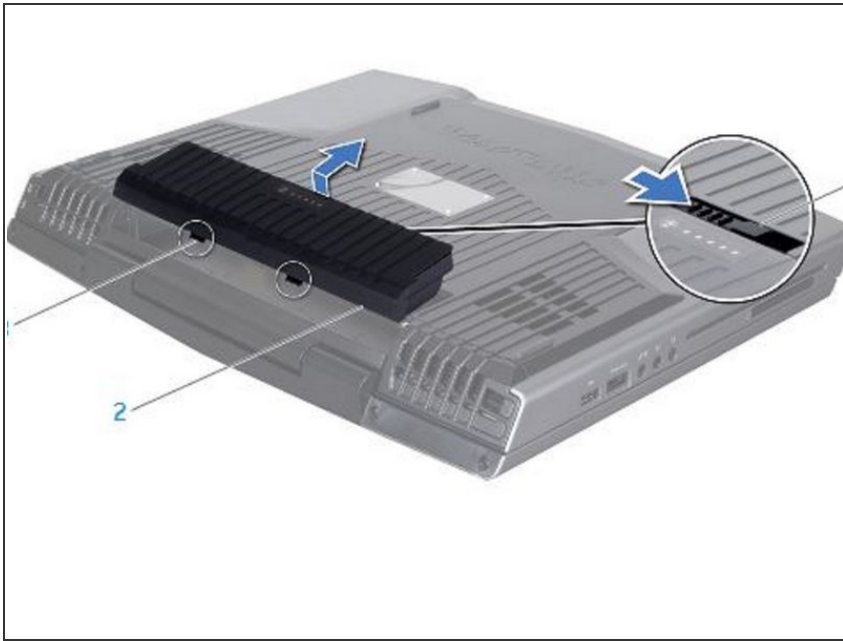
In this guide, we will show you how to remove and replace the Processor Fan and Heat-Sink Assembly.


---

### TOOLS:

- [Essential Electronics Toolkit](#) (1)
-

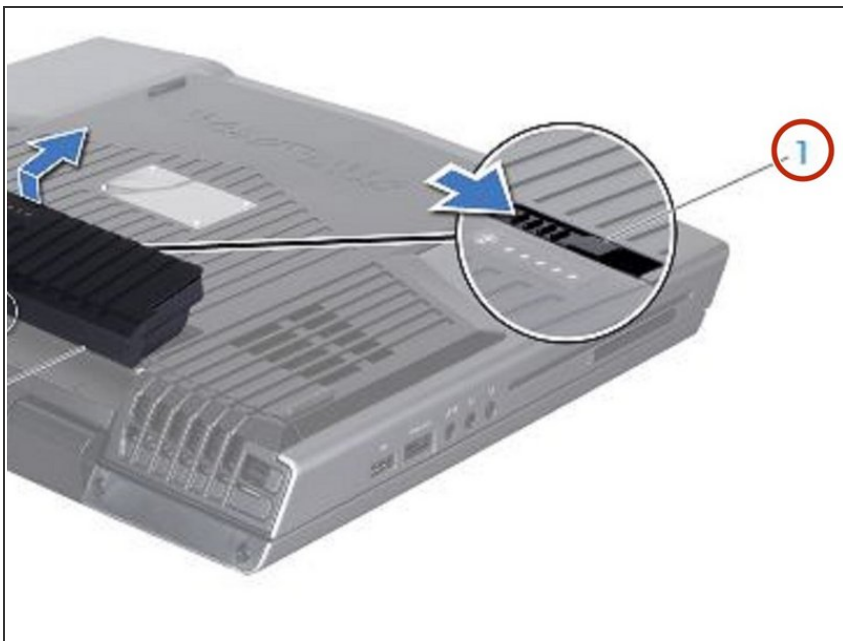
## Step 1 — Turn the Computer



 **WARNING:** Before working inside your computer, read the safety information that shipped with your computer.

- Turn the computer over.

## Step 2 — Sliding the Battery



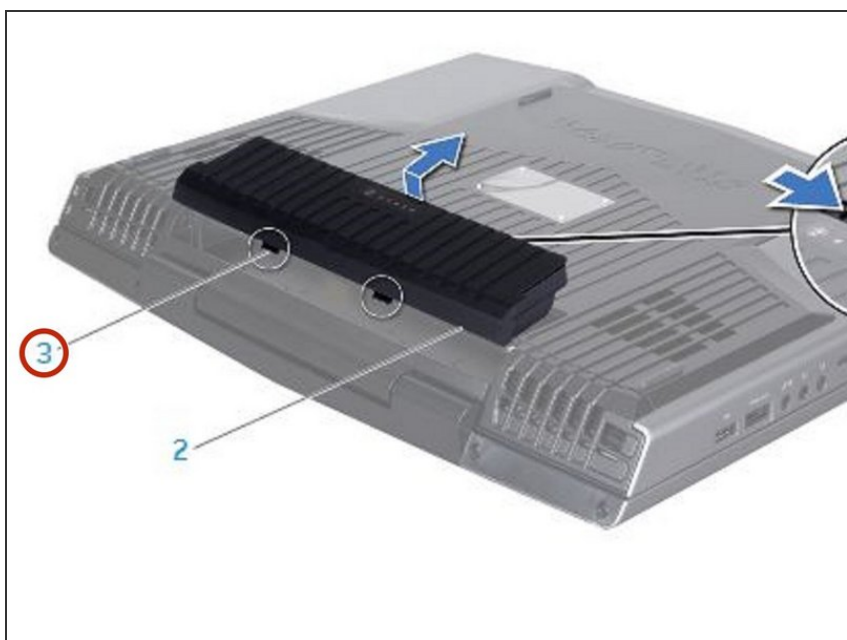
- Slide the battery latch to the unlock position as shown.

### Step 3 — Removing the Battery Pack



- After the Battery Pack pops up, remove the Battery Pack.

### Step 4 — Aligning the Battery Pack Tabs



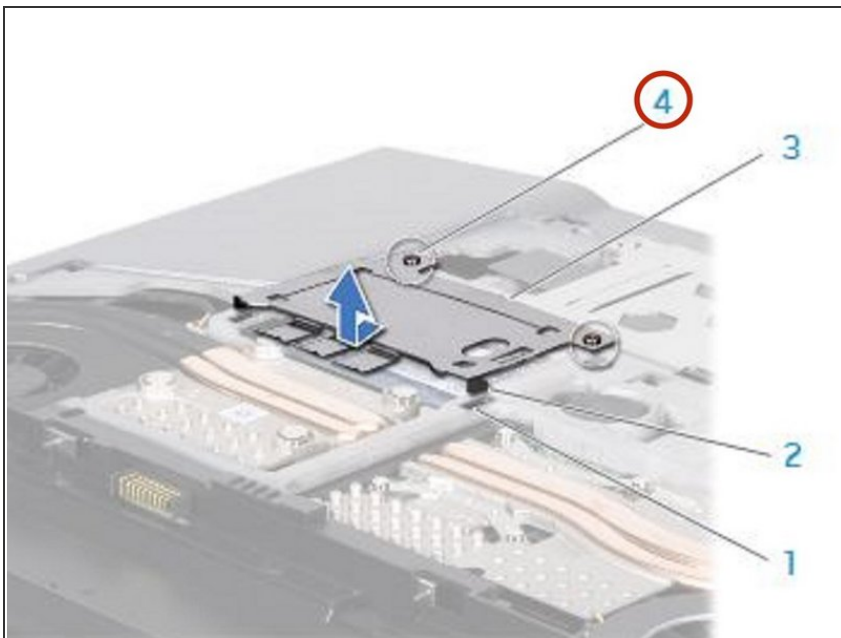
- Align the battery pack tabs with the slots in the battery bay.



## Step 5 — Pushing the Battery Pack



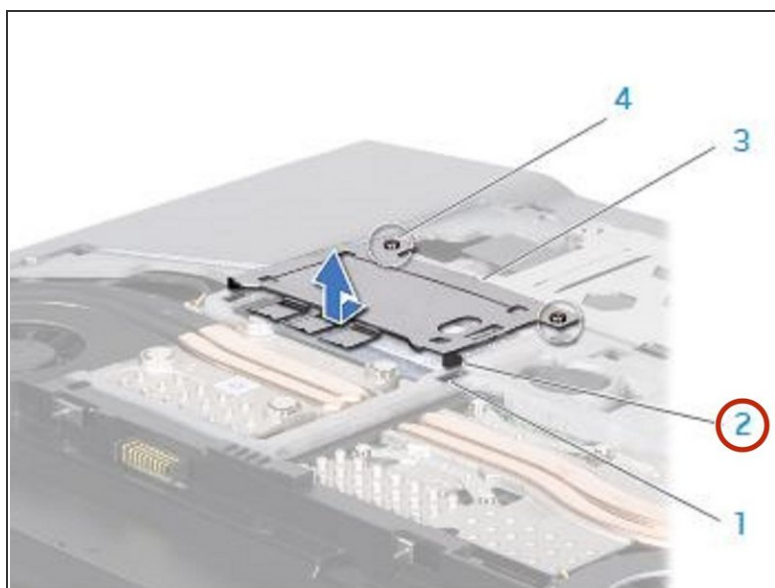
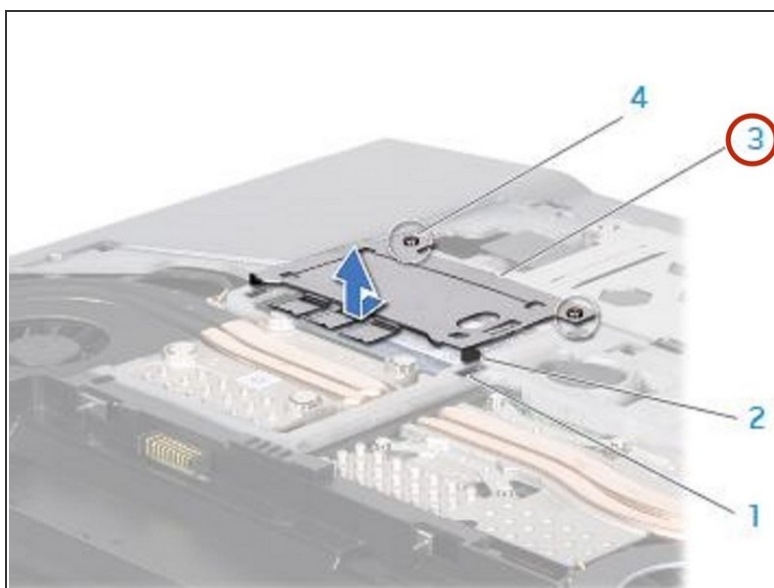
- Push the **NEW** battery pack into the battery bay until the battery pack clicks into place.

## Step 6 — Loosen the Screws



-  **WARNING:** Before working inside your computer, read the safety information that shipped with your computer.
-  **CAUTION:** To avoid electrostatic discharge, ground yourself by using a wrist grounding strap or by periodically touching an unpainted metal surface (such as a connector on the back of the computer).
- Loosen the two captive screws that secure the memory-module door to the computer base.

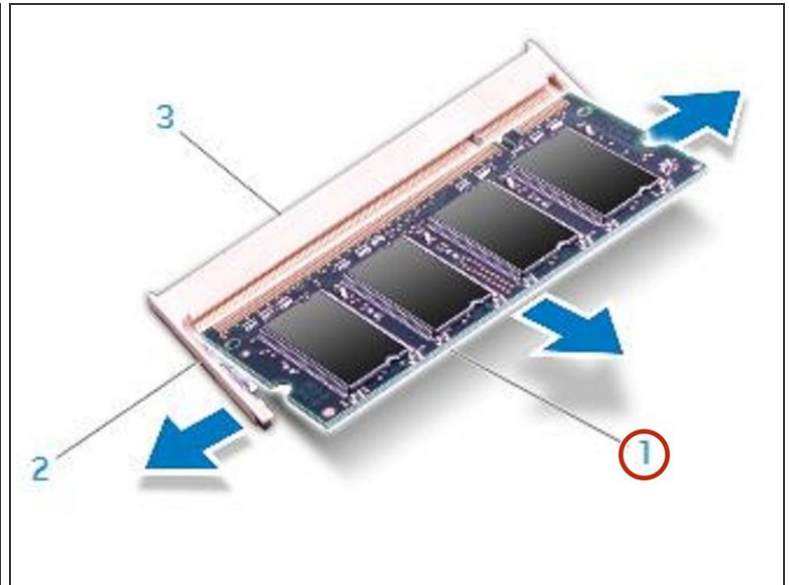
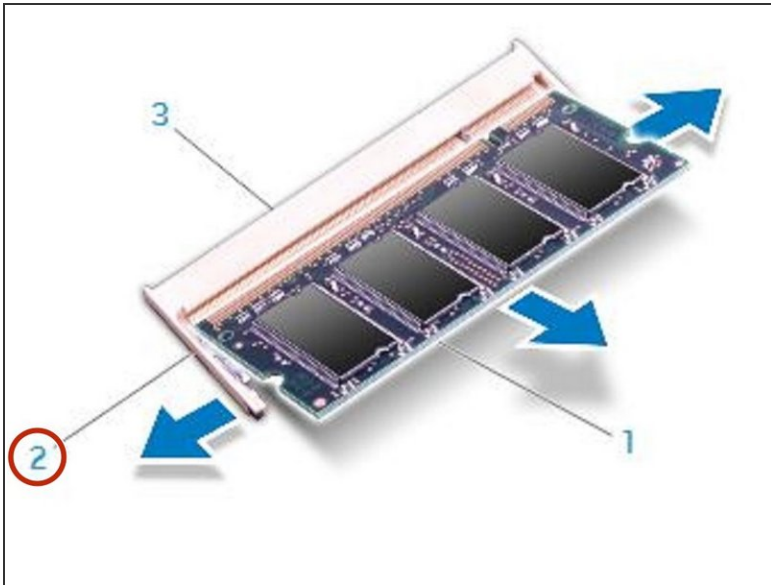
## Step 7 — Lifting the Memory Module Door



- Slide the memory-module door to release the tabs and lift the memory-module door out of the computer base.

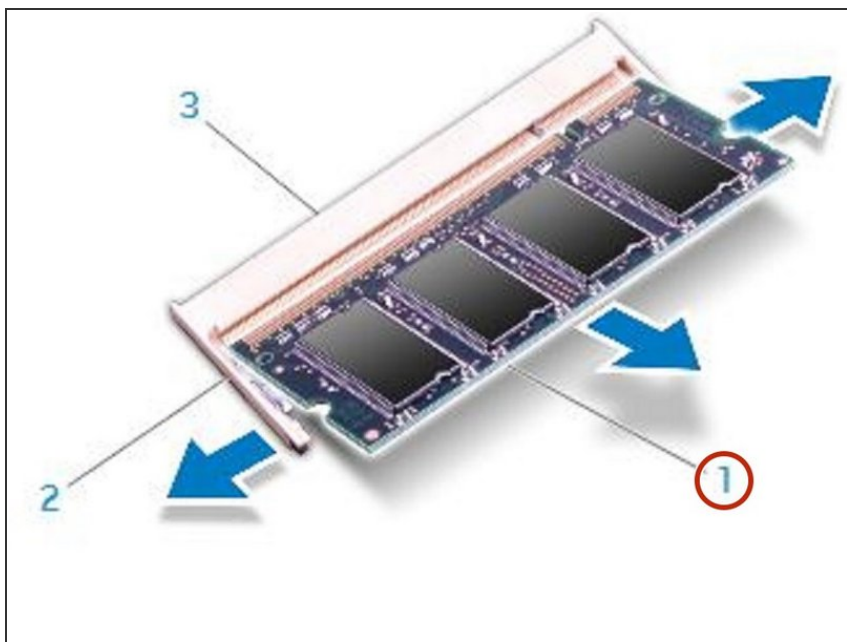


## Step 8 — Popping up the Memory Module



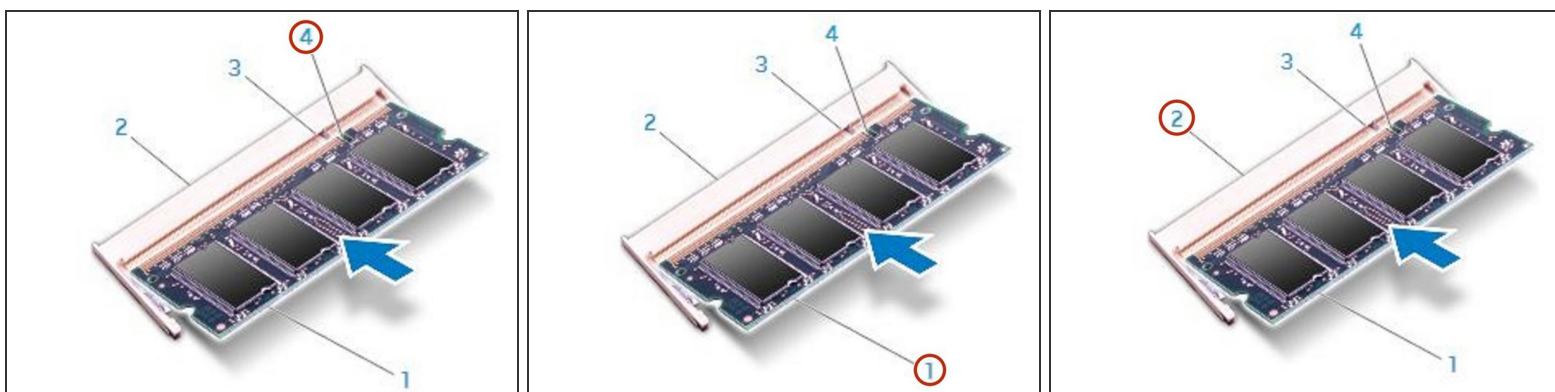
- ⚠ CAUTION:** If you need to remove memory modules from both connectors, remove the memory module in the upper connector before you remove the module in the lower connector.
- ⚠ CAUTION:** To prevent damage to the memory module connector(s), do not use tools to spread the memory module spring-locks.
- Use your fingertips to carefully spread apart the spring-locks on the memory-module connector until the memory module pops up.

## Step 9 — Remove the Memory Module



- Remove the memory module.

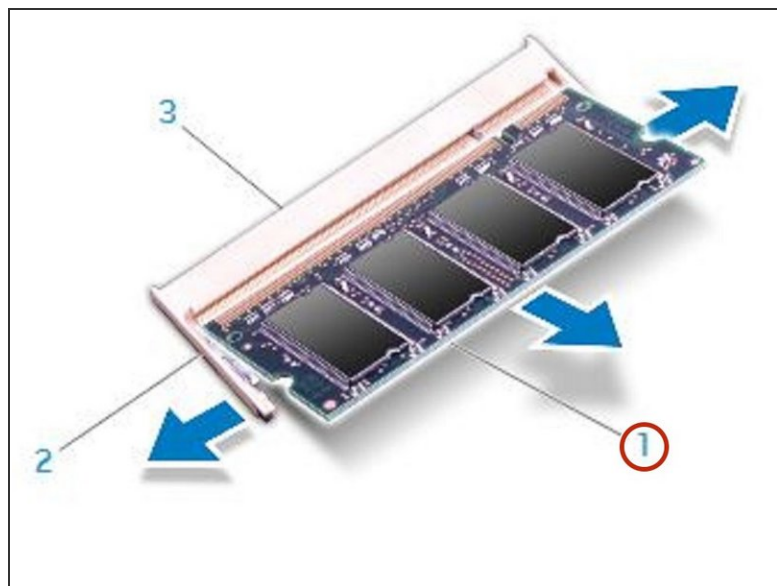
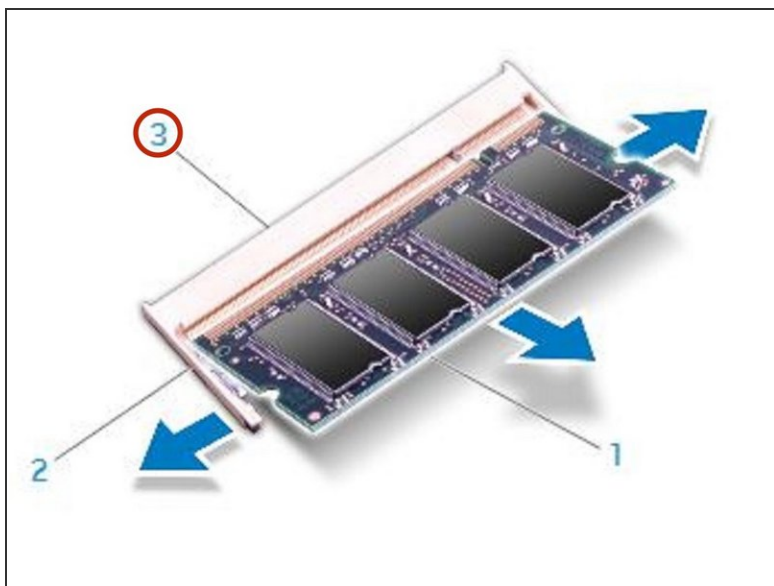
## Step 10 — Align the Notch



- Align the notch on the **NEW** memory module with the tab on the memory-module connector.

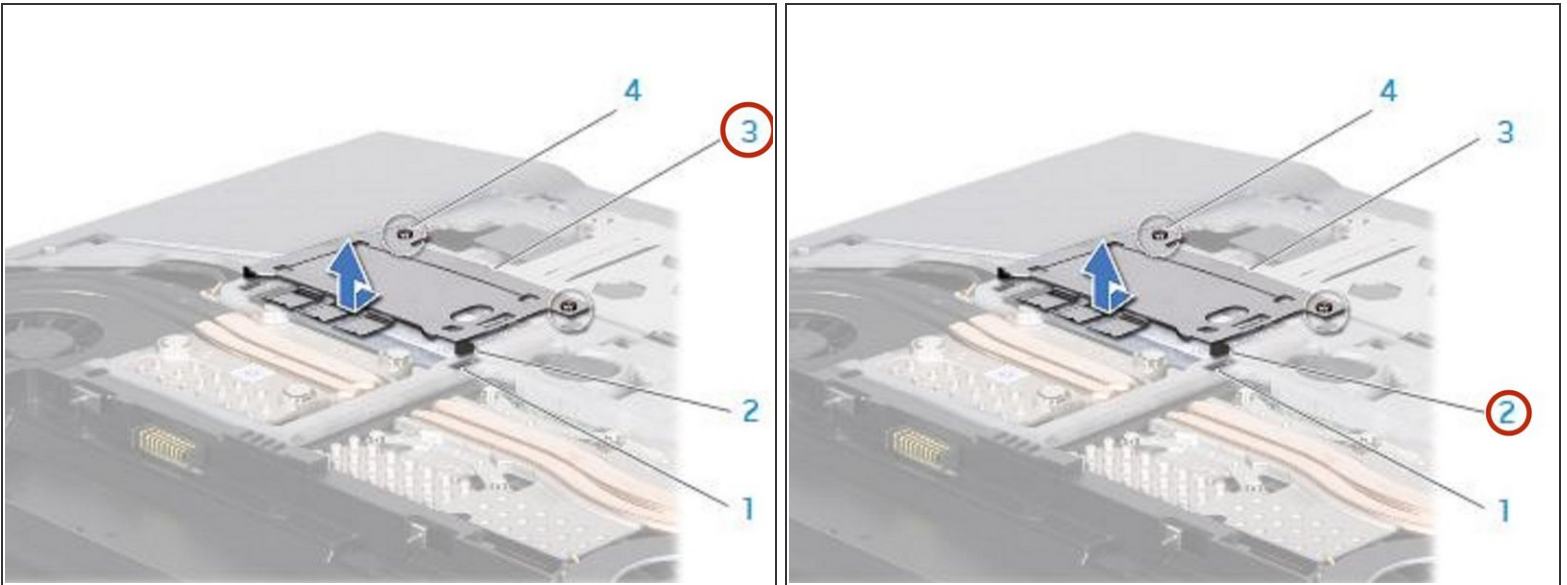


## Step 11 — Insert the Module



- Insert the module into the memory-module connector at a 45-degree angle, and press the memory module down until it clicks into place. If you do not hear the click, remove the module and reinstall it.

## Step 12 — Align and Insert the Memory Module Tabs

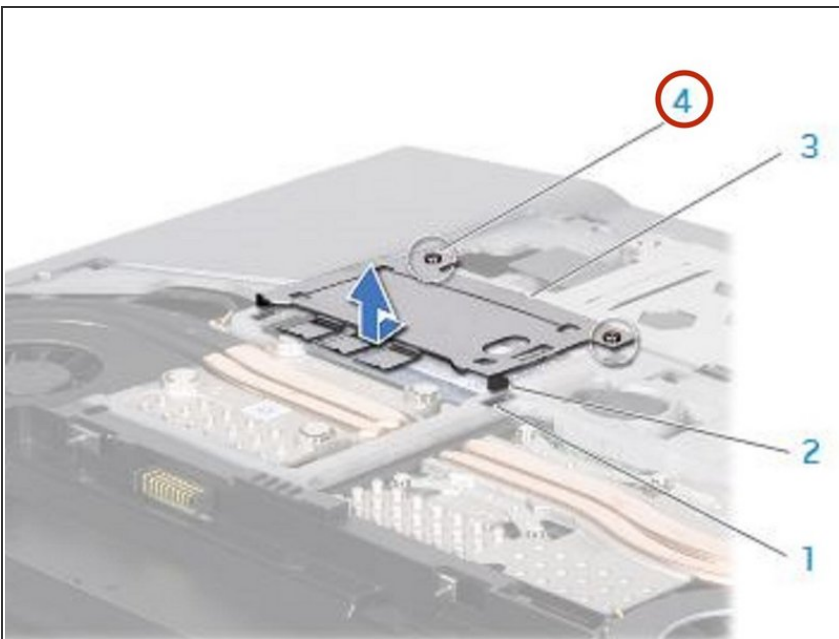


**CAUTION:** If the memory-module door is difficult to close, remove the memory module and reinstall it. Forcing the memory-module door to close may damage your computer.

**NOTE:** If the memory module is not installed properly, the computer may not boot.

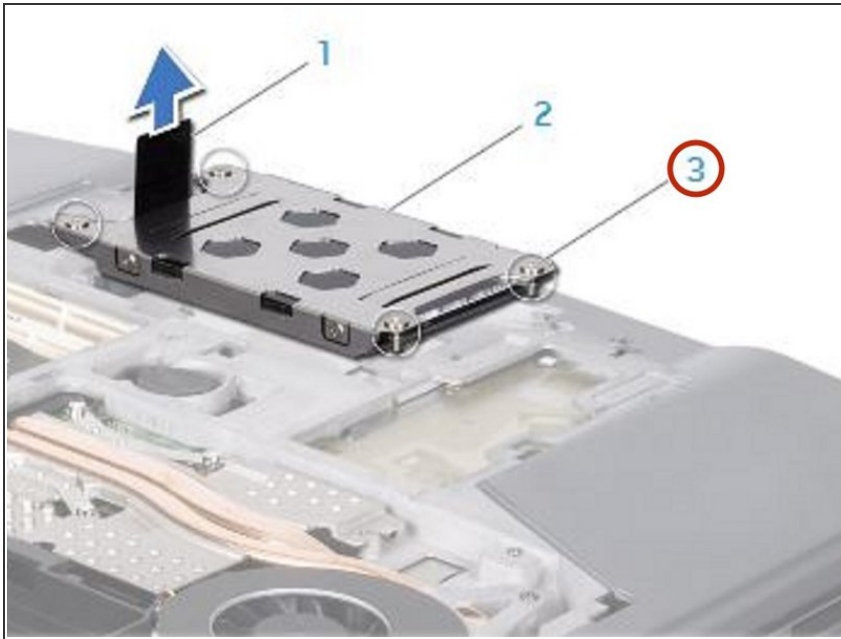
- Align and insert the memory-module door tabs into the slots on the computer base.

## Step 13 — Replacing and Tightening the Screws



- Replace and tighten the two captive screws that secure the memory-module door to the computer base.

## Step 14 — Loosen the Screws

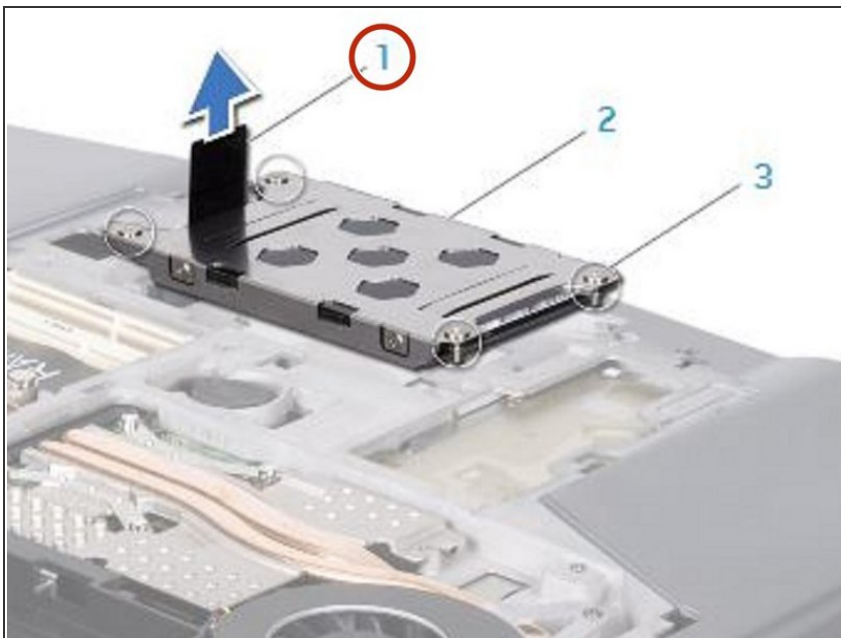


**⚠ WARNING:** Before working inside your computer, read the safety information that shipped with your computer.

**⚠ WARNING:** If you remove the hard drive from the computer when the drive is hot, do not touch the metal housing of the hard drive.

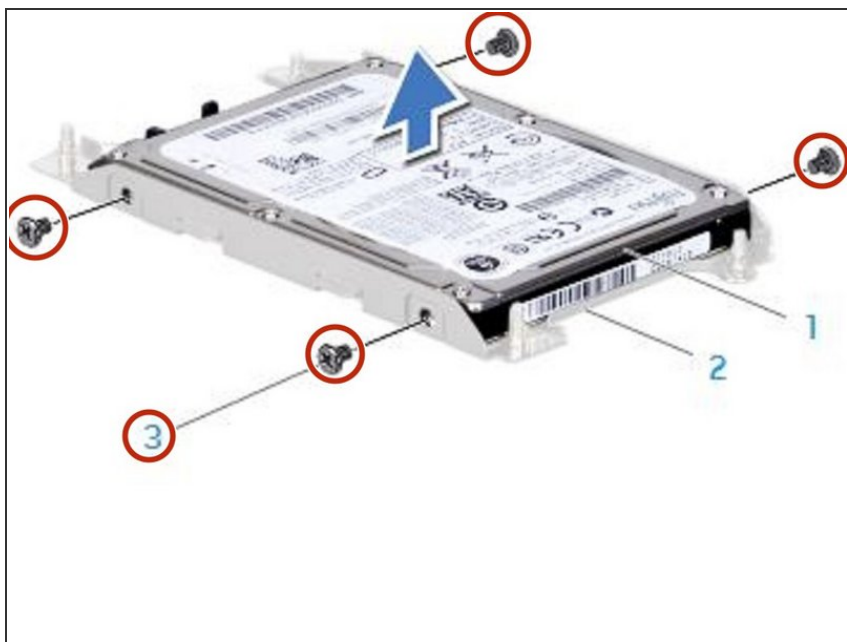
- Loosen the four captive screws that secure the hard-drive assembly.

## Step 15 — Lifting the Hard-Drive Assembly



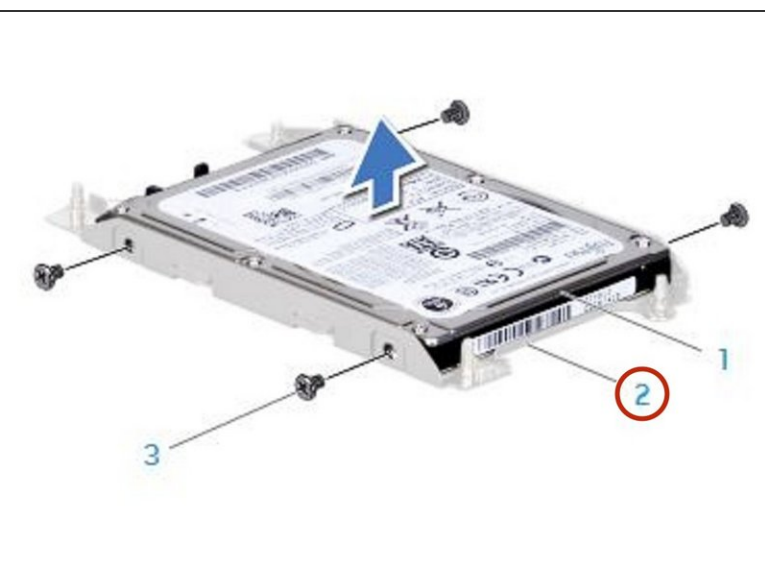
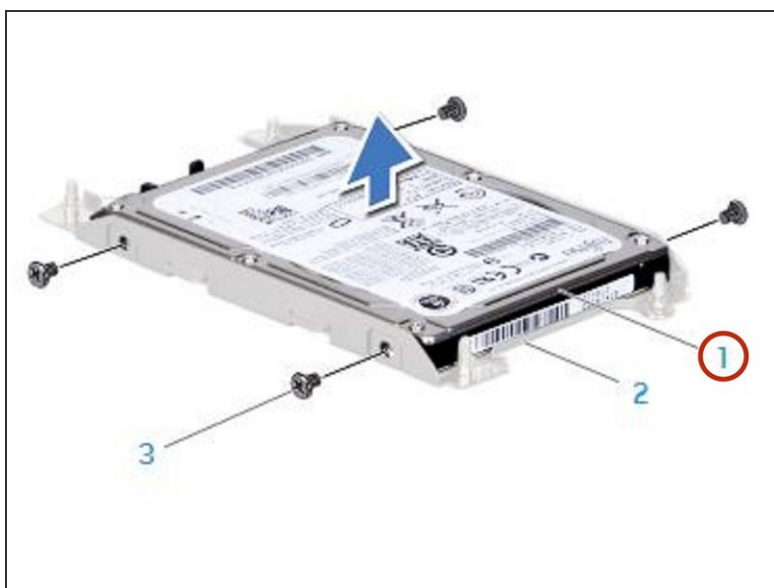
- Using the pull-tab, lift the hard-drive assembly out of the hard-drive bay.

## Step 16 — Remove the Screws



- Remove the four screws that secure the hard drive to the hard-drive bracket.

## Step 17 — Lifting the Hard Drive



- Lift the hard drive out of the hard-drive bracket.



## Step 18 — Disconnect the Interposer



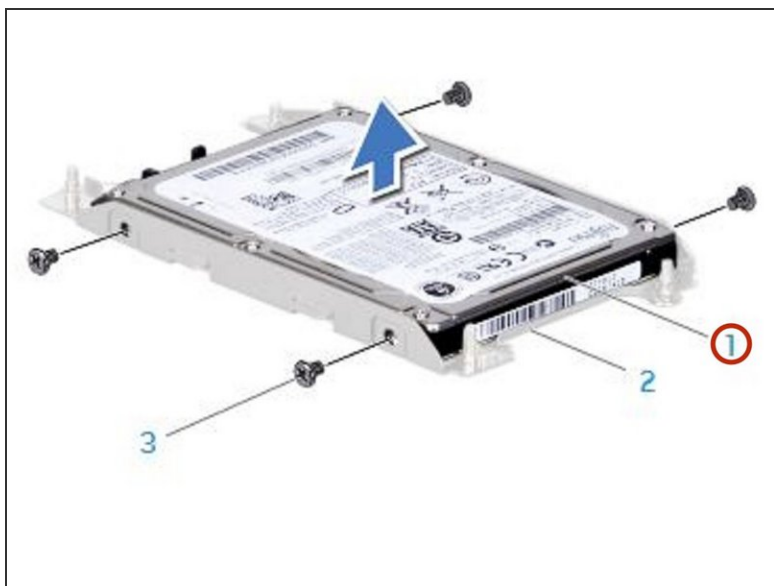
- Disconnect the interposer from the hard drive.

## Step 19 — Connecting the Interposer



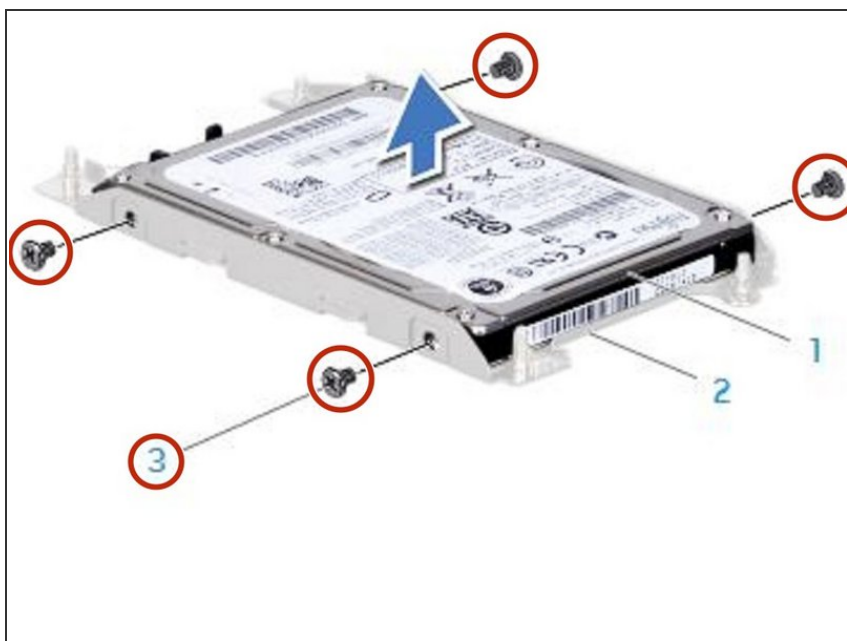
- Connect the interposer to the **NEW** hard drive.

## Step 20 — Placing the Hard-Drive in the Bracket



- Place the hard drive in the hard-drive bracket.

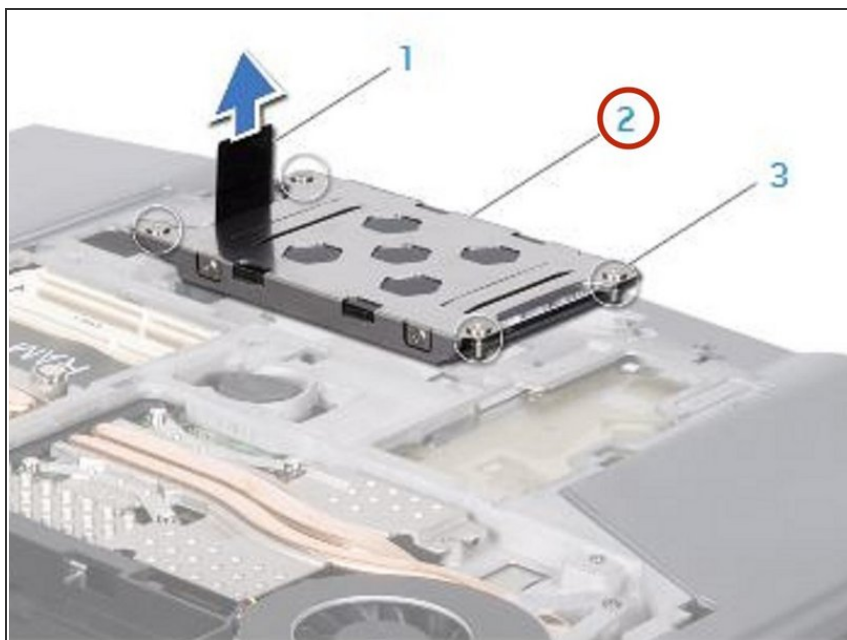
## Step 21 — Replace the Four Screws



- Replace the four screws that secure the hard drive to the hard-drive bracket.

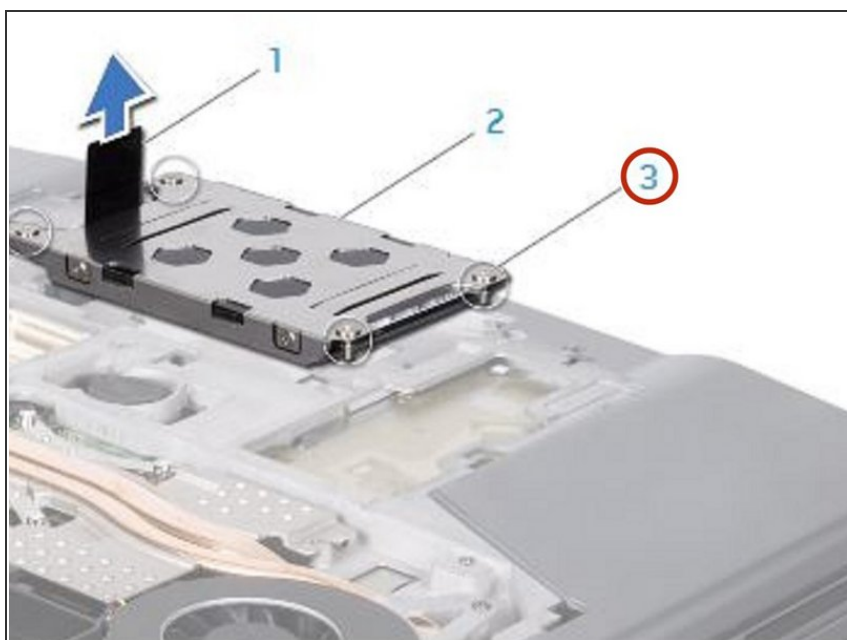


## Step 22 — Placing the Hard-Drive Assembly



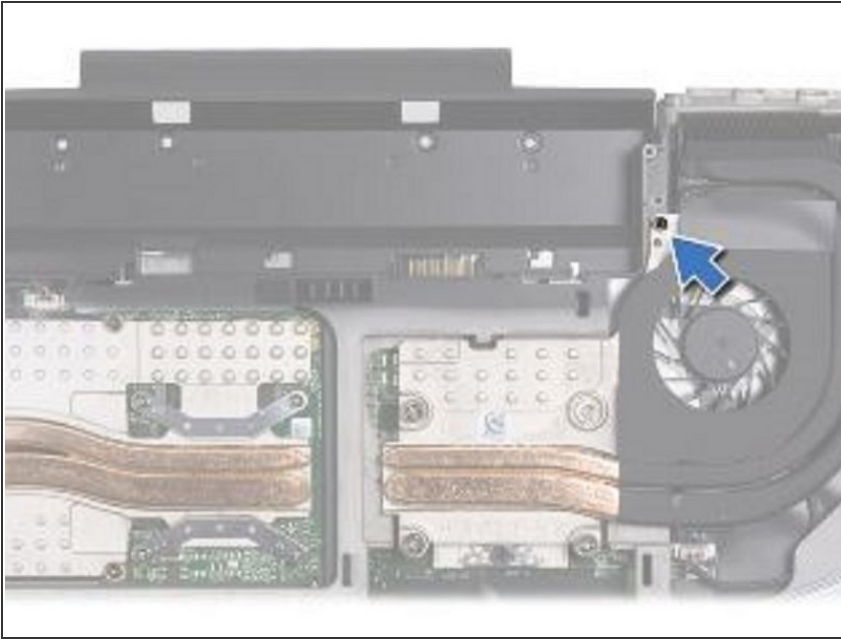
- Place the hard-drive assembly in the hard-drive bay.

## Step 23 — Aligning and Tightening the Screws



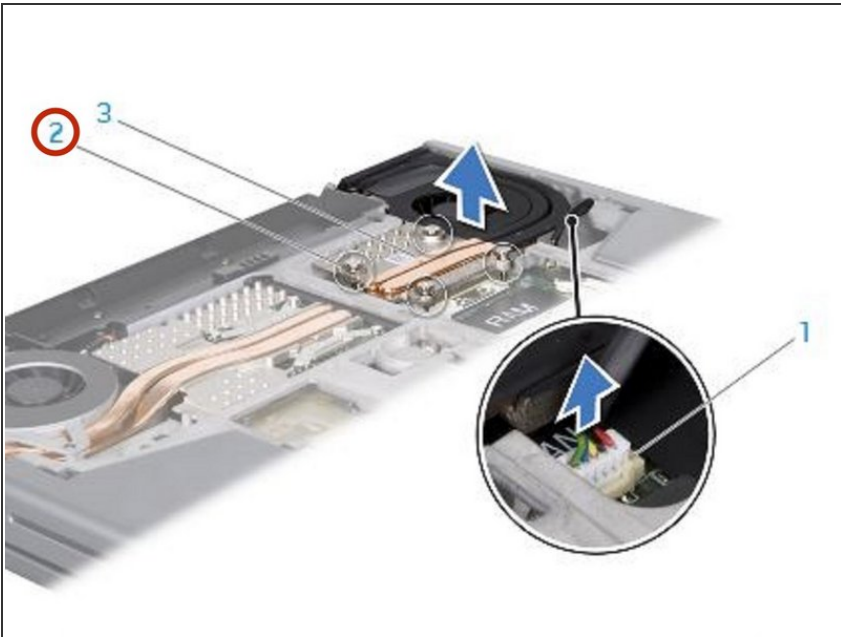
- Align and tighten the four captive screws that secure the hard-drive assembly to the hard-drive bay.

## Step 24 — Disconnecting the Fan and Heat Sink Assembly



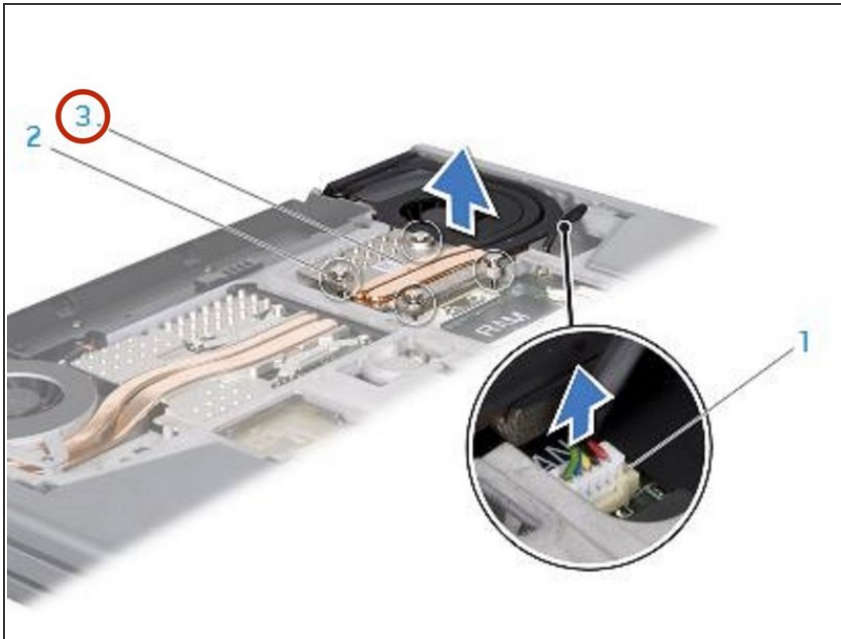
- ⚠ WARNING:** Before working inside your computer, read the safety information that shipped with your computer.
- ⚠ CAUTION:** To avoid electrostatic discharge, ground yourself by using a wrist grounding strap or by periodically touching an unpainted metal surface (such as a connector on the back of the computer).
- Disconnect the processor fan and heat sink assembly cable from the system board connector.

## Step 25 — Loosen the Screws



- In sequential order (indicated on the processor fan and heat sink assembly), loosen the four captive screws that secure the processor fan and heat sink assembly to the system board.

## Step 26 — Lifting the Processor Fan and Heat-Sink Assembly



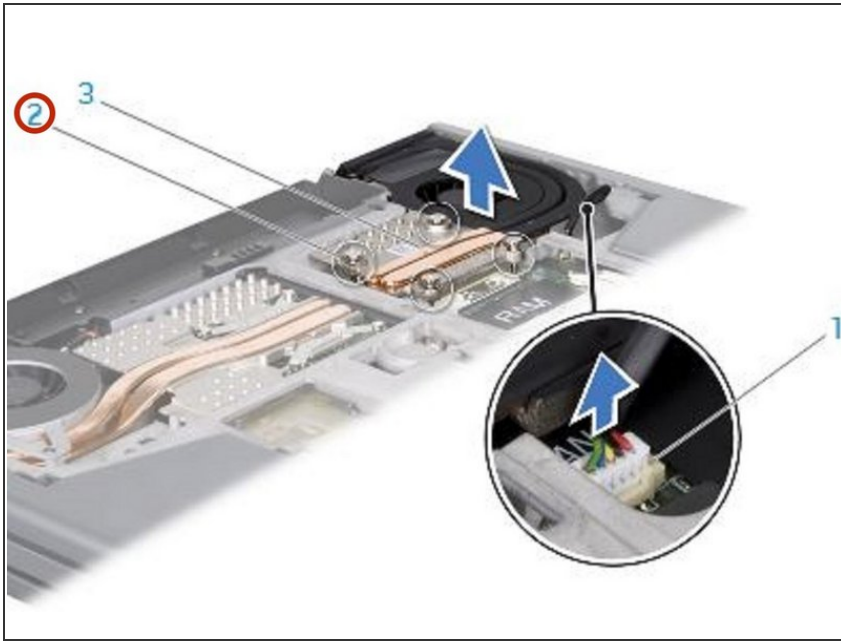
- Lift the processor fan and heat sink assembly off the system board.

## Step 27 — Peeling off the Backing



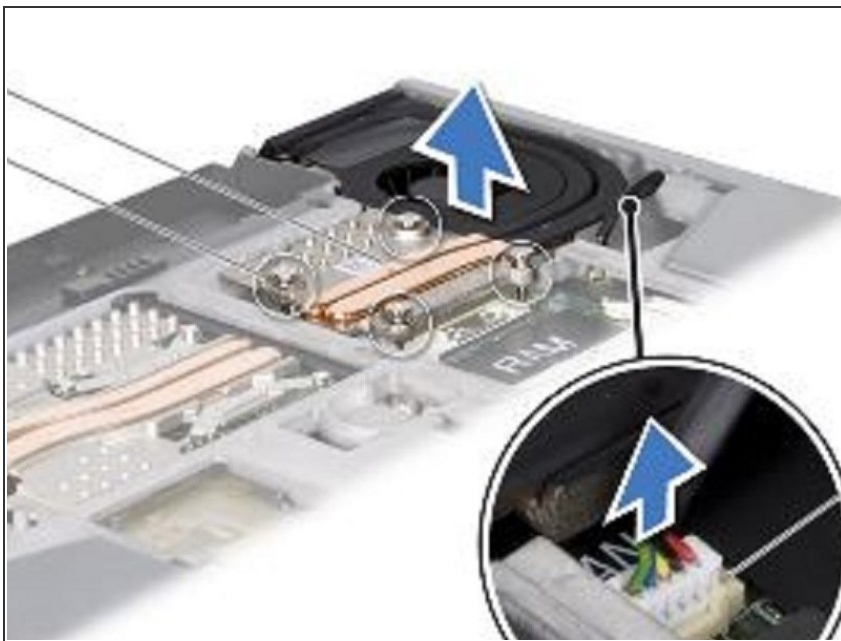
- Peel the backing off the thermal cooling pads attached to the **NEW** processor fan and heat sink assembly.
- ⓘ NOTE: If the processor fan and heat sink assembly is replaced, the thermal cooling pads will be attached to the new processor fan and heat sink assembly. Do not reuse the old thermal cooling pads.

## Step 28 — Align the Four Captive Screws



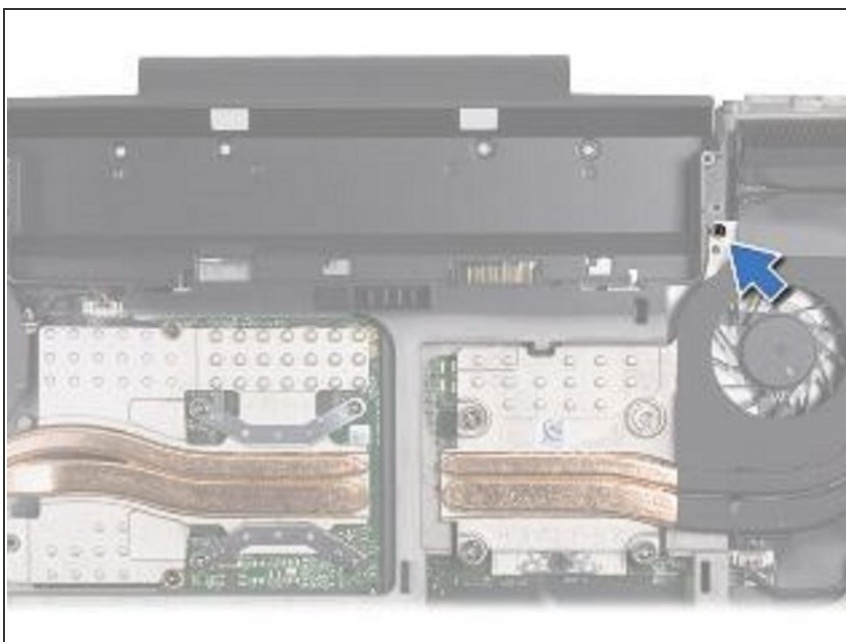
- Align the four captive screws on the processor heat sink with the screw holes on the system board and tighten the screws in sequential order (indicated on the processor fan and heat sink assembly).

## Step 29 — Tighten the Screw



- Tighten the screw that secures the processor fan and heat sink assembly to the computer base.

## Step 30 — Connect the Processor Fan and Heat Sink Assembly



- Connect the processor fan and heat sink assembly cable to the system board connector.

To reassemble your device, follow these instructions in reverse order.