



Alienware M17x Motherboard Replacement

Replace the motherboard of your Alienware M17x to bring power back to your laptop or to regain use of broken components, such as USB ports.

Written By: Mosier Locke



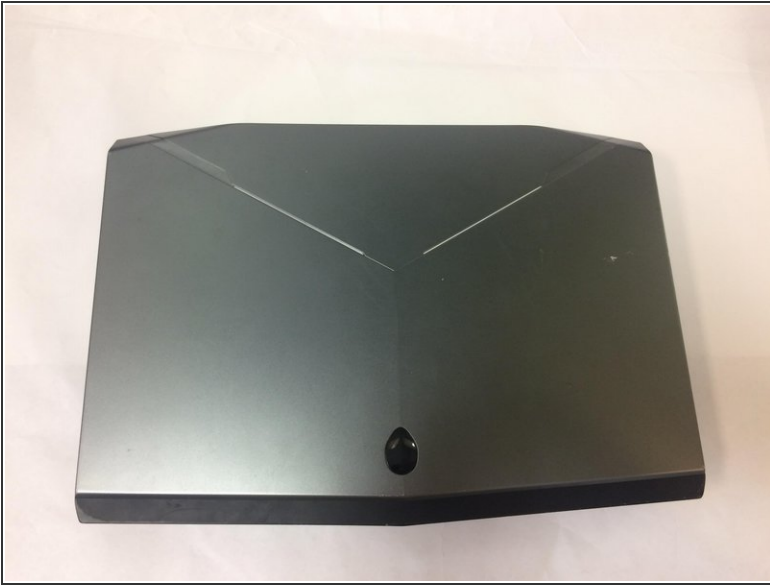
INTRODUCTION

If your laptop is incapable of performing routine tasks or recognizing when USB devices are plugged in, use this guide to remove and replace your motherboard.

TOOLS:

- [Phillips #0 Screwdriver](#) (1)
 - [iFixit Opening Tools](#) (1)
 - [Magnetic Project Mat](#) (1)
 - [Spudger](#) (1)
-

Step 1 — Battery



⚠ Turn off your laptop before starting.

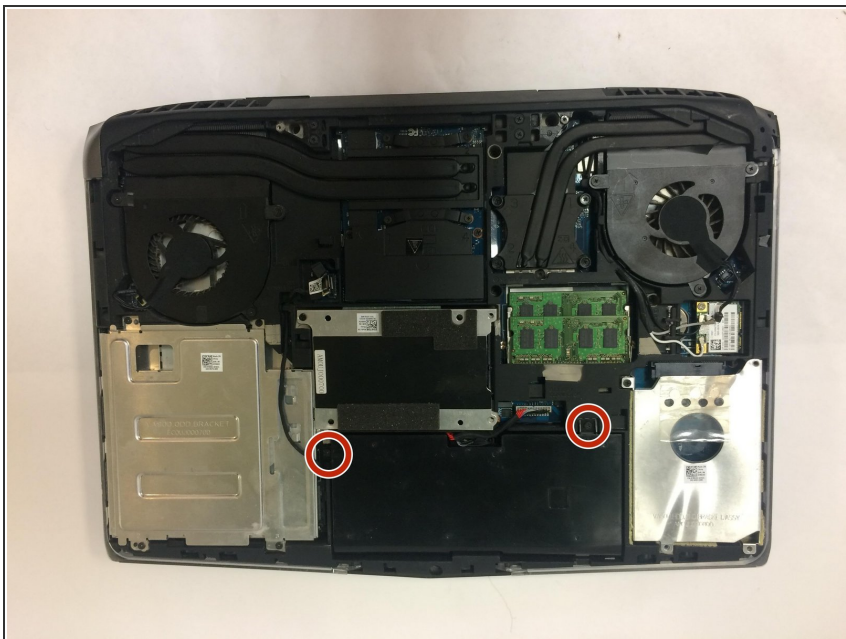
- Flip the laptop over so the model stickers face the ceiling.

Step 2



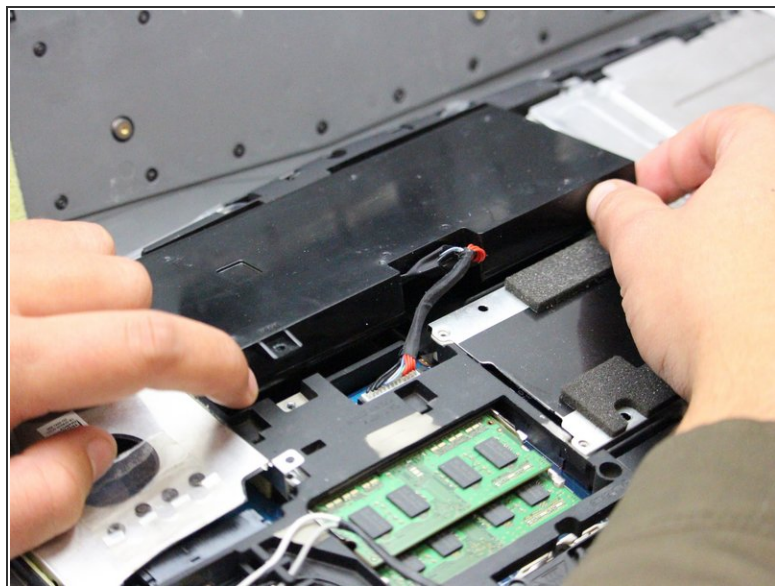
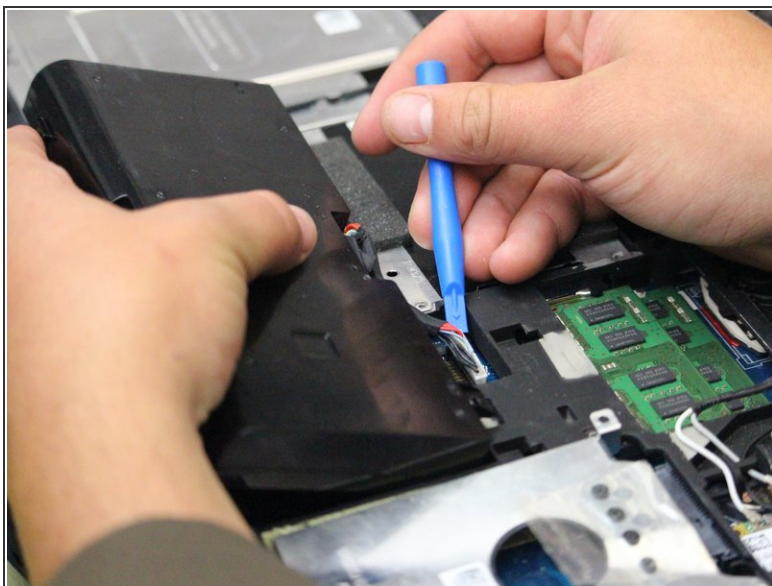
- Remove the two 3.5 mm Phillips #0 screws holding the cover in place.
- Slide cover forward then carefully lift up.

Step 3



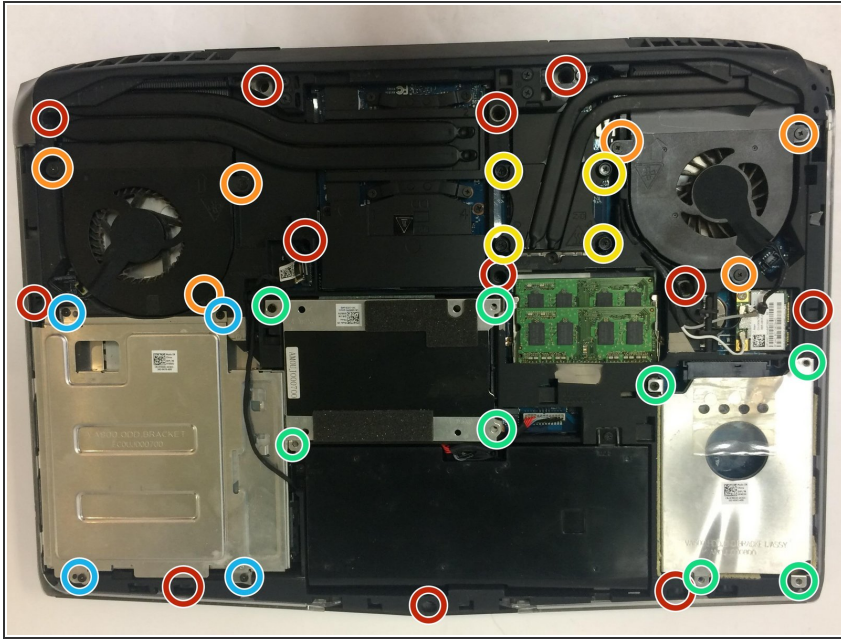
- Remove the two 5.5 mm Phillips #0 screws holding the battery in place.

Step 4



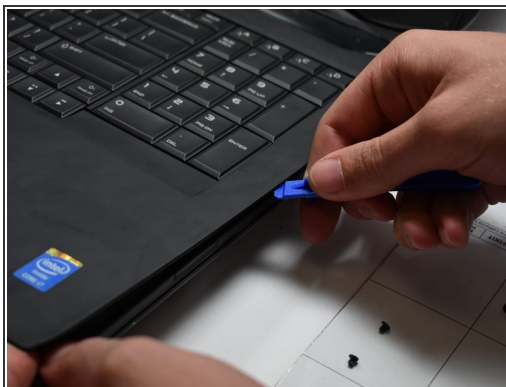
- Carefully use the Plastic Opening Tool to unplug the battery.
- Lift the battery up and out to remove.

Step 5 — Motherboard



- Remove the following screws using a Phillips #0 screwdriver to free the motherboard from the rest of the internal components.
- ⓘ A Magnetic Project Mat is recommended to keep track of screws and removed parts.
- Twelve 5.5 mm Phillips #0 main frame screws.
- Six 3.5 mm Phillips #0 fan screws.
- Four 3.5 mm Phillips #0 internal compartment screws.
- Eight 3.5 mm Phillips #0 Hard Drive screws.
- Four 3.5 mm Phillips #0 CD Drive screws.
- ⓘ After removing the screws NOT marked in red, each corresponding component can be removed, but it is not recommended for this guide.

Step 6



- Flip the laptop over so that the Alienware logo is facing the ceiling and open the lid exposing the screen and keyboard.
- Use a plastic opening tool to pry the keyboard from the base of the computer.

Step 7



- Remove five 3.5 mm Phillips #0 screws from the motherboard.
- Unplug the consumer IR cables on the consumer IR board using a plastic opening tool.
- Lift the motherboard at an angle and remove it from the computer base.

To reassemble your device, follow these instructions in reverse order.