



Alienware M17x P01E Compartment Door Replacement

Use this guide to replace the compartment door of your Alienware M17x P01E.

Written By: Kevin Palacios



INTRODUCTION

This guide will help with the compartment door replacement for the Alienware M17x P01E.




TOOLS:

- [Phillips #1 Screwdriver](#) (1)
-

Step 1 — Battery



 Please power off the computer and deplete the battery before attempting the following step.

Step 2



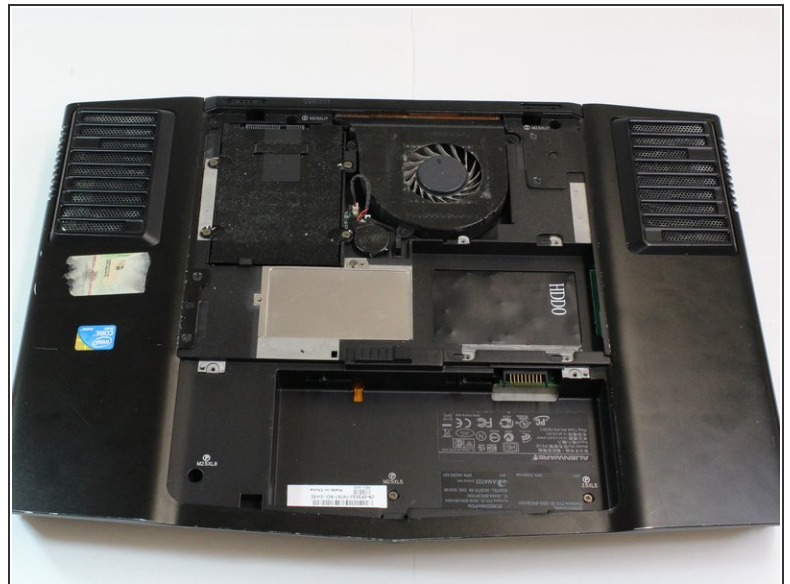
- Press down on the battery latch and slide it to the left.
- Lift the battery out once it pops out.

Step 3 — Compartment Door



- Loosen the two silver Phillips #1 screws.
- ⓘ The screws are held to the compartment door by a washer and cannot be removed.

Step 4



- Use your hand to gently lift and remove the compartment door.

To reassemble your device, follow these instructions in reverse order.