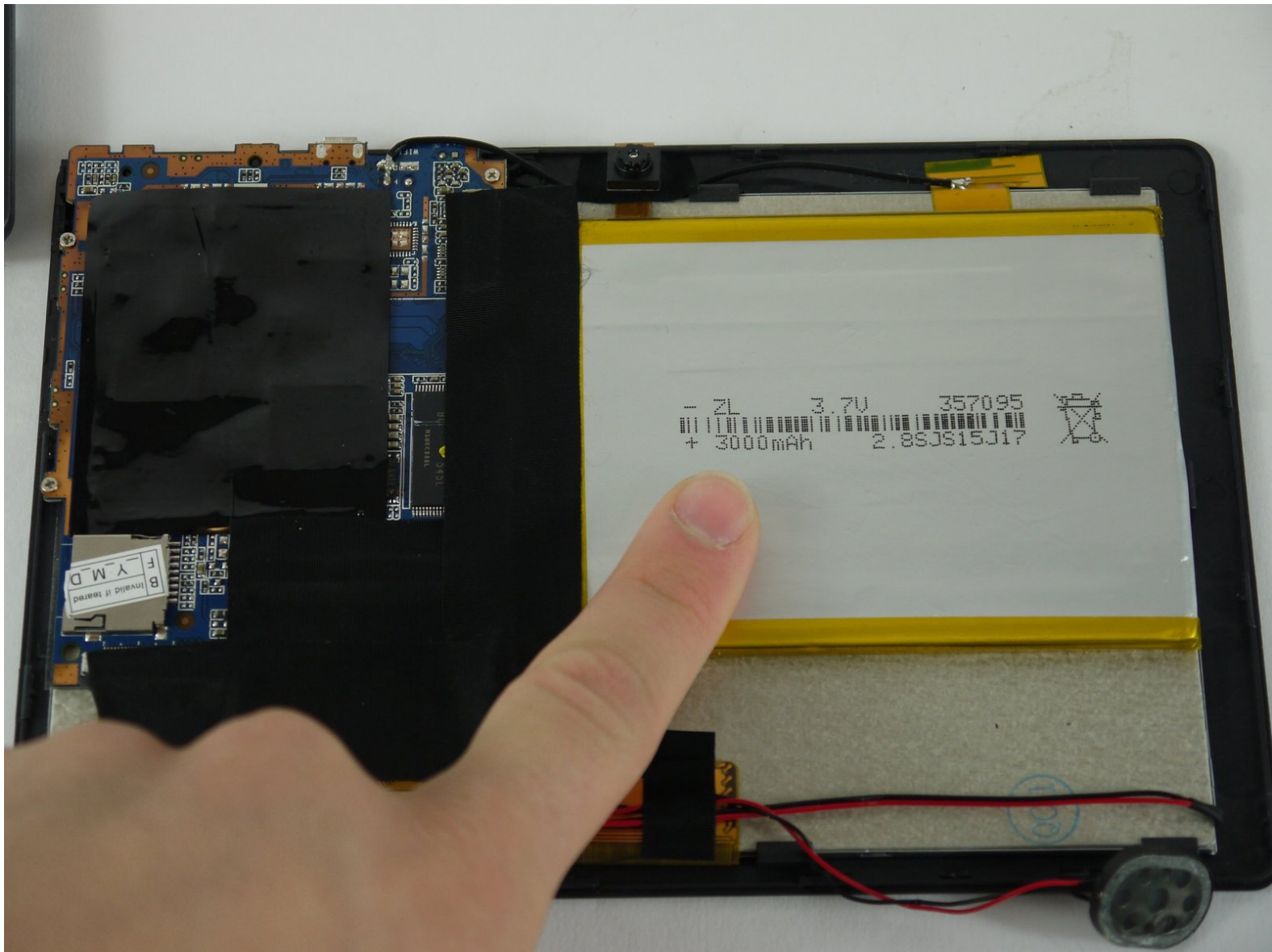




# Alldaymall A88X Battery Replacement

Restore the power to your tablet by replacing a dead, dying or defective battery.

Written By: Alex



---

## INTRODUCTION

The Alldaymall A88X has a 3000mAh battery that is glued to the back of the LCD screen and soldered to the motherboard. This guide will walk you through the process of removing the existing battery and installing a new one.



### TOOLS:

- [iFixit Opening Tools](#) (1)
  - [Soldering Iron](#) (1)
  - [Tweezers](#) (1)
  - [Spudger](#) (1)
-

## Step 1 — Alldaymall A88X Back Cover



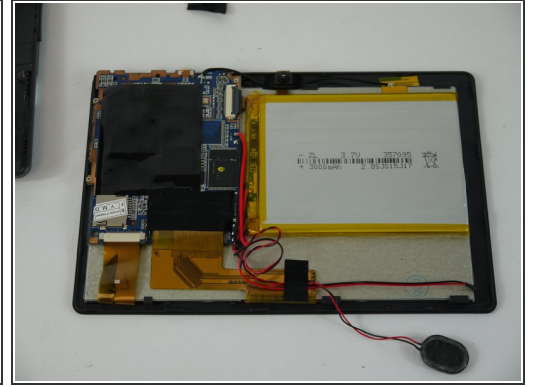
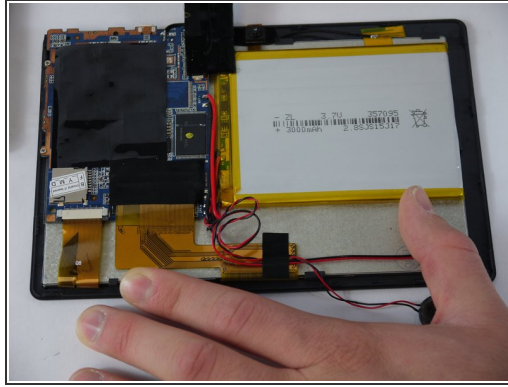
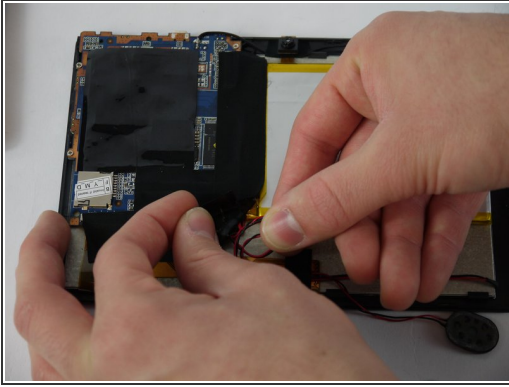
- Using a plastic opening tool, carefully pry the device apart. Make your way around the entire perimeter of the device and carefully place the two panels next to each other.
- ⚠ After the panels are separated, watch out for the speaker on the rear panel as it's wire is rather short.
- ⓘ When separating the panels keep an eye out for the power button and volume rocker as they can be dislodged.

## Step 2



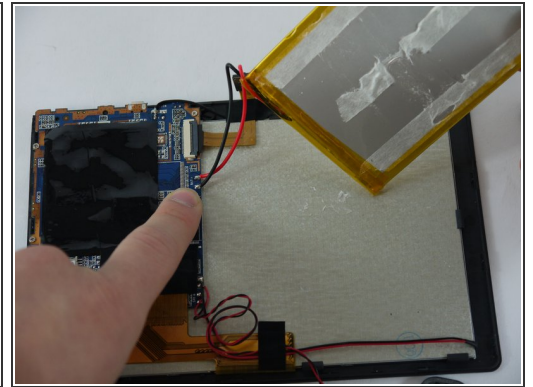
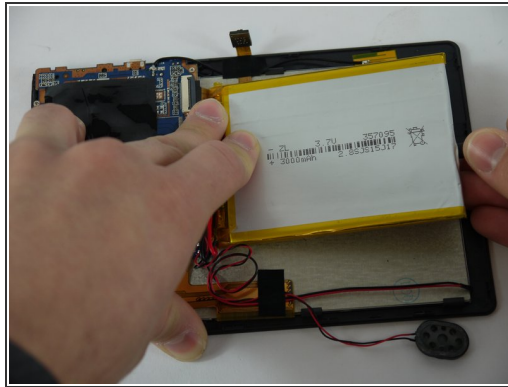
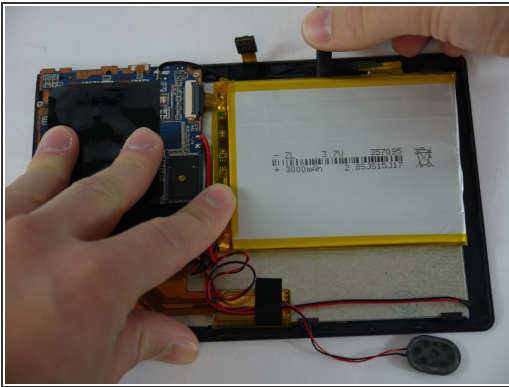
- Grip the speaker from the sides with your fingers or a pair of tweezers and slowly begin to remove it from the rear panel.
- ⚠ When removing the speaker, make sure not to disconnect the wires in any way.
- After the speaker has been removed, place the rear panel aside.

## Step 3 — Battery



- Carefully separate the speaker wire from the tape and proceed to peel the tape off in an upwards direction.
- ⓘ The tape we are removing covers a number of connections on the motherboard. Be extra careful not to sever any of these.

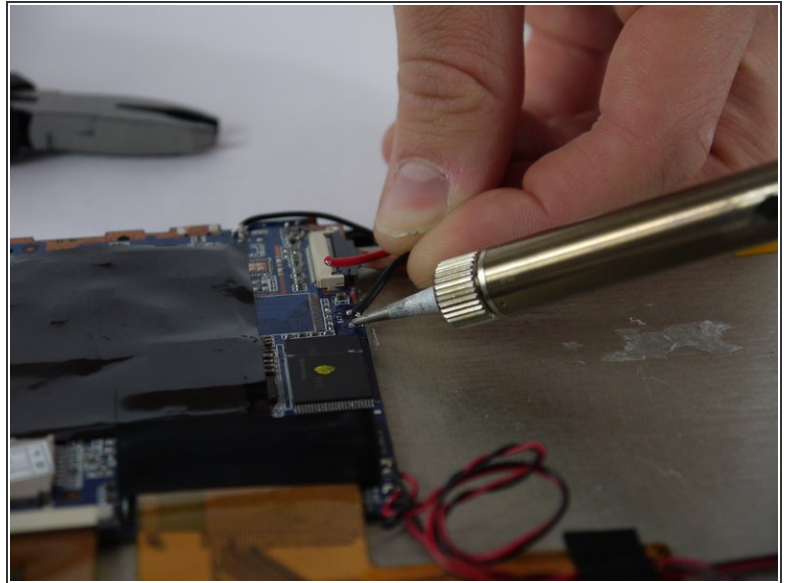
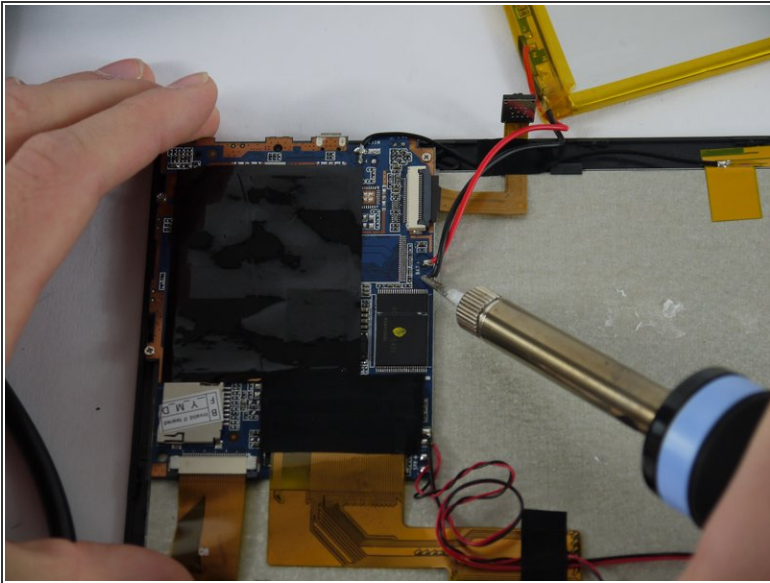
## Step 4



- Using a nylon spudger, slowly work your way underneath the battery separating it from the panel beneath.
- After the battery is separated from the panel make sure to place it face down above the tablet itself.
- ⚠ Throughout the removal process keep an eye on the battery's wires and make sure they do not break.



## Step 5



- [Desolder](#) the wires that connect the battery to the motherboard.

To reassemble your device, follow these instructions in reverse order.