



AlphaSmart Pro Rear Panel Replacement

This guide will allow you to replace the plastic rear panel of your AlphaSmart Pro device.

Written By: Ulysses Ramirez



INTRODUCTION

The rear panel may need to be replaced if it is cracked or damaged.

TOOLS:

- [Phillips #00 Screwdriver](#) (1)
 - [Spudger](#) (1)
-

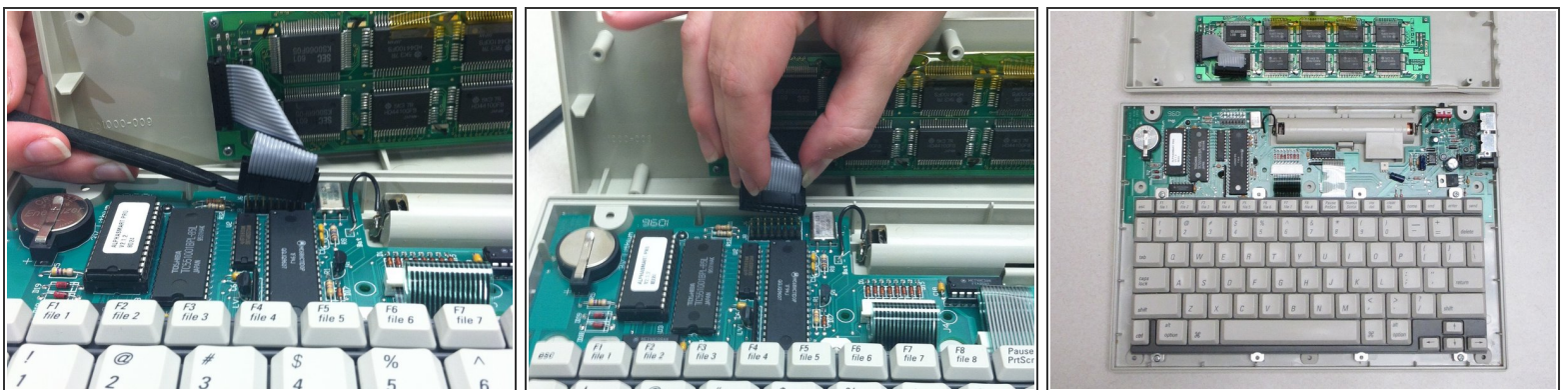
Step 1 — Separating Panels



⚠ Power off your AlphaSmart Pro device and remove the batteries before beginning disassembly.

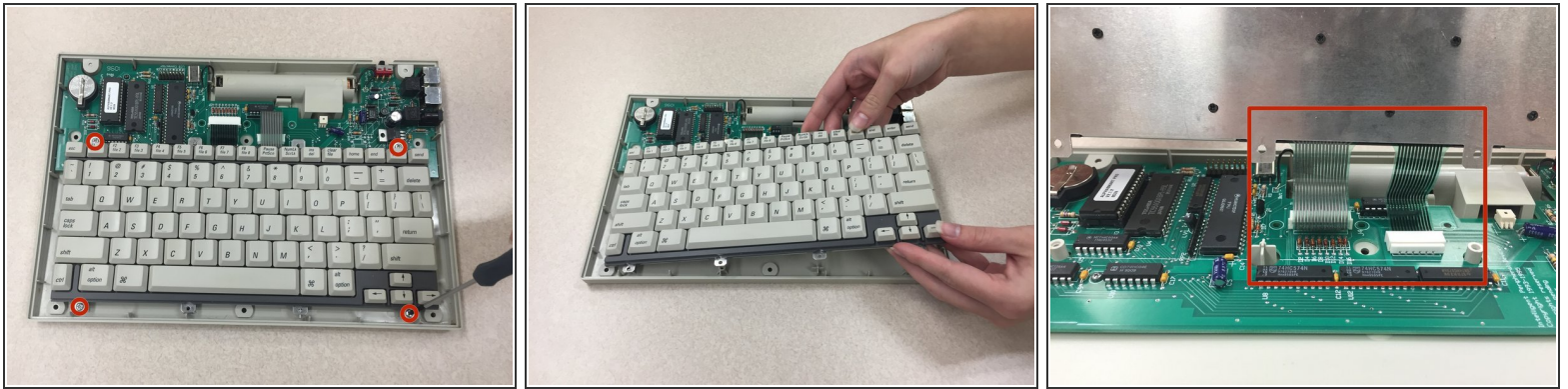
- Remove all eight 1 cm Phillips head screws from the back panel of the AlphaSmart Pro with the Phillips #00 Screwdriver.
- Carefully separate the front panel from the back panel.
- i** Notice that the front and back panels are still connected by a ribbon cable.

Step 2 — Detaching Ribbon Cable



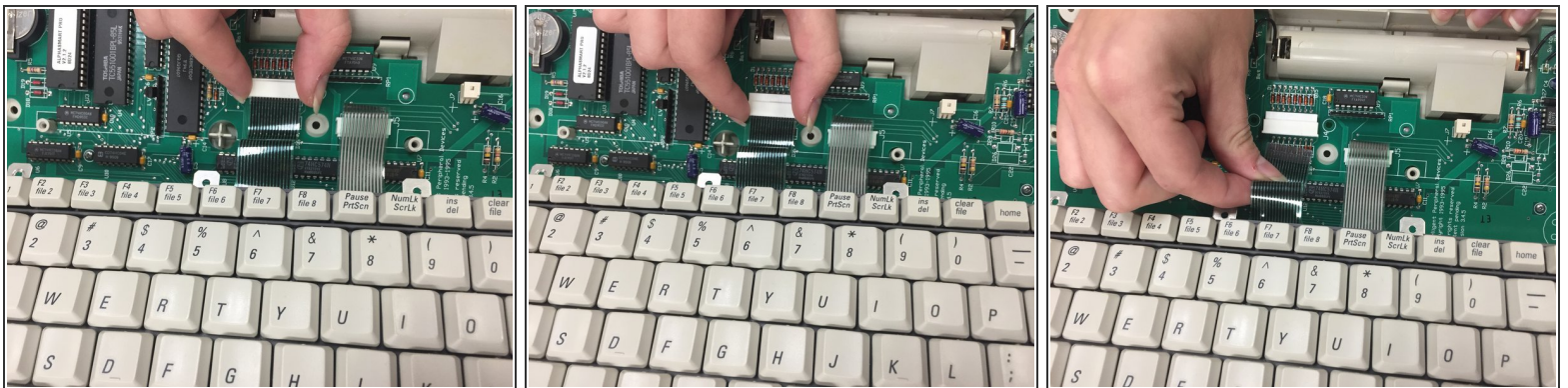
- To remove the ribbon cable, use the spudger to lift each side of the connector from the socket.
- Gently pull up on the connector to completely remove the connector from the socket.
- Remove front panel from the motherboard.

Step 3 — Prepping Keyboard For Removal



- Use the Phillips #00 Screwdriver to remove the four 1 cm screws from each corner of the keyboard.
- Gently lift the keyboard from the rear panel.
- ⓘ Notice that the keyboard is still connected to the motherboard by two ribbon cables.

Step 4 — Detaching keyboard Ribbon Cables



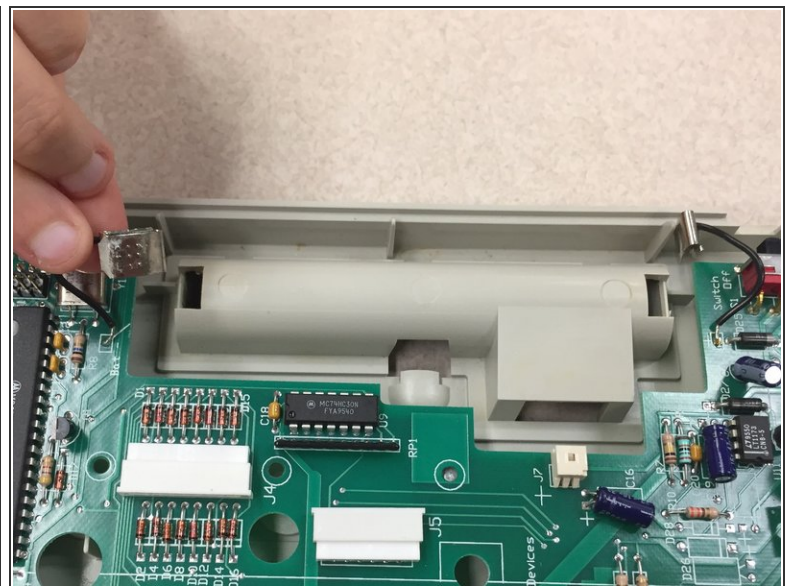
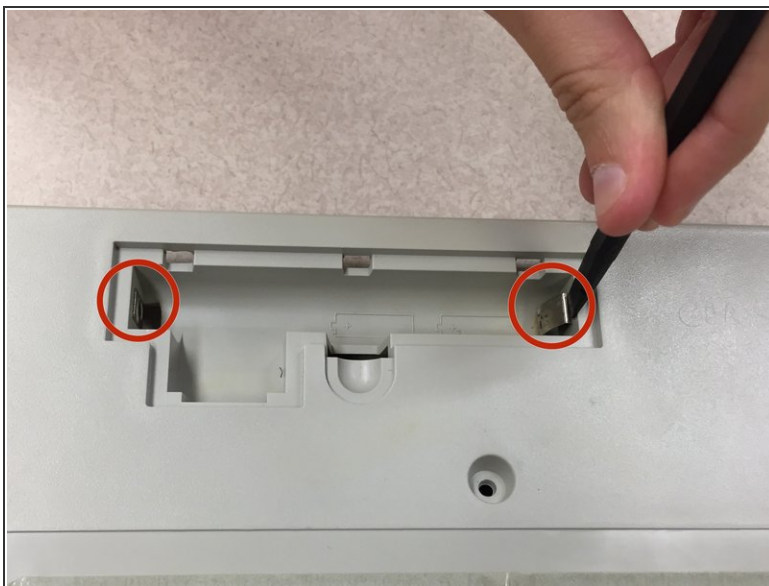
- To remove the ribbon cable, gently pull the connector in the direction of the ribbon cable.
- Pull the ribbon cable to remove it from the connector.
- Repeat the exact steps above for the other ribbon cable.
- ⓘ While the large connector on the left must be pulled toward you in order to remove the ribbon cable, the smaller connector on the right must be pushed away from you.

Step 5



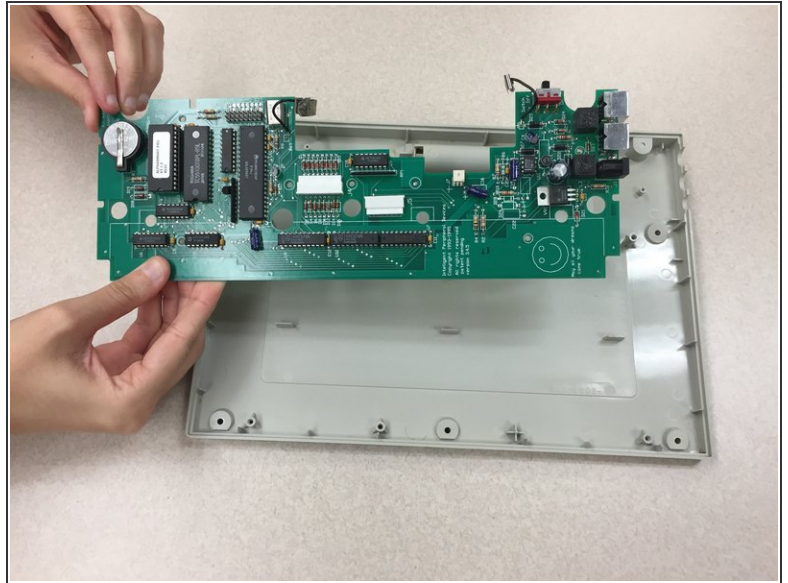
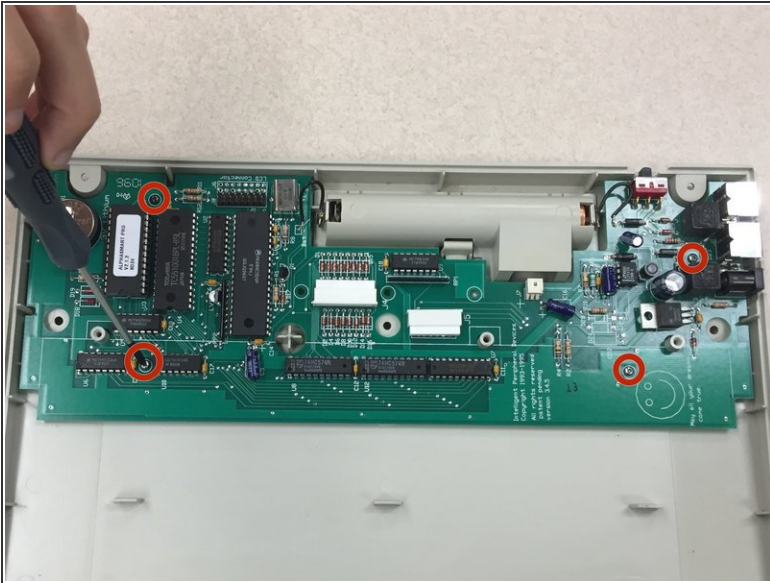
- Remove keyboard from motherboard.

Step 6 — Disconnecting Battery Prongs From Battery Compartment



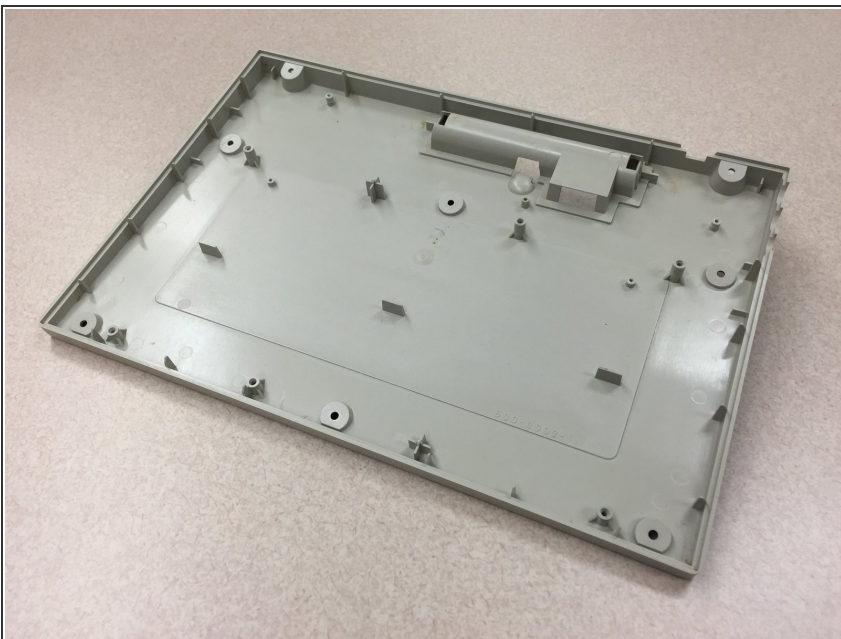
- ⓘ Flip the AlphaSmart Pro over so that the rear panel is facing upward.
- Using a spludger, carefully disconnect the battery prongs, located in the battery compartment.

Step 7 — Separating Motherboard From Rear Panel.



- Using a Phillips #00 Screwdriver, remove the four 0.8 cm screws from the motherboard.
- Carefully lift the motherboard away from the rear panel.

Step 8 — Removal Of Rear Panel



- Rear panel is separated from motherboard.

To reassemble your device, follow these instructions in reverse order.